



LYRIC THEATRE OF OKLAHOMA

The Official State Theatre of Oklahoma



JUNE 16-21

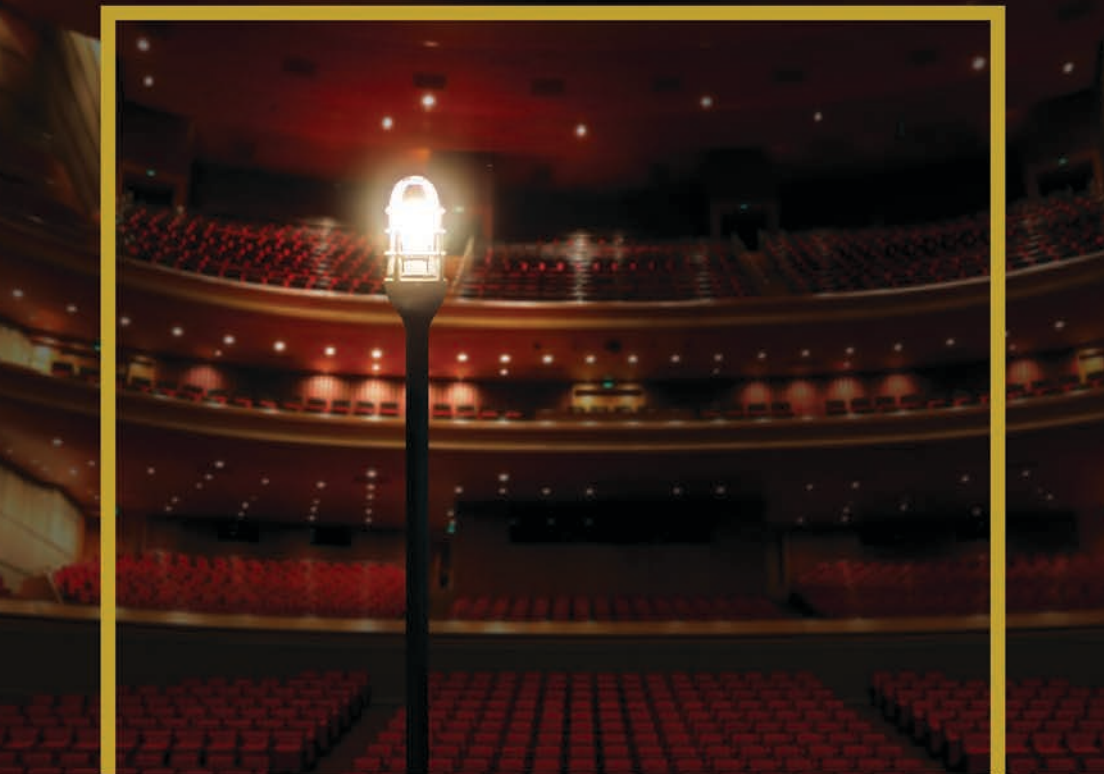


JULY 7-12



JULY 28 - AUGUST 2

2026 Summer at the Civic Center



INSURICA[®]



Innovating Performance

To describe INSURICA as "award winning" would be a dramatic understatement. INSURICA has been recognized with more national awards than ever before, and we believe it is because our industry is recognizing INSURICA's leadership and the way we are modernizing insurance. At INSURICA, we pride ourselves on **INNOVATION**. We have committed to transform our industry by using data as a weapon, and to serve our customers today and tomorrow with services and expertise. INSURICA is a Best In Class broker of insurance, and we strive every day to help our customers become Best In Class in their respective industries.



We Specialize in You | [INSURICA.com](https://www.insurica.com)



LYRIC THEATRE OF OKLAHOMA

TO HELP YOU (AND THE PEOPLE AROUND YOU) HAVE THE BEST TIME, WE PLEASE ASK THAT YOU:

- Always cooperate with the ushers and front-of-house staff. They are there to help you, keep an orderly environment, and ensure the show begins as scheduled.
- Turn off your cell phones. All the way off ...
- Unwrap all candies now and refrain from loud eating during the performance.
- Treat all theatre staff you see with respect and kindness. They want you to have a great time, and they deserve respect and a positive work environment.
- Be engaged in the show! But also be respectful of the people around you and do not make any overly disruptive comments.
- Do not sing along with the actors. It distracts your fellow theatregoers and is not thoughtful.
- Do not engage with the actors or musicians working in the show. Only engage if they encourage you to, and please do not distract them at any time during the performance.
- Be patient with the restroom lines. We know they're long, but do not become pushy or rude. Everyone will get their turn.
- Please be advised that these productions may contain: Strobe Lighting Effects, and Theatrical Fog/Haze.
- Relax, sit back, and enjoy the show! Once again, we would not be here without you.

THE VIDEOTAPING OR MAKING OF ELECTRONIC OR OTHER AUDIO AND/OR VISUAL RECORDINGS OF THIS PRODUCTION AND DISTRIBUTING RECORDINGS OR STREAMS IN ANY MEDIUM, INCLUDING THE INTERNET, IS STRICTLY PROHIBITED, A VIOLATION OF THE AUTHOR'S RIGHTS AND ACTIONABLE UNDER UNITED STATES COPYRIGHT LAW.

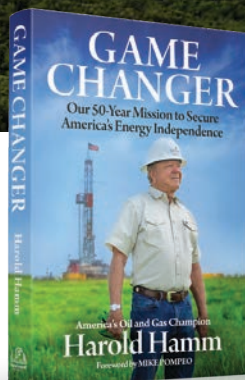
DONATE TO LYRIC THEATRE TODAY!

Lyric has delighted audiences with the best of American theatre since 1963, but it is our many supporters and sponsors who deserve a standing ovation. Your support makes the magic happen!



Inspiring the Next Generation of Game Changers

THE FUTURE of our country and our world depends on game changing thinkers – technologists, engineers, geologists – who are determined to discover what’s next, with the understanding that hydrocarbons will be essential and irreplaceable for decades to come. Continental Resources will lead the way by producing clean, reliable, affordable, abundant American energy. *We are America’s Energy Champion.*



Continental Resources is proud to support Lyric Theatre and their mission to enrich the quality of life for the people of Oklahoma.



America's
Energy
Champion

Director's Welcome

Dear Friends,

Welcome to Lyric Theatre of Oklahoma–The Official State Theatre, as we celebrate our 63rd Season! We are proud to share with you three brand new musical productions, including two American classics and one Lyric premiere. As the state's leading nonprofit theatre company, we are proud to rehearse, build, and create each Lyric production right here in Oklahoma. Thank you for your support, whether by buying a ticket, subscribing, or making a generous donation. Your support allows us to employ hundreds of artists and technicians over the years, making Lyric one of America's most treasured theatrical institutions.



Our first show has historic roots in the very building you are in–the grand and glorious Civic Center Music Hall. The musical *Annie* takes place during the Great Depression. The country was in financial turmoil, and a “new deal” was needed to get Americans back to work and improve our cities. The Civic Center Music Hall was built as a Works Progress Administration initiative under the leadership of President F.D.R., whom Annie and Warbucks visit in Act Two! As we celebrate America's 250th Anniversary, we're proud to invite some of Oklahoma's past and present political leaders onstage to share their experiences in serving our country. In addition, they'll be special walk-on guests in Act Two at the White House with F.D.R. I want to thank each of them for supporting Lyric and the arts by being part of this extra-special production of *Annie*.

Then, second on stage is one of the most fun movie-to-stage adaptations in years. *Sister Act* brings all the humor and heart of the iconic film, featuring brand-new songs by legendary Broadway composer Alan Menken. We are thrilled to welcome back to Lyric Theatre, University of Oklahoma graduate, Ms. Kristina Love. She has become an International superstar on musical stages around the world in the iconic role of Deloris Van Cartier, originally made famous by Academy Award winner Whoopi Goldberg. Not only did Kristina play the lead in *Sister Act* in Germany, but she also originated the role of Tina Turner in the world premiere of *Tina - The Tina Turner Musical*, both in Germany and in London's West End. Headed by director Ashley Wells, choreographer Hui Cha Poos, and music director Michael D. Childs, this fantastic company of Lyric favorites AND a few extra VIP nuns promises to make this *Sister Act* one to remember!

Finally, we have created a production of Stephen Sondheim's masterpiece, *Sweeney Todd: The Demon Barber of Fleet Street*, as only Lyric can, in epic proportions. Those of you who have been coming to Lyric know that I like to bring some of America's greatest and grandest musicals to the stage in a way that honors their glorious music. From the 50+ member casts of *Les Misérables* (2014) and *Titanic* (2019) comes a *Sweeney Todd* that could be seen at opera houses around the world. Featuring a cast of 52, including members of Oklahoma City's premiere symphony chorus, Canterbury Voices, this ultimate tale of love, revenge, and tragedy will keep you on the edge of your seat as it unfolds before your eyes like never before. The design dream team includes Jeffrey Meek (costumes), Kimberly Powers (scenic), Helena Kuuka (lighting), Courtney Strong (props), Jo Weaver (wigs), and Jacob Henry (sound), creating theatrical magic from start to finish.

There are hundreds of people on and off stage at Lyric Theatre are making this summer season a reality. Thank YOU for supporting your Official State Theatre of Oklahoma. Be sure to join us for our upcoming productions this fall of *Come From Away* and Lyric's *A Christmas Carol* at the intimate Plaza Theatre and check out our upcoming 2027 season!

And now, the tradition continues as we dim the lights, cue the orchestra, and invite you to experience the magic of grand musical theatre as only Lyric Theatre can bring you!

See you in the lobby,

A handwritten signature in black ink that reads "Michael Baron". The signature is fluid and cursive, with a long, sweeping underline that extends across the width of the name.

Michael Baron
Producing Artistic Director



WE PRODUCE ENERGY THAT FUELS MODERN LIFE.

Devon Energy is a proud partner
of Lyric Theatre and the Oklahoma
performing arts community.

[devonenergy.com](https://www.devonenergy.com)





LYRIC THEATRE OF OKLAHOMA

MICHAEL BARON, PRODUCING ARTISTIC DIRECTOR

JIM REYNOLDS, MANAGING DIRECTOR

ASHLEY WELLS, EXECUTIVE PRODUCER

PRESENT

ANNIE

Book by
THOMAS MEEHAN

Lyrics by
MARTIN CHARNIN

Music by
CHARLES STROUSE

Original Broadway Production Directed by **MARTIN CHARNIN**

Original Broadway Production Directed by MARTIN CHARNIN

Based on "Little Orphan Annie" by Permission of Tribune Content Agency, LLC.

Originally Produced at The Goodspeed Opera House. Michael P. Price, Executive Producer.

Presented on Broadway by MIKE NICHOLS

Produced by IRWIN MEYER, STEPHEN R. FRIEDMAN, LEWIS ALLEN, ALVIN NEDERLANDER ASSOCIATES INC.,
THE JOHN F. KENNEDY CENTER FOR THE PERFORMING ARTS, ICARUS PRODUCTIONS.

Scenic Designer SHAWN IRISH[^]
 Costume Designer JEFFREY MEEK
 Lighting Designer HELENA KUUKKA
 Sound Designer JACOB HENRY
 Properties Designer COURTNEY STRONG
 Hair/Wig Designer J M WEAVER
 Fight Director/Intimacy Coordinator KRIS KUSS
 Stage Manager JEFFERY SCOTT COCHRAN*

MUSIC DIRECTOR **JAKE JOHNSON**
 CHOREOGRAPHER **MATTHEW SIPRESS**
 DIRECTED BY **MICHAEL BARON**⁺

LYRIC'S "FAMILY FAVORITE MUSICAL" SPONSOR



TITLE SPONSORS



ACKNOWLEDGEMENTS

ANNIE, is presented through special arrangement with Music Theatre International (MTI).

All authorized performance materials are also supplied by MTI. www.mtishows.com

Lyric Theatre of Oklahoma operates under agreements with Actors' Equity Association, the union of professional actors and stage managers in the United States, and The Stage Directors and Choreographers Society. Lyric Theatre is a member of the National Alliance for Musical Theatre (NAMT). Lyric Theatre programs are sponsored, in part, by The National Endowment for the Arts, Allied Arts, and the Arts Council of Oklahoma.

*Member of Actors' Equity Association (AEA) • [^]Member of United Scenic Artists (USA)

+ Member Stage Directors and Choreographers Society (SDC) • #Local 802 - American Federation of Musicians (AFM)



We are honored to support **Lyric Theatre**

Express Employment Professionals has been finding job seekers work since 1983 across North America, South Africa, Australia and New Zealand. Express strives to provide hope through employment and it starts with our International Headquarters based right here in Oklahoma City.

***Express knows jobs,
get to know Express!***



To find a location near you, visit
ExpressPros.com/Locations

ANNIE Song List

ACT I

<i>Maybe</i>	Annie
<i>It's the Hard-Knock Life</i>	Molly, Pepper, Duffy, July, Annie, Tessie, Kate
<i>It's the Hard-Knock Life (Reprise)</i>	Molly, Pepper, Duffy, July, Tessie, Kate
<i>Tomorrow</i>	Annie
<i>We'd Like to Thank You, Herbert Hoover</i>	Sophie, the Kettle, Ensemble
<i>Little Girls</i>	Miss Aggie Hannigan
<i>Little Girls (Reprise)</i>	Miss Aggie Hannigan
<i>I Think I'm Gonna Like It Here</i>	Annie, Grace Farrell, Drake, Mrs. Pugh, Cecile, Annette, Ensemble
<i>NYC</i>	A Star To Be, Annie, Grace Farrell, Oliver Warbucks, Ensemble
<i>Easy Street</i>	Miss Aggie Hannigan, Rooster Hannigan, Lily St. Regis
<i>You Won't Be an Orphan For Long</i>	Grace Farrell, Drake, Mrs. Pugh, Cecile, Annette, Oliver Warbucks, Ensemble

– 15-Minute Intermission –

ACT II

<i>You're Never Fully Dressed Without a Smile</i>	Bert Healy, Boylan Sisters, Ensemble
<i>You're Never Fully Dressed Without a Smile (Reprise)</i>	Molly, Pepper, Duffy, July, Annie, Tessie, Kate
<i>Easy Street (Reprise)</i>	Miss Aggie Hannigan, Rooster Hannigan, Lily St. Regis
<i>Tomorrow (Cabinet Reprise)</i>	Annie, Oliver Warbucks, Franklin D. Roosevelt, Ensemble
<i>Something Was Missing</i>	Oliver Warbucks
<i>I Don't Need Anything But You</i>	Annie, Grace Farrell, Oliver Warbucks, Ensemble
<i>Maybe (Reprise)</i>	Annie
<i>A New Deal For Christmas</i>	Annie, Grace Farrell, Oliver Warbucks, Franklin D. Roosevelt, Ensemble

ORCHESTRA

Keyboard	Lily Noelle Blanchard
Bass	Larry Moore
Drums	Roger Owens
Guitar/Banjo	Brian Belanus
Percussion	Patrick Womack
Reed 1	Martin King
Reed 2	Davon Carrington
Reed 3	Jim Meiller
Trombone 1	John Allen
Trumpet 1	Kirk Palmer
Contractor/Violin	Densi Rushing

ANNIE Cast



LONDON BROOKE HINKLEY
Annie (Oh My Goodness Cast)



KENZIE BECKHAM
Annie (Leapin' Lizards Cast)



THOMAS E. CUNNINGHAM*
Oliver Warbucks



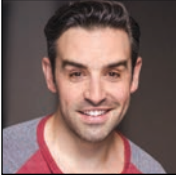
CLARA BRORSEN
Sandy



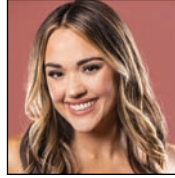
KARA SIMPSON
Grace Farrell



BARBARA SCHOENHOFER
Miss Aggie Hannigan



J. ROBERT MOORE*
Rooster Hannigan



SIERRA SIKES
Lily St. Regis



JASON BIAS
Bert Healy



DAVID DOBSON
Franklin D. Roosevelt



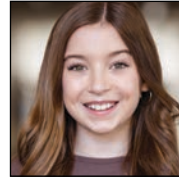
MARY BROZINA WIERICK
Mrs. Pugh



JESSICA TATE
Mrs. Greer



RODNEY BRAZIL
Drake



EMMERSON FROST
Molly (Oh My Goodness Cast)



CALLIE FLATT
Molly (Leapin' Lizards Cast)



JILLIAN RINDLER
Pepper (Oh My Goodness Cast)



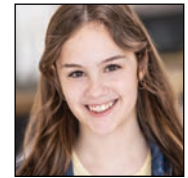
SHAWNTEL BLACK
Pepper (Leapin' Lizards Cast)



BETSY BERGHOLD
Kate (Oh My Goodness Cast)



EMERY LANE
Kate (Leapin' Lizards Cast)



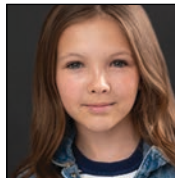
ELISABETH CASTOR
Duffy (Oh My Goodness Cast)



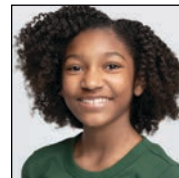
JENIEVE AQUINO
Duffy (Leapin' Lizards Cast)



AVERY FUNKE
Tessie (Oh My Goodness Cast)



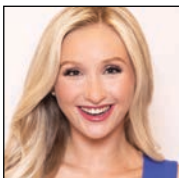
GREER CAUDLE
Tessie (Leapin' Lizards Cast)



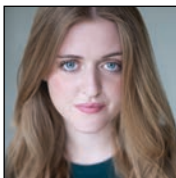
NAYA WILLIAMS
July (Oh My Goodness Cast)



AVA RICHARDSON
July (Leapin' Lizards Cast)



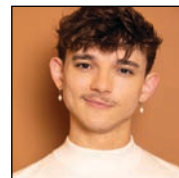
SOPHIA DAVIES
Ensemble/Dance Captain



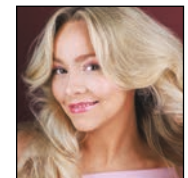
EMILY SULLIVAN
Ensemble/Star To Be



MEGUMI ISHIBASHI
Ensemble/Grace Cover



JOEL STEPHENS
Ensemble/Rooster Cover



OLIVIA WARNER
Ensemble/Lily Cover

ANNIE Cast



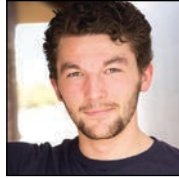
CHARLIE MONNOT
Ensemble/Bert cover



ZACHARY WRIGHT
Ensemble/Drake Cover



ISAIAH WILLIAMS
Ensemble



DAKOTA MUCKELRATH
Ensemble



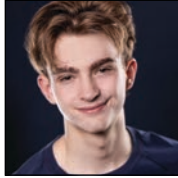
CHLOE DAVIS
Apprentice/Star To Be Cover



KAYDEN GROVENBERG
Apprentice



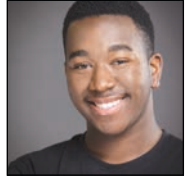
ILO BONNER
Apprentice



KRAYSON REED
Apprentice



LUANDA DE HILSTER
Ensemble/Swing/
Pugh & Greer Cover



MYLES STURNS-THOMAS
Ensemble/Swing

THE ARTISTIC IMPACT OF JEFFREY MEEK

Own A Piece of Lyric History

This **online auction** features **original renderings** from Lyric Theatre of Oklahoma's Resident Costume Designer, Jeffrey Meek.



**SCAN
HERE
TO BID
ONLINE**

 **LYRIC THEATRE OF OKLAHOMA**

All proceeds benefit Lyric Theatre of Oklahoma,
a registered 501(c)3 nonprofit arts organization





BRAUM'S®

\$1 OFF

ANY

DOUBLE

DIP

SUNDAE



\$1 OFF ANY DOUBLE DIP SUNDAE

Offer expires 12/31/2026 | KEY CODE: 92341

Choose any Braum's Double Dip Sundae & receive \$1.00 off with this coupon. Limit one coupon per transaction. Cannot be combined with any other offer or promotion. Prices may vary by store location.



This coupon was redeemed on _____ at _____

DATE

STORE LOCATION

LYRIC THEATRE OF OKLAHOMA

MICHAEL BARON, PRODUCING ARTISTIC DIRECTOR

JIM REYNOLDS, MANAGING DIRECTOR

ASHLEY WELLS, EXECUTIVE PRODUCER

PRESENT

SISTER ACT

Starring KRISTINA LOVE*

Music by
ALAN MENKEN

Lyrics by
GLENN SLATER

Book by
**CHERI STEINKELLNER
& BILL STEINKELLNER**

Additional Book Material by **DOUGLAS CARTER BEANE**

Orchestrations by Doug Besterman

Vocal and Incidental Music Arrangements by Michael Kosarin

Dance Music Arrangements by Mark Hummel

Produced on Broadway by Whoopi Goldberg & Stage Entertainment in association with

The Shubert Organization and Disney Theatrical Productions

Original Production Developed in Association with Peter Schneider & Michael Reno

and Produced by Stage Entertainment

Pasadena Playhouse, Pasadena, CA • Alliance Theatre, Atlanta, GA • Sheldon Epps, Artistic Director

Susan V. Booth, Artistic Director • Lyla White, Executive Director

Tom Pechar, Managing Director • Tom Ware, Producing Director

Scenic Designer **ADAM KOCH[^]**
Costume Designers..... **VINCENT SCASELLATI & KENNETH BURRELL**
Lighting Designer **HELENA KUUKKA**
Sound Designer **JACOB HENRY**
Properties Designer **COURTNEY STRONG**
Hair/Wig Designer **J M WEAVER**
Fight Director/Intimacy Coordinator **KRIS KUSS**
Stage Manager **SHANNON RICHEY***

MUSIC DIRECTOR **MICHAEL D. CHILDS**

CHORAL DIRECTOR **JORDAN M. ANDREWS**

CHOREOGRAPHER **HUI CHA POOS**

DIRECTED BY **ASHLEY WELLS⁺**

MARQUEE SPONSOR:



SIGNATURE SPONSORS:

Paula & Carl Stover

SUPPORTING SPONSORS:

Kevin & Monica Wittrock

ACKNOWLEDGEMENTS

SISTER ACT, is presented through special arrangement with Music Theatre International (MTI).

All authorized performance materials are also supplied by MTI. www.mtishows.com

Costumes Provided By: The Kansas City Costume Company.

Lyric Theatre of Oklahoma operates under agreements with Actors' Equity Association, the union of professional actors and stage managers in the United States, and The Stage Directors and Choreographers Society. Lyric Theatre is a member of the National Alliance for Musical Theatre (NAMT). Lyric Theatre programs are sponsored, in part, by The National Endowment for the Arts, Allied Arts, and the Arts Council of Oklahoma.

*Member of Actors' Equity Association (AEA) • [^]Member of United Scenic Artists (USA)

+ Member Stage Directors and Choreographers Society (SDC) • #Local 802 - American Federation of Musicians (AFM)





Allied Arts is proud to support Lyric Theatre and its Broadway-quality productions that enrich our local community, along with its statewide touring program that brings live theatre to students across Oklahoma. Together, we help ensure the arts remain accessible, inspiring and impactful - on stage and in classrooms statewide!



With **you** art can.

(405) 278-8944 | AlliedArtsOKC.com |
@alliedartsokc

SISTER ACT Song List

ACT I

<i>Take Me To Heaven</i>	Deloris, Michelle, Tina
<i>Fabulous Baby!</i>	Deloris, Michelle, Tina
<i>The Perfect Place</i>	Nuns
<i>Here Within These Walls</i>	Mother Superior, Deloris, Nuns
<i>It's Good to Be a Nun</i>	Nuns, Deloris
<i>When I Find My Baby</i>	Curtis, Joey, TJ, Pablo
<i>I Could Be That Guy</i>	Eddie, Ensemble
<i>Here Within These Walls (Reprise)</i>	Mother Superior, Nuns
<i>Raise Your Voice</i>	Deloris, Nuns
<i>Take Me To Heaven</i>	Deloris, Nuns

– 15-Minute Intermission –

ACT II

<i>Sunday Morning Fever</i>	Deloris, Monsignor, Nuns, Eddie, Mother Superior
<i>Lady in the Long Black Dress</i>	Joey, TJ, Pablo
<i>I Haven't Got a Prayer</i>	Mother Superior
<i>Bless Our Show</i>	Deloris, Nuns
<i>The Life I Never Lead</i>	Mary Robert
<i>Fabulous, Baby! (Reprise)</i>	Eddie, Deloris, Nuns, Ensemble
<i>Sister Act</i>	Deloris
<i>When I Find My Baby (Reprise)</i>	Curtis
<i>The Life I Never Lead (Reprise)</i>	Mary Robert
<i>Sister Act (Reprise)</i>	Deloris, Mother Superior
<i>Spread the Love Around</i>	Company
<i>Raise Your Voice</i>	Company

ORCHESTRA

<i>Pit Pianist</i>	Jake Johnson
<i>Bass</i>	Larry Moore
<i>Drums</i>	Roger Owens
<i>Percussion</i>	Patrick Womack
<i>Guitar 1</i>	Brian Belamus
<i>Guitar 2</i>	Jeff Kirbas
<i>Reed 1</i>	Martin King
<i>Reed 2</i>	Jenny Rucker
<i>Trombone</i>	Jeff Kidwell
<i>Trumpet</i>	Kirk Palmer
<i>Contractor</i>	Densi Rushing

NUN CHOIR

Choral Director: JORDAN M. ANDREWS

SOPRANO

Rachel Ellis
 Carla Hale
 Amber Hillhouse
 Courtney Lavender
 Kayla Russell
 Gabrielle Searcy

ALTO

Katherine Amyx
 Jenel Cavazos
 Adrienne DeKlotz
 Daniela Ortiz
 Jessica Foxen
 Rebekah Morales
 Maggie Sapp
 Monica Wittrock

BASS

Emily Garman
 Elizabeth Garrison
 Katie Rose Gorton
 Heather Morales
 Elaine Regier
 Becca Wallingford




OKLAHOMA Arts

Leading, cultivating, and amplifying the transformative power of the arts for all Oklahomans and their communities.

Go to arts.ok.gov to learn how our grants and programs cultivate and support the arts in communities and schools across Oklahoma.

The Oklahoma Arts Council is an agency of state government.



 arts.ok.gov

SISTER ACT Cast



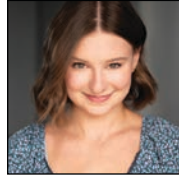
KRISTINA LOVE*
Deloris Van Cartier



JESSICA TATE
Mother Superior



CORY KING
Sister Mary Lazarus



ELLEN PIERCE
Sister Mary Robert



RENEE ANDERSON
Sister Mary Patrick



BRANDON BURTON
Eddie Souther



SINCLAIR FREEMAN*
Curtis Jackson



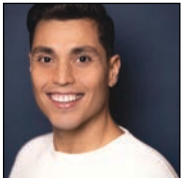
JASON BIAS
Monsignor O'Hara



KARA STAIGER
Sister Mary Theresa



BARBARA FOX DEMAIO
Sister Mary Martin of Tours



LUIS ROJAS
Pablo



ZACHARY WRIGHT
Joey



DARION ELIE
TJ



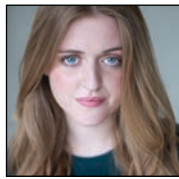
SELENA SIMMONS
Ensemble/Tina/Cover Deloris



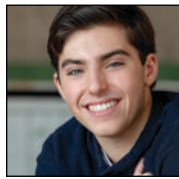
TALYN NOLAN
*Ensemble/Michelle/
US Mary Patrick*



JOEL STEPHENS
Ensemble/US Joey



EMILY SULLIVAN
Ensemble/Dance Captain



CHRISTOPHER BRUNO
Ensemble/Fight Captain



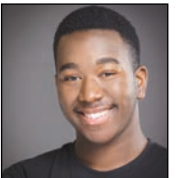
EDWIN LORNE
Ensemble/US Eddie



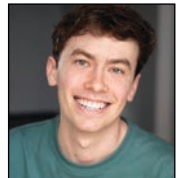
CINDY HANSKA
Ensemble/US Mary Theresa



JESSICA COLEMAN
Ensemble/US Mary Martin Tours



MYLES STURNS-THOMAS
Ensemble/US TJ & Curtis



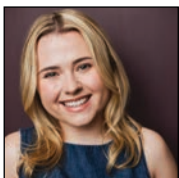
TRACE BURCHART
Ensemble



MEGUMI ISHIBASHI
Ensemble/US Tina & Michelle



AVA MUSGRAVES
Ensemble



ASHLEY WOYTAL
Swing/Mary Robert US



MANNY GALLEGOS
Swing



CALEB KEZEOR
Swing



Above & Beyond AV

Installed AV Technology | Integrated Systems
Onsite Technical Support | System Maintenance
In-House Partnerships | Live Event Production
Creative Services | Rental



cory's
SPACES • ONSITE • LIVE

www.corys.pro



LYRIC THEATRE OF OKLAHOMA

MICHAEL BARON, PRODUCING ARTISTIC DIRECTOR

JIM REYNOLDS, MANAGING DIRECTOR

ASHLEY WELLS, EXECUTIVE PRODUCER

PRESENTS

SWEENEY TODD: The Demon Barber of Fleet Street A Musical Thriller

Music and Lyrics by **STEPHEN SONDHEIM**

Book by **HUGH WHEELER**

From an Adaptation by **CHRISTOPHER BOND**

Originally Directed on Broadway by **HAROLD PRINCE**

Orchestrations by **JONATHAN TUNICK**

Originally Produced on Broadway by Richard Barr, Charles Woodward, Robert Fryer, Mary Lea Johnson,
Martin Richards in Association with Dean and Judy Manos.

Scenic Designer **KIMBERLY POWERS[^]**
Costume Designer **JEFFREY MEEK**
Lighting Designer **HELENA KUUKKA**
Sound Designer **JACOB HENRY**
Fight Director/Intimacy Coordinator **KRIS KUSS**
Properties Designer **COURTNEY STRONG**
Hair Designer **J M WEAVER**
Stage Manager **SHANNON RICHEY***

MUSIC DIRECTOR **JAN MCDANIEL**

CHORAL DIRECTOR **JAKE JOHNSON**

CHOREOGRAPHER **ASHLYN ADAMS**

DIRECTED BY **MICHAEL BARON⁺**

TITLE SPONSOR



ACKNOWLEDGEMENTS

SWEENEY TODD is presented through special arrangement with Music Theatre International (MTI). All authorized performance materials are also supplied by MTI. www.mtishows.com. Lyric Theatre of Oklahoma operates under agreements with Actors' Equity Association, the union of professional actors and stage managers in the United States, and The Stage Directors and Choreographers Society. Lyric Theatre is a member of the National Alliance for Musical Theatre (NAMT). Lyric Theatre's programs are sponsored, in part, by The National Endowment for the Arts, Allied Arts, and the Arts Council of Oklahoma.

^{*}Member of Actors' Equity Association (AEA) • [^]Member of United Scenic Artists (USA)

⁺ Member Stage Directors and Choreographers Society (SDC) • #Local 802 - American Federation of Musicians (AFM)





Your event deserves
a *memorable* moment.

★ REAL EVENTS. REAL PEOPLE. REAL FUN. ★



Premium open-air photo booth rental for weddings, galas, parties & every celebration in between.

WEDDINGS

CORPORATE EVENTS

GALAS

BIRTHDAYS

THEATRE EVENTS

CUSTOM BOOTH EXPERIENCE



Locally owned & operated

*Proudly local — owned by Lindse Barks,
theatre mom & proud Lyric Theatre supporter. ♥*

lindsebarkspictures.com/marquee-booth

Book your date today!



SWEENEY TODD Song List

ACT I

<i>The Ballad of Sweeney Todd</i>	Sweeney Todd, Ensemble
<i>No Place Like London</i>	Sweeney Todd, Anthony Hope
<i>Beggar Woman's Lament</i>	Beggar Woman
<i>Barber and His Wife</i>	Sweeney Todd
<i>Worst Pies in London</i>	Mrs Lovett
<i>Poor Thing (Barber and His Wife)</i>	Mrs Lovett
<i>My Friends</i>	Sweeney Todd, Mrs Lovett
<i>The Ballad of Sweeney Todd (Reprise)</i>	Ensemble
<i>Green Finch and Linnet Bird</i>	Johanna
<i>Ah, Miss</i>	Anthony Hope, Johanna
<i>Johanna</i>	Anthony Hope
<i>Beggar Woman's Lament (Reprise)</i>	Beggar Woman
<i>Pirelli's Miracle Elixir</i>	Mrs Lovett, Sweeney Todd, Tobias Ragg, Ensemble
<i>The Contest</i>	Adolfo Pirelli
<i>Wait</i>	Mrs Lovett
<i>Kiss Me</i>	Anthony Hope, Johanna
<i>Ladies and Their Sensitivities</i>	Beadle Bamford
<i>Pretty Women</i>	Sweeney Todd, Judge Turpin, Anthony Hope
<i>Epiphany</i>	Sweeney Todd
<i>A Little Priest</i>	Sweeney Todd, Mrs Lovett

– 15-Minute Intermission –

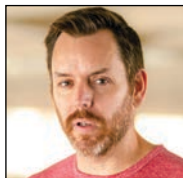
ACT II

<i>God, That's Good!</i>	Sweeney Todd, Mrs Lovett, Tobias Ragg, Ensemble
<i>Johanna (Quartet)</i>	Sweeney Todd, Beggar Woman, Anthony Hope, Johanna
<i>I Am a Lass</i>	Mrs Lovett
<i>By The Sea</i>	Mrs Lovett
<i>Wigmaker Sequence/The Ballad of Sweeney Todd (Reprise)/The Letter</i>	Sweeney Todd, Anthony Hope, Ensemble
<i>Not While I'm Around</i>	Mrs Lovett, Tobias Ragg
<i>Parlour Songs: Sweet Polly Plunkett/The 12 Bells In Tower of Bray/Sweet Polly Plunkett</i>	Beadle Bamford, Mrs Lovett, Tobias Ragg
<i>Parlour Songs (Reprise)</i>	Beadle Bamford, Mrs Lovett, Tobias Ragg
<i>Finale Sequence</i>	Sweeney Todd, Mrs Lovett, Beggar Woman, Judge Turpin, Anthony Hope, Johanna, Tobias Ragg
<i>The Ballad of Sweeney Todd: Attend The Tale of Sweeney Todd</i>	Ensemble

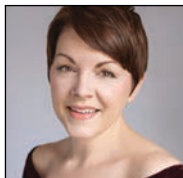
ORCHESTRA

Pianists	Michael Stafford & Jordan M Andrews
Bass	Larry Moore
Cello	Jim Shelley
Harp	Emily Duncan
Horn	Derrick Matthesen
Percussion	Roger Owens
Reed 1	Parthena Owens
Reed 2	Lisa Harvey Reed
Reed 3	Martin King
Trombone 1	Doug Hamish
Trombone 2	Joshua Gaub
Violin 1/ Contractor	Densi Rushing
Violin 2	Debbie McDonald

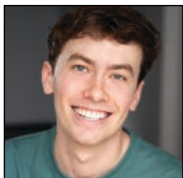
SWEENEY TODD Cast



SCOTT GUTHRIE*
Sweeney Todd



LINDSIE VANWINKLE-GUTHRIE
Mrs. Lovett



TRACE BURCHART
Tobias



DALLAS LISH
Anthony Hope



RACHAEL PARSONS
Johanna



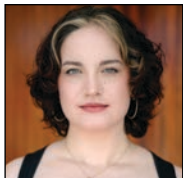
ERIC MCNAUGHTON
Judge Turpin



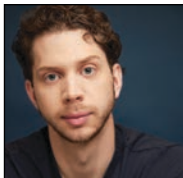
MICHAEL KOLLMORGEN
Beadle Bamford



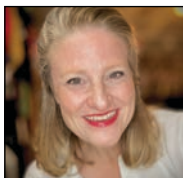
VISHAL VAIDYA*
Adolfo Pirelli



ALEXANDRIA BLUE
Beggar Woman



JARED BARBEE
Ensemble/Sweeney US



KARA STAIGER
Ensemble/Mrs. Lovett US



BRYAN FORTUNATO
Ensemble/Tobias US



EDWIN LORNE
Ensemble/Anthony US



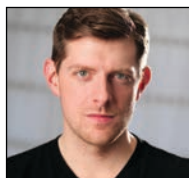
AVERY BENJAMIN
Ensemble/Johanna US



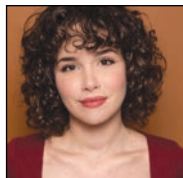
KEVIN ECKARD
Ensemble/Turpin US



MIKE MOWRY
Ensemble/Choir/Beadle US



SAM BRIGGS
*Ensemble/Dance Captain/
Pirelli US*



MICA MARTINEZ-HARKEY
Ensemble/Beggar Woman US



SAVANNAH GORDON
Ensemble



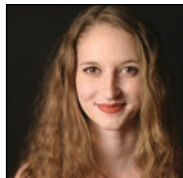
MEL KINCAID
Ensemble



COURTNEY LAVENDER
Ensemble



BLAKE LAWRENCE
Ensemble



SHELBY MOINETTE
Ensemble

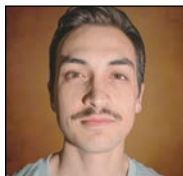


JANNA MONTGOMERY
Ensemble



KELLY MOORE
Ensemble

SWEENEY TODD Cast



CASEY SHAPIRO
Ensemble



MARINA QUINTANILLA
Ensemble



RYDER ADAMS
Apprentice



JESSIE BARTON
Apprentice



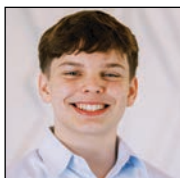
ILO BONNER
Apprentice



MACKENZIE CRAVENS
Apprentice



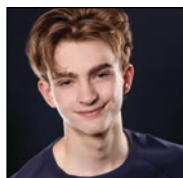
CALEB GRAVES
Apprentice



BRETT HOVER
Apprentice



JULIUS KAMAL MOORE JR
Apprentice



KRAYSON RAYCE REED
Apprentice



RYAN BRUCE CORLEY
Swing

SWEENEY TODD CHORUS

Choral Director: JAKE JOHNSON

Sydney Anderson
Colin Bannon
Blake Brockhaus
Jonathan Cajas
Denise Dougherty

Erinn Giraud
Maylou Gray
Eric Hamilton
Trinity Holland
Becca Lentz

Angela Lovejoy
Kate Pierce
Kyra Williford
Amy Woodruff

Every **Bold** Performance
Starts With a **Brave** Idea.

FLight

Taking Brands to New Heights™

STRATEGY MEDIA DESIGN WEB FILM



www.flight.agency

Lyric's 2026 Summer Cast Bios

(In alphabetical order.)

RYDER ADAMS (SWEENEY TODD: *Apprentice*) – AT LYRIC: *Joseph and the Amazing Technicolor Dreamcoat*. LYRIC ACADEMY: *Footloose*. OTHER THEATRE: *Newsies, Bright Star, Oliver!, Mary Poppins, Jr., The Sound of Music, The Wizard of Oz, M.A.S.H., Southwest Playhouse.*

RENEE ANDERSON (SISTER ACT: *Sister Mary Patrick*) – AT LYRIC: *Mamma Mia, The Wizard of Oz, The Rocky Horror Show, Xanadu, The Producers, James & the Giant Peach, The Music Man, Oliver, Hello Dolly, Into the Woods, Annie Get Your Gun*. REGIONAL THEATRE: *Sister Act, Music Theatre of Wichita; The Music Man, The Munny; Oklahoma!, Kansas City Starlight*. OTHER THEATRE: *Great American Trailer Park Musical, 25th Annual Putnam County Spelling Bee, Zombie Prom, You're a Good Man Charlie Brown, OKC Rep Theatre; Peter Pan, Hedwig & the Angry Inch, Company, The Pollard.*

JENIVIEVE AQUINO (ANNIE: *Duffy-Leapin' Lizards Cast*) AT LYRIC: *Joseph and The Amazing Technicolor Dreamcoat, Lyric's A Christmas Carol* (2024-25). LYRIC ACADEMY: *Disney Medley at Disney's Imagination Campus, Addams Family*. REGIONAL THEATRE: *Junie B's Essential Survival Guide, Junior Theatre Festival; Shrek Jr, National Performing Arts*. OTHER THEATRE: *Beauty and the Beast Jr, Kismet Arts*. TELEVISION: *Metropolitan Library Summer Reading Program: Color Our World!*, ADDITIONAL CREDITS: *Barbizon Modeling and Acting School Graduate, IPOP 2025 TV Beauty Winner, Dallas Barbizon 2025 Division 3 Winner.*

JARED BARBEE (SWEENEY TODD: *Ensemble/US Sweeney Todd*) – is making his Lyric Theatre debut. OTHER THEATRE: *Street Scene, Anything Goes, The Mystery of Edwin Drood, Rent, Baby, The Light in the Piazza, Footloose, Ada and the Engine, Oklahoma City University*. ADDITIONAL CREDITS: *B.M. from Oklahoma City University.*

JESSIE BARTON (SWEENEY TODD: *Apprentice*) – AT LYRIC: *Joseph and The Amazing Technicolor Dreamcoat, Rodgers & Hammerstein's Oklahoma!, Lyric's A Christmas Carol* (2024-25), *The Prom, Carousel, Grease*. LYRIC ACADEMY: *Footloose, Hadestown (Teen Edition), Zombie Prom (Atomic Edition), Secret Garden*. OTHER THEATRE: *Jane Eyre, Manhattan Concert Series at The Lincoln Center; 9 to 5, Singin' in the Rain, Classen SAS Drama at Northeast*. ADDITIONAL CREDITS: *Quartz Mountain Art institution, Kelli O'Hara Award Spotlight Nominee.*

KENZIE BECKHAM (ANNIE: *Annie-Leapin' Lizards Cast*) – is making her Lyric Theatre debut. OTHER THEATRE: *Shrek Jr., The Music Man Jr., Aristocats KIDS, Madagascar Jr., The Sooner Theatre; The Best Christmas Pageant Ever Jr., Bedford Theatre; Annie KIDS, Seussical KIDS, Frozen KIDS, Aladdin Jr., Artworks Academy of Performing Arts; The Nutcracker, Premiere Dance Company.*

AVERY BENJAMIN (SWEENEY TODD: *Ensemble/US Johanna*) is making her Lyric Theatre debut. OTHER THEATRE: *The Sound of Music, La Cage Aux Folles, On the Town, College Light Opera Company; Baby, Gianni Schicchi, The Merry Widow, Oklahoma City University*. ADDITIONAL CREDITS: *B.M. in Musical Theater and Vocal Performance from Oklahoma City University.*

BETSY BERGTHOLD (ANNIE: *Kate-Oh My Goodness Cast*) – AT LYRIC: *Lyric's A Christmas Carol* (2025). OTHER THEATRE: *A Little Princess, Alice in Wonderland, Storyteller Theatre OKC; A Christmas Story, Music Man Jr, Sooner Theatre; The Bad Seed, Playcrafters Barn; Sound of Music, Oliver!, The Spotlight Theater. FILM: East of Middle West, Dryland, The Driftless, Paper Plates, Laundry Monster, Bear in a Flower Dress*. TELEVISION: *Easy*. ADDITIONAL CREDITS: *OYSing Choir, State Farm promo as Young Caitlin Clark.*

JASON BIAS (ANNIE: *Bert Healy; SISTER ACT: Monsignor O'Hara*) – AT LYRIC: *Waitress (Assistant Director), Rodgers & Hammerstein's The Sound of Music, The Play That Goes Wrong, Lyric's A Christmas Carol, Lyric's Musical Interactive: Kids Clubhouse, Titanic, Sweeney Todd: The Demon Barber of Fleet Street*. REGIONAL THEATRE: *The Golden Apple, Annie Get Your Gun, Lyric Stage*. OTHER THEATRE: *Ragtime, Poteet Theatre; Company I Do, I Do!, Brick Road Theatre; The Sound of Music, My Fair Lady, Garland Summer Musicals*. *B.M. from Oklahoma City University.*

SHAWNTEL BLACK (ANNIE: *Pepper-Leapin' Lizards Cast*) – AT LYRIC: *Lyric's A Christmas Carol, Matilda*. OTHER THEATRE: *The Little Mermaid, Metro Youth Theater; Mean Girls Jr., Artwork Academy; Ransom, Transformation Church; A Controversial Love, Star Theatre; Hadestown, Putnam City Schools*. ADDITIONAL CREDITS: *Miss Oklahoma Preteen 2024, National American Miss.*

ALEXANDRIA BLUE (SWEENEY TODD: *Beggar Woman*) – AT LYRIC: *Rodgers & Hammerstein's The Sound of Music, Lyric's A Christmas Carol, Lyric's Musical Interactive: Will Rogers, The Sound of Music*. OTHER THEATRE: *She Loves Me, August: Osage County, Sister Act, Sweeney Todd: The Demon Barber of Fleet Street, University of Central Oklahoma Musical Theatre; Orfeo ed Euridice, University of Central Oklahoma Opera; The Secret Garden, Poteet Theatre.*

ILO BONNER (ANNIE: *Apprentice*) – AT LYRIC: *Joseph and the Amazing Technicolor Dreamcoat*. OTHER THEATRE: *42nd Street, Legally Blonde, Hadestown (Teen Edition), Cats, Fiddler on the Roof, Mean Girls, Addams Family, Oliver Jr., Bugsy Malone Jr., Studio of the Sooner Theatre*. ADDITIONAL CREDITS: *Trolls The Musical Jr., Beetlejuice, Junior Theatre Festival.*

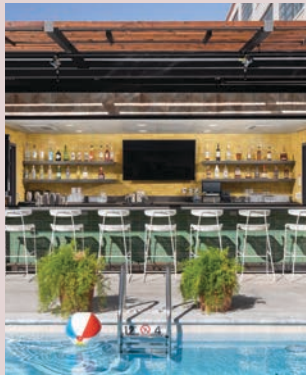
RODNEY BRAZIL (ANNIE: *Drake*) – AT LYRIC: *Newsies, Mother Road, Frost/Nixon, The Odd Couple, The Rocky Horror Show, Lyric's A Christmas Carol*. REGIONAL THEATRE: *Texas, Pioneer Amphitheatre*. OFF-OFF BROADWAY: *Meaningless; Under St. Marks; Presley Tweed: Fancy AF, The Rat*. OTHER THEATRE: *Schoolhouse Rock, Live!, Oklahoma Children's Theatre; Zona, Theatre Crude; The Divine Sister, The Boom; The Merry Wives of Windsor, Oklahoma Shakespeare in the Park*. ADDITIONAL CREDITS: *Member of Dramatists Guild of America.*

SAM BRIGGS (SWEENEY TODD: *Ensemble/Dance Captain/US Adolfo Pirelli*) – AT LYRIC: *Beautiful: The Carole King Musical*. REGIONAL THEATRE: *Rodgers & Hammerstein's The Sound of Music, The Pirates of Penzance, Into the Woods, Tulsa Opera; Sunday in the Park with George, American Theatre Company; Daddy Long Legs, Fiddler on the Roof, Ragtime, Tulsa Performing Arts Center; 1776, Wichita Grand Opera; Carousel, South Pacific, Will Rogers Stage Foundation; Sweeney Todd: The Demon Barber of Fleet Street, Reduxion Theatre Co.; Oklahoma!, Discoveryland. FILM: *Heaven's Date*. TELEVISION: *Centuries Collide, The Story Behind the Story*. ADDITIONAL CREDITS: *B.M. from the University of Oklahoma.**

CLARA BROSEN (ANNIE: *Sandy*) – is making her Lyric Theatre debut. She is trained at The Dog Den, owned by her dad, Travis Brosen, winner of CBS' *Greatest American Dog* and Host/Producer of Animal Planet's *My Big Fat Pet Makeover* and Discovery+'s *The Dog Games*. Clara loves learning, performing, and being everyone's best friend. This is her first theatrical role, and she hopes to steal your heart (and maybe a treat or two).

MARY BROZINA-WIERICK (ANNIE: *Mrs. Pugh*) – AT LYRIC: *Rodgers & Hammerstein's Cinderella (Music Director/Conductor), King of Pangaea (Assistant Music Director/Conductor)*. REGIONAL THEATRE: *Title of Show, Pollard Theatre; Jesus Christ Superstar, Oklahoma Repertory Theatre; Little Me, City Rep Theatre; Rent, Company, Laurel*

A STAY WORTHY OF A STANDING OVATION.



FORDSON HOTEL

405-982-6900 | @FORDSONHOTEL
900 W. MAIN ST. OKLAHOMA CITY, OK



SCAN TO BOOK SPECIAL RATE

Lyric's 2026 Summer Cast Bios

(In alphabetical order.)

Mill Playhouse. OTHER THEATRE: *Nine*, University of Central Oklahoma ADDITIONAL CREDITS: B.M. at Elon University; M.M. at University of Central Oklahoma; Professor of Voice at Oklahoma City University and the University of Central Oklahoma.

CHRISTOPHER BRUNO (SISTER ACT: *Ensemble/Fight Captain*) AT LYRIC: *Rodgers & Hammerstein's Oklahoma!*, *Joseph and the Amazing Technicolor Dreamcoat*. REGIONAL THEATRE: *From Sea To Shining Sea*, Papermill Playhouse New Voices. OTHER THEATRE: *The Polar Express*, Rail Events/Warner Brothers; *White Christmas*, *Anything Goes*, *The Drowsy Chaperone*, Oklahoma City University; *Something Rotten!*, Bergen County Academies; *Mary Poppins*, *Beauty and the Beast*, Carl Pfeifer Performing Arts Center. FILM: *Listen*. ADDITIONAL CREDITS: Current Junior Dance Major at Oklahoma City University.

TRACE BURCHART (SISTER ACT: *Ensemble*; SWEENEY TODD: *Tobias Ragg*) – AT LYRIC: *Jersey Boys*. REGIONAL THEATRE: *Rent*, Southern Plains Productions; *A Grand Night for Singing*, Tent Theatre; *Alice by Heart*, Queensbury Theatre. OTHER THEATRE: *Spelling Bee*, *Assassins*, *Company*, The University of Oklahoma. ADDITIONAL CREDITS: B.F.A. from the University of Oklahoma.

BRANDON BURTON (SISTER ACT: *Eddie Souther*) – is making his Lyric Theatre debut. OTHER THEATRE: *Emma*, *Trouble in Mind*, *A Flea in Her Ear*, *Titus Andronicus*, *Much Ado About Nothing*, *Richard III*, Cincinnati Shakespeare Company; *In the Nighttime* (Before the Sun Rises), *PUFFS*, Know Theatre of Cincinnati; *Dreamgirls*, The Carnegie in Covington; *Violet*, NOVA (formerly Venture Theatre). FILM: *Sarah's Oil*, *Bones and All*, *13th & Republic*, *The Belle and Boone Helm*.

ELISABETH CASTOR (ANNIE: *Duffy-Oh My Goodness Cast*) AT LYRIC: *Mary Poppins*. LYRIC ACADEMY: *Oklahoma! Interactive*, *Cinderella Interactive*. OTHER THEATRE: *Seussical*, *Junie B Jones, Jr.*, *Honk, Jr.*, Playroom Theatre Company; *Urinetown*, Spotlight Acting Academy.

GREER CAUDLE (ANNIE: *Tessie-Leapin' Lizards Cast*) – AT LYRIC: *Rodgers & Hammerstein's The Sound of Music*. OTHER THEATRE: *Matilda*, *Shrek Jr.*, *The Music Man Jr.*, *The Little Mermaid Jr.*, *Alice in Wonderland Jr.*, *Annie Jr.*, *Frozen Jr.*, *A Christmas Story*, *Seussical The Musical*, Sooner Theatre. FILM: *13 Fold* (SAG Aftra), *Just the Janitor*.

JESSICA COLEMAN (SISTER ACT: *Ensemble/US Mary Martin of Tours*) – is making their Lyric Theatre debut. OTHER THEATRE: *The Importance of Being Earnest*, *The Play That Goes Wrong*, Bridgeman Theatre; *Return to Sender*, Emerge Theatre; *Lulu and the Long Walk*, *The Color Purple*, HopeRep; *Puffs*, FSCJ Main Stage; *SpongeBob SquarePants The Broadway Musical*, Players by the Sea; *Dracula Radio Show*, FSCJ Studio BB. ADDITIONAL CREDITS: 3 *Little Pigs*, Lewandowski BBT (Director).

RYAN BRUCE CORLEY (SWEENEY TODD: *Swing*) – OTHER THEATRE: *A Christmas Carol*; *A Ghost Story*, *Bye Bye Birdy*, Shawnee Little Theatre; *A Little Night Music*, *Cinderella*, *The Pajama Game*, *The Wiz*, *School House Rock*, East Central University Theatre. ADDITIONAL CREDITS: Blue Knights Drum and Bugle Corps 2008, Phantom Regiment Drum and Bugle Corp 2010, Drum Corps International.

MACKENZIE CRAVENS (SWEENEY TODD: *Apprentice*) is making her Lyric Theatre Debut. LYRIC ACADEMY: *Footloose*, *Addams Family*, *Hadestown*, *Peter Pan*; *A Devised Play*, *Zombie Prom*, *Little Mermaid*, *Mean Girls*, *Madagascar*, *Puffs*, *Newsies*, *Elephant and Piggie: We Are in a Play!*. OTHER THEATRE: *A Midsummer Night's Dream*, *The Wonderful Wizard of Oz*, *Storytellers OKC*; *Our Town*, Oklahoma Summer Arts Institute.

THOMAS E. CUNNINGHAM* (ANNIE: *Oliver Warbucks*) – AT LYRIC: *The Fantasticks*, *Les Miserables*, *Ragtime*, *Sweeney Todd*; *The Demon Barber of Fleet Street*, *Joseph and the Amazing Technicolor Dreamcoat*. BROADWAY TOURS: *Evita*, *The Phantom Of The Opera*. OFF-BROADWAY: *Ivanov*, *Macgregor's*, *Lyz*, INTAR. FILM: *The Hunt*, *Skid*, *Soul's Midnight*, *Rats*, *Army Of Frankensteins*, *Sitting Down In Public*, *For Love Of The Game*. TELEVISION: *Guiding Light*. ADDITIONAL CREDITS: Oklahoma City Philharmonic, Soloist.

SOPHIA DAVIES (ANNIE: *Ensemble/Dance Captain*) – AT LYRIC: *Rodgers & Hammerstein's Oklahoma!*, *The Wizard of Oz*. OTHER THEATRE: *Tuxedo*, *The Great American Song Factory*, *World Rhythms*, *Fiesta Caliente*, ABBA, Regent Seven Seas Cruises; *Coming Home For Christmas*, Oklahoma City Philharmonic; *Holiday Spectacular*, *MOVE!*, *We're Back Again*, *Project 21*, *Rep Company*, *Pep Dancers*, Oklahoma City University. ADDITIONAL CREDITS: B.P.A. in Dance Performance From Oklahoma City University, Outstanding Dance Performance Major Award, Cobalt Award for Most Promising Dance Performance Major.

* Member Actors' Equity Association

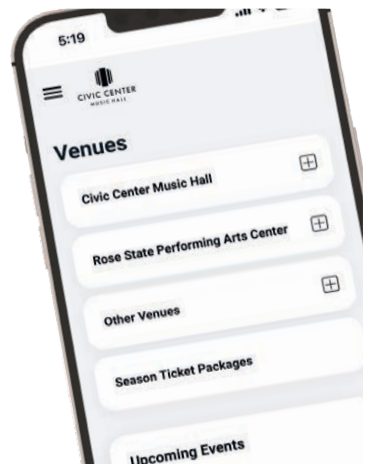
Buy Smart, Buy Direct

Guaranteed tickets, every time.

Always buy from the Official Ticket Source of

Civic Center Music Hall
Rose State Performing Arts Center
Lyric at the Plaza

Visit okcciviccenter.venue.net



Lyric's 2026 Summer Cast Bios

(In alphabetical order.)

CHLOE DAVIS (ANNIE: *Apprentice/US Star To Be*) – AT LYRIC: *Joseph and the Amazing Technicolor Dreamcoat*, *Mary Poppins*. LYRIC ACADEMY: *Footloose*, *The Addams Family*, *Hadestown Teen Edition*, *Curious Incident of the Dog in the Night-time*, *Mean Girls*, *Secret Garden*, *Big Fish*, *Cyrano De BergerShack*. REGIONAL THEATRE: *A Territorial Christmas Carol*, Pollard Theatre. OTHER THEATRE: *Sweeney Todd: The Demon Barber of Fleet Street*, Kismet Arts Studio & Theatre. OTHER: *Seussical the Musical*, *Beauty and the Beast*, *Wizard of Oz*, *I Never Saw Another Butterfly*, *Elf the Musical*, Crossings Christian School.

LUANDA DE HILSTER (ANNIE: *Swing/US Mrs. Pugh & Mrs. Greer*) – is making her Lyric Theatre debut. OTHER THEATRE: *Guys & Dolls*, *Chicago*, *Legally Blonde*, *A Gentleman's Guide to Love & Murder*, University of Oklahoma. ADDITIONAL CREDITS: *The Polar Express*, Rail Events/Warner Brothers.

BARBARA FOX DEMAIO (SISTER ACT: *Sister Mary Martin of Tours/US Mother Superior*) – AT LYRIC: *Freaky Friday*, *Titanic*, *Grease*, *Sound of Music*. REGIONAL THEATRE: *A Funny Thing Happened on the Way to the Forum*, *City Rep*; *Gypsy*, *Upstage Theatre*; *Company*, *Rose State Theatre*; *Bon Appetit! The Medium*, *Il Barbiere di Siviglia*, *Hansel and Gretel*, *Painted Sky Opera*. ADDITIONAL CREDITS: Exec. Dir. Emerita, *Painted Sky Opera*, *Verdi and Puccini specialist*, aging voice specialist, B.M. and M.M. Oklahoma City University, D.M.A. in Vocal Pedagogy Shenandoah Conservatory. Prof. of Voice at University of Central Oklahoma.

DAVID H. DOBSON (ANNIE: *F.D.R.*) – AT LYRIC: *Beautiful: The Carole King Musical*, *Rodgers & Hammerstein's The Sound of Music*, *Kinky Boots*, *Frost/Nixon*, *West Side Story*, *Les Misérables*, *A Funny Thing Happened on the Way to the Forum*, *Little Me*. REGIONAL THEATRE: *The Rocky Horror Show*, *Cabaret*, *Love Letters*, *The Runner Stumbles*, *Deathtrap*, *Carpenter Square Theatre Company*; *Godspell*, *I Hate Hamlet*, *One Flew Over the Cuckoo's Nest*, *110 in the Shade*, *Joseph and the Amazing Technicolor Dreamcoat*, *Jewel Box Theatre*. He is also currently on Lyric's Board of Directors, and a trustee of The Thelma Gaylord Endowment Fund.

KEVIN ECKARD (SWEENEY TODD: *Ensemble/US Judge Turpin*) – AT LYRIC: *Jekyll and Hyde*, *Jesus Christ Superstar*. OTHER THEATRE: *Tosca*, Oklahoma City Philharmonic; *Lucia di Lammermoor*, *The Magic Flute*, *Painted Sky Opera*; *Albert Herring*, Indianapolis Opera; *The Medium*, Tulsa Opera; *Barber of Seville*, *Don Giovanni*, *Wichita Grand Opera*; *Saint Seans' Christmas Oratorio*, *Canterbury Voices*; *The Creation*, Tulsa Choral; *Mozart's Requiem*, *Bartlesville Choral*; *Handel's Messiah*, *Enid Symphony*. ADDITIONAL CREDITS: Professor of Voice at the University of Central Oklahoma.

DARION ELIE (SISTER ACT: *TJ*) – is making his lyric debut. REGIONAL THEATRE: *Beautiful: The Carole King Musical*, *Broadway Rose Theatre*; *Beautiful: The Carole King Musical*, *Farmers Alley Theatre*. OTHER THEATRE: *Company*, *The 25th Annual Putnam County Spelling Bee*, University of Oklahoma. ADDITIONAL CREDITS: Singer-Songwriter; B.F.A. in Musical Theater from University of Oklahoma.

CALLIE FLATT (ANNIE: *Molly-Leapin' Lizards Cast*) – AT LYRIC: *Joseph and the Technicolor Dreamcoat*. LYRIC ACADEMY: *Legally Blonde Jr.*. OTHER THEATRE: *Beetlejuice Jr.*, *Annie Jr.*, *Aristocats*, *Kismet Arts Studio & Theatre*; *The Addams Family*, *Spotlight Acting Academy*.

BRYAN FORTUNATO (SWEENEY TODD: *Ensemble/US Tobias Ragg*) – is making his Lyric Theatre debut. REGIONAL THEATRE: *West Side Story*, *Fulton Theatre*; *West Side Story*, *Footloose*, *Anastasia*, *Maine State Music Theatre*. OTHER THEATRE: *Sweeney Todd*, *Guys and Dolls*, *Sister Act*, *Texas State University*. ADDITIONAL CREDITS: *Texas State University B.F.A. Musical Theatre 2027*.

SINCLAIR FREEMAN* (SISTER ACT: *Curtis Jackson*) – is making his Lyric Theatre debut. REGIONAL THEATRE: *Ragtime*, *A Christmas Carol*, *Dallas Theater Center*; *The Color Purple*, *Kansas City Repertory Theater*; *All is Calm*, *Stage West*; *Natasha, Pierre*, and *the Great Comet of 1812*, *Theatre Three*. OTHER THEATRE: *The African Company Presents Richard III*, *Soul Rep Theatre*; *A Chorus Line*, *Theatre Arlington*; *The Elaborate Entrance of Chad Deity*, *Circle Theater*. EDUCATION: *Opera*, *Southern Methodist University*.

EMMERSON FROST (ANNIE: *Molly-Oh My Goodness Cast*) AT LYRIC: *Joseph and the Technicolor Dreamcoat*. LYRIC ACADEMY: *Legally Blonde Jr.*, *The Addams Family*, *Press Start*. OTHER CREDITS: *Oliver!*, *Heritage Hall Performing Arts*; *Moana Jr.*, *Willy Wonka Jr.*, *Newsies Jr.*, *Studio J Performing Arts*; *Little Mermaid Jr.*, *St. Mary's Episcopal School*; *Hoodwinked*, *Madeline*, *CeCe Farha's Range of Motion Dance Studio*. ADDITIONAL CREDITS: 2026 Member Circle the State with Song MS Choir.

AVERY FUNKE (ANNIE: *Tessie-Oh My Goodness Cast*) – is making her Lyric Theatre debut. OTHER THEATRE: *Seussical Jr.*, *Rudolph the Red-Nosed Reindeer Jr.*, *Alice in Wonderland Jr.*, *Elf Jr.*, *Shrek Jr.*, *Spotlight Acting Academy*; *Junie B. Jones Jr.*, *Stage 405*.

MANNY GALLEGOS (SISTER ACT: *Swing*) – AT LYRIC: *The Prom*, *Mary Poppins*. LYRIC ACADEMY: *Mean Girls* (High School Version). OTHER THEATRE: *Sideshow*, *Upstage Theatre*; *Chicago*, *City of Angels*, *University of Central Oklahoma*; *The Addams Family*, *Ada High School*.

SAVANNAH GORDON (SWEENEY TODD: *Ensemble*) – is making her Lyric Theatre debut. OTHER THEATRE: *The Pirates of Penzance*, *Tulsa Opera*; *The Magic Flute & Carmen*, *Painted Sky Opera*; *The Consul & Hansel and Gretel*, *University of Central Oklahoma*. ADDITIONAL CREDITS: *Alto I*, *Canterbury Voices*. B.M. from the University of Central Oklahoma.

CALEB GRAVES (SWEENEY TODD: *Apprentice*) – AT LYRIC: *Joseph and the Amazing Technicolor Dreamcoat*, *Lyric's A Christmas Carol* (2023 & 2025). LYRIC ACADEMY: *Footloose*, *Oklahoma! Interactive*, *Hadestown: Teen Edition*, *Zombie Prom*, *Mean Girls: High School Edition*, *The Secret Garden*, *You're a Good Man Charlie Brown*, *Big Fish*, *Newsies*, *Cyrano de Bergershack*, *13 the Musical*. OTHER THEATRE: *Tuck Everlasting*, *Grease*, *Into the Woods*, *Curtains*, *Spongebob the Musical*, *Artworks Academy*.

KAYDEN GROVENBURG (ANNIE: *Apprentice*) – AT LYRIC: *Lyric's A Christmas Carol*, *Rodgers & Hammerstein's OKLAHOMA!*. LYRIC ACADEMY: *Addams Family*, *Lyric's Thelma Gaylord Academy*. OTHER THEATRE: *Disney's Mary Poppins*, *Into the Woods*, *Chicago*, *The Crucible*, *Edmond* *North High School*; *Mean Girls*, *The Drowsy Chaperone*, *Young Frankenstein*, *Spotlight Acting Academy*.

SCOTT GUTHRIE* (SWEENEY TODD: *Sweeney Todd*) – AT LYRIC: *The Play That Goes Wrong*, *Forever Plaid*, *Forever Plaid: Plaid Tidings*, *Carousel*, *Pippin*, *Rodgers & Hammerstein's The Sound of Music*, *A Chorus Line*. REGIONAL: *LIFE SUCKS.*, *OKC REP*; *Bridges of Madison County*, *Philadelphia Theatre Company*; *The Full Monty*, *Theatre-By-The-Sea*; *Next to Normal*, *Florida Studio Theatre*; *Les Misérables*, *Ocean State Theatre*. OFF-BROADWAY: *Carnival!*, *A Man of No Importance*. NATIONAL TOURS: *South Pacific*, *Forever Plaid*. ADDITIONAL CREDITS: Faculty of the Max Weitzenhoffer School of Musical Theatre, The University of Oklahoma.

CINDY HANSKA (SISTER ACT: *Ensemble/US Mary Theresa*) – is making her Lyric Theatre Debut. REGIONAL THEATRE: *August Osage County*, *Lysistrata*, *OKC Rep*. OTHER THEATRE: *Matilda*, *White Christmas*, *Sister Act*, *Sooner Theatre*; *Guys and Dolls*,

LEARN WITH LYRIC

at the Thelma Gaylord Academy

FALL PROGRAMS

Auditions are August 8th & 9th!



Ages 8-18



Ages 14-18



Ages 8-18



Ages 12-18

The RoKademy
Experiment band
presents:

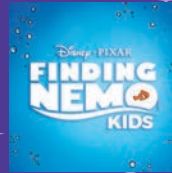


Ages 14-18



Academy
Professional Artist
Training Program

Ages 10-18



Ages 6-10
No audition
required!

FALL CLASSES

Receive top-notch instruction for ages five and up in musical theatre areas including dance, voice, acting, college prep, private lessons, and more!

Scan here to visit
the audition sign up:



405 524-9310

thelmagaylordacademy.com



LYRIC THEATRE
THELMA GAYLORD ACADEMY



Let Lyric Theatre be part of your next production!

RENTALS AVAILABLE FOR:

COSTUMES | SCENERY | PROPS | WIGS

Complete rental packages available including
BEAUTIFUL, WAITRESS and **OKLAHOMA!**

For more information, please call
405-524-9310 x106 or visit
lyrictheatreokc.com/rentals

Lyric Theatre's 2025 Production of
Rodgers & Hammerstein's OKLAHOMA!

COSTUME DESIGN BY: **JEFFREY MEEK**
LIGHTING DESIGN BY: **HELENA KUUKA**
PROPERTIES DESIGN BY: **COURTNEY STRONG**
SCENIC DESIGN BY: **JASON FOREMAN**
WIG DESIGN BY: **JOANNE MIDDLETON-WEAVER**
DIRECTED BY: **MICHAEL BARON**
PHOTO BY: **CARL SHORTT**



Lyric's 2026 Summer Cast Bios

(In alphabetical order.)

Granbury Opera House; *The Music Man*, Jewel Box Theatre. FILM: *You People*, *The Stand In*. TELEVISION: *The Lowdown*. ADDITIONAL CREDITS: B.F.A. in Theatre from the University of Oklahoma.

MICA MARTINEZ HARKEY (SWEENEY TODD: *Ensemble/US Beggar Woman*) – AT LYRIC: Lyric's *A Christmas Carol*, *Mary Poppins*, *Rodgers & Hammerstein's Carousel*, *Titanic*. REGIONAL THEATRE: *The Music Man in Concert*, Oklahoma City Repertory Theatre; *Milk and Honey*, *Chagall in School*, The Jewish Theatre of Oklahoma. OTHER THEATRE: *Milk and Honey*, *My Fair Lady*, UCO Broadway Tonight; *Nine*, *Merrily We Roll Along*, *Man of La Mancha*, *Grease*, University of Central Oklahoma. ADDITIONAL CREDITS: B.M. in Musical Theatre from the University of Central Oklahoma.

LONDON BROOKE HINCKLEY (ANNIE: *Annie-Oh My Goodness Cast*) – is making her Lyric Theatre debut. OTHER THEATRE: *Shrek*, *The Music Man*, *The Little Mermaid*, *A Christmas Story*, *Annie*, *Alice in Wonderland*, *Finding Nemo*, *Sooner Theatre*. ADDITIONAL CREDITS: *Dreamworks Trolls*, Junior Theater Festival.

BRETT HOVER (SWEENEY TODD: *Apprentice*) – AT LYRIC: *Joseph and the Amazing Technicolor Dreamcoat*, *Mary Poppins*. LYRIC ACADEMY: *Hadestown* (Teen Edition), *Seussical Jr. High School Musical Jr.*, *James and the Giant Peach Jr.*, *Secret Garden*. OTHER THEATRE: *Chicago*, *Much Ado About Nothing*, *Into the Woods* (Kelli O'Hara Award nominee), *39 Steps*, *Mary Poppins*, Edmond North High School; *High School Musical Jr.*, Stage 405 Theater Arts Studio.

MEGUMI ISHIBASHI (ANNIE: *Ensemble/US Grace*; SISTER ACT: *Ensemble/US Tina & Michelle*) – is making her Lyric Theatre debut. OTHER THEATRE: *Rhonda Rips It Up!*, Oklahoma City University; *Così fan tutte*, *Le nozze di Figaro*, *Die Zauberflöte*, *L'elisir d'amore*, *La Traviata*, *La Bohème*, Tokyo University of the Arts. ADDITIONAL CREDITS: B.A. in Music from Tokyo University of the Arts; currently pursuing an M.M. in Musical Theatre at Oklahoma City University.

CALEB KEZEOR (SISTER ACT: *Swing*) – is making his Lyric Theatre debut. OTHER THEATRE: *Anastasia*, *White Christmas*, *Anything Goes*, *The Drowsy Chaperone*, Oklahoma City University. ADDITIONAL CREDITS: Rising Junior Musical Theatre major at Oklahoma City University and member of Dr. Autumn West's voice studio.

MEL KINCAID (SWEENEY TODD: *Ensemble*) – is making his Lyric Theatre debut. ADDITIONAL CREDITS: Member of Canterbury Voices and Canterbury Chamber Voices, Staff Singer at St. Paul's Episcopal Cathedral.

CORY KING (SISTER ACT: *Sister Mary Lazarus*) – is making her Lyric Theatre debut. OTHER THEATRE: *Company*, *Legally Blonde*, *The Little Mermaid*, *Spamalot*, *Beauty and the Beast*, *Dirty Rotten Scoundrels*, *The Full Monty*, *The Producers*, *SpongeBob The Musical*, *The Odd Couple*, Pollard Theatre; *Greets 2*, *Danny These Days*, Next Stage. ADDITIONAL CREDITS: B.A., Pepperdine University, J.D., University of Oklahoma College of Law; Post-grad, Pepperdine Caruso School of Law.

MICHAEL KOLLMORGEN (SWEENEY TODD: *Beadle Bamford*) AT LYRIC: *Mary Poppins*, Lyric's *A Christmas Carol*. OTHER THEATRE: *Lucia Di Lammermoor*, Painted Sky Opera; *Carmen*, *Aida*, Houston Grand Opera; *La bohème*, *Eugene Onegin*, *The Crucible*, *Le Docteur Miracle*, Opera Santa Barbara; *Of Mice and Men*, *La Cenerentola*, Tulsa Opera; *Roméo et Juliette*, *The Crucible*, *Così fan tutte*, *Anna Karenina*, The University of Houston; *L'elisir d'amore*, *Amahl and the Night Visitors*, Oklahoma State University Opera. ADDITIONAL CREDITS: B.M. Oklahoma State University; M.M. University of Houston.

EMERY LANE (ANNIE: *Kate-Leapin' Lizards Cast*) – is making her Lyric Theatre debut. OTHER THEATRE: *Junie B. Jones Jr.*, *Annie Jr.*, *The Little Mermaid Jr.*, Stage 405; *Finding Nemo Jr.*, Reclaiming Arts.

COURTNEY LAVENDER (SWEENEY TODD: *Ensemble*) AT LYRIC: *Rodgers & Hammerstein's The Sound of Music*. ADDITIONAL CREDITS: Bachelor of Musical Arts from The University of Oklahoma.

BLAKE LAWRENCE (SWEENEY TODD: *Ensemble*) – AT LYRIC: *Annie* (2004), *Chess*, *Jekyll & Hyde*. LYRIC ACADEMY: *Into the Woods*, *Oliver!*. OTHER THEATRE: *Hello, Dolly!*, University of Central Oklahoma; *Shrek the Musical*, Poetee Theatre.

DALLAS LISH (SWEENEY TODD: *Anthony Hope*) – AT LYRIC: *Rodgers & Hammerstein's OKLAHOMA!*, *Les Misérables*, *The Glass Menagerie*, *Some Enchanted Evening*. REGIONAL THEATRE: *Oklahoma!*, *Discoveryland!* OTHER THEATRE: *Very Merry Pops*, Oklahoma City Philharmonic; *Sunset Boulevard*, *White Christmas*, *Milk and Honey*, Broadway Tonight; *Sweet Smell of Success*, *High Society*, *Promises, Promises*, University of Central Oklahoma; *Annie Get Your Gun*, *Anything Goes*, *Edmond Summer Stock*; *Into the Woods*, *Big River*, Northeastern Oklahoma A&M; *Oklahoma!*, *Fiddler on the Roof*, Miami Little Theatre.

EDWIN LORNE (SISTER ACT: *Ensemble/US Eddie*; SWEENEY TODD: *Ensemble/US Beadle Bamford*) – is making his Lyric Theatre debut. OTHER THEATRE: *Shrek The Musical*, *Big River*, *The Lion King*, *Joseph and The Amazing Technicolor Coat*, Heritage Hall School.

KRISTINA LOVE* (SISTER ACT: *Deloris Van Cartier*) – AT LYRIC: *Little Shop of Horrors*, *The Who's Tommy*, *Hairspray*, *Ragtime*, *Oliver*, *Dreamgirls*. INTERNATIONAL CREDITS: *Tina*, *The Hunchback of Notre Dame*, *Sister Act*, *Hercules*, *Aladdin*, *Rocky*. WEST END: *Tina the Musical*. FILM: *Tina Turner-One of the Living*. ADDITIONAL CREDITS: *Disney 100 in Concert Arena Tour*, *Hollywood in Vienna with Alan Menken*, *Pasek and Paul at the Stage Club*; B.F.A. in Musical Theatre Performance from The University of Oklahoma; Artistic Ambassador UNICEF Germany.

ERIC MCNAUGHTON (SWEENEY TODD: *Judge Turpin*) – AT LYRIC: *Joseph and the Amazing Technicolor Dreamcoat*, *Rodgers & Hammerstein's Carousel*, *Fiddler on the Roof*, *The Drowsy Chaperone*, *Big Fish*, *Les Misérables*, *A Little Night Music*, *Big River*, *Call Me Madam*, *Ragtime*. REGIONAL THEATRE: *King of Pangea*, Aurora Theatre; *Sweeney Todd: The Demon Barber of Fleet Street*, Provincetown Theatre; *Titanic*, *Serenbe Playhouse*; *Urinetown*, OnStage Atlanta. OFF-BROADWAY: *The Whore of Sheridan Square*, LaMama, ETC. ADDITIONAL CREDITS: B.A. in Theatre Arts from Wake Forest University; Apprentice Company, Actors Theatre of Louisville.

SHELBY MOINETTE (SWEENEY TODD: *Ensemble*) – is making her Lyric Theatre debut. OTHER THEATRE: *Ruddigore*, Cimarron Opera; *Die Zauberflöte*, University of North Florida; *The Other World: A Requiem*, soloist with Canterbury Voices. ADDITIONAL CREDITS: Active member of Canterbury Voices and Canterbury Chamber Voices. B.A. in Vocal Performance from the University of North Florida.

CHARLIE MONNOT (ANNIE: *Ensemble/US Bert*) – AT LYRIC: Lyric's *A Christmas Carol* (201-2025), *Rodgers & Hammerstein's Carousel*, *Titanic*, *Hello*, *Dolly!*, *Fiddler on the Roof*, *Call Me Madam*, *Ragtime*. OTHER THEATRE: *Disaster!*, *Ghost*, *The Full Monty*, *Shrek*, *Lucky Stiff*, Pollard Theatre; *Hair*, *Sweeney Todd: The Demon Barber of Fleet Street*, Reduxion Theatre; *Ragtime*, Poetee Theatre; *Parade*, Upstage Theatre; *Little Shop of Horrors*, *Into the Woods*, *Sweet Charity*, Shawnee Little Theatre.



*The worldwide leader of
tax and compliance services.*

***Our End-to-End Tax and Compliance Management
Services Save You Time and Money***

CSI SERVICES:

- | | |
|-----------------------|----------------------------|
| ✓ State Registrations | ✓ Tax Filings & Remittance |
| ✓ FCC Registrations | ✓ Treasury Management |
| ✓ Registered Agent | ✓ Audit Defense |
| ✓ Tax Exemptions | ✓ Corporate Tax |
| ✓ Tax Mapping | ✓ Property Tax |
| ✓ Tax Rating | ✓ Tax Automation |

For More Information Contact:

Mark Lammert ☎ 407-367-8802 ✉ mark@csilongwood.com

Corporate Headquarters:

242 Rangeline Rd, Longwood, FL 32750

Lyric's 2026 Summer Cast Bios

(In alphabetical order.)

JANNA MONTGOMERY (SWEENEY TODD: *Ensemble*) – is making her Lyric Theatre debut. OTHER THEATRE: *Romeo and Juliet*, *Alice Through the Looking Glass*, Oxford Shakespeare Festival; *The Laramie Project*, University of Mississippi; Quilters, *Ordinary People*, *Carmen*, *How to Succeed in Business Without Really Trying*, *Noises Off*, *You're a Good Man Charlie Brown*, *Titanic*, *The Miracle Worker*, *Crazy for You*, *Man of La Mancha*, *Cinderella*, Oklahoma Christian University. ADDITIONAL CREDITS: Tennessee Williams Festival; Soprano Soloist-Oxford Civic Chorus; Mississippians Jazz Ensemble; OKC Masterworks Chorus; Canterbury Voices.

J. ROBERT MOORE* (SWEENEY TODD: *Rooster*) – AT LYRIC: *The Rocky Horror Show*, *Billy Elliot*, *Big Fish*. REGIONAL THEATRE: *Matilda*, *The Santaland Diaries*, *Buyer and Cellar*, *Peter and the Starcatcher*, Zach Theatre. OFF BROADWAY: *O Night Divine*, York Theatre; *Phish NYE*, Madison Square Garden. OTHER THEATRE: *The Boys in the Band*, San Pedro Playhouse; *Waiting for Godot*, *She Stoops to Conquer*, Classic Theatre of San Antonio; *Anything Goes*, Texas State University. ADDITIONAL CREDITS: M.F.A. Texas State University, Shakespeare's Globe Theatre, Royal Academy of Dramatic Arts.

KELLY MOORE (SWEENEY TODD: *Ensemble*) – is making his Lyric Theatre debut. OTHER THEATRE: *A Christmas Carol*, *On Broadway*, Lawton Community Theatre; *Forever Plaid*, *Lullaby of Broadway*, Carousel Productions; *Little Shop of Horrors*, Murray County Players; *Big River*, Shawnee Little Theatre; *Trial by Jury*, Oklahoma Baptist University. ADDITIONAL CREDITS: Canterbury Voices; B.M.E. from Oklahoma Baptist University.

JULIUS KANAL MOORE JR. (SWEENEY TODD: *Apprentice*) is making his Lyric Theatre debut. OTHER THEATRE: *Sweeney Todd: The Demon Barber of Fleet Street*, Kismet Arts Studio & Theatre; *Othello*, *The Little Mermaid*, Classen School of Advanced Studies.

MIKE MOWRY (SWEENEY TODD: *Ensemble / US Beadle*) AT LYRIC: *Titanic*. OTHER THEATRE: *My Fair Lady*, *My One and Only*, *The Gondoliers*, *La Traviata*, *La Boheme*, Oklahoma City University; *Anything Goes*, *Sweeney Todd: The Demon Barber of Fleet Street*, Oklahoma State University. ADDITIONAL CREDITS: Current member Canterbury Voices, Canterbury Chamber Voices. Past member of Oklahoma City Philharmonic Pops Chorus, Stillwater Chamber Singers; B.M. Vocal Performance from Oklahoma State University; Graduate Studies in Vocal Performance from Oklahoma City University; M.B.A. from Oklahoma Christian University.

DAKOTA MUCKELRATH (ANNIE: *Ensemble*) – is making his Lyric Theatre debut. OTHER THEATRE: *The Shark is Broken*, *Spamalot*, *Evil Dead The Musical*, *Spongebob The Musical*, The Pollard Theater.

AVA MUSGRAVES (SISTER ACT: *Ensemble*) – AT LYRIC: *Beehive-The 60's Musical*, *Joseph and the Amazing Technicolor Dreamcoat*. OTHER THEATRE: *Footloose*, *You're a Good Man, Charlie Brown*, *Iolanthe*, Oklahoma City University. ADDITIONAL CREDITS: B.M. Music Theatre from Oklahoma City University.

TALYN NOLAN (SISTER ACT: *Ensemble/Michelle/US Mary Patrick*) – AT LYRIC: *Beehive-The 60's Musical*, *Beautiful: The Carole King Musical*, *The Prom*. OTHER THEATRE: *The Little Mermaid*, *Sister Act*, Santa Fe High School.

RACHAEL PARSONS (SWEENEY TODD: *Johanna*) – is making her Lyric Theatre debut. REGIONAL THEATRE: *Jersey Boys*, *Jesus Christ Superstar*, Pittsburgh Musical Theater. OTHER THEATRE: *How to Succeed in Business Without Really Trying*, South Park Theatre; *White Christmas*, *Anything Goes*,

Rhondda Rips It Up, *Ballad of Baby Doe*, *Footloose*, Oklahoma City University; *The Little Mermaid*, PMT Conservatory. ADDITIONAL CREDITS: Aria 412 Concert Performer, Pursuing a B.M. in Music Theater/Vocal Performance at Oklahoma City University.

ELLEN PIERCE (SISTER ACT: *Sister Mary Robert*) – is making her Lyric Theatre debut. REGIONAL THEATRE: *Cats*, *Casa Mañana*; *A Grand Night for Singing*, *Crazy For You*, Music Theatre Wichita; *West Side Story*, North Carolina Theatre. OTHER THEATRE: *Company*, *The 25th Annual Putnam County Spelling Bee*, University Theatre. ADDITIONAL CREDITS: Musical Theatre Performance, B.F.A. from The University of Oklahoma.

MARINA QUINTANILLA (SWEENEY TODD: *Ensemble*) – is making her Lyric Theatre debut. OTHER THEATRE: *Some Enchanted Evening*, Upstage Theatre; *Godspell*, *Heathers*, *L'amico Fritz*, Oklahoma City University. ADDITIONAL CREDITS: B.A. Voice, M.M. Composition, Oklahoma City University.

KRAYSON RAYCE REED (ANNIE: *Apprentice*) – AT LYRIC: *Joseph and the Amazing Technicolor Dreamcoat*. OTHER THEATRE: *Urinetown*, *Curtains*, *Sweeney Todd: The Demon Barber of Fleet Street*, *Something Rotten*, *Peter and the Starcatcher*, *The Drowsy Chaperone*, Spotlight Acting Academy.

AVA RICHARDSON (ANNIE: *July-Leapin' Lizards Cast*) – is making her Lyric Theatre debut. REGIONAL THEATRE: *Gypsy*, *Frozen*, *Holiday Extravaganza*, Music Theatre Wichita. OTHER THEATRE: *The Little Mermaid, Jr.*, *Alice in Wonderland, Jr.*, *Joseph and the Amazing Technicolor Dreamcoat*, The Academy at Music Theatre Wichita; *Matilda*, Newton Community Theatre.

JILLIAN RINDLER (ANNIE: *Pepper-Oh My Goodness Cast*) AT LYRIC: *Joseph and the Technicolor Dreamcoat*. LYRIC ACADEMY: *Legally Blonde Jr.*, *Seussical Jr.*, *Finding Nemo Jr.*, *James and the Giant Peach Jr.*, *Xanadu Jr.*, *Annie Jr.*, *Madagascar Jr.*, *Aristocats KIDS*. OTHER THEATRE: *Carmen*, *Amahl and the Night Visitors*, *Painted Sky Opera*; *Wizard of Oz*, *Frozen Jr.*, *Honk Jr.*, *Container of Sharks*, *The Music Man*, *Willy Wonka Jr.*, *Casady School*; *The Nutcracker* (four seasons), *Cinderella*, Oklahoma City Ballet.

LUIS ROJAS (SISTER ACT: *Pablo*) – AT LYRIC: *Rodgers & Hammerstein's Oklahoma!*, *Joseph and the Amazing Technicolor Dreamcoat*. OTHER THEATRE: *Rent*, Southern Plains Productions; *Cabaret*, *Sooner Theatre*; *Hip Hop Nutcracker*, *Bonded*, *The Racey Show*, *Resurgence*, RACE Dance Collective; *Alfonsina*, *Danse En L'Air*, NYC. INTERNATIONAL: *El Club Del Hit*, *In the Heights*, *Spring Awakening*, El Juvenil Theatre, Argentina. TELEVISION: *Tu Voz Estéreo* (Caracol TV, Colombia).

BARBARA SCHOENHOFER (ANNIE: *Miss Hannigan*) – AT LYRIC: *Mamma Mia*, *Bye Bye Birdie*, *Hairspray*, *Swing*, *Oliver*, *42nd Street*, *Smokey Joe's*, *Chicago*, *Pump Boys and Dinettes*, *Will Rodger's Follies*, *Little Shop of Horrors*, *Pippin*, *A Chorus Line*. REGIONAL THEATRE: *Mamma Mia*, *The Moonlight Theatre*; *Tommy*, *Bat Boy*, *Stage One*; *Dames at Sea*, *The Virginia Stage Co.*; *White Christmas*, *Zach Theatre*. FILM: *Night Screams*, *Sway*. TELEVISION: *Night Court*.

CASEY SHAPIRO (SWEENEY TODD: *Ensemble*) – is making his Lyric Theatre Debut. OTHER THEATRE: *Into the Woods*, *Symphony No. 9 in D minor, Op. 125*, Oklahoma State University; *Messiah HWV 56*, *Requiem in D minor, K. 626*, *Mahler's Symphony No. 2, "Resurrection"*, Canterbury Voices. ADDITIONAL CREDITS: Vocal Music Education, B.A. from Oklahoma State University.



2026-2027 SEASON

Sponsored by paycom®



AUGUST 25-30



SEPTEMBER 22-27



DEC 29- JAN 3



NOVEMBER 4-15



MARCH 23-28



APRIL 13-18



MAY 25-30



AUGUST 11-23

SEASON SPECIAL!

SUBSCRIBERS GET THE

BEST BENEFITS

Guaranteed seats for sell out show

No-interest payment plans

Immediate Access to Season Specials HAMILTON, BLUEY'S BIG PLAY, WAITRESS THE BODYGUARD & OUTLANDER IN CONCERT

OKCBROADWAY.COM/SUBSCRIBE

Lyric's 2026 Summer Cast Bios

(In alphabetical order.)

SIERRA SIKES (ANNIE: *Lily St Regis*) – AT LYRIC: *The Rocky Horror Show* (2022 & 2025), *Rodgers & Hammerstein's Oklahoma!*, *Waitress*, *Jersey Boys*, *Head Over Heels*, *Distant Thunder*. REGIONAL THEATRE: *Disaster!*, Pollard Theatre. OTHER THEATRE: *The Wizard of Oz*, *Sooner Theatre*; *Rock of Ages*, *Nine*, *The Most Happy Fella*, *Merrily We Roll Along*, *The Theory of Relativity*, University of Central Oklahoma. TELEVISION: NBC's *The Voice* Season 25. ADDITIONAL CREDITS: B.M. in Musical Theatre from The University of Central Oklahoma; Original music is available on all streaming platforms under: Sierra Sikes & OK3.

SELENA SIMMONS (SISTER ACT: *Tina/Ensemble/US Deloris*) AT LYRIC: *Lyric's A Christmas Carol*. OTHER THEATRE: *Shrek the Musical*, *Poteet Theatre*; *The Color Purple*, *Kinky Boots*, *Matilda*, StageCentre LA.

KARA SIMPSON (ANNIE: *Grace Ferrell*) – AT LYRIC: *Rodgers & Hammerstein's The Sound of Music*, *Lyric's A Christmas Carol*, *Titanic*, *Footloose*, *The Wizard of Oz*, *Oklahoma!*, *Cinderella: A Literary Tale*, *Call Me Madam* (Lyric's Musical Theatre Interactive). OTHER THEATRE: *Annie*, *Mary Poppins*, *Meet Me in St. Louis*, *The Addams Family*, *Poteet Theatre*; *Iolanthe*, *Ruddigore*, *Cimarron Opera*. ADDITIONAL CREDITS: M.M.Ed. in Music Education, Kansas State University; B.M.A. in Voice, University of Oklahoma.

KARA STAIGER (SISTER ACT: *Sister Mary Theresa/US Mary Lazarus*; SWEENEY TODD: *Ensemble/US Mrs. Lovett*) – is making her Lyric Theatre debut. REGIONAL THEATRE: *The Full Monty*, *The Wick*; *Rudolph*, Orlando Rep. OTHER THEATRE: *The Sound of Music*, Theatre Tulsa; *Beauty and the Beast*, *Freeland*; *The Great American Trailer Park Musical*, American Theatre Company; *Urinetown*, Playhouse Tulsa. ADDITIONAL CREDITS: Studies voice with Kelly Slawson. Adjunct Vocal and Dance Professor at Oral Roberts University; Graduated with a B.F.A. in Musical Theatre from Oklahoma City University; Master's Degree in Education from Oral Roberts University.

JOEL STEPHENS (ANNIE: *Ensemble/US Rooster*; SISTER ACT: *Ensemble/Ernie/US Joey*) – AT LYRIC: *Rodgers & Hammerstein's Oklahoma!*, *The Rocky Horror Show*, *Beautiful: The Carole King Musical*, *Joseph and the Amazing Technicolor Dreamcoat*, *Waitress*, *Grease*, *Jersey Boys*, *Rodgers & Hammerstein's Oklahoma! Cinderella*, *Titanic*. REGIONAL THEATRE: *Rock of Ages*, Arts Center of Coastal Carolina; *Escape To Margaritaville*, Crane River Theatre. OTHER THEATRE: *Catch Me if You Can*, *Bonnie & Clyde*, *Little Women*, *She Loves Me*, *The Wedding Singer*, *Rock of Ages*, University of Central Oklahoma; *The Polar Express*, Rail Events/Warner Brothers.

MYLES STURNS-THOMAS (ANNIE: *Swing*; SISTER ACT: *Ensemble/US TJ & Curtis*) – AT LYRIC: *Joseph and the Amazing Technicolor Dreamcoat*. REGIONAL THEATRE: *Beautiful: The Carole King Musical*, Broadway Rose Theatre Company. OTHER THEATRE: *Oh L'Amour: The Erasure Musical*, *Rent*, *Company*, 25th Annual Putnam County Spelling Bee, *Crazy for You*, University of Oklahoma.

EMILY SULLIVAN (ANNIE: *Ensemble/Star To Be*; SISTER ACT: *Ensemble/Dance Captain*) – is making her Lyric Theatre debut. OTHER THEATRE: *Anastasia*, *Footloose*, *Baby*, *Godspell*, *Calvin Berger*, Oklahoma City University.

JESSICA TATE (ANNIE: *Mrs. Greer/US Miss Hannigan*; SISTER ACT: *Mother Superior*) – AT LYRIC: *Beautiful: The Carole King Musical*, *Rodgers & Hammerstein's The Sound of Music*, *Lyric's A Christmas Carol*, *Rodgers & Hammerstein's Carousel*, *Les Misérables*, *Mary Poppins*, *Fiddler on the Roof*, *Bright Star*, *Titanic*. FILM: *The Turkey Bowl*, *Gosnell*. TELEVISION: *The Last Defense*. OTHER THEATRE: *Bye Bye, Birdie*, *Circle Players*. ADDITIONAL CREDITS: Singer/Songwriter, B.M.E. from Harding University.

VISHAL VAIDYA* (SWEENEY TODD: *Adolfo Pirelli*) – is making his Lyric Theatre debut. REGIONAL THEATRE: *The Music Man*, *Olney Theatre*; *The Lunchbox*, *Swept Away*, Berkeley Rep; *Waitress*, West Virginia Public; *Bonnie and Clyde*, Bay Street; *Come Fall in Love*, The Old Globe; *A Christmas Carol*, Ford's Theater. BROADWAY: *Merrily We Roll Along*, *Groundhog Day*. OFF-BROADWAY: *TRASH*, Perelman Arts Center; *Road Show*, 1776, *Light in the Piazza*, New York City Center; *Einstein's Dreams*, Prospect Theater. FILM: *Merrily We Roll Along*. ADDITIONAL CREDITS: Two-time Helen Hayes Award nominee.

LINDSIE VANWINKLE-GUTHRIE (SWEENEY TODD: *Mrs. Lovett*) – AT LYRIC: *Waitress*, *The Prom*, *Mary Poppins*, *Rodgers & Hammerstein's Carousel*. OFF BROADWAY: *Nevermore*, *Flipside: The Patti Page Story*, *The Magdalene*, *A Dog Story*. NATIONAL TOUR: *White Christmas*. REGIONAL THEATRE: *White Christmas*, Westchester Broadway; *9 to 5: The Musical*, Merry Go Round Playhouse; *My Fair Lady*, *Grey Gardens*, 11th Hour Theatre Company; *The Mystery of Edwin Drood*, The Spitfire Grill Barnstormers Theatre; *Les Misérables*, Ocean State Theatre Co.; *Into the Woods*, *Sooner Theatre*. ADDITIONAL CREDITS: Graduate of University of Central Oklahoma.

OLIVIA WARNER (ANNIE: *Ensemble/US Lily St Regis*) – is making her Lyric Theatre debut. REGIONAL THEATRE: *A Chorus Line*, The Palace Theatre; *Damn Yankees!*, The Regional Theatre of Palouse. ADDITIONAL CREDITS: B.P.A in Dance Performance from Oklahoma City University.

ISAIAH WILLIAMS (ANNIE: *Ensemble*) – AT LYRIC: *Lyric's A Christmas Carol*, *Mother Road*. REGIONAL THEATRE: *RENT*, Southern Plains Productions; *Are You There?*, *A Christmas Carol*, Actors Theatre of Louisville. OTHER THEATRE: *Caged: an Allegory*, Impostors Theatre Company; *A Small Fire*, 3rd Act Theatre. ADDITIONAL CREDITS: Director and Designer, B.F.A. from Oklahoma City University with minors in Directing and Costume Technology.

NAYA WILLIAMS (ANNIE: *July-Oh My Goodness Cast*) – AT LYRIC: *Joseph and The Amazing Technicolor Dreamcoat*. LYRIC ACADEMY: *Legally Blonde Jr.*, *Addams Family*, *Seussical*, *Junie B.'s Essential Survival Guide to School Jr.* (Junior Theater Festival). OTHER THEATRE: *Shrek Jr.*, *Frozen Jr.*, *Annie Jr.*, *The Wizard of Oz*, Northwest Optimists Performing Arts Center. TELEVISION: *Color Our World*, Metropolitan Library System. ADDITIONAL CREDITS: Junior Theater Festival 2026 Performance All-Star.

ASHLEY WOYTAL (SISTER ACT: *Swing/US Mary Robert*) – is making her Lyric Theatre of Oklahoma debut. OTHER THEATRE: *The Wizard of Oz*, The Barn Theatre (Ozian/Crow Puppeteer); *Young Frankenstein*, *Bright Star*, *Rent*, *Heathers*, *Jesus Christ Superstar*, The University of Oklahoma; B.F.A. Musical Theatre, University of Oklahoma.

ZACHARY WRIGHT (ANNIE: *Ensemble/Drake Cover*; SISTER ACT: *Joey*) – AT LYRIC: *The Rocky Horror Show* (2025), *Waitress*. REGIONAL THEATRE: *The Hunchback of Notre Dame*, Kismet Arts Studio. OTHER THEATRE: *The Wedding Singer*, *Bonnie and Clyde*, *Little Women*, *Sweeney Todd*, *Goosebumps: The Phantom of the Auditorium*, University of Central Oklahoma; 25th Annual Putnam County Spelling Bee, *Picnic*, *Titanic: The Musical*, *The Music Man*, *The Wizard of Oz*, *Joseph and the Amazing Technicolor Dreamcoat*, Rose State College; *The Polar Express*, Rail Events/Warner Brothers; *The River City Players*, Tahlequah Playhouse. FILM: *Jurassic Games: Extinction*. TELEVISION: *Konnect HQ*.



Explore

THE CHICKASAW NATION

OKANA Resort and Indoor Waterpark

Oklahoma City, Oklahoma

This family-friendly resort will feature an 11-story, 404 room hotel, a 5-acre outdoor adventure lagoon, a family entertainment center, water park, multiple retail outlets, restaurants, a spa, a First American marketplace, amphitheater and conference center.



Chickasaw Cultural Center

Sulphur, Oklahoma

Visit the Chickasaw Cultural Center and share in Chickasaw culture, language and history. Experience dynamic performances, demonstrations, collections and exhibits at one of the most extensive tribal cultural centers in the United States.



McSwain Theatre

Ada, Oklahoma

The McSwain Theatre is a 560-seat former cinema, and present day theater and music venue. The McSwain Theatre is one of Oklahoma's premiere live entertainment venues, with performances featuring all types of music including country, rock, gospel, oldies and more!



Exhibit C Gallery

Oklahoma City, Oklahoma

Visitors will find a retail shop complete with hand-crafted Chickasaw jewelry, pottery, paintings and clothing. Other retail items include the full line of Bedré Fine Chocolate®, books from Chickasaw Press as well as Chickasaw Country-branded items.



Bedré Fine Chocolate®

Davis, Oklahoma

Today, the Chickasaw Nation is the only modern First American tribe to produce gourmet chocolate for your culinary pleasure. Bedré Fine Chocolate® creates gift-worthy premium chocolates for any occasion.



the
Chickasaw
Nation

BILL ANOATUBBY, GOVERNOR
CHICKASAW.NET @ X

Lyric Theatre Leadership

MICHAEL BARON⁺ (*Producing Artistic Director*) – AT LYRIC: He has directed, *Rodgers & Hammerstein's Oklahoma!*, *Joseph and the Amazing Technicolor Dreamcoat*, *Rodgers & Hammerstein's Cinderella* (Co-Direction with Dr. Brian Cheslik, Artistic Director of Deaf Austin Theatre), *King of Pangaea*, *Concerto* (world premiere), *The Prom*, *Carousel*, *Head Over Heels*, *Master Class*, *Grease*, *Lyric Kids' Clubhouse*, *Frost/Nixon*, *Titanic*, *Singin' in the Rain*, *Bright Star*, *When We're Gone* (world premiere), *Disney's Freaky Friday*, *Fun Home*, *Disney's When You Wish, I Am My Own Wife*, *Assassins*, *Fiddler on the Roof*, *Dreamgirls*, *Mann... And Wife* (world premiere), *Bernice Bobs Her Hair* (world premiere), *Big Fish*, *An Inspector Calls*, *A Little Night Music*, *Les Misérables*, *Triangle*, *Tarzan*, *The Glass Menagerie*, *The Mystery of Irma Vep*, *Call Me Madam*, *Spring Awakening*, *Ragtime*, *Oliver!*, *The Rocky Horror Show* and the annual production of Lyric's *A Christmas Carol* (also adapted). Baron has directed over 120 productions at theaters across the country, including *Tosca* (OKC Philharmonic) *Mendelssohn's Elijah* (Canterbury Voices) as well as co-directing with Sandra Mae Frank an ASL/Spoken English production of *The Music Man* at The Olney Theatre in Washington, D.C., and the current production of *A Christmas Carol* at Ford's Theatre in Washington, D.C. Other regional directing highlights include ZACH Theatre: *Peter and the Starcatcher*; Signature Theatre: *The Little Dog Laughed*; Adventure Theatre: *Big Nate* (world premiere); Goodspeed Musicals: *Meet John Doe*; Trinity Repertory Company: *The School for Scandal*; La Mama: *The Whore of Sheridan Square* (wrote and directed). NEA and Poetry Foundation 2010-2025: Poetry Out Loud National Competition Finals. Training: B.A. in Theatre Arts, Wake Forest University; M.F.A. in Directing, Trinity Repertory Conservatory. Michael served as the Associate Director of Signature Theatre (winner of the 2009 Regional Theatre Tony Award). Michael received the 2016 Oklahoma Governor's Arts Award, a 2016 special award from Oklahoma City Mayor's Committee on Disabilities Concerns, the 2021 Yad B'Yad, Award from the Jewish Federation of OKC and the 2016 and 2022 Helen Hayes Award for Outstanding Direction of a Musical. He is a member of the Rotary Club of Oklahoma City and an emeritus board member for the National Alliance for Musical Theatre.

JIM REYNOLDS (*Managing Director*) – is now in his ninth year at Lyric Theatre. As a career professional in nonprofit theatre management, he has extensive experience in marketing,

public relations, sales, project management, strategic planning, fundraising, and patron loyalty strategies. Prior to Oklahoma City, he was the Director of Marketing and Public Relations at ZACH Theatre – the leading regional theatre in Austin, TX. During his 25-year tenure he played an integral role in growing ZACH's annual budget from \$550,000 to \$8,000,000 and opening two state-of-the-art theatre facilities. Prior to that, he was the Sales Director at Dallas Theater Center, helmed by Adrian Hall and Peter Donnelly – both acclaimed leaders in the first and second generation of the American regional theater movement. Fresh from the University of South Carolina, he served as Patron Manager and Production Business Manager at the Alliance Theatre/Atlanta Children's Theatre, the Southeast's leading regional theatre and Tony Award-Winner. Jim has served as a civic volunteer with several non-profit organizations and served as the Board President of the Plaza District Business Association in 2021.

ASHLEY WELLS⁺ (*Executive Producer*) – celebrates 23 years with Lyric Theatre of Oklahoma and was recently honored as the recipient of the Arts in Education Governor's Arts Award. She is on the Board of the National Alliance for Musical Theatre and Chairs the Membership Committee. AT LYRIC: Directing credits include: *Beehive-The 60's Musical*, *Beautiful: The Carole King Musical*, *Waitress*, *The Play That Goes Wrong*, *Kinky Boots*, *Matilda*, *Disney's Newsies*, *Hello, Dolly!*, *Rock of Ages*, *The Wizard of Oz*, *The Fantasticks* (Director/Choreographer), *Billy Elliot*, *Pageant*, *Monty Python's Spamalot*, *Triangle: A New Musical* (Associate Director), *The Odd Couple, B*, *Tarzan* (Choreographer), *Sweet Charity* with Tony Award-winner Billy Porter. Choreography credits include: *Spring Awakening*, *Lyric's A Christmas Carol*, *Oliver!*, *The Rocky Horror Show*, *Jesus Christ Superstar*, *Rodger & Hammerstein's Oklahoma!* (Co-Choreographer), *Hello, Dolly!*, *Cabaret* (Choreographer/Ensemble), *Chicago* (Choreographer/Merry Murderess). REGIONAL THEATRE credits include: *Waitress*, Dallas Theatre Center (Director); *The Play That Goes Wrong*, Oklahoma City University (Director); *Phantom of the Opera*, North Shore Music Theatre (Ensemble); *Evita* (Ensemble), *Brigadoon* (Jean); *The Music Man*, Music Theatre of Wichita (Zaneeta Shin); *La Cage Aux Folles*, Casa Mañana (Anne). BROADWAY AND NATIONAL TOUR: *Hello, Dolly!* with Tony Award Winner Carol Channing.

2026 Summer Artistic Staff

MICHAEL BARON⁺ (ANNIE & SWEENEY TODD: *Director*)
– Full Bio on Leadership page 36.

ASHLEY WELLS⁺ (SISTER ACT: *Director*) – Full Bio on Leadership page 36.

JAKE JOHNSON (ANNIE: *Music Director*; SISTER ACT: *Pit Pianist*; SWEENEY TODD: *Choral Director*) – A native of Holdenville, Oklahoma, Jake Johnson serves as the Associate Dean of the Wanda L. Bass School of Music at Oklahoma City University. Jake is sought-after as a pianist, vocal coach, and musical director and has worked on creative teams for Lyric Theatre productions since 2007. He is also the author of several books on American music, including most recently *Unstaged Grief: Musicals and Mourning in Midcentury America* (University of Illinois Press) and *Harline and Washington's When You Wish Upon a Star* (Oxford University Press).

MICHAEL D. CHILDS (SISTER ACT: *Music Director*) a multi-hyphenate theatre artist and educator whose passion for storytelling through music, movement, and voice has taken him across the United States. A proud graduate of the KD Conservatory of Film and Dramatic Arts (Musical Theatre 2015), Michael has built a vibrant career as a director, music director, choreographer, actor, and educator. His music direction credits include *Company* at the University of Oklahoma; *Lyric's A Christmas Carol* and *Mother Road* at Lyric Theatre of Oklahoma. Since 2025, Michael has served as the Music Director for the Kelli O'Hara High School Musical Theatre Awards. Michael currently teaches Voice at the Weitzenhoffer

School of Musical Theatre at the University of Oklahoma. Deeply committed to arts accessibility and cultural outreach, he is also an active teaching and performance artist with the Dallas Community Arts Program, offering free Broadway-inspired singing, acting, and dance workshops to underserved communities.

JAN MCDANIEL (SWEENEY TODD: *Music Director*) – AT LYRIC: *West Side Story, Freaky Friday, Master Class, Disney's Newsies*. Guest Conductor/Consultant with the Oklahoma City Philharmonic and has led performances with Kelli O'Hara, Hugh Panaro, Scarlett Strallen, and Dee Roscioli. He has served as musical director for dozens of productions at the Bass School of Music at Oklahoma City University: *Lucia di Lammermoor, La rondine, Suor Angelica, Don Giovanni, La traviata, The Ballad of Baby Doe, Lucia di Lammermoor, L'elisir d'amore, Don Pasquale, Die lustigen Weiber von Windsor, Susannah, Seussical, The Most Happy Fella, Evita, Anything Goes, Crazy for You, Of Thee I Sing*. McDaniel is also the founding Musical Director of Painted Sky Opera and has led these productions: *Rigoletto, La traviata, Carmen, Don Giovanni, Three Decembers, Amahl and the Night Visitors, The Medium, La Bohème, Tosca, Madama Butterfly*, and many others. As a pianist, he appears frequently with Kristin Chenoweth and Kelli O'Hara.

MATTHEW SIPRESS (ANNIE: *Choreographer*)
DIRECTOR/CHOREOGRAPHER: *Curious George, The Cat in the Hat, Lyric Theatre of Oklahoma; Cabaret, Sweeney Todd, Reduxion Theatre; Disaster!, The Producers, Pollard Theatre, Hello, Dolly!, Sooner Theatre; A Funny*

+ Member Stage Directors and Choreographers Society Continued on page 39...

SHOW BIZ DANCEWEAR

4427 NW 63rd St, OKC, OK 73116
405-840-4406

SHOWBIZDANCEWEARABOUTIQUE.COM



Trained Pros to keep you on your toes with the best in bodywear and shoes!

Sage | Sotheby's
INTERNATIONAL REALTY

Discover *the Unique*



For those who seek an exceptional **home & life.**



BRITTA MCAFEE THRIFT, JD
Global Real Estate Advisor
405.821.2313 | brittathrift.sagesir.com

2026 Summer Artistic Staff

Thing Happened on the Way to the Forum, Jewel Box Theatre. DIRECTOR: *It's A Wonderful Life: A Live Radio Play* (2016/2025), *Miss Bennett: A Christmas at Pemberly*, *A Little Night Music*, *Così Fan Tutte*, Oklahoma City University; *Jerry's Girls*, Jewish Theatre of Oklahoma. PERFORMANCE CREDITS: *Jersey Boys*, *Billy Elliot*, *Sweet Charity*, *A Chorus Line*, *42nd Street*, *Joseph and the Amazing Technicolor Dreamcoat*, *Urinetown*, *Fiddler on the Roof* (1991 & 2016), Lyric Theatre of Oklahoma. BROADWAY/NYC/NATIONAL TOUR: *Hello, Dolly!* (1995 Revival with Carol Channing), *Evita*, *Radio City Music Hall Christmas Spectacular*. OTHER CREDITS: B.S. IN Entertainment Business Oklahoma City University.

HUI CHA POOS (SISTER ACT: *Choreographer*) – is an internationally recognized dancer, choreographer, and producer whose work spans stage, screen, and classroom, and bridges Hip Hop, Jazz, Contemporary, and Music Theatre. Beginning her career with OKC's Lyric Theatre, Hui has since performed and choreographed extensively for Lyric Theatre of Oklahoma as well as The Pollard, Southern Plains, UCO, OCU, and OKC Rep. She is the founder of RACE Dance Collective, where she created original works including the Hip Hop Nutcracker and Racey Shows. Hui is on faculty at the University of Central Oklahoma, where she also leads the Dance Education Department, and is an adjunct instructor of Jazz at the University of Oklahoma Weitzenhoffer School of Musical Theatre. She is proud to be a founding advisor for the Choreographers Guild.

ASHLYN ADAMS (ANNIE: *Assistant Choreographer*; SWEENEY TODD: *Choreographer*) – is a choreographer, performer, and dance educator who specializes in jazz, tap, and musical theatre dance. Originally from the Seattle, Washington area, Ashlyn performed in regional Musical Theatre productions throughout the Pacific Northwest and was a founding member of New Vision Dance Company. Ashlyn holds a B.P.A in Dance Performance from Oklahoma City University and teaches and choreographs around the region, particularly at Lyric Theatre of Oklahoma, Lyric's Thelma Gaylord Academy, and at Range of Motion Dance Studio where she teaches upper levels of jazz and tap and co-directs their Professional Focus Training Program. AT LYRIC: *Joseph and the Amazing Technicolor Dreamcoat* (Children's Choreographer), *King of Pangea* (Choreographer), Lyric's *A Christmas Carol* (Associate Choreographer, 2023-2025). LYRIC ACADEMY HIGHLIGHTS: *Hadestown*, *Footloose*, *Zombie Prom*, *Mean Girls*, *Xanadu Jr.*, *Shrek*, and the award-winning performances at the Junior Theater Festival 2024-2026, and at the National Performing Arts Festival 2023.

SHAWN IRISH[^] (ANNIE: *Scenic Designer*) – AT LYRIC: *Beehive-The 60's Musical*, *Bright Star*, *Distant Thunder* (World Premiere). Recent selected work: *Primary Trust*, *What the Constitution Means to Me*, *Stones in his Pockets*, *The Mountaintop*, *Marie and Rosetta*, *Shakespeare in Love*, *Once*, *Fun Home*, TheatreSquared; *Mamma Mia*, Skylight Music Theatre; *The Lion in Winter*, freeFall Theatre Company; *Oil*, *Nickel and Dimed*, Swine Palace; *1776*, *Meet Me in St. Louis*, *Gypsy*, Ocean State Theatre; *A Streetcar Named Desire*, *House and Garden*, *I Love You Because*, Playhouse Theatre; *Noises Off*, *The Man Who Came To Dinner*, *The Music Man*, Arrowrock Lyceum;

Arthur Miller's The Price, Northern Stage. His Lighting Design for Charles Mee's *Big Love* was featured at the Prague Quadrennial and in American Theatre magazine. He is a Professor of Theatre and serves as Head of Design & Technology at the University of Arkansas.

ADAM KOCH[^] (SISTER ACT: *Scenic Designer*): AT LYRIC: Lyric's *A Christmas Carol*, *Triangle*, *Disney's When You Wish, Bye Bye Birdie*, *Big Fish*, *Dreamgirls*, *Tarzan*, *Sweet Charity*. BROADWAY: *A Wonderful World: The Louis Armstrong Musical*. INTERNATIONAL: *Dreamgirls*, *Sister Act* (Seoul); *Pretty Woman*, *Mean Girls* (São Paulo). REGIONAL: Hundreds of productions, with multiple awards and nominations, including Suzi Bass award for 'Outstanding Scenic Design' for the submersive outdoor production of *Titanic* (Atlanta), 'Outstanding Scenic Design' Carbonell Award for *A Wonderful World* (Miami New Drama), as well as Helen Hayes Award nominations for both *Kiss of the Spiderwoman* (Signature Theatre), *Bat Boy* (1st Stage). EDUCATION: Carnegie Mellon University.

KIMBERLY POWERS[^] (SWEENEY TODD: *Scenic Designer*) AT LYRIC: *Beautiful: The Carole King Musical*, *Waitress*, *The Play That Goes Wrong*, *Matilda*, *Carousel*, *Grease*, *Denise Lee: Pressure Makes Diamonds*, *Nunsense*, *Newsies*, *Titanic: The Musical*, *Hello, Dolly!*, *Mamma Mia*, *West Side Story*, *A Christmas Carol*, *Fiddler on the Roof*, *An Inspector Calls*, *Billy Elliot*. REGIONAL: Opera Theatre St. Louis (MO), TheatreSquared (AR), Portland Stage (ME), Arkansas Repertory Theatre (AR), Riverside Theatre (FL), City Theatre (PA), Santa Fe Playhouse (NM), Colorado Springs Fine Arts Center (CO), Florida Repertory Theatre (FL), Dallas Theater Center (TX), Virginia Repertory Theatre (VA), Stages (TX), Southern Rep (LA), Casa Mañana (TX), Northern Stage (VT). ADDITIONAL CREDITS: Freelance Exhibit/Event Designer and Scenic Artist since 2006; Resident Set Designer, Ocean State Theatre Company (2012-13), Ohio Light Opera (2008-2013); First Design Assistant, Denver Center Theatre Company (2006-2008); Freelance Scenic Artist since 2001.

COURTNEY STRONG (ANNIE, SISTER ACT, SWEENEY TODD: *Properties Designer*) – 20 years with Lyric Theatre of Oklahoma. AT LYRIC: *Beautiful: The Carole King Musical*, *Jersey Boys*, *Mary Poppins*, *Ain't Misbehavin'*, *The Prom*, *The Sound of Music*, *Kinky Boots*, *Carousel*, *Matilda*, *Head Over Heels*, *Distant Thunder*, *Rock of Ages*, *Disney's When You Wish, Million Dollar Quartet*, *Billy Elliot*, *Big Fish*, *Mary Poppins*, *Oklahoma!*, *A Little Night Music*, *Monty Python's Spamalot*, *Disney's The Little Mermaid*, *Les Misérables*, *Tarzan*, *Big River*, *The Glass Menagerie*, *Call Me Madam*, *Sweet Charity*, *Ragtime*, *Oliver!*, *Steel Magnolias*, *The Rocky Horror Show*, *Urinetown: The Musical*. OTHER THEATRE: *The Christmas Show*, Oklahoma City Philharmonic; *The Secret Garden*, Myriad Botanical Gardens.

JEFFREY MEEK (ANNIE & SWEENEY TODD: *Costume Designer*; SISTER ACT: *Costume Coordinator*) – 27th season and over 150 productions with Lyric Theatre of Oklahoma, 8 World Premiers. REGIONAL: Ohio Light Opera: Over 50 productions, 5 World Premiers; Evan Bernardin Productions: *Merry Christmas Charlie Brown* (National Tour-2022-2024); Gershwin Productions: *America Girl LIVE* (National Tour), *A Charlie Brown Christmas in Concert* with The Portland Symphony; ZACH Theatre: *Cinderella*, *The Prom*; Tulsa Opera: 2003/2004

2026 Summer Artistic Staff

Seasons; Casa Mañana Playhouse: *Annie*, *Disney's High School Musical*, *A Christmas Carol - The Musical*; Stage One: *I Do, I Do, Are We There Yet?* (World Premiere), *Swing*; Eastman School of Music (3 Seasons); Adventure Theatre: *James and the Giant Peach* (Helen Hayes Nomination), *Big River*. LOCAL: OKC Philharmonic: 15 years of A Very Merry Pops; Reduxion Theatre: 7 Seasons; Carpenter Square Theatre, Oklahoma Children's Theatre, Jewel Box Theatre. FILM: *Fingerprints*, *Pearl*, *Agenda*.

J M WEAVER (ANNIE, SISTER ACT, SWEENEY TODD: *Hair/Make-Up Designer*) – her career began in 1991 with Washington National Opera at the Kennedy Center. Weaver has designed for many companies throughout the US. She has been with LYRIC since 2016: *Beehive-The 60's Musical*, *Lyric's A Christmas Carol*, *Jersey Boys*, *Rodgers & Hammerstein's Cinderella*, *Ain't Misbehavin*, *The Prom*, *Kinky Boots*, *Rodgers & Hammerstein's Carousel*, *Matilda*, *Titanic*, *Singin' in the Rain*, *Hello, Dolly!*. BROADWAY: *The Notebook* (Co-Designer with Oscar Winner Mia Neal). OPERA: *The Life and Times of Malcolm*, *Central Park 5* and *Handmaids Tale* with Detroit Opera.

HELENA KUUKKA (ANNIE, SISTER ACT, SWEENEY TODD: *Lighting Designer*) – AT LYRIC: *Rodgers & Hammerstein's Oklahoma!*, *Beautiful: The Carole King Musical*, *Jersey Boys*, *The Prom*, *Rodgers & Hammerstein's The Sound of Music*, *Rodgers & Hammerstein's Carousel*, *Kinky Boots*, *Ragtime*, *Mamma Mia*, *When We're Gone*, *Aida*, *Call Me Madam*, *Dream Girls*, *Titanic*, *Disney's Newsies*, *Hello, Dolly*, *Disney's Tarzan*, *West Side Story*, *Disney's When You Wish*, *Ragtime*. REGIONAL THEATRE: DANCE: *Dracula*,

Swan Lake, Ballet Memphis; *Into the Woods*, *Tosca*, Tulsa Opera; 9 to 5, *Something Rotten*, Music Theatre Wichita; *A Christmas Carol*, Ensemble Theatre Company; *Cavalleria Rusticana*, *Eugene Onegin*, *Barber of Seville*, *Zorro*, *An American Dream*, Opera Santa Barbara; *Aida*, Vancouver Opera; *Eugene Onegin*, Florida Grand Opera; *Firebird*, *Vampire's Ball*, *Giselle*, Orlando Ballet; *Dracula*, Zach Theatre. OTHER THEATRE: The Fort Lauderdale Christmas Pageant. ADDITIONAL CREDITS: Director of Production at Opera Santa Barbara; M.F.A. in Stage Design from Southern Methodist University.

JACOB HENRY (ANNIE, SISTER ACT, SWEENEY TODD: *Sound Designer*) – Associate Professor of Sound Design, Oklahoma City University. B.A. in Theatre from Texas A&M University/Corpus Christi. M.F.A. from Texas Tech University. Featured at the 2019 Prague Quadrennial, Samuel French's OOB Festival, and the Kennedy Center American College Theatre Festival where Henry was a fellow and National Finalist for the Excellence in Sound Design Award. Recipient of the KCACTF Region 6 Barbizon Award for Excellence in Sound Design, the Region 6 Award for Excellence in Composition and Arrangement, and the BroadwayWorld Oklahoma Award for Best Sound Design. AT LYRIC THEATRE: *Beehive-The 60's Musical*, *Lyric's A Christmas Carol*, *The Rocky Horror Show*, *Rodgers & Hammerstein's Oklahoma!*, *Beautiful: The Carole King Musical*, *Joseph and the Amazing Technicolor Dreamcoat*, *Waitress*, *Mother Road*. Recent credits locally: *Our Town*, *Instructions for a Séance*, *The Thanksgiving Play*, *White Christmas*, and *Government Inspector*.

Continued on page 41...



ANNOUNCING THE

26-27 SEASON

Nine Great Productions on the OU Campus!

FALL SHOWS

THE PAJAMA GAME

September 25-27

ARCADIA

October 9-18

OKLAHOMA FESTIVAL BALLET

November 6-8

DIE FLEDERMAUS

December 3-6

SPRING SHOWS

YOUNG CHOREOGRAPHERS' SHOWCASE

January 29-31

URINETOWN

February 12-21

IL RE PASTORE

March 4-7

CONTEMPORARY DANCE OKLAHOMA

April 2-4

THE TEMPEST

April 23-May 2

For ticket alerts and more information, visit THEATRE.OU.EDU



2026 Summer Artistic Staff

KRIS KUSS (ANNIE, SISTER ACT, SWEENEY TODD: *Fight/Intimacy Coordinator*) – is a director, fight director, actor, stage combat instructor, and educator based in OKC. He has his M.F.A. in Directing from the University of Southern Mississippi. He is Associate Professor of Movement at O.C.U. and a Recognized Full Instructor with Dueling Arts International. AT LYRIC: *Waitress, The Play That Goes Wrong, Jersey Boys, The Sound of Music, Newsies*; Oklahoma City University: *King Lear, Legacy of Light, Mother Road, Dracula: a Feminist Revenge Fantasy, Romeo & Juliet, She Kills Monsters, The Play That Goes Wrong; Oklahoma Shakespeare: Hamlet, Macbeth*; OKCRep: *The Thanksgiving Play, Vietgone*; Painted Sky Opera: *Pagliacci, The Tragedy of Carmen*; Emerald Coast Theatre Co: *Treasure Island*.

SHANNON RICHEY* (SISTER ACT & SWEENEY TODD: *Production Stage Manager*) – AT LYRIC: *Rodgers & Hammerstein's Oklahoma!, Joseph and the Amazing Technicolor Dreamcoat, Rodgers & Hammerstein's Cinderella, Jersey Boys, Mary Poppins*. REGIONAL THEATRE: *Let Me Down Easy, A.R.T./Harvard and ZACH Theatre; Cinderella, The Inheritance, Mothers and Sons, One Man Two Guvnors, The Who's Tommy, Jennifer Holliday in Concert, Cabaret, Love! Valour! Compassion!, The Laramie Project, Jelly's Last Jam, Jouët, Tapestry, Pride's Crossing, The Santaland Diaries, The Rocky Horror Show, The Mystery of Irma Vep, ZACH Theatre*. *Rodgers & Hammerstein's Carousel, Music Man, Big River, TexArts*. OTHER THEATRE: As You Like It, *HAIR*, Texas State University; *The Soul to Sole Festival, Visions of Rhythm, Of Mice and Music, Tapestry Dance Company; City of Angels, St. Edward's University; Love's Labour's Lost, The Tempest, THE DREAM: A Midsummer Night's Dream, Sunday In The Park with George, Pride and Prejudice, Austin Shakespeare*. NATIONAL TOURS: *The Foreigner, Greater Tuna*.

JEFFERY SCOTT COCHRAN* (ANNIE: *Production Stage Manager*) – 15 years with Lyric Theatre of Oklahoma. AT LYRIC: Production Stage Manager for *Beautiful: The Carole King Musical, Jersey Boys, The Prom, Bye Bye Birdie, Sweet Charity, Call Me Madam, Disney's Tarzan, The King & I, Les Misérables, Disney's The Little Mermaid, Rock of Ages, Lyric's A Christmas Carol* (2013-2016 & 2023-2025), *Xanadu*; Stage Management Mentor on Lyric Theatre Plaza Productions 2012-2025; REGIONAL THEATRE: Oklahoma City Ballet Production Stage Manager for *Nine Sinatra Songs*; WaterTower Theatre Resident Production Stage Manager 1996-99. Dallas Black Dance Theater's *Miles Davis' Porgy and Bess*; Currently the Head of Stage, Event and Production Management at Texas Christian University and the former Head of Stage and Production Management at Oklahoma City University.

THOMAS MEEHAN (ANNIE: *Book*) received the Tony Award for co-writing the book for *The Producers* in 2001 and in 2003 for co-writing the book for *Hairspray*. He received his first Tony Award in 1977 for writing the book of *Annie*, which was his first Broadway show, and has written the books for the musicals *Rocky, Elf the Musical, Cry-Baby, Young Frankenstein, Chaplin, Bombay Dreams, I Remember Mama, Ain't Broadway Grand* and *Annie Warbucks*. In addition, he was a long-time contributor of humor to *The New Yorker*, an Emmy-Award winning writer of television comedy, and a collaborator on a

number of screenplays, including Mel Brooks' *Spaceballs* and *To Be Or Not To Be*. Mr. Meehan was also a member of the Council of the Dramatists Guild. He and his wife, Carolyn, divided their time between a home in Nantucket and an apartment in Greenwich Village, near which, on Hudson Street, she owned and presided over the long-running and near-legendary children's store Peanut Butter & Jane.

CHARLES STROUSE (ANNIE: *Music*) A long-standing member of the Songwriters Hall of Fame, and in January 2002, an inductee into The Theater Hall of Fame, Charles Strouse's first Broadway musical, *BYE BYE BIRDIE* (1960), won him a Tony® Award and the London Critics Best Foreign Musical Award. In 1970, *APPLAUSE*, starring Lauren Bacall, achieved the same honors and his smash hit, *ANNIE* (1977), also won a Tony® for Best Score as well as two Grammy Awards®. Some of his other musicals include *ALL AMERICAN, GOLDEN BOY* (starring Sammy Davis Jr.), *IT'S A BIRD, IT'S A PLANE, IT'S SUPERMAN, I AND ALBERT*, directed in London by John Schlesinger, and *DANCE A LITTLE CLOSER*, written with Alan Jay Lerner. *CHARLIE & ALGERNON* won a 1981 Tony® nomination for Best Score, as did *RAGS* in 1987 and *NICK AND NORA* in 1992. He wrote both the music and lyrics for off-Broadway's *MAYOR*, and teamed again with Martin Charnin to create *ANNIE WARBUCKS*, the sequel to *ANNIE*. His film scores include *BONNIE & CLYDE, THE NIGHT THEY RAIDED MINSKY'S*, and *ALL DOGS GO TO HEAVEN*. "Those Were The Days," the theme song for TV's *ALL IN THE FAMILY* is a Strouse song, with lyrics by his most frequent collaborator, Lee Adams. "Born Too Late", a 1958 pop song written with Fred Tobias, was a top-10 BILLBOARD chart hit and is still heard on many oldies stations. The quadruple platinum album title song by Jay-Z, "Hard Knock Life (Ghetto Anthem)", won the 1999 Grammy for the best Rap album, charted for more than a year and won the BILLBOARD 1998 R&B Album of the Year Award. Strouse's far-ranging talents include chamber and orchestral works, a piano concerto, a two-piano sonata, and operas. His latest choral work, "The Child In Us All", premiered in Spring, 2000. *NIGHTINGALE*, an opera based on the Hans Christian Andersen story for which he wrote music, book and lyrics, was recorded by Sarah Brightman. Strouse was commissioned in 2001 to write *CONCERTO AMERICA* for the pianist Jeffrey Biegel. The work premiered in June 2002 with the Boston Pops at Symphony Hall. Charles Strouse created the ASCAP Musical Theatre Workshop in New York, where he encouraged the talents of countless young composers, writers and performers. In 1999, Strouse received the ASCAP Foundation Richard Rodgers Award for Career Lifetime Achievement in Musical Theatre. In December, 1995, a tv reinterpretation of the classic *BYE BYE BIRDIE* (starring Jason Alexander and pop-star Vanessa Williams) aired on ABC-TV. The 1995/96 Emmy for Outstanding Individual Achievement in Music and Lyrics was given to the new song written for and performed by Vanessa Williams, "Let's Settle Down". Another TV interpretation in 1999, *ANNIE*, aired on ABC's Wonderful World of Disney, swept the ratings by winning over 40 million viewers, won the 1999 Peabody Award and 2 Emmy Awards. The show starred Kathy Bates, Audra McDonald, Alan Cumming, Kristin Chenoweth, Victor Garber, Andrea McArdle and Alicia Morton as Annie and ranked #1 as movie of the year. A revised *GOLDEN BOY* was produced

2026 Summer Artistic Staff

by the Long Wharf Theatre in New Haven (November, 2000); and the *ENCORES!* Series presented the show in March, 2002. Future projects: *GOLDEN BOY* will be performed at the Greenwich Theatre in England in June, 2003. *THE NIGHT THEY RAIDED MINSKY'S*, which Charles Strouse originally scored for film, was adapted into a full-length musical with a book by Michael Okrent and Evan Hunter, lyrics by Susan Birkenhead. An adaptation of the Paddy Chayevsky film *MARTY*, had a successful regional theatre run at Huntington Theatre in Boston in September, 2002, reuniting Strouse with Lee Adams as lyricist; the book is by Rupert Holmes. Charles Strouse passed away on May 15, 2025.

MARTIN CHARNIN (*ANNIE: Lyrics*) created the role of *Big Deal* in the original Broadway company of *West Side Story* in 1957, the only acting job he ever had. He began writing during *West Side Story* and his first collaborator was Mary Rodgers. He was subsequently the director, lyricist, composer, librettist, producer or a combination of the aforementioned, for over 140 theatrical productions, including *Annie*, *Annie Warbucks*, the Rock Opera version of *Joan of Arc*, *Mata Hari*, *Loose Lips*, *Star-Crossed*, *Sid Caesar and Company*, *Carnal Knowledge*, *In Persons* starring Eli Wallach and Anne Jackson, *The Flowering Peach*, *Winchell*, the revised *Can Can* by Cole Porter (for which he wrote a new libretto), *Cafe Crown*, *Mike*, *Laughing Matters*, *The No Frills Revue*, *The First*, *On the Swing Shift*, *A Little Family Business*, *Upstairs at O'Neals*, *The National Lampoon Show*, *Lena*

Horne on Broadway, *I Remember Mama*, *Hot Spot*, *Zenda*, *Put It In Writing*, *Fallout*, *Kaleidoscope*, *Ballad For A Firing Squad*, *La Strada*, *Nash at Nine*, *Music Music*, *Two by Two*, *And in London*, *Bar Mitzvah Boy*, *Bless the Bride*, *The 9 1/2 Quid Revue*, and internationally and regionally, 17 productions of *Annie*. In the 60's and 70's he turned to Television and created 7 specials that garnered over 15 Emmy Awards, and the Peabody Award for Broadcasting. His collaborators included Peter Allen, Harold Arlen, Vernon Duke, Keith Levenson, Michael Danziker, Peter Sipos, Mary Rodgers, Marvin Hamlisch, Richard Rodgers, and Charles Strouse. He wrote for and directed among others, Fred Astaire, Jack Lemmon, Anne Bancroft, Lena Horne, Danny Kaye, Angela Lansbury, Johnny Mathis, Bill Murray, Jon Stewart, Bebe Neuwirth, Bernadette Peters, Sarah Jessica Parker, Gilda Radner, Molly Ringwald, Chita Rivera, Lou Reed, Susan Sarandon, Tim Robbins, Joan Rivers, Chuck D., Phoebe Snow, Shirley MacLaine, Marlo Thomas, Julianne Moore, Martha Plimpton, and Barbra Streisand. Charnin was the artistic director of *Seattle's Showtunes* for 7 years, before moving back to New York for the 4th incarnation of *Annie* on Broadway. He also created a one woman theatrical entertainment for his wife, Broadway and television star Shelly Burch.

ALAN MENKEN (*SISTER ACT: Music*) Theater: *God Bless You Mr Rosewater*, *Little Shop Of Horrors*, *Real Life Funnies*, *Atina: Evil Queen Of The Galaxy*, *Kicks*, *The Apprenticeship Of Duddy Kravitz*, *Beauty And The Beast*, *A Christmas Carol*, *Weird Romance*, *King David*, *Der Glöckner Von*

Continued on page 43...



The **American Fidelity Foundation** and **Cameron Family of Companies** proudly support Lyric Theatre and their mission to promote collaboration among the arts in our community and enrich the quality of life for the people of Oklahoma.

American Fidelity Foundation
a different opinion



foundation.americanfidelity.com

AF-5743-0326 AMERICAN FIDELITY ASSURANCE COMPANY

**DONOR RECEPTION
CATERING SPONSOR**



www.kamskookery.com

2026 Summer Artistic Staff

Notre Dame, The Little Mermaid, Sister Act, Leap Of Faith, Aladdin and Newsies. Film: Little Shop Of Horrors, The Little Mermaid, Beauty And The Beast, Newsies, Aladdin, Pocahontas, The Hunchback Of Notre Dame, Hercules, Life With Mikey, Lincoln, Home On The Range, Noel, Enchanted, Shaggy Dog, Tangled and Mirror Mirror. Songs: Rocky V, Home Alone 2 and Captain America. Awards: 8 Oscars (19 nominations), 11 Grammys (including Song of the Year), 7 Golden Globes, Tony® (plus 4 nominations), Drama Desk, Outer Critics Circle, New York Drama Critics, Olivier and London's Evening Standard Award, Drama League. Honors: Songwriter's Hall of Fame, Doctorates from New York University and University of North Carolina School of the Arts.

GLENN SLATER (SISTER ACT: *Lyrics*) co-created Disney's 2010 worldwide smash *Tangled* (2011 Grammy Winner, 2010 Oscar and Golden Globe nominee), as well as the Broadway and international hit musicals *Sister Act* (2011 Tony nominee for Best Score) and *The Little Mermaid* (2008 Tony nominee for Best Score, Grammy nominee for Best Cast Album), and, most recently *School of Rock* (2015). With longtime collaborator Alan Menken, he is Executive Producer and Lyricist for the ABC-TV musical comedy series *Galavant*, and has also written songs for the Disney animated film *Home On The Range* (2004) and the Broadway musical *Leap of Faith* (Tony nominee-Best Musical, 2012). In the West End, Glenn provided both book and lyrics for Andrew Lloyd Webber's *Love Never Dies* (2010 Olivier nominee-Best Musical), the sequel to *Phantom of the Opera*. Other work includes an Emmy-nominated song for the ABC-TV comedy *The Neighbors* (2013), and the stage revue *New Yorkers at The Manhattan Theatre Club* (Lucille Lortel, Drama Desk, Outer Critics Circle nominations). Glenn is the recipient of the prestigious Kleban Award for Lyrics, the ASCAP/Richard Rogers New Horizons Award, and the Jonathan Larson Award. He is an alumnus of the BMI Musical Theatre Workshop, and a member of both ASCAP and the Dramatists' Guild.

CHERI STEINKELLNER (SISTER ACT: *Book*) has won four Emmy Awards, two Golden Globes, The People's Choice, BAFTA, Writers Guild Award, Parents Choice and TV-Land Legend Awards, for writing and producing *Cheers* (recently named one of the Top 10 Best Written Comedies in TV history), and *The Jeffersons, Facts of Life, Family Ties* and *Who's The Boss*, and for creating the acclaimed Disney animated Saturday morning TV series and feature film, *Teachers Pet*. A 2011 Tony-nominee for *Sister Act* (with husband Bill Steinkellner, Alan Menken and Glenn Slater); Cheri has also written *Princesses* (with Bill, David Zippel and Matthew Wilder); and book and lyrics for *Mosaic* (with Georgia Stitt), and *Jailbirds* on Broadway (with Bill and Jeff Rizzo). Other stage includes *Our Place*, and *Instaplay* - L.A.'s original and longest-running, improvised, musical-comedy. An Indy Award winner and Ovation nominee for *Hello! My Baby*, Cheri currently teaches writing at Stanford and UCSB and directs youth theatre in beautiful Santa Barbara, where she and Bill raised their three favorite children/writers/artists: Kit, Teddy, and Emma.

BILL STEINKELLNER (SISTER ACT: *Book*) Award-winning television and screen writer: "*Cheers*" and Disney's "*Teacher's Pet*" (Emmys, Golden Globes, BAFTAS, Writers

Guild and People's Choice Awards). Book writer (with wife, Cheri): *Sister Act the Musical* (London Palladium, Hamburg, Broadway 2011), *Princesses* (Goodspeed, 5th Avenue). Writer/director (with Paul Reubens): the original *Pee-wee Herman Show* (Groundlings, Roxy Theatre, HBO). Creator/director: *Instaplay*, L.A.'s first all-improvised musical-comedy. Author: the L.A. Times bestseller *Postcards From the Moon*.

DOUGLAS CARTER BEANE (SISTER ACT: *Additional Book Material*) Beane's play "*The Nance*" opened on Broadway starring Nathan Lane, where it received five Tony nominations and won three. It was filmed for PBS "*Live from Lincoln Center*" and was shown in movie theaters and then broadcast on PBS. Beane's previous play "*The Little Dog Laughed*" opened on Broadway where it was nominated for the Tony Award for Best Play and won a Tony award for *Julie White*. It then opened in the West End at the Garrick Theater where it starred Tamsin Grieg and Rupert Friend and Gemma Arterton and was nominated for the Olivier for Best New Play. His other plays include "*Fairycakes*" starring Mo Rocca, Jackie Hoffman, Ann Harada, and Julie Halston, "*Shows for Days*" featuring Patti Lupone and Michael Urie, "*The Country Club*" starring Cynthia Nixon and Amy Sedaris, "*Mr. & Mrs. Fitch*" which starred John Lithgow and Jennifer Ehle, "*Music From a Sparkling Planet*" and "*As Bees in Honey Drown*" which won the Outer Critics Circle John Gassner Award and an Obie award for its star, J. Smith Cameron. His first play "*Advice From A Caterpillar*" was nominated for an Outer Critics Circle award and was made into a film starring Cynthia Nixon and Timothy Oliphant. It received the Aspen Comedy Festival Best Feature award. He wrote the film, "*To Wong Foo, Thanks for Everything, Julie Newmar*" which starred Patrick Swayze, John Leguizamo, Wesley Snipes, Robin Williams and Stockard Channing. A respected practitioner of musical theater his adaptation of "*Rodgers + Hammerstein's Cinderella*" ran on Broadway for two years and was also nominated for Tonys for both Best Book of a Musical and Best Musical Revival. His musical stage version of the film "*Xanadu*" also ran on Broadway for two years and was nominated for a Tony for Best Book of a Musical and Best Musical. It received the Drama Desk Award for best book of a musical and the Outer Critics Circle Best Musical award. Beane's new book for the musical "*Sister Act*" ran on Broadway for two years and was nominated for the Tony for Best Book of a Musical and Best Musical. It opened in London this summer with Jennifer Saunders as Mother Superior. He wrote the book for the Broadway musical, "*Lysistrata Jones*" and received both the Drama Desk and Tony nomination for Best Book of a musical. He wrote the book to the stage adaptation of MGM's "*The Bandwagon*" which was produced at the Old Globe and Encores and he's written the summer show for the Rockettes and Radio City Music Hall. His libretto for "*Die Fledermaus*" debuted at the Metropolitan Opera and is in their repertoire. He is married to composer Lewis Flinn and they have two children Cooper and Gabrielle who like theater but don't want to do it.

HUGH WHEELER (SWEENEY TODD: *Book*) was a novelist, playwright and screen writer. He wrote more than thirty mystery novels under the pseudonyms Q. Patrick and Patrick Quentin, and four of his novels were transformed into films: *Black Widow, Man in the Net, The*

A SEASON COMPOSED FOR YOU

CLASSICS

SATURDAYS AT 7:30PM | CIVIC CENTER MUSIC HALL

**AMERICA THE BEAUTIFUL:
A 250 CELEBRATION**
SEPTEMBER 19, 2026

WORLDS OF WONDER
OCTOBER 10, 2026

**SYMPHONIC STORIES:
FROM BLUES TO BROADWAY**
NOVEMBER 21, 2026

**FAIRYTALES:
STORIES IN SOUND**
JANUARY 9, 2027

FATE, FIRE & FANTASY
FEBRUARY 6, 2027

ENIGMAS OF LIFE
MARCH 13, 2027

A NIGHT IN VIENNA
APRIL 10, 2027

**VOICES OF TRIUMPH:
SYMPHONIC MASTERPIECES**
MAY 15, 2027



the
**Chickasaw
Nation**

POPS

FRI & SAT AT 7:30PM | CIVIC CENTER MUSIC HALL

**MUSIC TO DIE FOR:
SONGS FROM THE SHADOWS**
OCTOBER 30-31, 2026

A VERY MERRY POPS
DECEMBER 4-5, 2026

**A TINSEL TRADITION:
SONGS OF CHRISTMAS**
DECEMBER 5, 2026

HOW TO TRAIN YOUR DRAGON
JANUARY 15-16, 2027

EBONY & IVORY
FEBRUARY 19-20, 2027

THE MUSIC OF THE ROLLING STONES
MARCH 19-20, 2027

**BUGS BUNNY AT
THE SYMPHONY**
APRIL 23-24, 2027

*PROGRAMS, ARTISTS, AND DATES ARE SUBJECT TO CHANGE

Join us for the
2026-27 SEASON

50% OFF

OFF FOR FIRST-TIME SUBSCRIBERS*

*Eligible only to new subscribers or lapsed subscribers of five years or more. The first-time subscriber discount does not apply if you are a current subscriber to either the Classics or Pops series. Premium and box seating excluded.

OKCPHIL.ORG FOR TICKETS
OR CALL (405) 842-5387

ALEXANDER MICKELTHWATE
MUSIC DIRECTOR
OKCPHIL

SCAN QR
CODE FOR
MORE INFO



2026 Summer Artistic Staff

Green-Eyed Monster and *The Man with Two Wives*. For films he wrote the screenplays for *Travels with My Aunt*, *Something for Everyone*, *A Little Night Music*, and *Nijinsky*. His plays include *Big Fish*, *Little Fish* (1961), *Look: We've Come Through* (1961) and *We Have Always Lived in the Castle* (1966, adapted from the Shirley Jackson novel), he co-authored with Joseph Stein the book for a new production of the 1919 musical *Irene* (1973), wrote the books for *A Little Night Music* (1973), a new production of *Candide* (1973), *Sweeney Todd, the Demon Barber of Fleet Street* (1979, based on a version of the play by Christopher Bond), and *Meet Me in St. Louis* (adapted from the 1949 M-G-M musical), contributed additional material for the musical *Pacific Overtures* (1976), and wrote a new adaptation of the Kurt Weill opera *Silverlake*, which was directed by Harold Prince at the New York Opera. He received Tony and Drama Desk Awards for *A Little Night Music*, *Candide* and *Sweeney Todd*. Prior to his death in 1987 Mr. Wheeler was working on two new musicals, *Bodo* and *Fu Manchu*, and a new adaptation of *The Merry Widow*.

STEPHEN SONDHEIM 1930-2021 (SWEENEY TODD: Music & Lyrics) wrote the music and lyrics for *Saturday Night* (1954), *A Funny Thing Happened On The Way To The Forum* (1962), *Anyone Can Whistle* (1964), *Company* (1970), *Follies* (1971), *A Little Night Music* (1973), *The Frogs* (1974), *Pacific Overtures* (1976), *Sweeney Todd* (1979), *Merrily We Roll Along* (1981), *Sunday In The Park With George* (1984), *Into The Woods* (1987), *Assassins* (1991), *Passion* (1994), *Road Show* (2008) and *HERE WE ARE* (2023), as well as the lyrics for *West Side Story* (1957), *Gypsy* (1959), *Do I Hear A Waltz?* (1965) and additional lyrics for *Candide* (1973). *Side By Side* By Sondheim (1976), *Marry Me A Little* (1981), *You're Gonna Love Tomorrow* (1983), *Putting It Together* (1993/99), *Moving On* (2001), *Sondheim On Sondheim* (2010) and *Old Friends* (2023) are anthologies of his work as composer and lyricist. For films, he composed the scores of "*Stavisky*" (1974), co-composed the score for "*Reds*" (1981), and wrote songs for "*Dick Tracy*" (1990). He wrote songs for the television production "*Evening Primrose*" (1966), co-authored the film "*The Last of Sheila*" (1973) and the play *Getting Away With Murder* (1996) and provided incidental music for the plays *The Girls of Summer* (1956), *Invitation To A March* (1961), *Twigs* (1971) and *The Enclave* (1973). He won the Tony Award for Best Score for *Company*, *Follies*, *A Little Night Music*, *Sweeney Todd*, *Into the Woods*, and *Passion*, all of which won the New York Drama Critics' Circle Award, as did *Pacific Overtures* and *Sunday In The Park With George*, the latter also receiving the Pulitzer Prize for *Drama* (1985). Sondheim was born and raised in New York City. He graduated from Williams College, winning the Hutchinson Prize for Music Composition, after which he studied theory and composition with Milton Babbitt. He served on the Council of the Dramatists Guild, the national association of playwrights, composers and lyricists, and served as its president from 1973 to 1981. In 1983 he was elected to the American Academy of Arts and Letters and in 1990 was appointed the first Visiting Professor of Contemporary Theatre at Oxford University. He was awarded the Kennedy Center Honors in 1993, the National Medal of Arts in 1996, the MacDowell Medal in 2013 and the Presidential Medal of Freedom in 2015. His collected lyrics with attendant essays have been published in two volumes: "*Finishing the Hat*" (2010) and "*Look, I Made a Hat*" (2011). In 2010

the Broadway theater formerly known as Henry Miller's Theatre was renamed in his honor, and in 2019 he became the first living artist to have a theatre named in his honor on Shaftesbury Avenue when the refurbished Queen's Theatre in London's West End was renamed the Sondheim Theatre to commemorate his 90th birthday, by Sir Cameron Mackintosh.

MUSIC THEATRE INTERNATIONAL (MTI) is one of the world's leading theatrical licensing agencies, granting theatres from around the world the rights to perform the greatest selection of musicals from Broadway and beyond. Founded in 1952 by composer Frank Loesser and orchestrator Don Walker, MTI is a driving force in advancing musical theatre as a vibrant and engaging art form. MTI works directly with the composers, lyricists and book writers of these musicals to provide official scripts, musical materials and dynamic theatrical resources to over 100,000 professional, community and school theatres in the US and in over 150 countries worldwide. MTI is particularly dedicated to educational theatre, and has created special collections to meet the needs of various types of performers and audiences. MTI's Broadway Junior® shows are 30- and 60-minute musicals for performance by elementary and middle school-aged performers, while MTI's School Editions are musicals annotated for performance by high school students. Launched in May 2025, *MTI's Broadway Senior™* musicals are geared and adapted for adult performers 55 and over. MTI maintains its global headquarters in New York City with additional offices in London (MTI Europe) and Melbourne (MTI Australasia).

Celebrating the Art of Energy

Expand Energy proudly supports the Lyric Theater and the rich culture it brings to Oklahoma City.

expand



Follow us on social media to see our news and stories.



Shaping your clients'
legacies starts with
earning your trust.



Your clients deserve a financial partner you both can trust. At Argent, we've built our firm on never taking a client's business for granted.

621 N. Robinson, Suite 100, Oklahoma City, OK 73102
ArgentTrustOK.com | (405) 848-8899



Join the

CIRCLE OF STARS

- ★ Access to Premium Seating
- ★ Passes to our Exclusive Donor Lounge
- ★ Free, Reserved Parking at the Civic Center & Plaza Theatre

... AND MUCH MORE!

For More Information

Contact Sydney Lahodny at (405)524-9310, ext: 203
or email Sydney@LyricTheatreOKC.org



Jay D. Parks & Associates

Certified Public Accountants

Jay D. Parks
CPA, CPLC

Phone: (405) 341-7044
Fax: (405) 341-1482
jay@parkscpa.com

2801 S. Bryant
Edmond, OK 73013
parkscpa.com

Lyric Theatre Staff

Michael Baron.....	Producing Artistic Director
Jim Reynolds.....	Managing Director
Ashley Wells.....	Executive Producer
Matthew Sipress.....	Production/Company Manager
Bailey Maxwell.....	Company Manager/Casting & Outreach Coordinator
Steven Gillmore.....	Technical Director
Charlie Ludden.....	Director of Development & Capital Campaign
Mia Sherlock.....	Special Programs & Events Associate
Sydney Lahodny.....	Individual Campaign Manager
Sam Durbin.....	Director of Marketing and Public Relations
Miki Galloway.....	Marketing Manager
London Rushing.....	Patron Services Manager
Rylee Trent.....	Box Office Associate
Rozz Grigsby.....	Director of Education
Ashlyn Adams.....	Education Associate
Lauren Hathcoat.....	Guest Services/Facilities Manager
Leia VanLue.....	Director of Finance
Angela Dambold.....	Payroll & Benefits Administrator
Jeffrey Meek.....	Costume Director
Dayna Brown.....	Costume Shop Associate/Academy Designer
Isabel Delgado.....	Lighting Supervisor/Lead Electrician
Matthew Alvin Brown.....	Production & Rental Associate
Josie Walley.....	Scene Shop Manager
Ryan Ackerman.....	Carpenter
Emorie Mansur.....	Charge Artist

Lyric Theatre Summer Production Staff

Christopher Bruno (<i>Annie</i>) Lauren Deibert & Heath Jones Jr. (<i>Sweeney Todd</i>).....	Assistant Directors
Lily Noelle Blanchard & Eric Grigg (<i>Annie</i>), Jordan M. Andrews & Michael Stafford (<i>Sister Act, Sweeney Todd</i>).....	Associate Music Directors
Ashlyn Adams (<i>Annie</i>), Michelle Rambo (<i>Sister Act</i>).....	Assistant Choreographers
Jessica Seaton, Adam Behr.....	Assistant Stage Managers
Saleen Louceille.....	Stage Management Production Assistant
Nolia Sweatt & Emma Wells.....	Young Performers Supervisors for ANNIE
Travis Brorsen, Pawcademy LLC.....	Animal Trainer
Josie Walley.....	Deck Supervisor
Isabel Delgado & Kortney McQuade.....	Associate Lighting Designers
C. Augustus Mathews.....	Lead Electrician
Skylar Selby.....	Electrician/Light Board Operator
Madison Heckelsberg & Jillian Elliott.....	Electricians/Changeover/Deck Lighting
Sam Cox, Emily Morris.....	Electricians/Spot Ops
Greg Aldridge.....	Head Fly Operator/Carpenter
Cadence Cloud.....	Painter/Changeover
Gabriel Hancock.....	Painter
Kyle Wierick, Cayson Evans & Aidan Hilton.....	Carpenters/Changeover/Deck
Michael Jobe.....	Carpenter/Welder/Changeover
Memphis Ridge.....	Carpenter/Changeover
Noah Reed.....	Audio Engineer
Brett Havens & Rabbit Gipson.....	Audio Technicians/Runcrew
Matthew Alvin Brown.....	Assistant Prop Designer
Trista Cae Davidson, Sydni Martin & Ares Smith.....	Prop Artisans/Runcrew
Colin Shay.....	Sweeney Todd Chair Designer
Chase Mars.....	Sweeney Todd Chair Fabricator
Kayleen Thurow.....	Costume Designer's Assistant
Shae Chakraborty.....	Wardrobe Supervisor
Susan Tetreault, Christi Coufal-Tuya, Jeneva Burguiere & Natalie Jacobson.....	Costume Technicians
Kaleb Lambeth.....	Principal Dresser
Mariah Hunt, Mariah Warren, Adrian Montoya & Bethany Woemmel.....	Wardrobe Crew
Kelly Brisenon.....	Wardrobe Crew Intern
Brawna Gfeller.....	Hair/Wig Supervisor
Alexis Gass, Elizabeth Rescinito & Hannah Finnegan.....	Hair/Wig/Makeup Crew
Jeanne DeVillier.....	Patron Services Associate
Chase Malloy, Braiden Gregory & Brody Bork.....	Patron Services Interns
Bella Brown & Leah Hughes.....	Patron Services/Marketing Interns
Shay Pool.....	Marketing Intern
Javion Frazier & Kate Hanna.....	Development Interns

ST. LUKE'S ON BROADWAY

Sharing God's Love Through the Stories of Broadway.

A different Broadway musical is highlighted during worship. Each Sunday guest performers sing songs from the show and Senior Pastor, Dr. Bob Long, ties the sermon to the musical. Tickets are not needed to attend.

stlukesokc.org/Broadway

**COME FROM
AWAY**
JULY 26

**SHREK
THE MUSICAL**
AUGUST 16

**OPERATION
MINCEMEAT**
A NEW MUSICAL
AUGUST 2

**DEATH
BECOMES HER**
AUGUST 23

**THE
OUTSIDERS**
A NEW MUSICAL
AUGUST 9

HAMILTON
AN AMERICAN
MUSICAL
AUGUST 30



Downtown Campus

222 NW 15th St., Oklahoma City, OK 73103
Sunday Worship Times: 8:15, 9:30, & 10:50 a.m.

Edmond Campus

900 N. Sooner Rd., Edmond, OK 73034
Sunday Worship Times: 9 and 11 a.m.

Lyric Theatre Individual Donors

Lyric extends its appreciation to all of our generous donors. This list reflects contributions made June 1, 2025 to May 1, 2026 from individuals and family foundations in support of Lyric's programs and activities.

To join Lyric's family of supporters and enjoy the terrific benefits, please contact **Sydney Lahodny**, at (405) 524-9310 ext. 203 or email Sydney@LyricTheatreOKC.org for more information.

* Indicates a Member of the 2026 Circle of Stars

EXECUTIVE (\$5,000+)

Ole & Anne Andreassen*
Argent Trust Company
Bank of Oklahoma
John & Margaret Biggs*
F.W. Pete and Barbara Brown*
Ed & Matilda Clements*
Coin Collective
Compliance Solutions, Inc.
Ellen & Tim Fleming*
Dr. Eric & Shannon Friedman*
Anthony & Terri Gasaway Family Charitable Fund*
The Honorable & Mrs. Frank Keating*
Keith & Debbie Long*
Steve & Lisa Mason/Cardinal Engineering, Inc.
The McCasland Foundation
Jay Parks
Oklahoma Spine Hospital
Records-Johnston Family Foundation Inc.
The Dr. Elliott & Pamela Schwartz AEIOU Foundation*
Simple Modern
Paula & Carl Stover*
Stride Bank
John B. Williford
W&W/AFCO Steel, LLC
Kevin & Monica Wittrock*
Carolyne T. Zachritz*

DIRECTOR (\$2,500-\$4,999)

Patricia C. Austin*
Sherry K. Barton*
Dean John Bedford and Jo Rowan Charitable Fund*
Robert and Karen Browne Family Fund
Phil & Cathy Busey*
Dr. Pramod K. Chetty
Cynthia Colton
Terri Cooper*
Dr. Michael & Carolyn Crawford*
Ronna & Lawrence Davis*
Susan D. & Alton L. Dobbins*
Linda Ewerth*
Mark & Beverly Funke*
Jan & Ken Goodin*
Globe Life
Janet & John Hudson*
Barbara & Mason Jett, MD*
Peggy Kates*
John & Robin Klaser*

Janna & Josh Koehn*
Paula Love*
Lew McGinnis
Jean McLaughlin*
Drs. Charles & Jeanne Morgan*
O.K. Detrick/Gail Beals
Okie Dust & Friends
Phillips Murrah P.C.
Pie Junkie
George & Teresa Rhame*
Carl & Beth Shortt*
Siloam Lodge
Pam & Bill Shdeed
Gregory S. Smith*
Ellen & Andrew Spiropoulos*
Brad & Angela Steele*
Hogan Taylor
Billie Thrash
Britta Thrift*
Susan & Mike Turpen*

CHOREOGRAPHER (\$1,500-\$2,499)

Carol Abel*
J. Angela Ables*
Carol & Kerry Alexander*
Dr. & Mrs. Dewayne Andrews*
Dustin & Sarah Bashaw*
Elizabeth & Richard Buschelman*
Greg & Barbara Cable*
Randy & Melinda Compton*
Dr. William W. Cook
Mrs. Anthony Czerwinski*
David & Rurie Dobson*
Tony & Pam Dela Vega*
Drew & Linda Edmondson*
Jim & Christy Everest
Brad & Celine Ferguson*
Jacquelyn Ford & Jeremy Norwood*
Drs. Richard & Marlene Greyson*
Terry & Darlene Haynes*
Thomas & Rebecca Hill*
Vaughn & Theresa Holcer*
Betsy Jett-Gaske*
John & Jane Kenney*
Mike Korenblit
Jake & Barbara Langthorn*
Ann Larson*
Doug & Ginny Lawrence*
Ryan & Carrie Leonard*
Mr. & Mrs. Marty Lopez
MAP Energy
Lori & David Mathena*

Mr. & Mrs. Robert S. McKown*
Scott & Michelle McLaws*
Darla Morley*
Charles Oppenheim
John Plonkey*
Judy & Richard Riggs*
Megan Rooney*
Gary Williamson*
Carolyn & Bob Windsor*
Carol Wright*

VIP CLUB (\$1,000-\$1,499)

Ryan Ackerman*
Anonymous
Roddy & Angel Bates*
Sharlene S. Branham*
Glenn & Debra Blumstein*
Jerry Brown*
Center for Employment Law*
Corner Energy/Linda Whittington
Brad Curtis*
Karen Delaney
Cindy DiTomasso*
Joel Dixon*
William Trevor Dumolt*
Mari & Arnold Fagin*
Lori & Bennett Fuller*
Paul Garrett*
Debby & Jimmy Goodman*
Vicki Gourley*
Jim & Miranda Grant*
Darleene A. Harris*
Sammie & Lauranne Harris*
Richard Hicks*
Henry & Laura Hood
Richard R. Horton*
G.S. Hudson*
Terese & Quinn Irwin*
Tanner Jeffers
Melissa Smith-Johnson & Barry Johnson*
Mr. Ferooq S. Karim
Deidra Kistler
Lisa & Ray Lees*
Alexa Lienhard
Gwin Faulconer-Lippert & Rick Allen Lippert*
Robin J. Lister*
John & Jeannie Lopez
John & Patricia Lopez
Love's Travel Stops & Country Stores, Inc.
Rob & Karen Luke*
Maccini Construction Company*

26

27



CANTERBURY
VOICES



Stravinsky & Poulenc | 16
SYMPHONY OF PSALMS GLORIA | OCT

The BIG Sing | 17
ONE COMMUNITY. ONE VOICE. | OCT

Hark! The Joyful Sound | 6
CHRISTMAS WITH CANTERBURY | DEC

Choral Classics | 6
THE BEST OF CANTERBURY | MAR

TICKETS ON SALE SOON
CanterburyOKC.com

Lyric Theatre Individual Donors

Justin & Lindsey Manning*
Jan & Brad Marion*
Larry McClellin*
Andria Medina*
Mari Cook Medley*
Mark and Lynn Neumeister*
Dr. & Mrs. W.H. Oehlert*
OG&E
Jennifer Patterson*
David Rainbolt*
Jack & Marilyn Ransom*
Red J Ranch*
Dale & Phyllis Regier*
Dr. Kathryn Reilly*
Gary & Beverly Rosenhamer*
Lil Ross*
Erik Salazar & Christopher Lloyd*
JoAnn Schaub
Pooja Singhal, MD*
Cat Slack
Donna & Randy Smith*
Danny & Jeannie Stith*
Mary Deane Streich
Theresa A. & Dr. Virgil Todd*
The Toulouse Family
Sherry & Lonny Towell*
Jon Trudgeon
John & Carol Wall*
Dwayne Webb & Larry D. Buss*
Frank Wise & Anita Armstrong*

LEADING ROLE (\$750-\$999)

Leigh Ann & Paul Albers*
Jane & Paul D. Austin*
Scott Bartel*
Dr. & Mrs. William L. Beasley*
Dr. Jack & Ruth Beller*
CEC Corporation*
Linda Cavanaugh & William Clark*
Ray Cloer*
Keith Conaway*
Anna Connor*
Vicki & Richard Daniel*
Steve & Susan Donchin*
Kathryn Dooley*
Chad & Kris Duncan*
Bill Durrett*
William G. Emrich*
Tracy Evans*
Sandra & John Fanelli*
Buck & Gladys Feng*
P. Kay Floyd*
Lynna K. & Heather Geis*
John Gritz*
Tamela & Stephen Hamilton*
Cynthia Henderson-DiMauro*
Billy Grayson & Joe Highfill*
Win & Anne Holbrook*
Dr. Peggy Hudson & Paul Rodgers*

William James*
Diana & Danny Kennedy*
Debbie Koehn*
Terry & Amanda Kordeliski*
Ginger Langston*
Brenda & Tom McDaniel*
Marilyn & Bud Meade*
Tami Murphy Landscape Designs, Inc.*
Sean & Anne Nelson*
Ann Norris & Nancy Kruckeberg*
Oklahoma Allergy & Asthma Clinic*
Hemangi Pakala
Greg & Jan Peery*
Julie Riddell*
Leigh Roberts*
Elizabeth Ryan*
Michele & Douglas Samuels*
Roger & Debbie Soderberg*
Bill Swigert & Shane Wilson*
Leland Don Taylor*
Darlene S. Wallace*
Paul & Barbara Weigl
Jeff & Michele Weis*
John Michael Williams*
Meredith & Mike Wolfe*
Tonya York*

ENSEMBLE (\$500-\$749)

Rhiannon Abla
Teresa Atkinson*
Amy & Roy Bankhead*
Steve and Cheryl Black*
Andrew & Amber Blakeman*
The Boeing Company
Dr. Kyle D. Brotherton*
Beverly Brown
Jim Bob & Rachele Browning
Frank Bruno & Gina Bruno-Dunn*
Richard Canada*
Sunny Cearley
Susan L. Chambers
Betty Ann Cole*
Marc & Sally Cortez Jr.*
Thomas J. Cotrone*
Katherine Curry*
Jim & Patricia Dennis*
Nancy Dill*
Richard & Elizabeth Dobs
Kevin Dunnington
Sid & Toni Ellington
Dennis & Kay Emery*
Michael & Deborah Felice*
Barre Griffith*
Kim Haddad*
Rick & Carolyn Hansing*
Zoe Haskins*
Nancy J. Hasley*
Rita D. Hejny*
Heather Henson*

Rick & Jani Hill*
Richard & Cindy Homsey*
Christina & Don Horvat*
Barbara A. Hunt*
Jamaron LLC*
John Koons*
Pat Lagrow*
Stephanie Lewis*
Debra Logan & Darla Hobbs*
Shannon & Michael Love*
Mrs. Dianna Masters*
Dick & Patti Marshall*
Jeffrey & Theresa McDougall*
William & Loa McNeese*
Nora R. Medley*
Brian & Charlotte Mitchell*
Norick Family*
Norick Investment Company*
Richard & Gayle Parry
Ric & Jennie Penner*
Beverly Perri
Cacky Poarch
Paul Pearson*
Colin Raley
John Richardson
Phil & Avis Scaramucci*
Stephen & Mary Ann Schmitt*
A. Lee & Janice Segell*
Jay Smith*
Jennifer Tetnowski
Mr. & Mrs. David L. Thompson
John & Louise Thompson*
Scott & Mary Ann Tomlinson*
Jackie & Dennis Trepagnier*
Troy & Jennifer Vanbrunt*
Evan & Beth Vincent*
Ron Walters Homes*
Linda & Dick Wegener*
Patricia Williams
Gabe Woolery*
Melissa Yeagain
Karen Youngblood
Troy Zaikis

SUPPORTING ROLE (\$250-\$499)

Anonymous
Cassie Alexander
Michael Cawley
Rick Cain
Robert Dickey
Linda D. Garrett
Carl Gibson
Stefani Heller
Brenda Hernandez
Stephen A. Ladner
Gene & Vicki Lavastida
Cavett & Ashley Lee
Rotary Club of Oklahoma City
Anastasia Shirley

Lyric Theatre Individual Donors

Dr. Daniel Snell & Dr. Katie Barwick-Snell
Ben & Anny Stapp
Dr. Eugene & Mrs. Donna Steinberg
Douglas & Susan Stussi
Sara & Kyle Sweet
Tom A. Thomas, Jr. Fund
Charles Webster
Jim & Anna Marie Wight

CHORUS

(\$100-\$249)

Mark Aittaniemi
Scott & Catherine Anderson
Daniel Barnes
Lonnie & Cindy Bartel
Kerri Beasley
Cheryl Beatty
Rev. Stephen Bird
Pamela Blevins
Richard & Vicki Bogert
Sarah Bowell
Jane Bronnenberg
Juan Camarena
Rachel Cannon
Christine Carpenter
Sandra J. Clapp
Casey Cornett
Susan A. Clark
LaTasha & Jeff Craig
Alice Dahlgren
Susan Danielewicz
Brenna Dixon
Glenda Eisenhower Donor Designated Fund
Mark Erickson
Sarah & Judd Fisher
Marca & Bob Floyd
Ronald & Ginny Freeman
Thomas Fleming
Rachael Geiger
Ana Gomez
Bailey Gordon
Katie Rose-Gorton & Henry Gorton
John & Laura Hart
William Higgins
James & Jennifer Hinkle
Mary & Karl Hirsh
Jeanne Anne Hubbard
Jesse & Arlene Hunter
Meg & Frank III
Patti R. James
Dr. Karen & Larry Jennings
Lacy Kelly & Matthew Fong
Mike Knedler
Rick & Ludinia Lahodny
Kristi Leonard
Kay B. Lewis
Seth Lewis
Joseph Longwell
Leslie Coale-Mossman & Sean Mossman
Walt Myrick

Max Patterson
Richard Pingrey
Kathryn Potts
Steve & Risa Powell
Catherine Provence
Matt & Cherish Ralls
Dr. & Mrs. Michael Fred Robinson
Barry Roseman
Janet & Arthur Rus
Cindi M. Shelby
Jerrod Shouse
Michele Simon
Drs. Stephen & Roberta Sloan
Grant & Amanda Soderberg
John Spencer
Jerry & Karen Stephens
Jim & Sharon Strate
Dax Strickland
Mike Stuart & Bruce Hall
Heather Treaster
Randi Von Ellefson
Winnifred Walden
Wiley & Janet Williams

IN HONOR & MEMORIAL DONATIONS

**In Memory of
Elizabeth Kathleen Garrett Willard**
Paul Garrett

**In Memory of
Peggy & Gale Cable**
Barbara Cable

**In Memory of
Bobby Burbridge Lane**
Paula & Carl Stover

**In Honor of
Ellen Fleming**
The O'Connor Family Foundation

**In Honor of
Mary Deane Streich**

**In Honor of
Farooq Karim**
The Oklahoma Art League

**SNAP THIS QR CODE
TO ADD YOUR NAME
TO LYRIC'S LIST OF
BELOVED DONORS!**



Lyric Theatre Board of Directors

EXECUTIVE COMMITTEE

ELLEN SPIROPOULOS.....	<i>President</i>
ELLEN FLEMING.....	<i>President-Elect</i>
DR. ERIC FRIEDMAN.....	<i>Immediate Past President</i>
BRAD STEELE.....	<i>Secretary</i>
CARRIE LEONARD.....	<i>Vice President of Development</i>
BLAKE LAWRENCE.....	<i>Vice President of Education</i>
CAROL ALEXANDER.....	<i>Vice President of Facilities</i>
MEGAN ROONEY.....	<i>Vice President of Finance</i>
JJ KUHN.....	<i>Vice President of Marketing</i>
SCOTT BARTEL.....	<i>Vice President of Governance</i>
MONICA WITTRICK.....	<i>Vice President of Membership</i>
BRAD FERGUSON.....	<i>Member-at-Large</i>
LORI MATHENA.....	<i>Member-at-Large</i>

BOARD MEMBERS

Mark Choate
 Edward Clements
 Anna Connor
 David Dobson
 Toni Ellington
 P. Kay Floyd
 Brenda Hernández
 Janet Hudson
 Farooq Karim
 Alexa Lienhard
 Christopher Lloyd
 Robert S. McKown
 Scott McLaws
 Sarah Moore

Matt Nail
 Rachel Pounder
 Richard Riggs
 Gary Rosenhamer
 Pam Shanklin
 Dr. Pooja Singhal, M.D.
 Britta Thrift
 Dr. Patricia Williams, M.D.
 Meredith Wolfe
 Tonya York

LAPS Co-Chairs

Whitney Cole
 Ashley Cornelson

EMERITUS BOARD MEMBERS

J. Angela Ables
 Patricia Austin
 Gail K. Beals
 Randy Compton
 Dr. David Flesher, M.D.
 Linda Garrett

Dee Hessel
 L. Win Holbrook
 Richard R. Horton
 Barbara Jett
 Ginny Lawrence
 Robin J. Lister

Keith Long
 Paula Stover
 Mary Deane Streich
 Jon Trudgeon
 Mike Turpen, Esq.

Single Tickets Available 24/7 at LyricTheatreOKC.org or by Phone (405) 524-9312 Mon-Fri Noon-5pm

"Discover the remarkable true story of the small town that welcomed the world"

**COME
 FROM
 AWAY**

SEPTEMBER 16-OCTOBER 4
 at Lyric's Plaza Theatre



NOVEMBER 25-DECEMBER 26
 at Lyric's Plaza Theatre

Lyric Theatre Sponsors



SEASON SPONSOR



LYRIC'S "A CHRISTMAS CAROL"
PRESENTING SPONSOR



"THE GREAT AMERICAN MUSICAL"
SPONSOR



LYRIC'S "FAMILY FAVORITE MUSICAL"
SPONSOR



FOUNDATION & MAJOR SEASON SUPPORT



E.L. and Thelma Gaylord
FOUNDATION



IN-KIND & OTHER SEASON SUPPORT



EDUCATION & ARTS OUTREACH SUPPORT

The Dr. Elliott & Pam Schwartz AEIOU Foundation • Devon Energy Corporation
Allied Arts Educational Outreach Program • Oklahoma Arts Council • The McCasland Foundation
Globe Life And Accident Insurance Company • The McGee Foundation • Compliance Solutions

SPECIAL THANKS

ScissorsTail Interpreting, LLC • Simple Modern

And, to the following organizations who match the gifts of their employees:
Devon Energy, AT&T, Bank of America, Boeing, MAP Energy, The Coca-Cola Company, Dell,
E.L. & Thelma Gaylord Foundation, Inasmuch Foundation, and Kimray.

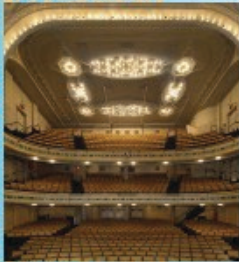


**FALL
THEATRE TOUR**
OCT 15-20, 2026



**LYRIC THEATRE
OF OKLAHOMA**

The Official State Theatre of Oklahoma



Your theatre tour includes:

- 6 Days / 5 Nights at the Westin Times Square
- 3 Theatre Productions
- Broadway-up-Close Walking Tour
- Breakfast & Theatre Talk
- 2 Group Dinners
- 54 Below Cabaret - Lyric Theatre on Broadway
- Tour of Carnegie Hall
- Artist Q&A
- Frick Collection
- Hudson Theatre Tour
- Tenement Museum

\$5395
per
person based
on Double Occupancy
without Airfare

Single Supplement
— \$1,125 —

OPTIONAL GROUP
AIRFARE FROM
OKLAHOMA CITY — \$550 —

For more info contact Break-Away Tours:

1-800-962-7325

info@break-awaytours.com



LYRIC THEATRE
OF OKLAHOMA

2027 SEASON



February 17 - March 7
AT THE PLAZA THEATRE



Marquee Sponsor
Express

June 15 - 20
AT THE CIVIC CENTER



July 6 - 11
AT THE CIVIC CENTER



Presenting Sponsor
Continental

July 20 - 25
AT THE CIVIC CENTER



A New Musical Rom-Com to Die For

September 22 - October 10
AT THE PLAZA THEATRE

November 24 - December 26
AT THE PLAZA THEATRE



Renew or Subscribe Today!

Visit LyricTheatreOKC.org or call (405) 524-9312