



LYRIC THEATRE OF OKLAHOMA

THE OFFICIAL STATE THEATRE

RICHARD O'BRIEN'S

THE ROCKY HORROR SHOW



OCTOBER 2 - NOVEMBER 1

LYRIC AT THE PLAZA

2025 Season • LyricTheatreOKC.org



WE PRODUCE ENERGY THAT FUELS MODERN LIFE.

Devon Energy is a proud partner
of Lyric Theatre and the Oklahoma
performing arts community.

devonenergy.com



Director's Welcome

Dear Rocky Horror Fans!

It's the 50th Anniversary of *The Rocky Horror Show* and what better way to celebrate than at Lyric Theatre! We've been performing it live on stage for almost 20 years!

In the past, we've set the show in a '50s drive-in, a sideshow, an '80s glam/rock club, and a southern gothic mansion. For our 2022 production we took our cue from a line the narrator shares early in the show: *"It seemed a fairly ordinary night when Brad Majors, and his fiancée Janet Weiss ... two ordinary healthy kids ... left Denton that late November evening..."*



Jeffrey Meek, our fabulous resident costume designer, proposed that we set the show in Denton, Texas ... because what's scarier than Texas! It was such a huge hit with audiences we decided to bring it back with a few new surprises! It has everything you love about *Rocky Horror Show*, but with a Texas-sized twist! Enjoy the show!

See you in the lobby,

Michael Baron

Michael Baron



HAPPY HOUR

EVERY DAY FROM 2-6 PM

\$4 DRAFTS

\$1 OFF MARGARITAS

FREE CHIPS & SALSA

OPEN DAILY 11:00 AM - 10:00 PM

MAKE YOUR RESERVATION: WWW.REVMEXOKC.COM

916 NW 6TH ST. OKC 73106 (405) 606-7861



TRICK or TREAT MIXES

CHOOSE *three* CANDY OPTIONS

Reese's

OREO

m&m's

Butterfinger

HEATH



STRAWBERRY, BUTTER PECAN & CHERRY ARE ALSO AVAILABLE AS AN OPTION
HERE FOR A SPOOKY LIMITED TIME



LYRIC THEATRE OF OKLAHOMA

MICHAEL BARON, PRODUCING ARTISTIC DIRECTOR

JIM REYNOLDS, MANAGING DIRECTOR

ASHLEY WELLS, EXECUTIVE PRODUCER

PRESENT



Book, Music & Lyrics by **RICHARD O'BRIEN**

SCENIC DESIGNER
DILLON BERTHOLF

COSTUME DESIGNER
JEFFREY MEEK

LIGHTING DESIGNER
FABIAN J. GARCIA

MUSIC DIRECTION BY
MATTHEW JONES

SOUND DESIGNER
JACOB HENRY

PROPS DESIGNER
AMANDA SCHNAKE

WIG & MAKEUP DESIGNER
JOANNE MIDDLETON WEAVER

CHOREOGRAPHER
ABBIE RUFF

STAGE MANAGER
LAUREN WHYTE

DIRECTED BY
MICHAEL BARON[^]

"THE ROCKY HORROR SHOW" SPONSORS

Steve & Lisa Mason

Dusty Gilpin

ACKNOWLEDGEMENTS

THE ROCKY HORROR SHOW is presented by arrangement with Concord Theatricals
on behalf of The Really Useful Group. www.ConcordTheatricals.com

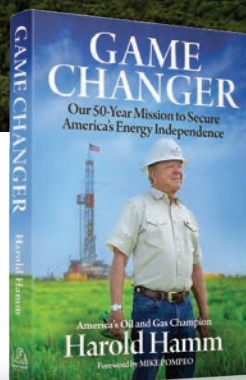
Lyric Theatre of Oklahoma operates under agreements with Actors' Equity Association, the union of professional actors and stage managers in the United States, and The Stage Directors and Choreographers Society. Lyric Theatre is a member of the National Alliance for Musical Theatre (NAMT). Lyric Theatre programs are sponsored, in part, by The National Endowment for the Arts, Allied Arts, and the Arts Council of Oklahoma.

*Member of Actors' Equity Association (AEA) • ^Member of United Scenic Artists (USA)
+ Member Stage Directors and Choreographers Society (SDC) • #Local 802 - American Federation of Musicians (AFM)



Inspiring the Next Generation of Game Changers

THE FUTURE of our country and our world depends on game changing thinkers – technologists, engineers, geologists – who are determined to discover what's next, with the understanding that hydrocarbons will be essential and irreplaceable for decades to come. Continental Resources will lead the way by producing clean, reliable, affordable, abundant American energy. *We are America's Energy Champion.*



Continental Resources is proud to support Lyric Theatre and their mission to enrich the quality of life for the people of Oklahoma.



America's
Energy
Champion

Song List

ACT ONE

<i>Science Fiction Double Feature</i>	Usherette
<i>Damn It Janet</i>	Brad, Janet
<i>Over at the Frankenstein Place</i>	Janet, Brad, Riff Raff
<i>The Time Warp</i>	Riff Raff, Magenta, Columbia, Narrator
<i>Sweet Transvestite</i>	Frank 'N' Furter
<i>The Sword of Damocles</i>	Rocky
<i>I Can Make You a Man</i>	Frank 'N' Furter
<i>Hot Patootie</i>	Eddie
<i>I Can Make You a Man</i> (reprise)	Frank 'N' Furter

– Intermission –

ACT TWO

<i>Touch-a Touch-a Touch Me</i>	Janet, Magenta, Columbia
<i>Once in a While</i>	Brad
<i>Eddie's Teddy</i>	Dr Scott, Narrator, Frank 'N' Furter, Columbia
<i>Planet Schmanet-Wise Up Janet Weiss</i>	Frank 'N' Furter
<i>Floor Show" / "Rose Tint My World</i>	Company
<i>I'm Going Home</i>	Frank 'N' Furter
<i>Super Heroes</i>	Brad, Janet, Narrator
<i>Science Fiction Double Feature</i> (reprise)	Usherette

The Band

Guitar	Jay Gleason
Bass Guitar	Rebekah Stafford
Drums	Kirstyn Norris
Fiddler	Shawna Kennedy

THE VIDEOTAPING OR MAKING OF ELECTRONIC OR OTHER AUDIO AND/OR VISUAL RECORDINGS OF THIS PRODUCTION AND
DISTRIBUTING RECORDINGS OR STREAMS IN ANY MEDIUM, INCLUDING THE INTERNET, IS STRICTLY PROHIBITED, AND
A VIOLATION OF THE AUTHOR(S)'S RIGHTS AND ACTIONABLE UNDER UNITED STATES COPYRIGHT LAW.
FOR MORE INFORMATION, PLEASE VISIT: <https://concordtheatricals.com/resources/protecting-artists>

We are honored to support **Lyric Theatre**

Express Employment Professionals
has been finding job seekers work since
1983 across North America, South Africa,
Australia and New Zealand.

Express strives to provide hope through
employment and it starts with our
International Headquarters based
right here in Oklahoma City.

***Express knows jobs,
get to know Express!***

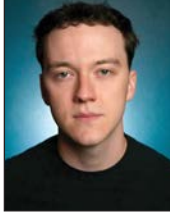


To find a location near you, visit
ExpressPros.com/Locations

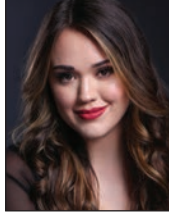
The Cast



LEE WALTER*
Frank-N-Furter



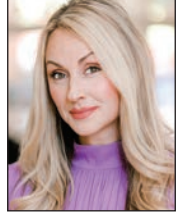
LOGAN R. WRIGHT
Brad



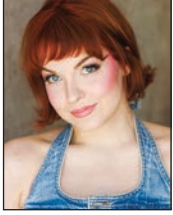
SIERRA SIKES
Janet



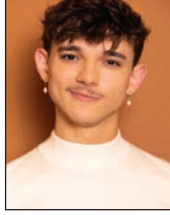
LYN CRAMER
Narrator



LEXI WINDSOR*
Usherette/Magenta



EMILY J. PACE*
Columbia



JOEL STEPHENS
Riff Raff
(Frank-N-Furter u/s)



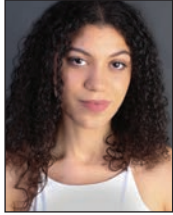
GARRISON MACK
Rocky
(Riff Raff u/s)



ZACHARY WRIGHT
Eddie/Dr. Scott



MARIAH WARREN
Phantom
(Magenta/Narrator u/s)



CAPRIE GORDON
Phantom
(Columbia u/s)



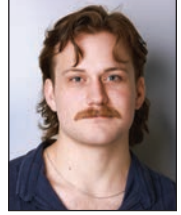
BRIAM SKY
Phantom
(Eddie/Dr. Scott u/s)



JOSHUA FAGGION
Phantom
(Brad/Rocky u/s)



GABRIELLA BECK
Swing
(Phantom/Janet u/s)



MERRICK THEOBALD JR.
Swing
(Phantom u/s)

*Member of Actors' Equity Association (AEA)

DONATE TO LYRIC THEATRE TODAY!

Lyric has delighted audiences with the best of American theatre since 1963, but it is our many supporters and sponsors who deserve a standing ovation. Your support makes the magic happen!





Oklahoma City

UNIVERSITY

Bass School of Music

*Our 74th Consecutive Season
of Opera & Music Theater*

2025/2026

STREET SCENE

OCTOBER 3-5

MAINSTAGE OPERA

RHONDDA RIPS IT UP!

OCTOBER 10-12

SPOTLIGHT OPERA

IRVING BERLIN'S

WHITE CHRISTMAS

NOVEMBER 21-23

MAINSTAGE MUSICAL

THE MERRY WIDOW

FEBRUARY 27-28-MARCH 1

MAINSTAGE OPERA

THE PROM

MARCH 6-8

SPOTLIGHT MUSICAL

ANASTASIA

APRIL 24-26

MAINSTAGE MUSICAL



Above & Beyond AV

Installed AV Technology | Integrated Systems
Onsite Technical Support | System Maintenance
In-House Partnerships | Live Event Production
Creative Services | Rental



www.corys.pro

The Cast

(In alphabetical order)

GABRIELLA BECK (*Swing, u/s Janet & Phantom*) is making her Lyric Theatre debut. REGIONAL THEATRE: *Texas Outdoor Musical, The Tempest, The Gondoliers, Texas Outdoor; Cabaret, Sooner Theatre; The Addams Family, Big Fish, Upstage Theatre*. OTHER THEATRE: *Sweeney Todd, Much Ado About Nothing*, University of Central Oklahoma. ADDITIONAL CREDITS: B.M. University of Central Oklahoma.

LYN CRAMER (*Narrator, Intimacy Choreographer*) AT LYRIC: *Mary Poppins (Director), The Rocky Horror Show (2022), Singin' in the Rain, Fun Home, Assassins, Boeing Boeing, Billy Elliot, Urinetown, Mamma Mia!, The Drowsy Chaperone, Big Fish, Dreamgirls, Little Mermaid, The Will Rogers Follies, Hairspray, 42nd St., Bye Bye Birdie, Smokey Joe's Café, Five Guys Named Moe, Cabaret, The Best Little Whorehouse in Texas, Aida, Dames at Sea, Swing, Grease*. REGIONAL THEATRE: *Dirty Rotten Scoundrels, Cats, Thoroughly Modern Millie, Secret Garden, The Full Monty, My Fair Lady, How to Succeed, Broadway Rose Theatre Company*. OTHER THEATRE: *The Wild Party, Crazy For You, Pippin, A Chorus Line, La Cage Aux Folles, Curtains, On the Town, Sweet Charity, Company, My One and Only, Rent*, University of Oklahoma. ADDITIONAL CREDITS: Recently Retired Endowed Professor of Musical Theatre Dance, University of Oklahoma. Author: *Creating Musical Theatre: Conversations with Broadway Directors and Choreographers*.

JOSHUA FAGGION (*Phantom, u/s Brad & Rocky*) is making his Lyric Theatre debut. OTHER THEATRE: *The 25th Annual Putnam County Spelling Bee*, University of Oklahoma; *A Funny Thing Happened on the Way to the Forum*, North Raleigh Arts and Creative Theatre. ADDITIONAL CREDITS: Currently working towards a B.F.A. in Musical Theatre from University of Oklahoma.

CAPRIE GORDON (*Phantom, u/s Columbia*) AT LYRIC: *Ain't Misbehavin'*. OTHER THEATRE: *All Shook Up, Cinderella*, College Light Opera Company; *Ain't Misbehavin', Rock of Ages, The Apple Tree, Nine*, University of Central Oklahoma. ADDITIONAL CREDITS: B.A. in Music from Academy of Contemporary Music, University of Central Oklahoma; Assistant

General Manager, School of Rock; Vocalist with *Dear Daisy* and *The Confused*.

GARRISON MACK (*Rocky, u/s Riff Raff*) – is making his Lyric Theatre debut. OTHER THEATRE: *Head Over Heels, Calvin Burger, Ballad of Baby Doe*, Oklahoma City University; *9 to 5, Le Nozze Di Figaro*, Florida State University.

EMILY J. PACE* (*Columbia*) – AT LYRIC: *Beautiful: The Carole King Musical, Jersey Boys, OKLAHOMA! Musical Interactive, Kinky Boots, Lyric's A Christmas Carol, Lyric Kids' Clubhouse* (writer and actor), *The Rocky Horror Show (2022, 2019), Frost/Nixon, Junie B. Jones the Musical, Rock of Ages, Titanic*. REGIONAL THEATRE: *Grease, Matilda, Shrek the Musical, We've Only Just Begun: Music of The Carpenters, One Hit Wonders of the 60s and 70s Cabaret, Laurel Canyon Cabaret, Casa Mañana; Superstitutions, A Funny Thing Happened on the Way to the Forum*, OKC Rep; *The Producers, Heathers: The Musical, American Idiot*, The Pollard Theatre Company; *Little Shop of Horrors, Avenue Q, Tommy, Rent*, Tulsa Project Theatre.

SIERRA SIKES (*Janet*) – AT LYRIC: *Rodgers & Hammerstein's Oklahoma!, Waitress, Jersey Boys, Head Over Heels, The Rocky Horror Show (2022), Distant Thunder*. REGIONAL THEATRE: *Disaster!*, Pollard Theatre. OTHER THEATRE: *The Wizard of Oz, Sooner Theatre; Rock of Ages, Nine, The Most Happy Fella, Merrily We Roll Along, The Theory of Relativity*, University of Central Oklahoma. TELEVISION: *NBC's The Voice Season 25*. ADDITIONAL CREDITS: B.M. in Musical Theatre from The University of Central Oklahoma. Original music available on all streaming platforms-Sierra Sikes & OK3.

BRIAM SKY (*Phantom, u/s Eddie & Dr. Scott*) – AT LYRIC: *Lyric's Musical Theatre Interactive (Will Rogers), Lyric's A Christmas Carol*. REGIONAL THEATRE: *A Curious Incident of the Dog in the Nighttime, Sense and Sensibility, Big Fish*, Lyric's Thelma Gaylord Academy; *The Shark is Broken*, The Pollard Theatre. OTHER THEATRE: *The Theory of Relativity*, OKCParks.



YOUR SEASON STARTS HERE!



CLASSICS

SATURDAYS AT 8PM | CIVIC CENTER MUSIC HALL

**LEGENDS: ORTIZ, RACHMANINOFF,
JANACEK, TCHAIKOVSKY**
SEPTEMBER 20, 2025

**OKLAHOMA STORIES:
CELEBRATING OUR FUTURE**
OCTOBER 25, 2025

**JOEL LEVINE
CONDUCTS TCHAIKOVSKY**
NOVEMBER 15, 2025

**MOZART'S RIVALS:
RACE TO THE TOP**
JANUARY 10, 2026

**THE FIRE OF LOVE:
ROMEO AND JULIET**
FEBRUARY 14, 2026

MASTERS OF MUSIC: ITALY
MARCH 14, 2026

BRAHMS & BRONFMAN
APRIL 4, 2026

**MAHLER'S RESURRECTION
SYMPHONY**
MAY 2, 2026

*PROGRAMS, ARTISTS, AND DATES ARE SUBJECT TO CHANGE

the **Chickasaw Nation** **POPS**

FRI & SAT AT 8PM | CIVIC CENTER MUSIC HALL

**DOLLY PARTON'S THREADS:
MY SONGS IN SYMPHONY**
NOVEMBER 7-8, 2025

A VERY MERRY POPS
DECEMBER 5-6, 2025

TANGO CALIENTE!
JANUARY 30-31, 2026

CLASSICAL MYSTERY TOUR
FEBRUARY 27-28, 2026

**SYMPHONICON: MUSIC FROM COMICS,
SCI-FI AND VIDEO GAMES**
MARCH 27-28, 2026

**DISNEY IN CONCERT:
ONCE UPON A TIME**
APRIL 17-18, 2026



Join us for the
2025-26 SEASON

50% OFF

OFF FOR FIRST-TIME SUBSCRIBERS*

OKCPHIL.ORG FOR TICKETS
OR CALL **(405) 842-5387**

 **OKCPHIL**
ALEXANDER MICKELTHWITE
MUSIC DIRECTOR

—orchestrating passion

SCAN OR
CODE FOR
MORE INFO



*Eligible only to new subscribers or lapsed subscribers of five years or more. The first-time subscriber discount does not apply if you are a current subscriber to either the Classics or Pops series. Premium and box seating excluded.

The Cast

(In alphabetical order)

JOEL STEPHENS (*Riff Raff, u/s Frank-N-Furter*)
AT LYRIC: *Rodgers & Hammerstein's Oklahoma!, Beautiful: The Carole King Musical, Joseph and the Amazing Technicolor Dreamcoat, Waitress, Grease, Jersey Boys, Rodgers & Hammerstein's Cinderella, Titanic*. REGIONAL THEATRE: *Rock of Ages, Arts Center of Coastal Carolina; Escape To Margaritaville, Crane River Theatre*. OTHER THEATRE: *Catch Me If You Can, Bonnie & Clyde, Little Women, She Loves Me, The Wedding Singer, Rock of Ages, University of Central Oklahoma; The Polar Express, Rail Events/Warner Brothers*. ADDITIONAL CREDITS: B.M. in Musical Theatre from the University of Central Oklahoma.

MERRICK THEOBALD JR. (*Swing, u/s Phantom*)
AT LYRIC: *Joseph and the Amazing Technicolor Dreamcoat*. OTHER THEATRE: *Crazy for You, Bright Star, Alice by Heart, Heathers, University of Oklahoma*. ADDITIONAL CREDITS: He is a Senior Musical Theatre major at OUMT.

LEE WALTER* (*Frank-N-Furter*) – AT LYRIC: *Rodgers & Hammerstein's Cinderella, The Rocky Horror Show* (2022). REGIONAL THEATRE: *A Christmas Carol Experience, No. 11 Productions; Head Over Heels, Forestburgh Playhouse; The Rocky Horror Show, Dreamgirls, Cabaret, White Rabbit Red Rabbit, Dallas Theater Center; Kinky Boots, Angels in America I & II, The View Upstairs, A Chorus Line, Head Over Heels, Songs For A New World, The Legend Of Georgia McBride, The Toxic Avenger, When Pigs Fly, Pageant, & Jada Bells, Uptown Players; What To Send Up When It Goes Down, Stage West; RENT, Casa Manana; Xanadu, Little Shop Of Horrors, Mack & Mabel, Caroline or Change, Theatre Three; Hit The Wall, Smokey Joe's Café, Parade, WaterTower Theatre; Rodgers & Hammerstein's Cinderella, Zach Theatre*. TELEVISION/FILM: *Prison Break, Murder Made Me Famous, Sh'ma*.

MARIAH WARREN (*Phantom, u/s Magenta & Narrator*) – AT LYRIC: *Waitress, Lyric's A Christmas Carol* (2020-24), *Once On This Island, Rodgers & Hammerstein's Cinderella, Lyric's Musical Interactive (Cinderella: A Literary Tale & OKLAHOMA!), The Prom, The Sound of Music, Big River, The Rocky Horror Show, Kinky Boots, Distant Thunder*. REGIONAL THEATRE: *Dance Nation, Southern Plains Productions; As You*

Like It, A Midsummer Night's Dream, Romeo & Juliet, The Tempest, Oklahoma Shakespeare; Beehive, Heathers the Musical, Pollard Theatre; South Pacific, Jewel Box Theatre.

LEXI WINDSOR* (*Usherette/Magenta*) – AT LYRIC: *Rodgers & Hammerstein's Cinderella, The Sound Of Music, The Prom, Singin' In The Rain, The Cat In The Hat, Bright Star, Rock Of Ages, James & The Giant Peach, The Drowsy Chaperone, Big Fish, A Little Night Music, The Odd Couple, Xanadu, Lyric's A Christmas Carol, Ragtime, Boeing Boeing, The Rocky Horror Show, A Chorus Line, Grease, The Will Rogers Follies, Gypsy, The Who's Tommy, Joseph & The Amazing Technicolor Dreamcoat, Rodgers & Hammerstein's Oklahoma!*. REGIONAL THEATRE: *The 39 Steps, A Year With Frog & Toad, Godspell, Little Me, OKC REP; Company, Pollard Theatre; A Christmas Carol, Casa Mañana; 42nd Street, Footloose, Sweet Charity, Bucks County Playhouse*. NEW YORK: *The Best Little Whorehouse Goes Public, Subways Are For Sleeping, Fade Out Fade In, Nab-A-Date, The View From Here, Mr. Confidential, Ziegfeld's Midnight Frolic, F.A.O. Schwarz Bob Mackie Barbie, Spirit Cruises*. INTERNATIONAL TOURS: *American Bombshells, USO Liberty Bells*.

LOGAN R. WRIGHT (*Brad*) – AT LYRIC: *Waitress*. REGIONAL THEATRE: *Rent, Southern Plains Productions*. OTHER THEATRE: *Big Fish, Theory of Relativity, Sweet Charity, Rock of Ages, Rent, Sweeney Todd, The Wedding Singer, Bonnie & Clyde, Fugitive Songs, She Loves Me, University of Central Oklahoma; The Polar Express, Rail Events Productions*.

ZACHARY WRIGHT (*Eddie/Dr. Scott*) – AT LYRIC: *Waitress*. REGIONAL THEATRE: *The Hunchback of Notre Dame, Kismet Arts Studio*. OTHER THEATRE: *The Wedding Singer, Bonnie and Clyde, Little Women, Sweeney Todd, Goosebumps: The Phantom of the Auditorium, University of Central Oklahoma; 25th Annual Putnam County Spelling Bee, Picnic, Titanic: The Musical, The Music Man, The Wizard of Oz, Joseph and the Amazing Technicolor Dreamcoat, Rose State College*. FILM: *Jurassic Games: Extinction*. TELEVISION: *Konnect HQ*. ADDITIONAL CREDITS: *The Polar Express, Railway Productions. The River City Players, Tahlequah Playhouse*.



Lyric's A Christmas Carol

ALLIED ARTS

Allied Arts is proud to support more than 40 local nonprofit arts and cultural organizations annually, including Lyric Theatre. Together, we reach more than one million people each year statewide with inspiring, educational and community-building programming.

With **you** art can.

(405) 278 - 8944 | alliedartsokc.com



Join the CIRCLE OF STARS

- ★ Access to Premium Seating
- ★ Passes to our Exclusive Donor Lounge
- ★ Free, Reserved Parking at the Civic Center & Plaza Theatre

... AND MUCH MORE!

For More Information

Contact Sydney Lahodny at (405) 524-9310, ext: 203
or email Sydney@LyricTheatreOKC.org




AURORA
ALL DAY CAFE
NOW OPEN UNTIL 9:00 PM
BECAUSE BREAKFAST SHOULDN'T HAVE A CURFEW

HAPPY HOUR
TUES - SAT • 3PM-6PM
\$13 BURGER, BEER & SHOT

JOIN US UNDER THE RAINBOW:
1734 NW 16TH ST. OKC 73106 (405) 609-8854

ADD YOURSELF TO THE WAITLIST:
SHINEWITHAURORA.COM

Lyric Theatre Artistic Staff

MICHAEL BARON⁺ (*Director*) – See page 26.

ABBIE RUFF (*Choreographer*) – is ecstatic to be making her professional choreographic debut with Lyric Theatre of Oklahoma! Abbie grew up in Oklahoma and received her dance and theatre training from Dance Unlimited and Spotlight Acting Academy before earning her B.F.A. in Musical Theatre from Texas Christian University. She has since performed, assisted, and taught at various theatres, schools, and studios around the country. Some of her favorite performance credits include *West Side Story*, *Matilda*, *Sweet Charity*, *Oklahoma!*, *Cinderella*, and DCL Dance Company. ASSOCIATE WORK: *Rodgers & Hammerstein's Cinderella*, *West Side Story*, *Matilda*, Lyric Theatre of Oklahoma; *Anything Goes*, Lyric Stage; The Music Man in Concert, OKC Rep. EDUCATIONAL THEATRE CHOREOGRAPHY: *Legally Blonde*, *Jr*, *Elf*, *You're a Good Man, Charlie Brown*, Spotlight Acting Academy; *A Day in Hollywood*, *A Night in the Ukraine*, Theatre TCU.

DR. MATTHEW J. JONES (*Music Director*) – is an assistant professor of musicology at Oklahoma City University. An award-winning scholar, he is the author of two books, *Love Don't Need a Reason: The Life and Music of Michael Callen* (2020), *How to Make Music in an Epidemic: Popular Music Making during the AIDS Crisis, 1981-1996* (2025) as well as numerous articles about LGBTQ+ music and politics. An active pianist and singer, he is the former Artistic Director of Pride Chorus Houston and has served as house pianist in piano bars in New York City and Houston. He has performed with Canterbury Singers, The Virginia Consort, and Athens Master Chorale, and been musical

director for dozens regional, community, and university productions around the country, including recent stints as music director for Jewish Theater of Oklahoma's production of *Bris Amis*, The Boom's productions of *Pageant*, *Silence! The Musical*, *Stranger Sings*, and *Oklahoma City Senior Follies*.

DILLON BERTHOLF (*Scenic Designer*) – was thrilled to design this cheeky, camp, unapologetically Texas version of *The Rocky Horror Show* - a mix of flagrant, Texas-themed postcards all jumbled together. When you do Rocky Horror, you have to go big... and what's bigger than Texas! Dillon is an architectural designer from Oklahoma City with a Bachelor of Architecture from Oklahoma State University. Recent projects include: *The Curious Incident of the Dog in the Night-Time*, Oklahoma State University; *August: Osage County*, *The Pajama Game*, Town and Gown Theatre. "If you can see the walls, there's not enough crap on 'em!"

JEFFREY MEEK (*Costume Designer*) – 25th season and over 150 productions with Lyric Theatre of Oklahoma, 8 World Premiers. REGIONAL: Ohio Light Opera: Over 50 productions, including *Lady Kate* (World Premiere), *Regrets Only* (World Premiere), *The Arcadians* (U.S. Premiere), *The Grande Duke* (U.S. Premiere); Evan Bernardin Productions: *Merry Christmas Charlie Brown* (National Tour-2022-2024); Gershwin Productions: *America Girl LIVE* (National Tour), *A Charlie Brown Christmas in Concert* with The Portland Symphony; ZACH Theatre: *Cinderella*, *The Prom*; Tulsa Opera: 2003/2004 Seasons; Casa Mañana Playhouse: *Annie*, *Disney's High School Musical*, *A Christmas Carol* -*The Musical*; Stage

+ Member Stage Directors and Choreographers Society
Continued on Pg. 20



Celebrating 20+ Years of Service
The Worldwide leader of
tax and compliance services.

YOUR HEALTH DESERVES THE SPOTLIGHT



TAILORED CARE FOR EVERY JOURNEY

We believe in providing personalized healthcare that respects who you are. From primary care and hormone therapy to HIV prevention and mental health services, we are here to support your journey to wellness.



Our Services:

- Primary Care
- HIV Treatment & Prevention
- Gender Affirming Hormone Therapy
- Women's Health
- Mental Health Treatment and Therapy
- Aesthetics & Weight Management

Book an Appointment Today!

405-848-0026 • www.DiversityFamilyHealth.com

Oklahoma City

1211 N. Shartel Ave

Norman

329 White Street

Tulsa

1822 E. 15th Street

Lyric Theatre Artistic Staff

One: *I Do, I Do, Are We There Yet?* (World Premiere), *Swing*; Eastman School of Music (3 Seasons); Triad Theatre: *Kids in America*; Colossal Studios: *Family Pirate Adventure*; Adventure Theatre: *James and the Giant Peach* (Helen Hayes Nomination). LOCAL: OKC Philharmonic: 15 years of *A Very Merry Pops*; Reduxion Theatre: *7 Seasons*, *Hair*, *Cabaret*, *Sweeney Todd*, *Romeo and Juliet*; Carpenter Square Theatre: *Importance of Being Earnest*, *Maritius*; Oklahoma Children's Theatre: *To Kill a Mockingbird*; Jewel Box Theatre: *Bus Stop*, *Leading Ladies*, *37 Postcards*, *Nonsense II-The Second Coming*, *Suite Surrender*, *South Pacific*. FILM: *Fingerprints*, *Pearl*, *Agenda*.

FABIAN J. GARCIA (*Lighting Designer*) – is a lighting designer for theatre, dance, opera, and live events, currently serving as the Assistant Professor of Lighting Design at Oklahoma State University. Born in Texas to Mexican immigrants, he proudly incorporates his Mexican American heritage into his creative work. AT LYRIC: *Mary Poppins*, *King of Pongaea* (World Premier), *Concerto* (World Premier), *Distant Thunder* (World Premier), *Ain't Misbehavin'*, *The Play That Goes Wrong*, *Big River: The Adventures of Huckleberry Finn*, *Head Over Heels*, *Master Class*, *Grease*, *Nonsense*, *Denise Lee: Pressure Makes Diamonds*, *Having Our Say*, *Frost/Nixon*, *Curious George: The Golden Meatball*. REGIONAL THEATRE: *Pueblo Revolt* (New Mexico Premier), *You're A Good Man, Charlie Brown*, *Santa Fe Playhouse*; *Ain't Misbehavin'*, Theatre Under The Stars. OTHER THEATRE: *The Pirates of Penzance*, *The Gondoliers*, *Ruddigore*, *Cimarron Opera*; *Coming Home for Christmas*, *Music of Billy Joel*, Oklahoma City Philharmonic; *Lizzie: The Rock Musical*, *Small Mouth Sounds*, Southern Plains Production; *Annie*, *Kinky Boots*, *1776*, Theatre Tulsa. He holds an M.F.A. in Lighting Design from the University of Virginia and a B.A. in Technical Theatre from West Texas A&M University.

JACOB HENRY (*Sound Designer*) – is the assistant professor of Sound Design at Oklahoma City University. He earned his B.A. in Theatre from Texas A&M University – Corpus Christi, and his M.F.A. from Texas Tech University. Jacob taught technical theatre in Pflugerville and Round Rock ISD, and he has worked with such companies as Walt Disney World, Utah Shakespeare Festival, and locally for Lyric Theatre OKC. Henry also produced plays and new works for Two Beards Theatre Company which he founded in Austin.

Henry's design work has been featured at the 2019 Prague Quadrennial, Samuel French's OOB Festival, and the Kennedy Center American College Theatre Festival where Henry was a fellow and National Finalist for the Excellence in Sound Design Award.

AMANDA SCHNAKE (*Properties Designer*) is an Oklahoma City native who began her career in professional theatre in the summer of 2022. After gaining experience as a freelance artist, she is now proudly serving as the Props Manager for Oklahoma City University. AT LYRIC: *Waitress*, *King of Pongaea*, Lyric's *A Christmas Carol*, *Ain't Misbehavin'*, *The Prom*, *The Sound of Music*, *The Rocky Horror Show*, *Kinky Boots*, *Carousel*, *Matilda*. OTHER THEATRE: *What The Constitution Means To Me*, *The Thanksgiving Play*, *Vietgone*, *The Antelope Party*, *The Brothers Size*, *Superstitions*, OKCRep; *The Nutcracker*, OKC Ballet; *Les Misérables School Edition*, *Footloose*, *Merry Wives of Windsor*, *Puffs*, Oklahoma City University.

JOANNE MIDDLETON WEAVER (*Hair/Make-Up Designer*) – began her career in theatre in 1991 at Washington National Opera at the Kennedy Center in DC. Weaver has designed for many Opera companies throughout the US. With LYRIC: *Rodgers & Hammerstein's OKLAHOMA!*, *Beautiful: The Carole King Musical*, *Joseph and the Amazing Technicolor Dreamcoat*, Lyric's *A Christmas Carol*, *Mary Poppins*, *Jersey Boys & Cinderella*, *Ain't Misbehavin'*, *The Prom*, *The Sound of Music*, *Kinky Boots*, *Carousel*, *Matilda*, *Titanic*, *Newsies*, *Singin' in the Rain*, *Hello, Dolly!*. BROADWAY: *The Notebook* (Co-Designer with Oscar Winner Mia Neale). OPERA: *The Life and Times of Malcolm X*, *Ainadamar*, *Central Park 5* with Detroit Opera.

LAUREN WHYTE (*Stage Manager*) – is a senior at Oklahoma City University majoring in Design & Production with an emphasis in Stage Management. Recent work includes *Anything Goes* (Stage Manager) at Oklahoma City University and OKCBallet's *Swan Lake* (Assistant Stage Manager). Over the summer, she had the privilege of working at the Brevard Music Center as an Assistant Production Manager.

LYRIC UNDERSTUDIES

ticket discounts
special events
community

Join Today!



@LyricUnderstudies



Lyric Understudies



LYRIC THEATRE

THELMA GAYLORD ACADEMY



The Thelma Gaylord Academy is a comprehensive training program for beginners through advanced students, including acting, voice, and dance. Scholarships are available to all those in need of financial assistance. If you like what you see today, join us in the spring and it can be you on this same stage!

Scan this code for a full spring brochure:



Spring Production Auditions are January 10

Lyric Thelma Gaylord Academy
(405) 524-9310 x100 and x101 www.ThelmaGaylordAcademy.com

The Playwright

RICHARD O'BRIEN (*Book, Music, Lyrics*) – who was born in 1942, began his life in the world of entertainment in 1965, when, at the age of 23, he rode horses in British-made movies. He had no desire to become a full-time stuntman and, wisely, took himself off to an evening drama school which claimed to adhere to the teaching principles of Stanislavski, Lee Strasberg, Stella Adler and anyone else that had decided to embrace the more 'naturalistic' approach to acting, commonly known as The Method. In 1967, Richard became an ASM and understudy in a musical touring version of *The Barretts of Wimpole Street*, retitled as *Robert and Elizabeth*. He worked backstage in many West End theatres, most notably the Cambridge Theatre at Seven Dials, where, among other duties, he shone a Lime Light upon John Hanson, who at the age of forty-six, may well have been the oldest Student Prince that the world had ever laid eyes upon. In 1969, Richard joined an ensemble group in a joyous production of *Gulliver's Travels* at the Mermaid Theatre. This show was designed and directed by Sean Kenny. The choreographer was a young Japanese Canadian called David Toguri and the following year, Richard auditioned for him once again and joined the cast

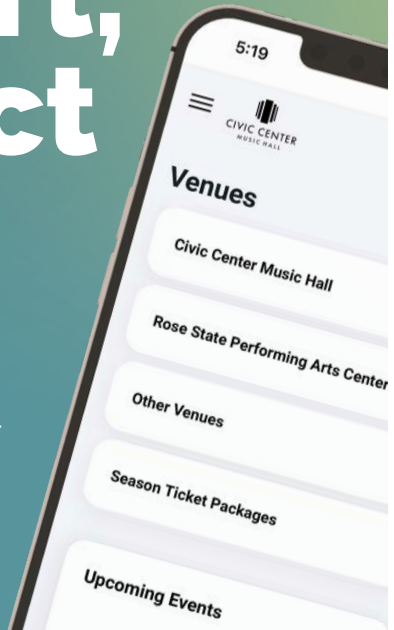
of the British touring production of the American 'hippie' musical *Hair*. After *Hair* came *Jesus Christ Superstar*, which was directed by Jim Sharman. The following year, 1973, Jim cast Richard in a Sam Shepard play at the Royal Court Theatre's *Theatre Upstairs*. It was here that he met Richard Hartley, his music partner of more than 40 years. *The Rocky Horror Show* opened in July of the same year and, slowly but surely, became the biggest cult musical of all time. Other highlights of Richard's career are, of course, *The Crystal Maze*, a game show that warmed the autumn nights for Channel 4. The Child Catcher in the first stage production of *Chitty Chitty Bang Bang*. Performing for the Queen in the gardens of Buckingham Palace upon Her Majesty's 80th birthday and playing Fagin in a New Zealand production of *Oliver!*. In a career that has spanned 50 years, Richard has acted with some of the biggest and best known names in the industry and, lately, he has won over a new and younger crowd of fans as the voice of Lawrence Fletcher, the father of *Phineas and Ferb*, in the Disney cartoon series of the same name. Although now in his late seventies, Richard still refuses to make eye contact with the grim reaper.

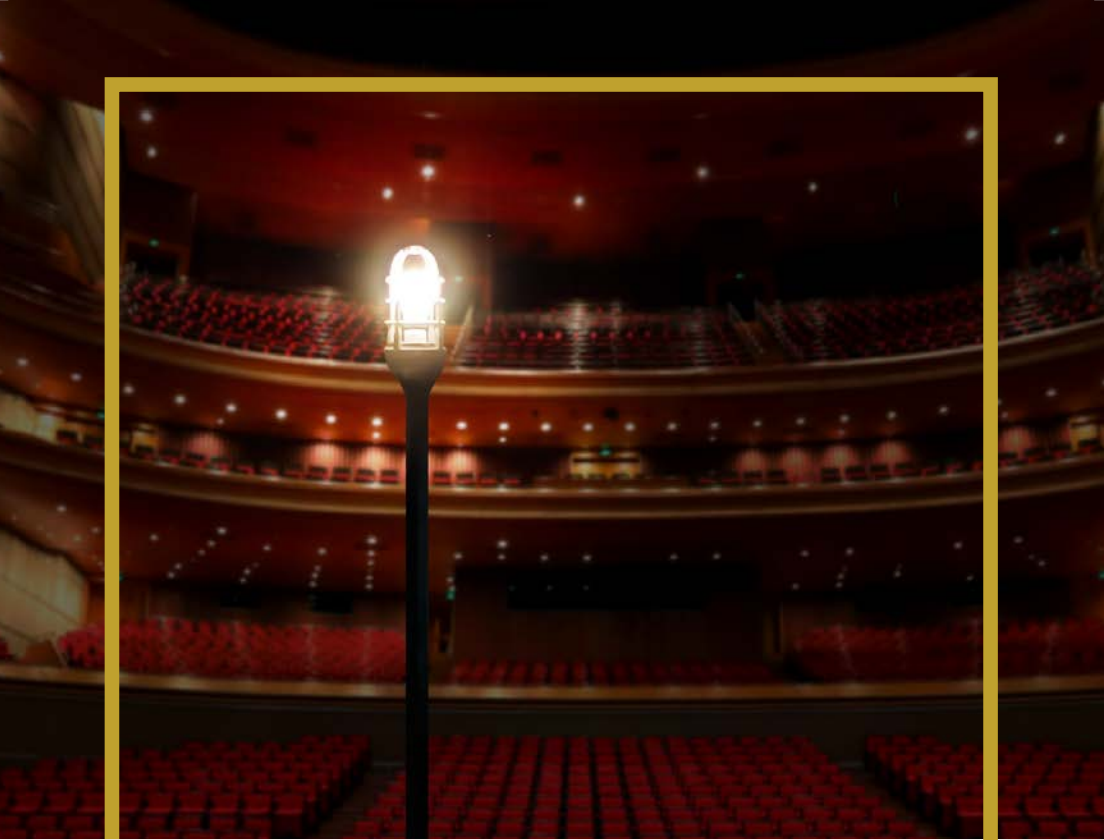
Buy Smart, Buy Direct

Guaranteed tickets,
every time.

Civic Center Music Hall
Rose State Performing Arts Center
Lyric at the Plaza

Visit okcciviccenter.venue.net





Innovating Performance

To describe INSURICA as “award winning” would be a dramatic understatement. INSURICA has been recognized with more national awards than ever before, and we believe it is because our industry is recognizing INSURICA’s leadership and the way we are modernizing insurance. At INSURICA, we pride ourselves on **INNOVATION**. We have committed to transform our industry by using data as a weapon, and to serve our customers today and tomorrow with services and expertise. INSURICA is a Best In Class broker of insurance, and we strive every day to help our customers become Best In Class in their respective industries.

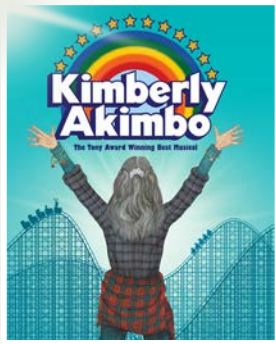


We Specialize in You | [INSURICA.com](https://www.insurica.com)



10th ANNIVERSARY

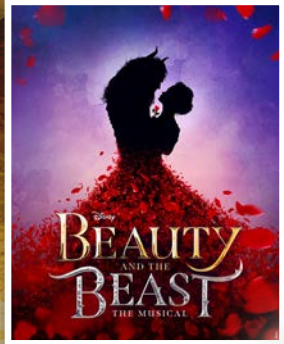
2025-2026 Season Sponsored by paycom



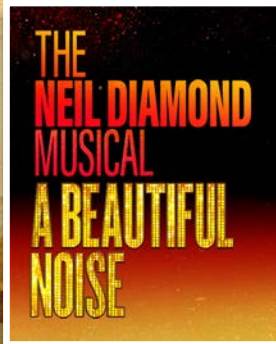
SEP 9-14, 2025



NOV 18-23, 2025



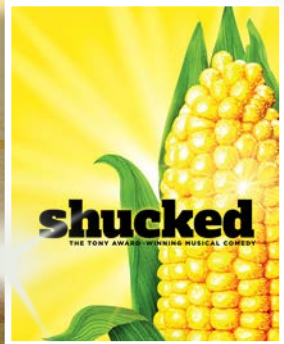
JAN 20-25, 2026



MAR 3-8, 2026



APR 7-12, 2026

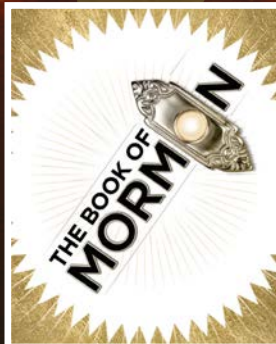


MAY 12-17, 2026

SEASON SPECIAL!



MAY 19-24, 2026



OCT 10-12, 2025

SUBSCRIBE ONLINE AT OKCBROADWAY.COM

Lyric Theatre Leadership

MICHAEL BARON⁺ (*Producing Artistic Director & Cinderella Co-Director*) – At Lyric, he has directed, *Rodgers & Hammerstein's Oklahoma!*, *Joseph and the Amazing Technicolor Dreamcoat*, *Cinderella* (Co-Direction with Dr. Brian Cheslik, Artistic Director of Deaf Austin Theatre), *King of Pangaea*, *Concerto* (world premiere), *The Prom*, *Big River*, *Carousel*, *Head Over Heels*, *Master Class*, *Grease*, *Lyric Kids' Clubhouse*, *Frost/Nixon*, *Titanic*, *Singin' in the Rain*, *Bright Star*, *When We're Gone* (world premiere), *Disney's Freaky Friday*, *Fun Home*, *Disney's When You Wish, I Am My Own Wife*, *Assassins*, *Fiddler on the Roof*, *Dreamgirls*, *Mann... And Wife* (world premiere), *Bernice Bobs Her Hair* (world premiere), *Big Fish* with David Elder and Tony-nominee Emily Skinner, *Oklahoma!*, *An Inspector Calls*, *A Little Night Music* with Tony-nominee Dee Hoty, *Les Misérables*, *Triangle*, *Tarzan*, *The Glass Menagerie*, *The Mystery of Irma Vep*, *Call Me Madam* with Tony-winner Beth Leavel, *Spring Awakening*, *Ragtime*, *Oliver!*, *Boeing Boeing*, *Always... Patsy Cline*, *The Rocky Horror Show* and the annual production of Lyric's *A Christmas Carol* (also adapted). Baron has directed over 120 productions at theaters across the country, including *Tosca* (OKC Philharmonic) *Mendelssohn's Elijah* (Canterbury Voices) as well as co-directing with Sandra Mae Frank an ASL/Spoken English production of *The Music Man* at The Olney Theatre in Washington, D.C., and the current production of *A Christmas Carol* at Ford's Theatre in Washington, D.C. Other regional directing highlights include ZACH Theatre: *Peter and the Starcatcher*; Signature Theatre: *The Little Dog Laughed*, *Songs for a New World* starring Tony-winner Alice Ripley, Tony-nominee Brian D'Arcy James, Emmy-nominee Titus Burgess, and music direction by Jason Robert Brown; Adventure Theatre: *Big Nate* (world premiere); Goodspeed Musicals: *Meet John Doe*, Trinity Repertory Company: *The School for Scandal*, *La Mama: The Whore of Sheridan Square* (wrote and directed, published in anthology *Plays and Playwrights* 2006). NEA and Poetry Foundation 2010-2025: Poetry Out Loud National Competition Finals. Teaching: American University, Brown University, Holy Cross College, Oklahoma City University, and Rhode Island College. Training: B.A. in Theatre Arts, Wake Forest University; M.F.A. in Directing, Trinity Repertory Conservatory. Michael served as the Associate Director of Signature Theatre in Arlington, Virginia-winner of the 2009 Regional Theatre Tony Award. Michael received the 2016 Oklahoma Governor's Arts Award, a 2016 special award from Oklahoma City Mayor's Committee on Disabilities Concerns, the 2021 Yad B'Yad, Hand in Hand Award from the Jewish Federation of OKC and the 2016 and 2022 Helen Hayes Award for Outstanding Direction of a Musical. He is a member of the Rotary Club of Oklahoma City and an emeritus board member for the National Alliance for Musical Theatre.

JIM REYNOLDS (*Managing Director*) – is now in his ninth year at Lyric Theatre. As a career professional in theatre management, he has extensive experience in marketing, public relations, sales, project management, strategic planning, fundraising, and patron loyalty strategies. Prior to Oklahoma City, he was the Director of Marketing and Public Relations at ZACH Theatre – the leading regional theatre in Austin, TX. During his 25-year tenure he played an integral role in growing ZACH's annual budget from \$550,000 to \$8,000,000 and opening two state-of-the-art theatre facilities. Prior to that, he was the Sales Director at Dallas Theater Center, helmed by Adrian Hall and Peter Donnelly – both acclaimed leaders in the first and second generation of the American regional theater movement. Fresh from the University of South Carolina, he served as Patron Manager and Production Business Manager at the Alliance Theatre/Atlanta Children's Theatre, the Southeast's leading regional theatre and Tony Award-Winner. Jim has served as a civic volunteer with several non-profit organizations and served as the Board President of the Plaza District Business Association in 2021.

ASHLEY WELLS⁺ (*Executive Producer*) – celebrates 22 years with Lyric Theatre of Oklahoma and was recently honored as the recipient of the Arts in Education Governor's Arts Award. She is on the Board of the National Alliance for Musical Theatre and Chairs the Membership Committee. AT LYRIC: *Beautiful: The Carole King Musical*, *Waitress*, *The Play That Goes Wrong*, *Kinky Boots* (Director), *Matilda* (Director), *Nunsense*, *Disney's Newsies* (Director), *Hello, Dolly!* (Director), *Junie B. Jones* (Director), *Rock of Ages* (Director), *The Wizard of Oz* (Director), *The Fantasticks* (Director/Choreographer), *Bernice Bobs Her Hair* (Choreographer), *Billy Elliot* (Director), *Pageant* (Director), *Monty Python's Spamalot* (Director), *Les Misérables* (Choreographer), *Triangle: A New Musical* (Associate Director), *The Odd Couple* (Director), *Big River* (Choreographer), *Tarzan* (Choreographer), *Some Enchanted Evening* (Director), *Sweet Charity* (Director) with Tony Award-winner Billy Porter, *Spring Awakening* (Choreographer), *Lyric's A Christmas Carol* (Choreographer), *Oliver!* (Choreographer), *The Rocky Horror Show* (Choreographer), *Urinetown: The Musical* (Co-choreographer), *Jesus Christ Superstar* (Choreographer), *Oklahoma!* (Co-choreographer), *Hello, Dolly!* (Co-choreographer), *Cabaret* (Choreographer/Ensemble), *Chicago* (Choreographer/Merry Murderess). REGIONAL THEATRE: *Waitress*, Dallas Theatre Center; *The Play That Goes Wrong*, Oklahoma City University (Director); *Phantom of the Opera*, North Shore Music Theatre (Ensemble); *Evita* (Ensemble), *Brigadoon* (Jean), *The Music Man*, Music Theatre of Wichita (Zaneeta Shin); *La Cage Aux Folles*, Casa Mañana (Anne). BROADWAY AND NATIONAL TOUR: *Hello, Dolly!*



Member FDIC

Playing our part to
enrich our local arts.

Proud to support Lyric Theatre

 **MIDFIRST BANK**
True to you.

midfirst.com

Now more than ever,
trusted partner
has a nice ring to it.

Year after year, **Argent** earns the trust of
more estate attorneys and their clients in
Oklahoma and across the nation. It would be
a privilege to earn yours.



Trust Ingrained.

ArgentTrustOK.com | (405) 848-8899



Jay D. Parks & Associates

Certified Public Accountants

Jay D. Parks
CPA, CPLC

Phone: (405) 341-7044
Fax: (405) 341-1482
jay@parkscpa.com

2801 S. Bryant
Edmond, OK 73013
parkscpa.com

Lyric Theatre Staff

MICHAEL BARON.....	Producing Artistic Director
JIM REYNOLDS.....	Managing Director
ASHLEY WELLS.....	Executive Producer
MATTHEW SIPRESS.....	Production/Company Manager
BAILEY MAXWELL.....	Company Manager/Casting Coordinator
MATTHEW ALVIN BROWN.....	Production & Rental Associate
LAUREN HATHCOAT.....	Guest Services/Facilities Manager
CHARLIE LUDDEN.....	Director of Development & Capital Campaign
MIA SHERLOCK.....	Special Programs & Events Associate
SYDNEY LAHODNY.....	Individual Campaign Manager
CAPRIE GORDON.....	Development/Marketing Intern
SAM DURBIN.....	Director of Marketing and Public Relations
MIKI GALLOWAY.....	Marketing Manager
LONDON RUSHING.....	Patron Services Manager
RYLEE TRENT.....	Box Office Associate
ROZZ GRIGSBY.....	Director of Education
SYDNEY BRUNER.....	Education Associate/Interactive Coordinator
LEIA J. VANLUE.....	Director of Finance
ANGELA G. DAMBOLD.....	Payroll & Benefits Administrator
DESIREE NIFONG.....	Bookkeeper
JEFFREY MEEK.....	Costume Director
DAYNA BROWN.....	Costume Shop Associate/Academy Designer
ISABEL DELGADO.....	Lighting Supervisor/Lead Electrician
STEVEN GILLMORE.....	Technical Director
JOSIE WALLEY.....	Scene Shop Manager
JAMES TABOR.....	Lead Carpenter
LUKE EDDY.....	Carpenter
RYAN ACKERMAN.....	Carpenter
EMORIE MANSUR.....	Charge Artist

SHOW BIZ DANCEWEAR

4427 NW 63rd St, OKC, OK 73116
405-840-4406
SHOWBIZDANCEWEARBOUTIQUE.COM



Trained Pros to keep you on your toes with the best in bodywear and shoes!

Discover *the Unique*



For those who seek an exceptional **home & life.**



BRITTA MCAFEE THRIFT, JD
Global Real Estate Advisor
405.821.2313 | brittathrift.sagesir.com

THE ROCKY HORROR SHOW Production Staff

Olivia Benson, Brielle Norlie, Kelsi Seiter	Assistant Stage Managers
Shannon Richey*	Stage Management Mentor
Lyn Cramer	Intimacy Coordinator
Matthew Alvin Brown	Props Coordinator
Josie Walley	Deck Supervisor
Noah Reed	Audio Engineer
Skylar Selby	Light Board Operator
James Zumwalt, and C. Augustus Mathews	Lighting Techs/Spot Operators
Michael Jobe	A2/Swing
Bethany Woemmel	Wardrobe Supervisor
Alexis Glass	Wardrobe Crew
Bawna Gfellar	Wig Crew
Miki Galloway	Playbill Editor

* Member of Actors' Equity Association

Lyric Theatre's
Free Tickets for Students
Initiative!

Pictured: Cast of *Grease* with amazing technical assistance and stage design. Jeffery Hest, Broadway Cast Show

Together we served over
1,000
 students this summer

Thank You
 to our donors,
 sponsors,
 and Partner
 Organizations
 who made it
 possible!

LYRIC THEATRE OF OKLAHOMA Summer at the Civic 2025

Announcing The 2025-2026 UNIVERSITY THEATRE SEASON

**OKLAHOMA
FESTIVAL BALLET**
 September 26 -28

**THE TURN OF
THE SCREW**
 October 16 - 19

**MEL BROOKS' YOUNG
FRANKENSTEIN**
 November 7 - 9

**A CHRISTMAS
CAROL**
 December 5 -14

**YOUNG
CHOREOGRAPHERS'
SHOWCASE**
 January 30 - February 1

**LA CLEMENZA
DI TITO**
 February 19 - 22

COMPANY
 March 6 - 8

THE BIRDS
 April 3 - 12

**CONTEMPORARY
DANCE OKLAHOMA**
 May 1 - 3



WEITZENHOFER FAMILY COLLEGE OF FINE ARTS
UNIVERSITY THEATRE
 The UNIVERSITY of OKLAHOMA

(405) 325-4101 | theatre.ou.edu



Oklahoma Arts Council

Leading, cultivating, and amplifying the transformative power of the arts for all Oklahomans and their communities.

Go to arts.ok.gov to learn how our grants and programs cultivate and support the arts in communities and schools across Oklahoma.

The Oklahoma Arts Council is an agency of state government.



Lyric Theatre Individual Donors

Lyric extends its appreciation to all of our generous donors. This list reflects contributions made June 1, 2024 to September 1, 2025 from individuals and family foundations in support of Lyric's programs and activities.

To join Lyric's family of supporters and enjoy the terrific benefits, please contact

Sydney Lahodny, at (405) 524-9310 ext. 203 or email Sydney@LyricTheatreOKC.org for more information.

EXECUTIVE

(\$5,000+)

Ole & Anne Andreassen
John & Margaret Biggs
Ed & Matilda Clements
Randy & Melinda Compton
Ronna & Lawrence Davis
Ellen & Tim Fleming
Dr. Eric & Shannon Friedman
Mark & Beverly Funke
Anthony & Teri Gasaway
Family Charitable Fund
Janet & John Hudson
Keith & Debbie Long
Mr. & Mrs. Marty Lopez
Paula Love
Love's Travel Stops &
Country Stores, Inc.
Ellen & Andrew Spiropoulos
Paula & Carl Stover
Patricia & Ben Williams
John B. Williford
Kevin & Monica Wittrock
The Dr. Elliott & Pamela Schwartz
AEIOU Foundation
Carl & Beth Shortt
Stride Bank
Susan & Mike Turpen
Amis Wittrock Family Fund

DIRECTOR

(\$2,500-\$4,999)

Patricia C. Austin
Dr. & Mrs. William L. Beasley
Sharlene S. Branham
Phil & Cathy Busey
Dr. Pramod K. Chetty
Terri Cooper
Dr. Michael & Carolyn Crawford
Brad & Celine Ferguson
Paul Garrett
Jan & Ken Goodin
Drs. Richard & Marlene Greyson
Richard R. Horton
Barbara & Mason Jett, M.D.
Brian Greenwood & Darilyn Jett
Peggy Kates
The Honorable & Mrs. Frank Keating
John & Robin Klaser
Ryan & Carrie Leonard
John & Jeannie Lopez
Lori & David Mathena
Jean McLaughlin

Drs. Charles & Jeanne Morgan
Jacquelyn Ford & Jeremy Norwood
George & Teresa Rhame
Pooja Singhal, M.D.
Gregory Smith
Brad & Angela Steele
Carolyn T. Zachritz

CHOREOGRAPHER

(\$1,500-\$2,499)

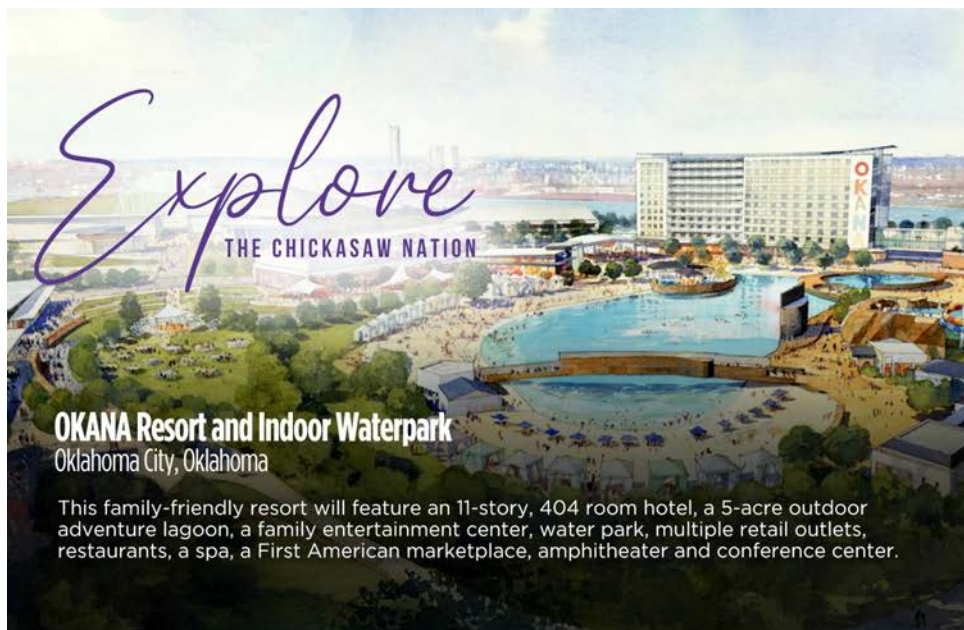
J. Angela Ables
Leigh Ann & Paul Albers
Carol & Kerry Alexander
Dr. & Mrs. Dewayne Andrews
Scott Bartel
Sherry K. Barton
Dustin & Sarah Bashaw
Elizabeth & Richard Buschelman
Elizabeth Carr
Dr. William W. Cook
Mrs. Anthony Czerwinski
Karen Delaney
Tony & Pam Dela Vega
Drew & Linda Edmondson
Vicki Gourley
Jim & Miranda Grant
Terry & Darlene Haynes
Vaughn & Theresa Holcer
Betsy Jett-Gaske
Mr. Farooq S. Karim
John & Jane Kenney
Janna & Josh Koehn
Jake & Barbara Langthorn
Ann Larson
Doug & Ginny Lawrence
Rob & Karen Luke
Mr. & Mrs. Robert S. McKown
Brian & Charlotte Mitchell
Pie Junkie
Judy & Richard Riggs
Leigh Roberts
Megan Rooney
Mary Deane Streich
Hogan Taylor
Billie Thrash
Carolyn & Bob Windsor
Meredith & Mike Wolfe
Carol Wright

VIP CLUB

(\$1,000-\$1,499)

Carol Abel
Anonymous

Roddy & Angel Bates
Alexandra Towler-Bliss
Glenn & Debra Blumstein
Dr. Kyle D. Brotherton
Greg & Barbara Cable
Center for Employment Law
Corner Energy/Linda Whittington
Brad Curtis
Alice Dahlgren
Joel Dixon
Susan D. & Alton L. Dobbins
Richard & Elizabeth Dobes
David W. Echols
Sid & Toni Ellington
Jim & Christy Everest
Linda Ewerth
Mari & Arnold Fagin
Michael & Deborah Felice
Elizabeth A. Fleet
Kay Floyd
Lori & Bennett Fuller
Darleene A. Harris
Sammie & Lorraine Harris
Richard Hicks
Henry and Laura Hood
Tanner Jeffers
Carol & Michael Johnson
Melissa Smith-Johnson
& Barry Johnson
Sharon & Charles Johnson
Amanda & Rusty LaForge
Jason Ledlow
Lisa & Ray Lees
Robin J. Lister
John & Patricia Lopez
Maccini Construction Company
Justin & Lindsey Manning
MAP Energy
Jan & Brad Marion
Steve Mason/Cardinal
Engineering, Inc.
Mari Cook Medley
Larry McClellin
Mark & Lynn Neumeister
Dr. & Mrs. W. H. Oehlert
Richard & Gayle Parry
John Plonkey
Marcy & Louis Price
Mr. H.E. Rainbolt
Colin Raley
Dale & Phyllis Regier
Dr. Kathryn Reilly
Gary & Beverly Rosenhamer



Explore

THE CHICKASAW NATION

OKANA Resort and Indoor Waterpark

Oklahoma City, Oklahoma

This family-friendly resort will feature an 11-story, 404 room hotel, a 5-acre outdoor adventure lagoon, a family entertainment center, water park, multiple retail outlets, restaurants, a spa, a First American marketplace, amphitheater and conference center.



Chickasaw Cultural Center

Sulphur, Oklahoma

Visit the Chickasaw Cultural Center and share in Chickasaw culture, language and history. Experience dynamic performances, demonstrations, collections and exhibits at one of the most extensive tribal cultural centers in the United States.



McSwain Theatre

Ada, Oklahoma

The McSwain Theatre is a 560-seat former cinema, and present day theater and music venue. The McSwain Theatre is one of Oklahoma's premiere live entertainment venues, with performances featuring all types of music including country, rock, gospel, oldies and more!



Exhibit C Gallery

Oklahoma City, Oklahoma

Visitors will find a retail shop complete with hand-crafted Chickasaw jewelry, pottery, paintings and clothing. Other retail items include the full line of Bedré Fine Chocolate®, books from Chickasaw Press as well as Chickasaw Country-branded items.



Bedré Fine Chocolate®

Davis, Oklahoma

Today, the Chickasaw Nation is the only modern First American tribe to produce gourmet chocolate for your culinary pleasure. Bedré Fine Chocolate® creates gift-worthy premium chocolates for any occasion.



the
Chickasaw
Nation

BILL ANOATUBBY, GOVERNOR
CHICKASAW.NET



Lyric Theatre Individual Donors

Erik Salazar & Christopher Lloyd
JoAnn Schaub
Stephen & Mary Ann Schmitt
Donna R. Smith
Jonathan Staley
Stephanie & J.D. Stewart
Danny & Jeannie Stith
Britta Thrift
Theresa A. & Dr. Virgil Todd
Scott & Mary Ann Tomlinson
Sherry & Lonny Towell
John Wall
John & Carol Wall
Ron Walters Homes
Dwayne Webb & Larry D. Buss
Lisa & Mike Wilkinson
Geoff & Lisa Willis

LEADING ROLE

(\$750-\$999)

Jane & Paul D. Austin
Dr. Jack & Ruth Beller
Anna Brown
Linda Cavanaugh & William Clark
Ray Cloer
Vicki & Richard Daniel
Cindy DiTommaso
Kathryn Dooley
David & Rurie Dobson
Bill Durrett
Sandra & John Fanelli
Buck & Gladys Feng
Lynna K. & Heather Geis
Debby & Jim Goodman
Tamela & Stephen Hamilton
Billy Grayson & Joe Highfill
Thomas & Rebecca Hill
Win & Anne Holbrook
Dr. Peggy Hudson & Paul Rodgers
Terese & Quinn Irwin
Diana & Danny Kennedy
Debbie Koehn
Terry & Amanda Kordeliski
JJ & Nikki Kuhn
Gwin Faulconer-Lippert &
Rick Allen Lippert
Betty Bellis Mankin
Brenda & Tom McDaniel
Scott & Michelle McLaws
Marilyn & Bud Meade
Andria Medina
Darla Morley
Tami Murphy Landscape
Designs, Inc.
Sean & Anne Nelson
Edward Oliver
Charles Oppenheim
Hemangi Pakala

Jennifer Patterson
Greg & Janet Peery
Julie Riddell
Lil Ross
Michele & Douglas Samuels
Darlene S. Wallace
Kari Watkins
Gary Williamson
Bill Swigert & Shane Wilson
Gabe Woolery
Tonya York

CIRCLE OF STARS

(\$500-\$749)

Rhiannon Abila
Ryan Ackerman
Carol & Mark Aldridge
Anonymous
Frank Wise & Anita Armstrong
John Arnold
Teresa Atkinson
Steve & Kay Ball
Amy & Roy Bankhead
Steve & Cheryl Black
Andrew & Amber Blakeman
Richard & Vicki Bogert
Jeffrey Bonney
Linda Booker
Beverly Brown
F.W. Pete & Barbara Brown
Jerry Brown
Jim Bob & Rachele Browning
Frank Bruno
Ellis Cain
Rick Cain
CEC Corporation
Betty Ann Cole
Marc & Sally Cortez
Thomas Cotrone
Kathryn Curry
Jim & Patricia Dennis
Kelley Dowd
Kevin Dunnington
Dennis & Kay Emery
William G. Emrich
Tracy Evans
Kathy & Jim Frankenfield
Linda D. Garrett
Barre Griffith
Kim Haddad
Nancy J. Hasley
Rita D. Hejny
Cynthia Henderson-Dimauro
Rick & Jani Hill
Richard & Cindy Homsey
Christina & Don Horvat
Jamarson LLC
John Koons

Nancy Kruckeberg
Debra Logan & Darla Hobbs
The Kerr Foundation, Inc.
Stephanie Lewis
Shannon & Michael Love
James Mack
Dick & Patti Marshall
Mrs. Dianna Masters
Jeffrey J. & Theresa McDougall
William & Loa McNeese
Nora Medley
Dr. Harold Mortimer
Matt Nail
Norick Family
Norick Investment Company
June Ocker
Oklahoma Allergy & Asthma Clinic
Paul Pearson
Ric & Jennie Penner
Jack Ransom
John Richardson
Mary Robbins
James E. Rushing
Brent Saffell
Phil & Avis Scaramucci
Cindi M. Shelby
Kim & Carol Shoemaker
Jay Smith
Tory & Michelle Smith
Colby & Martha Stone
Frank Svoboda
Jennifer Tetnowski
Adam Thomas
Mr. & Mrs. David L. Thompson
John & Louise Thompson
Jackie & Dennis Trepagnier
Savanah Turmel
Troy & Jennifer VanBrunt
Kathy Vieth
Evan & Beth Vincent
Charles Webster
Ashley Weedn
Linda & Dick Wegener
Larry & Leah Westmoreland
John Michael Williams
Diane Wittrock-Hardin
William & Lissa Wright
Melissa Yeargain
Karen Youngblood
Troy Zaikis

SUPPORTING ROLE

(\$250-\$499)

Aline & Roy Brown
Michael Cawley
Barbara DeMaio
Robert Dicket
Steve & Susan Donchin

Flight

YOUR
STANDING
OVATION
STARTS HERE.

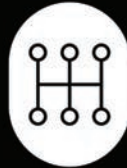
Elevate your business with
full-service marketing.

405.429.7575 | WWW.FLIGHT.AGENCY
HELLO@FLIGHT.AGENCY



KamsKookery.com
Submit an Official Inquiry

THANK YOU
TO OUR
DONOR
CATERING
SPONSOR



SOCIAL
CAPITAL



BEST ROOFTOP PATIO IN OKC
108 BEERS ON TAP
GREAT FOR LARGE PARTIES
DOG FRIENDLY

517 S. HUDSON AVE
ACROSS FROM SCISSORTAIL PARK



Lyric Theatre Individual Donors

Kristy K. Ehlers, Ph.D.
 Glenda Eisenhour
 Donor Designated Fund
 Randi Ellefson
 James & Jennifer Hinkle
 Mr. & Mrs. Carol E. Johnson
 MaryAnn Johnson
 Jennifer Jones
 Stephen A. Ladner
 Rick & Ludinia Lahodny
 Vicki Lavastida
 Cavett & Ashley Lee
 Seth Lewis
 Mary E. Martin, D.D.S.
 Mike & Pam Mowry
 Carol Norman
 Hannah Nowlin
 Max Patterson
 Dr. Daniel Snell &
 Dr. Katie Barwick-Snell
 Ben & Anny Stapp
 Dr. Eugene & Mrs. Donna Steinberg
 Douglas & Susan Stussi
 Tom A. Thomas, Jr. Fund
 Paul & Barbara Weigl
 Ryan & Tessa Wicks
 Anne W. Workman

CHORUS

(\$100-\$249)
 Molly Aittaniemi
 Anonymous
 Mary Ann Allred
 Scott & Catherine Anderson
 Lonnie & Cindy Bartel
 Kerri Beasley
 Miss Lauren Beausoleil
 Rachel Benbrook
 Mark Bennett
 Terry & Janet Bergner
 Rev. Stephen Bird
 Pamela Blevins
 Pamela Bloustine
 Jay Bond
 David & Sherri Boyd
 Jane Bronnenberg
 Jodi Burns
 Karen Buzzard
 Belinda Callison
 Juan Camerena
 Rachel Cannon
 Christine Carpenter
 Sunny Cearley
 Rosemary Cinnamon
 Mary Clark
 Susan A. Clark
 Casey Cornett
 LaTasha & Jeff Craig

Margaret Cuthbert
 Micah Davis
 Tary Davis
 Brenna Dixon
 Bill Dutcher
 Melody Duty
 Jessica Earley
 Sarah & Judd Fisher
 Mark Fitch
 Thomas Fleming
 Rachael Geiger
 Cassoty Gies
 Emilie Golden
 Robert M. Goldman
 Ana Gomez
 Arlen Goodyear
 Katie Rose-Gorton &
 Henry Gorton
 Neil & Teri Gray
 Heather Greis
 Jenny Hales
 John & Laura Hart
 Patricia & Michael Hensley
 Mary & Karl Hirsch
 Jeanne Anne Hubbard
 Jesse & Arlene Hunter
 Meg & Frank Ille
 Marsha Ingersoll
 Dr. Karen & Larry Jennings
 Mike Korenblit
 Mike Knedler
 Blake & Allison Lawrence
 Kristi Leonard
 Kay B. Lewis
 Alexa Lienhard
 Joseph Longwell
 Lance McDaniel
 Wes & Judy Morrison
 Leslie Coale-Mossman &
 Sean Mossman
 Walt Myrick
 Linda & Xavier Neira
 Seth Paxton
 Richard Pingrey
 Emily Poppe
 Kathryn Potts
 Steve Powell
 Natt & Cherish Ralls
 Gary & Judy Ransom
 Roy & Julie Rindler
 Dr. & Mrs. Michael Fred Robinson
 Kim Rollins
 Janet & Arthur Rus
 Jerrod Shouse
 Michele Simon
 Ashutosh Singh
 Shauna Sneden
 Grant & Amanda Soderberg

John Spencer
 Jerry & Karen Stephens
 Jim & Sharon Strate
 Dax Strickland
 Sara & Kyle Sweet
 Emily Tate
 Dr. & Mrs. Kenneth G. Thompson
 Nancy Trnka
 Winnifred Walden
 Steph Williams
 Mary & Andrea Williams
 Wiley & Janet Williams
 Brittney & Jason Wycoff
 Karen Youmans

IN HONOR & MEMORIAL DONATIONS

In Memory of Bobby Burbridge Lane
 Paula & Carl Stover

In Memory of Phyllis Sandmann
 Paula & Carl Stover

In Memory of Mersh Greenberg
 Bonnie Greenberg

In Memory of Elizabeth Kathleen Garrett Willard
 Paul Garrett

In Memory of John Abston
 Paula & Carl Stover

In Honor of Ellen Fleming
 The O'Connor Family Foundation

In Honor of Monica Wittrock
 Diane Hardin

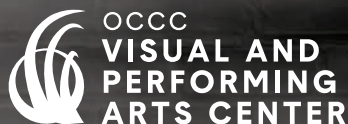
In Honor of Randy & Melinda Compton
 Greg & Pam Johnson

In Honor of Randy & Melinda Compton
 Paul Garrett

In Honor of Dr. Eric Friedman
 OK Spine Hospital

**SNAP THIS QR CODE
 TO ADD YOUR NAME
 TO LYRIC'S LIST OF
 BELOVED DONORS!**





25 / 26

PERFORMING ARTS SERIES



**WEDNESDAY,
OCTOBER 22, 2025**



**THURSDAY,
NOVEMBER 13, 2025**



**TUESDAY,
JANUARY 13, 2026**



**THURSDAY,
APRIL 23, 2026**



**FIND SHOW
INFORMATION HERE:**
occc.edu/tickets

Lyric Theatre Board of Directors

EXECUTIVE COMMITTEE

DR. ERIC FRIEDMAN	<i>President</i>
ELLEN SPIROPOULOS	<i>President-Elect</i>
MONICA WITTRICK	<i>Immediate Past President</i>
LORI MATHENA	<i>Secretary</i>
CARRIE LEONARD	<i>Vice President of Development</i>
BLAKE LAWRENCE	<i>Vice President of Education</i>
JIM GRANT	<i>Vice President of Facilities</i>
MEGAN ROONEY	<i>Co-Vice President of Finance</i>
MATT NAIL	<i>Co-Vice President of Finance</i>
JJ KUHN	<i>Vice President of Marketing</i>
SCOTT BARTEL	<i>Vice President of Governance</i>
CAROL RINGROSE-ALEXANDER	<i>Member-at-Large</i>
ELLEN FLEMING	<i>Member-at-Large</i>
BRAD FERGUSON	<i>Member-at-Large</i>

BOARD MEMBERS

Rachel Benbrook	Alicia Ortwein
Payton Bell	Richard Riggs
Olivia Cassil	Gary Rosenhamer
Edward Clements	Pam Shanklin
David Dobson	Carl Shortt
Toni Ellington	Dr. Pooja Singhal, M.D.
Kay Floyd	Brad Steele
Brenda Hernández	Britta Thrift
Janet Hudson	Dr. Patricia Williams, M.D.
Rachel Jamieson	Meredith Wolfe
Farooq Karim	Tonya York
Christopher Lloyd	Emily Yowell
Paula Love	
Robert S. McKown	LAPS Co-Chairs
Scott McLaws	Kristin Goodale
Sarah Moore	Cassie Alexander

EMERITUS BOARD MEMBERS

J. Angela Ables	Dee Hessel	Keith Long
Patricia Austin	L. Win Holbrook	Paula Stover
Gail K. Beals	Richard R. Horton	Mary Deane Streich
Randy Compton	Barbara Jett	Jon Trudgeon
Dr. David Flesher, M.D.	Ginny Lawrence	Mike Turpen, Esq.
Linda Garrett	Robin J. Lister	

ST. LUKE'S METHODIST CHURCH

POTEET THEATRE

2025-2026 SHOWS

THE SECRET GARDEN

OCTOBER 10 - 19, 2025

THE CURIOUS INCIDENT OF THE DOG IN THE NIGHT-TIME



FEBRUARY 20 - MARCH 1, 2026

SHREK The Musical

MAY 1 - 10, 2026



SEASON TICKETS

\$120 - Adults

\$100 - Senior (55+)

\$50 - Children (12 and under)

Scan the QR Code to learn
more about Season Tickets.



222 N.W. 15th Street, OKC, 73103 | stlukesokc.org/poteet

Lyric Theatre Season Sponsors



the
**Chickasaw
Nation**

SEASON SPONSOR



LYRIC'S "A CHRISTMAS CAROL"
& ARTS OUTREACH TITLE SPONSOR



Continental
RESOURCES

THE GREAT AMERICAN
MUSICAL SPONSOR



LYRIC'S "FAMILY FAVORITE
MUSICAL" SPONSOR



NATIONAL
ENDOWMENT for the **ARTS**
arts.gov



"THE ROCKY HORROR SHOW" SPONSORS

Steve & Lisa Mason

Dusty Gilpin

FOUNDATION & MAJOR SEASON SUPPORT



E.L. and Thelma Gaylord
FOUNDATION



IN-KIND & OTHER SEASON SUPPORT



okcFRIDAY



EDUCATION & ARTS OUTREACH SUPPORT

The Dr. Elliott & Pam Schwartz AEIOU Foundation

Devon Energy Corporation • Allied Arts Educational Outreach Program • Oklahoma Arts Council
Globe Life And Accident Insurance Company • The McGee Foundation • Siloam Lodge #276

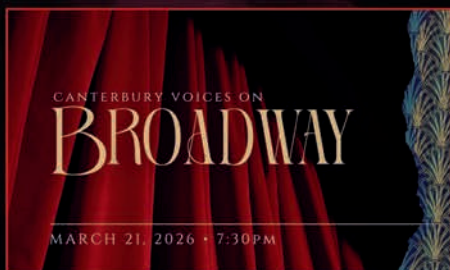
SPECIAL THANKS

Walnut Gardens Apartments • Scissortail Interpreting, LLC • Toast & Coffee • Blue Note Lounge

And, to the following organizations who match the gifts of their employees: Devon Energy, AT&T, Bank of America, Boeing, MAP Energy, The Coca-Cola Company, Dell, E.L. & Thelma Gaylord Foundation, Inasmuch Foundation, and Kimray.

25 26

SEASON
A TAPESTRY OF SOUND



DR. JULIE YU
Artistic Director



CANTERBURY
VOICES

**BECOME A
SEASON
SUBSCRIBER
AND SAVE!**

**SUBSCRIPTIONS
START AT
JUST \$45**

**CALL
(405) 232-7464**

CANTERBURYOKC.COM



This holiday season promises to captivate audiences like never before, with an interactive experience including original costumes, breathtaking sets, and festive music. Devon is thrilled to share this beloved tale with our friends, families, and community once again.







LYRIC THEATRE OF OKLAHOMA **HOLIDAY THEATRE TOUR** DEC 7-11, 2025

 **5 Days / 4 Nights at the InterContinental Times Square**

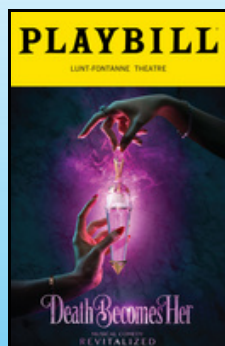
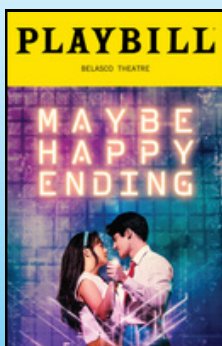
 **Radio City Christmas Spectacular**

 **Museum of Broadway Tour**

 **Radio City Music Hall Tour and Lincoln Center Tour**

 **3 Broadway Shows**

 **...plus so much more!**



\$4,970 PER PERSON

\$500 GROUP AIRFARE

\$1,195 SINGLE SUPPLEMENT



SCAN HERE FOR MORE INFORMATION OR:

Contact Break-Away Tours at
1-800-962-7325 or by email
info@break-awaytours.com

NOT INCLUDED IN THE PRICE OF THE TOUR: Medical and cancellation insurance, meals and beverages not specifically stated, all items of a personal nature, and items not listed under the section "TOUR INCLUDES". **ITINERARY SUBJECT TO CHANGE.**



LYRIC THEATRE
OF OKLAHOMA

2026 SEASON



February 11 - March 1

AT THE PLAZA THEATRE

June 16 - June 21

AT THE CIVIC CENTER



July 7 - 12

AT THE CIVIC CENTER

July 28 - August 2

AT THE CIVIC CENTER



September 16 - October 4

AT THE PLAZA THEATRE

November 25 - December 27

AT THE PLAZA THEATRE



Visit [LyricTheatreOKC.org](https://www.LyricTheatreOKC.org) or call (405) 524-9312