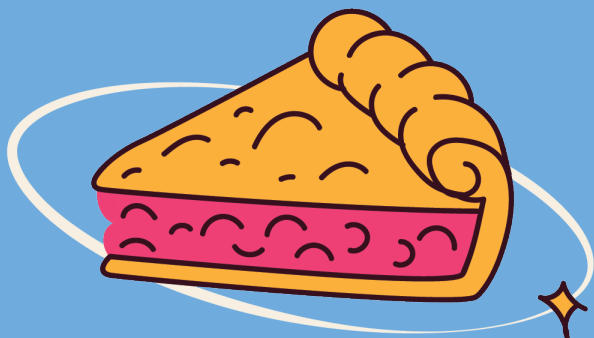




LYRIC THEATRE OF OKLAHOMA



# Waitress

*A SLICE OF MUSICAL HEAVEN*

FEBRUARY 12-MARCH 2

*Lyric at The Plaza Theatre*

THE OFFICIAL STATE THEATRE OF OKLAHOMA



# WE PRODUCE ENERGY THAT FUELS MODERN LIFE.

Devon Energy is a proud partner  
of Lyric Theatre and the Oklahoma  
performing arts community.

[devonenergy.com](https://www.devonenergy.com)



# DIRECTOR'S WELCOME

---

Dear Friends and Theatre Lovers,

Welcome to *Waitress*, a musical that is as heartwarming as it is heart-pounding, as sweet as it is bittersweet. It's a privilege to have you with us here at Lyric Theatre of Oklahoma as we bring this remarkable show to life on our stage.



*Waitress* takes us on an emotional and uplifting journey with Jenna, a waitress with a gift for baking pies and a dream for a better life. Through moments of laughter, love, and loss, we explore the complexity of human connection, the power of friendship, and the courage it takes to make your own destiny. Sara Bareilles' beautiful music and lyrics, combined with an engaging story full of charm and wit, create a show that is both deeply moving and irresistibly fun.

As a director, it's a joy to witness the creative magic that unfolds when a team of talented actors, musicians, designers, and technicians work together to share this story with you. Each performance is a new opportunity for discovery, and we are so excited to invite you into our world for this journey.

Whether it's your first time at Lyric Theatre or you're a regular attendee, I hope you find your own joy and inspiration in what we've created. Thank you for being here to share in all that live theatre can bring to our lives — a reminder that, just like Jenna, we all have the power to rewrite our stories, one slice at a time. Enjoy the show!

Yours truly,

A handwritten signature in black ink that reads "Ashley Wells". The signature is fluid and cursive, with a large, sweeping "A" and "W".

**Ashley Wells**  
*Executive Producer*



---

**2002-2024 Celebrating 20+ Years of Service**  
*The worldwide leader of  
tax and compliance services.*

# We are honored to support **Lyric Theatre**

Express Employment Professionals  
has been finding job seekers work since  
1983 across North America, South Africa,  
Australia and New Zealand.

Express strives to provide hope through  
employment and it starts with our  
International Headquarters based  
right here in Oklahoma City.

***Express knows jobs,  
get to know Express!***



To find a location near you, visit  
[ExpressPros.com/Locations](http://ExpressPros.com/Locations)



# LYRIC THEATRE OF OKLAHOMA

**MICHAEL BARON<sup>+</sup>**  
Producing Artistic Director

**JIM REYNOLDS**  
Managing Director

**ASHLEY WELLS<sup>+</sup>**  
Executive Producer

PRESENT

# WAITRESS

Book by **JESSIE NELSON**

Music and Lyrics by **SARA BAREILLES**

Based upon the motion picture written by Adrienne Shelly

<i>Set Designer</i> .....	<b>KIMBERLY POWERS<sup>#</sup></b>
<i>Costume Designer</i> .....	<b>JEFFREY MEEK</b>
<i>Lighting Designer</i> .....	<b>JASON LYNCH<sup>#</sup></b>
<i>Sound Designer</i> .....	<b>JACOB HENRY</b>
<i>Properties Designer</i> .....	<b>AMANDA SCHNAKE</b>
<i>Hair Designer</i> .....	<b>JOANNE MIDDLETON WEAVER</b>
<i>Fight Director/Intimacy Choreographer</i> .....	<b>KRIS KUSS<sup>+</sup></b>
<i>Stage Manager</i> .....	<b>PAIGE MILLER</b>

MUSICAL DIRECTION BY **MARY BROZINA WIERICK**

CHOREOGRAPHY BY **AMY REYNOLDS REED<sup>+</sup>**

DIRECTED BY **ASHLEY WELLS<sup>+</sup>**

Orchestrations by Sara Bareilles and *The Waitress* Band

Music by Arrangement with Sony Music Publishing

Originally Produced on Broadway by

Barry and Fran Weissler    Norton and Elayne Herrick

David I. Berley    Independent Presenters Network    A.C. Orange International - Peter May

Michael Roif, Ken Schur, Marisa Sechrest - Jam Theatricals    42nd.club/Square | Theatrics - Benjamin Simpson

& Joseph Lonthorne/Shira Friedman    Alecia Parker, Executive Producer

## PRODUCING SPONSORS:

**PAULA & CARL STOVER**



**O.K. DETRICK FOUNDATION/  
GAIL BEALS**

## ACKNOWLEDGEMENTS

WAITRESS is presented through special arrangement with Music Theatre International (MTI). All authorized performance materials are also supplied by MTI. Original motion picture produced by Michael Roiff/Night & Day Pictures. World Premier produced by the American Repertory Theater at Harvard University, August 2, 2015 Diane Paulus, Artistic Director and Diane Borger, Producer Peter Duchan, Script Consultant for A.R.T. Production

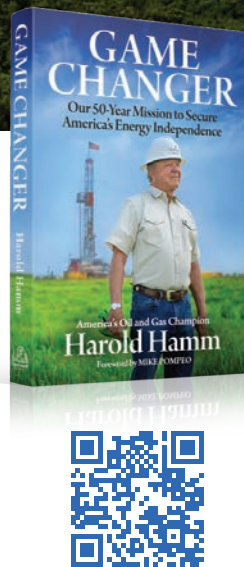
Lyric Theatre of Oklahoma operates under agreements with Actors' Equity Association\*, the union of professional actors and stage managers in the United States, United Scenic Artists' (USA) and The Stage Directors and Choreographers Society\*. Lyric Theatre is a member of the National Alliance for Musical Theatre (NAMT). Lyric Theatre's programs are sponsored, in part, by The National Endowment for the Arts, Allied Arts, and the Oklahoma Arts Council.



\*Member of Actors' Equity Association (AEA) • #Member of United Scenic Artists (USA) • + Member Stage Directors and Choreographers Society (SDC)

# Inspiring the Next Generation of Game Changers

THE FUTURE of our country and our world depends on game changing thinkers – technologists, engineers, geologists – who are determined to discover what’s next, with the understanding that hydrocarbons will be essential and irreplaceable for decades to come. Continental Resources will lead the way by producing clean, reliable, affordable, abundant American energy. *We are America’s Energy Champion.*



*Continental Resources is proud to support Lyric Theatre and their mission to enrich the quality of life for the people of Oklahoma.*



America's  
Energy  
Champion



## TO HELP YOU (AND THE PEOPLE AROUND YOU) HAVE THE BEST TIME, WE PLEASE ASK THAT YOU:

- Always cooperate with the ushers and front-of-house staff. They are there to help you, keep an orderly environment, and ensure the show begins as scheduled.
- Turn off your cell phones. All the way off ...
- Unwrap all candies now and refrain from loud eating during the performance.
- Treat all theatre staff you see with respect and kindness. They want you to have a great time, and they deserve respect and a positive work environment.
- Be engaged in the show! But also be respectful of the people around you and do not make any overly disruptive comments.
- Do not sing along with the actors. It distracts your fellow theatregoers and is not thoughtful.
- Do not engage with the actors or musicians working in the show. Only engage if they encourage you to, and please do not distract them at any time during the performance.
- Be patient with the restroom lines. We know they're long, but do not become pushy or rude. Everyone will get their turn.
- Please be advised that these productions may contain: Strobe Lighting Effects and Theatrical Fog/Haze.
- Relax, sit back, and enjoy the show! Once again, we would not be here without you.

THE VIDEOTAPING OR MAKING OF ELECTRONIC OR OTHER AUDIO AND/OR VISUAL RECORDINGS OF THIS PRODUCTION AND DISTRIBUTING RECORDINGS OR STREAMS IN ANY MEDIUM, INCLUDING THE INTERNET, IS STRICTLY PROHIBITED, A VIOLATION OF THE AUTHOR'S RIGHTS AND ACTIONABLE UNDER UNITED STATES COPYRIGHT LAW.



Lyric's A Christmas Carol

# ALLIED ARTS

Allied Arts is proud to support more than 40 local nonprofit arts and cultural organizations annually, including Lyric Theatre. Together, we reach more than one million people each year statewide with inspiring, educational and community-building programming.

With **you** art can.

(405) 278 - 8944 | [alliedartsokc.com](http://alliedartsokc.com)



# SONG LIST

## ACT I

<i>What's Inside</i> .....	Jenna and Ensemble
<i>Opening Up</i> .....	Jenna, Becky, Dawn, Cal, and Company
<i>The Negative</i> .....	Becky, Dawn, and Jenna
<i>What Baking Can Do</i> .....	Jenna and Ensemble
<i>Club Knocked Up</i> .....	Female Ensemble
<i>Pomatter Pie</i> .....	Band
<i>When He Sees Me</i> .....	Dawn
<i>It Only Takes a Taste</i> .....	Dr. Jim Pomatter and Jenna
<i>You Will Still Be Mine</i> .....	Earl and Jenna
<i>A Soft Place to Land</i> .....	Jenna, Becky, and Dawn
<i>Never Ever Getting Rid of Me</i> .....	Ogie and Ensemble
<i>Bad Idea</i> .....	Jenna, Dr. Jim Pomatter, and Ensemble

## ACT II

<i>I Didn't Plan It</i> .....	Becky
<i>Bad Idea</i> (Reprise) .....	Jenna, Dr. Jim Pomatter, Becky, Cal, Dawn, Ogie and Ensemble
<i>You Matter to Me</i> .....	Dr. Jim Pomatter and Jenna
<i>I Love You Like a Table</i> .....	Ogie, Dawn, & Ensemble
<i>Take It From an Old Man</i> .....	Joe and Ensemble
<i>She Used to Be Mine</i> .....	Jenna
<i>Contraction Ballet</i> .....	Jenna and Company
<i>What's Inside</i> (Reprise) .....	Company
<i>Everything Changes</i> .....	Jenna, Becky, Dawn, & Company
<i>Opening Up</i> .....	Company

## ORCHESTRA

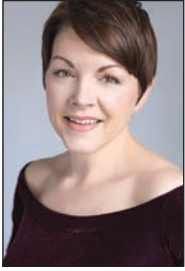
Music Director/Piano Conductor .....	Mary Brozina Wierick
Keyboard 2 .....	Laura Himes
Cello .....	Jeremy Sheets & Emily Stoops (Sub)
Guitar 1 .....	Jay Gleason
Guitar 2 .....	Michael Fresonke
Bass Guitar .....	Jasmine Mohammadi
Drums .....	James Metcalfe

## DONATE TO LYRIC THEATRE TODAY!

Lyric has delighted audiences with the best of American theatre since 1963, but it is our many supporters and sponsors who deserve a standing ovation. Your support makes the magic happen!



# CAST



**LINDSIE  
VANWINKLE-GUTHRIE**  
*Jenna Hunterson*



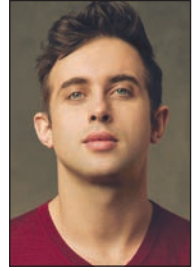
**HANNAH BETH BAKER**  
*Dawn*



**JALEESA BEAVERS**  
*Becky*



**ANDREW BARKER**  
*Dr. Jim Pomatter*



**SEAN MCGEE\***  
*Earl Hunterson*



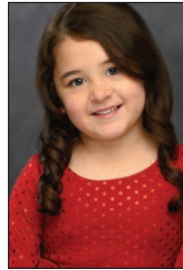
**JUSTIN LARMAN\***  
*Ogie Anhorn*



**STEPHEN HILTON**  
*Joe*



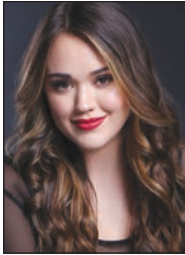
**BRIAN GONZALES\***  
*Cal*



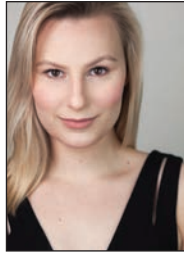
**ADDIE RINDLER**  
*LuLu #1*



**GEORGIA OQUIN**  
*LuLu #2*



**SIERRA SIKES**  
*Francine/Ensemble/Dawn US*



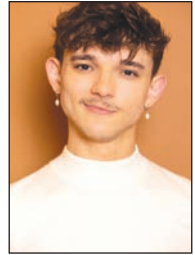
**MACKENZIE  
MCINTYRE-CHILDERS**  
*Mother/Ensemble/Jenna US*



**MARIAH WARREN**  
*Nurse Norman/Ensemble/  
Becky US*



**RIORDAN BANKS**  
*Dance Captain/  
Ensemble/Joe US*



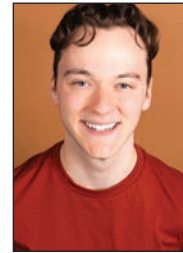
**JOEL STEPHENS**  
*Ensemble/  
Dr. Jim Pomatter US*



**ZACHARY WRIGHT**  
*Ensemble/Earl US*



**RONNELL FLEMING**  
*Swing*



**LOGAN R. WRIGHT**  
*Swing/Ogie US*

2024-25  
School Year

## LYRIC'S MUSICAL INTERACTIVE PROGRAM

Musical Interactive began traveling to Oklahoma schools in 2007 as part of Oklahoma's Centennial Celebration. Today, Lyric continues to tour to schools across the state, interacting with the students by involving them in part of the storyline, conducting a sing-along and much more!

### BOOK YOUR SCHOOL FOR A FREE SHOW!



**For more information  
& to book your school,  
scan the QR code ---->**



This special touring program is offered free of charge to interested schools and is underwritten by The Dr. Elliott & Pam Schwartz AEIOU Foundation.

# CAST BIOS

(In alphabetical order.)

**HANNAH BETH BAKER** (*Dawn*) – is making her Lyric theater debut. OTHER THEATRE: *Sister Act*, *West Side Story*, *Fiddler on the Roof*, Granbury Theatre Company; *Anastasia*, *Newsies*, Plaza Theatre Company; *Godspell*, *Little Women*, Weatherford College. ADDITIONAL CREDITS: A.A. from Weatherford College, B.M. in Vocal Performance and Music Theater at Oklahoma City University.

**RIORDAN BANKS** (*Dance Captain/Ensemble/ Joe Understudy*) – AT LYRIC: *The Prom*, *Mary Poppins*. OTHER THEATRE: *In the Heights*, *Rent*, *Footloose*, *Legally Blonde*, *Bright Star*, *Taken for Granted*, Oklahoma City University.

**ANDREW BARKER** (*Dr. Jim Pomatter*) – is making his Lyric Theatre debut. REGIONAL THEATRE: *The Last Five Years*, Eclipse Theatre Collective; *Waitress*, Theatre Tulsa; *Beautiful: The Carole King Musical*, Theatre Tulsa; *Kinky Boots*, Theatre Tulsa; *Godspell*, Tulsa Project Theatre. OTHER THEATRE: *I Love You, You're Perfect, Now Change*, *Of Mice and Men*, Tulsa Opera; *Susannah*, Red River Lyric Opera.

**JALEESA BEAVERS** (*Becky*) – AT LYRIC: *Big River*. REGIONAL THEATRE: *Les Misérables*, The Munny; *Godspell*, *Hair*, City Rep. ADDITIONAL CREDITS: B.M. from the University of Central Oklahoma.

**RONNELL FLEMING** (*Swing*) – AT LYRIC: Lyric's *A Christmas Carol*, *Once On This Island*, *Rodgers and Hammerstein's Cinderella*. OTHER THEATRE: *The Polar Express*, OKC Railway Productions; *The River City Players*, Tahlequah Playhouse; *Legally Blonde*, *She Loves Me*, *Bonnie and Clyde*, *RENT*, University of Central Oklahoma. ADDITIONAL CREDITS: B.M. in Musical Theater from the University of Central Oklahoma.

**BRIAN GONZALES\*** (*Cal*) – is making his Lyric Theatre debut. REGIONAL THEATRE: *A Christmas Carol*, *Fly*, *Galileo*, Dallas Theatre Center; *Another Night Before Christmas*, Gulfshore Playhouse; *It Happened In Key West*, The Fulton; *Oklahoma!*, *Jekyll and Hyde*, *Evita*, *Joseph and the Amazing Dreamcoat*, Casa Mañana; *Chaplin*, *The Manic Monologues*, *One Man Two Guv'nors*, *Book Of Days*, *Woman In Black*, WaterTower Theatre. BROADWAY: *Mister Saturday Night*, *Aladdin*, *One Man Two Guv'nors*, *Shrek*, *25th Annual Putnam County Spelling Bee*.

WEST END: *Aladdin*. TOURS: *Shrek*, *25th Annual Putnam County Spelling Bee*. TV: *Law and Order*, *Elementary*. FILM: *Mister Saturday Night: A New Musical Comedy*, *Aladdin: Live From The West End*, *The Four Players: The Fixer*.

**STEPHEN HILTON** (*Joe*) – AT LYRIC: *Lyric's A Christmas Carol*, *Titanic*, *Urinetown*, *Bright Star*, *Ragtime*, *Hairspray*. REGIONAL THEATRE: *A Territorial Christmas Carol*, *Sweeney Todd*, *The Producers*, *Little Mermaid*, *Love Letters*, *Pollard Theatre*; *Twelfth Night*, *The Tempest*, *Oklahoma Shakespeare*. OTHER THEATRE: Oklahoma City Philharmonic, *Seasonal Santa*; *Flipside: The Patti Page Story*, University of Central Oklahoma's Broadway Tonight.

**JUSTIN LARMAN\*** (*Ogie Anhorn*) – AT LYRIC: *Assassins*, *James and the Giant Peach*, *Rock of Ages*, *Junie B. Jones the Musical*, *Curious George*, and *the Golden Meatball*. REGIONAL CREDITS: *The 25th Annual Putnam County Spelling Bee*, *The Music Man* in Concert, *Zombie Prom*, City Rep; *Guys and Dolls*, *Elf the Musical*, St. Luke's Poteet Theatre; *Musical Comedy Murders of 1940*, Tent Theatre; *Elf the Musical*, Arvada Center; *Anything Goes*, Summerstock. OFF BROADWAY: *FLIPSIDE: The Patti Page Story*, 59E59. ADDITIONAL CREDITS: B.M. University of Central Oklahoma.

**SEAN MCGEE\*** (*Earl Hunterston*) – AT LYRIC: *Jersey Boys*, *The Little Mermaid*, *Spamalot*, *A Little Night Music*. NATIONAL TOUR: *Jersey Boys*. REGIONAL THEATRE: *Jersey Boys*, Engeman Theatre; *Jersey Boys*, Music Theatre of Connecticut; *Reefer Madness*, Theatre Under the Stars; *Cry Baby*, Tent Theatre; *Oklahoma!*, Pennsylvania Shakespeare; *Xanadu*, WaterTower Theater; *Oklahoma!*, Lyric Stage of Dallas; *My Fair Lady*, City Rep. ADDITIONAL CREDITS: B.F.A. University of Oklahoma.

**MACKENZIE MCINTYRE-CHILDERS** (*Jenna's Mother/Ensemble/Jenna Understudy*) – is making her Lyric Theatre debut. REGIONAL THEATRE: *The Addams Family*, *Into the Woods*, Sooner Theatre; *Footloose*, Artworks Academy. OTHER THEATRE: *Side Show*, *The Music Man*, Oklahoma City University. ADDITIONAL CREDITS: M.B.A. and B.M. in Musical Theatre from Oklahoma City University.



## BRINGING LUXURY HOME

---

There is only one Real Estate Advisor to contact when you decide to make your move. Britta Thrift leverages her knowledge and training to negotiate winning deals for all of her clients, closely reflecting their personal goals and passions.

With numerous designations to her name, Britta combines her decade of experience with an approachable but straightforward communication style to create an exclusive and rewarding experience for her clients.

How will you define YOUR luxury?

Britta Thrift, JD • Advisor  
405-821-2313 • Follow me @britta.at.ev  
1138 N Robinson Avenue • Oklahoma City OK, 73103  
britta.thrift@evrealestate.com • brittaeliteteam.com

**ENGEL & VÖLKERS**<sup>®</sup>  
BRITTA ELITE TEAM

©2024 Engel & Völkers. All rights reserved. Each brokerage independently owned and operated. Engel & Völkers and its independent License Partners are Equal Opportunity Employers and fully support the principles of the Fair Housing Act.

# CAST BIOS

(In alphabetical order.)

**GEORGIA OQUIN** (*Lulu #1*) – is making her Lyric Theatre debut. ADDITIONAL CREDITS: *Encanto*, *Winter Spectacular* (2023 & 2024), Dance Unlimited/Spotlight Acting Academy.

**ADDIE RINDLER** (*Lulu #2*) – is making her Lyric Theatre debut. REGIONAL THEATRE: *Little Red Riding Hood*, Lyric's Thelma Gaylord Academy; OTHER THEATRE: *Ask Mr. Bear*, *Are You My Mother?*, Peace Lutheran Preschool; ADDITIONAL CREDITS: Dances at OKC Ballet.

**SIERRA SIKES** (*Francine/Ensemble/Dawn Understudy*) – AT LYRIC: *Jersey Boys*, *Head Over Heels*, *The Rocky Horror Show*, *Distant Thunder*. REGIONAL THEATRE: *Disaster!*, Pollard Theatre. OTHER THEATRE: *The Wizard of Oz*, Sooner Theatre; *Rock of Ages*, *Nine*, *The Most Happy Fella*, *Merrily We Roll Along*, *The Theory of Relativity*, University of Central Oklahoma. TELEVISION: *NBC's The Voice Season 25*. ADDITIONAL CREDITS: B.M. in Musical Theatre from The University of Central Oklahoma. Original music is available on all streaming platforms under: *Sierra Sikes & OK3*.

**JOEL STEPHENS** (*Ensemble/Dr. Jim Pommater Understudy*) – AT LYRIC: *Rodgers & Hammerstein's Cinderella*, *Jersey Boys*, *Grease*, *Titanic*. REGIONAL THEATRE: *Rock of Ages*, Arts Center of Coastal Carolina. OTHER THEATRE: *Catch Me If You Can*, *Bonnie & Clyde*, *Little Women*, *She Loves Me*, *The Wedding Singer*, *And the World Goes 'Round*, *Rock of Ages*, University of Central Oklahoma; *The Polar Express Train Ride*, Warner Bros. ADDITIONAL CREDITS: B.M. in Musical Theatre from the University of Central Oklahoma.

**LINDSIE VANWINKLE-GUTHRIE** (*Jenna Hunterson*) – AT LYRIC: *The Prom*, *Carousel*, *Mary Poppins*. REGIONAL THEATRE: *White Christmas*, Westchester Broadway; *9 to 5: The Musical!*, *Merry Go Round Playhouse*, *Austen's Pride*, Finger Lakes Music Theatre Festival; *The Full Monty*, Stages St. Louis; *My Fair Lady*, Broadway Tonight!/New Bedford Festival Theatre/Arrowrock Lyceum Theatre/Arts Center of Coastal Carolina; *Grey Gardens*, 11th Hour Theatre Company; *The Mystery of Edwin Drood*, *The Spitfire Grill*, Barnstormers Theatre; *Les Misérables*, Ocean State Theatre Co; *Last Five Years*, Poteet Theatre; *25th Annual Putnam*

*County Spelling Bee*, Astoria Performing Arts; *Into the Woods*, Sooner Theatre. OFF BROADWAY: *Nevermore*, *Flipside: The Patti Page Story*, *The Magdalene*, *A Dog Story*. NATIONAL TOUR: *White Christmas*. ADDITIONAL CREDITS: Graduate of the University of Central Oklahoma.

**MARIAH WARREN** (*Nurse Norman/Ensemble/Becky Understudy*) – AT LYRIC: *Once On This Island*, *Rodgers & Hammerstein's Cinderella*, Lyric's Musical Interactive (*Cinderella: A Literary Tale & OKLAHOMA!*), *The Prom*, *The Sound of Music*, *Big River*, *The Rocky Horror Show*, *Kinky Boots*, *Distant Thunder*, Lyric's *A Christmas Carol*. REGIONAL THEATRE: *Dance Nation*, Southern Plains Productions; *As You Like It*, *A Midsummer Night's Dream*, *Romeo & Juliet*, and *The Tempest*, Oklahoma Shakespeare; *Beehive*, *Heathers the Musical*, Pollard Theatre; *South Pacific*, Jewel Box Theatre.

**LOGAN R. WRIGHT** (*Swing/Ogie Understudy*) is making his Lyric Theatre debut. REGIONAL THEATRE: *Rent*, Southern Plains Productions. OTHER THEATRE: *Big Fish*, *Theory of Relativity*, *Sweet Charity*, *Rock of Ages*, *Rent*, *Sweeney Todd*, *The Wedding Singer*, *Bonnie & Clyde*, *Fugitive Songs*, *She Loves Me*, University of Central Oklahoma.

**ZACHARY WRIGHT** (*Ensemble/Earl Understudy*) is making his Lyric Theatre debut. REGIONAL THEATRE: *The Hunchback of Notre Dame*, Kismet Arts Studio. OTHER THEATRE: *The Wedding Singer*, *Bonnie and Clyde*, *Little Women*, *Sweeney Todd*, *Goosebumps: The Phantom of the Auditorium*, University of Central Oklahoma; *25th Annual Putnam County Spelling Bee*, *Picnic*, *Titanic: The Musical*, *The Music Man*, *The Wizard of Oz*, *Joseph and the Amazing Technicolor Dreamcoat*, Rose State College. FILM: *Jurassic Games 2*. TELEVISION: *Konnect HQ*. ADDITIONAL CREDITS: *The Polar Express*, Railway Productions. *The River City Players*, Tahlequah Playhouse.

JOIN A COMMUNITY  
OF PROBLEM-SOLVERS



TOGETHER, WE

CONNECT

Rotary connects you with diverse professionals who share your drive to give back to communities near and far.

Take action with Rotary and use your skills to solve issues and address community needs.



# LYRIC THEATRE LEADERSHIP

**MICHAEL BARON<sup>+</sup>** (*Producing Artistic Director*) – At Lyric, he has directed, *Cinderella* (Co-Direction with Dr. Brian Cheslik, Artistic Director of Deaf Austin Theatre), *The King of Pangaea*, *Concerto* (World Premiere), *The Prom*, *Big River*, *Carousel*, *Head Over Heels*, *Master Class*, *Grease*, *Lyric Kids' Clubhouse*, *Frost/Nixon*, *Titanic*, *Singin' in the Rain*, *Bright Star*, *When We're Gone* (World Premiere), *Disney's Freaky Friday*, *Fun Home*, *Disney's When You Wish, James & the Giant Peach*, *I Am My Own Wife*, *Assassins*, *Fiddler on the Roof*, *Dreamgirls*, *Mann... And Wife* (world premiere), *Bernice Bobs Her Hair* (World Premiere), *Big Fish* with David Elder and Tony-nominee Emily Skinner, *Oklahoma!*, *An Inspector Calls*, *A Little Night Music* with Tony-nominee Dee Hoty, *Les Misérables*, *Triangle*, *Big River*, *Tarzan*, *The Glass Menagerie*, *The Mystery of Irma Vep*, *Call Me Madam* with Tony-winner Beth Leavel, *Spring Awakening*, *Ragtime*, *Oliver!*, *Boeing Boeing*, *Always...Patsy Cline*, *December Divas*, *The Rocky Horror Show* and the annual production of Lyric's *A Christmas Carol* (also adapted).

Baron has directed over 100 productions at theaters across the country, including *Tosca* (OKC Philharmonic) *Mendelssohn's Elijah* (Canterbury Voices) as well as co-directing with Sandra Mae Frank an ASL/Spoken English production of *The Music Man* at The Olney Theatre in Washington, D.C., co-directing with Brian Cheslik an ASL/Spoken English production of *Cinderella* at ZACH Theatre/Deaf Austin Theatre, and the current production of *A Christmas Carol* at Ford's Theatre in Washington, D.C. Other regional directing highlights include ZACH Theatre: *Peter and the Starcatcher*, *Spring Awakening*; Signature Theatre: *The Little Dog Laughed*, *Songs for a New World* starring Tony-winner Alice Ripley, Tony-nominee Brian D'Arcy James, Emmy-nominee Titus Burgess, and music direction by Jason Robert Brown; Adventure Theatre: *James & the Giant Peach*, the world premiere musical *Big Nate*; Goodspeed Musicals: *Meet John Doe*, Trinity Repertory Company: *The School for Scandal*. La Mama: *The Whore of Sheridan Square* (wrote and directed, published in anthology Plays and Playwrights 2006). NEA and Poetry Foundation 2010-2024: Poetry Out Loud National Competition Finals with hosts Joy Sunday, John Leguizamo, Kerry Washington and Anna Deavere Smith. Teaching: American University, Brown University, Holy Cross College, Oklahoma City University, and Rhode Island College. Michael has been a theatre grant panelist for the National Endowment for the Arts and the National Alliance for Musical Theatre. Training: B.A. in Theatre Arts, Wake Forest University; M.F.A. in Directing, Trinity Repertory Conservatory. Michael served as the Associate Director of Signature Theatre in Arlington, Virginia-winner of the 2009 Regional Theatre Tony Award. Michael received the 2012 Helen Hayes Award for Outstanding Direction of a Resident Musical in Washington, D.C. for Adventure Theatre's production of *A Year with Frog and Toad*, the 2016 Oklahoma Governor's Arts Award, a 2016 special award from Oklahoma City Mayor's Committee on Disabilities Concerns, the 2021 Yad B'Yad, Hand in Hand Award from the Jewish Federation of OKC and the 2022

Helen Hayes Award for Outstanding Direction of a Musical for Olney Theatre's production of *The Music Man*. He is a member of the Rotary Club of Oklahoma City and an emeritus board member for the National Alliance for Musical Theatre.

**JIM REYNOLDS** (*Managing Director*) – Is now in his seventh year at Lyric Theatre. As a life-long professional in theatre management, he has extensive experience in marketing, public relations, sales, project management, strategic planning, fundraising, and patron loyalty strategies. Prior to Oklahoma City, he was the Director of Marketing and Public Relations at ZACH Theatre – the leading regional theatre in Austin, TX. During his 25-year tenure he played an integral role in growing ZACH's annual budget from \$550,000 to \$8,000,000 and opening two state-of-the-art theatre facilities. Prior to that, he was the Sales Director at Dallas Theater Center, helmed by Adrian Hall and Peter Donnelly – both acclaimed leaders in the first and second generation of the American regional theatre movement. Fresh from the University of South Carolina, he served as Patron Manager and Production Business Manager at the Alliance Theatre/Atlanta Children's Theatre, the Southeast's leading regional theatre and Tony Award-Winner. Jim has served as a civic volunteer with several non-profit organizations and served as the Board President of the Plaza District Business Association in 2021.

**ASHLEY WELLS<sup>+</sup>** (*Executive Producer*) – Celebrates 23 years with Lyric Theatre of Oklahoma and was recently honored as the recipient of the Arts in Education Governor's Arts Award. She is on the Board of the National Alliance for Musical Theatre and Chairs the Membership Committee. At LYRIC: *Jersey Boys*, *The Play That Goes Wrong*, *Kinky Boots* (Director), *Matilda* (Director), *Nunsense*, *Disney's Newsies* (Director), *Hello, Dolly!* (Director), *Junie B. Jones* (Director), *Rock of Ages* (Director), *The Wizard of Oz* (Director), *The Fantasticks* (Director/Choreographer), *Bernice Bobs Her Hair* (Choreographer), *Billy Elliot* (Director), *Pageant* (Director), *Monty Python's Spamalot* (Director), *Les Misérables* (Choreographer), *Triangle: A New Musical* (Associate Director), *The Odd Couple* (Director), *Big River* (Choreographer), *Tarzan* (Choreographer), *Some Enchanted Evening* (Director), *Sweet Charity* (Director) with Tony Award-winner Billy Porter, *Spring Awakening* (Choreographer), Lyric's *A Christmas Carol* (Choreographer), *Oliver!* (Choreographer), *The Rocky Horror Show* (Choreographer), *Urinetown: The Musical* (Co-choreographer), *Jesus Christ Superstar* (Choreographer), *Oklahoma!* (Co-Choreographer), *Hello, Dolly!* (Co-choreographer), *Cabaret* (Choreographer/Ensemble), *Chicago* (Choreographer/Merry Murderess). REGIONAL THEATRE: *The Play That Goes Wrong*, Oklahoma City University (Director); *Phantom of the Opera*, North Shore Music Theatre (Ensemble); *Evita* (Ensemble), *Brigadoon* (Jean), *The Music Man*, Music Theatre of Wichita (Zaneeta Shin); *La Cage Aux Folles*, Casa Mañana (Anne). BROADWAY AND NATIONAL TOUR: *Hello, Dolly!*





## Oklahoma Arts Council

Leading, cultivating, and amplifying the transformative power of the arts for all Oklahomans and their communities.

Go to [arts.ok.gov](https://arts.ok.gov) to learn how our grants and programs cultivate and support the arts in communities and schools across Oklahoma.

*The Oklahoma Arts Council is an agency of state government.*



# ARTISTIC STAFF

**AMY REYNOLDS REED\*** (*Choreographer*) – is an Oklahoma Native, Mom to Krayson and Ember, and Dance Educator. Amy is the founder & director of Dance Unlimited/Spotlight Acting Academy, serving the Edmond and OKC community and inspiring young artists for over 25 years. Amy has been fortunate to work with Lyric Theatre of Oklahoma, City Rep Theatre of Oklahoma, previously a College Professor at both University of Oklahoma, and University of Central Oklahoma. Amy is a member of the Stage Directors and Choreographers Union (SDC). Waitress is Amy's 31st production with Lyric Theatre and 7th production alongside Director, Ashley Wells.

**MARY BROZINA WIERICK** (*Music Director*) – is a native New Jerseyan, began her career in music directing while studying at Elon University in North Carolina. She worked in regional theatres up and down the East Coast before settling in Oklahoma, where she is currently a Professor of Voice at Oklahoma City University and the University of Central Oklahoma. She is a frequent Music Director for professional, community, and educational theatres in the area and has a thriving private voice studio. Here in Oklahoma, she has been seen both onstage and in the pit for several local theatres including Lyric Theatre of Oklahoma, City Rep Theatre, Upstage Theatre, The Jewish Theatre of Oklahoma, Oklahoma City Theatre Company, The Pollard Theatre, and the Poteet Little Theatre at St. Luke's. Mary was most recently Music Director/Conductor for *Rodgers & Hammerstein's Cinderella*, as well as the Assistant Music Director/Conductor for the new work *King of Pangaia* last Spring. Some favorite shows and roles are Amy in *Company*, Maureen in *Rent* (Laurel Mill Playhouse), and Liliane Le Fluer in *Nine* (University of Central Oklahoma).

**KIMBERLY POWERS\*** (*Set Designer*) – AT LYRIC: *Mary Poppins*, *Jersey Boys*, *The Play That Goes Wrong*, *Matilda*, *Carousel*, *Grease*, *Denise Lee: Pressure Makes Diamonds*, *Nunsense*, *Newsies*, *Titanic: The Musical*, *Hello, Dolly!*, *Mamma Mia*, *West Side Story*, Lyric's *A Christmas Carol*, *Fiddler on the Roof*, *An Inspector Calls*, *Billy Elliot*. REGIONAL: Virginia Stage (VA), Riverside Theatre (FL), Brown/Trinity Rep (RI), Opera Theatre St. Louis (MO), TheatreSquared (AR), Arkansas Repertory Theatre (AR), Florida Repertory Theatre (FL), Virginia Repertory Theatre (VA), Charleston Stage (SC), Stages Rep (TX), Southern Rep (LA), Casa Mañana (TX), Northern Stage (VT). ADDITIONAL CREDITS: Freelance Exhibit & Event Designer since 2006; Resident Set Designer – Ocean State Theatre Company (2012-13), Ohio Light Opera (2008-2013); First Design Assistant – Denver Center Theatre Company (2006-2008); Freelance Scenic Artist since 2001.

**JEFFREY MEEK** (*Costume Designer*) – 24th season and over 130 productions with Lyric Theatre of Oklahoma. REGIONAL: Ohio Light Opera: Over 50 productions, including *Lady Kate* (World Premiere), *Regrets Only* (World Premiere), *The Arcadians* (U.S. Premiere), *The Grande Duke* (U.S. Premiere); Evan Bernardin Productions: *Merry Christmas Charlie Brown*

(National Tour); Gershwin Productions: *America Girl LIVE* (National Tour), ZACH Theatre: *Cinderella*, *The Prom*. Tulsa Opera: 2003/2004 Seasons; Casa Mañana Playhouse: *Annie*, *Disney's High School Musical*, *A Christmas Carol – The Musical*; Stage One: *I Do, I Do, Are We There Yet?* (World Premiere), *Swing*; Eastman School of Music (3 Seasons); Triad Theatre: *Kids in America*; Colossal Studios: *Family Pirate Adventure*; Adventure Theatre: *James and the Giant Peach* (Helen Hayes Nomination). LOCAL: OKC Philharmonic: 15 years of *A Very Merry Pops*; Reduxion Theatre: *7 Seasons*, *Hair*, *Cabaret*, *Sweeney Todd*, *Romeo and Juliet*; Carpenter Square Theatre: *Importance of Being Earnest*, *Maritius*; Oklahoma Children's Theatre: *To Kill a Mockingbird*; Jewel Box Theatre: *Bus Stop*, *Leading Ladies*, *37 Postcards*, *Nunsense II-The Second Coming*, *Suite Surrender*, *South Pacific*. FILM: *Fingerprints*, *Pearl*, *Agenda*.

**JASON LYNCH\*** (*Lighting Designer*) – is a Chicago-based lighting designer for live performance and makes his Lyric Theatre of Oklahoma debut with this production. REGIONAL THEATRE: Alley Theatre, Alliance Theatre, Baltimore Center Stage, Berkeley Repertory Theatre, Chicago Shakespeare Theater, City Theatre Company, Court Theatre, Dallas Theater Center, Denver Center Theatre Company, George Street Playhouse, Geva Theatre Center, Goodman Theatre, Goodspeed Musicals, Great Lakes Theater, Gulfshore Playhouse, Guthrie Theater, Huntington Theatre Company, Indiana Repertory Theatre, Kansas City Repertory Theatre, Long Wharf Theatre, McCarter Theatre, Milwaukee Repertory Theater, Northlight Theatre, Oregon Shakespeare Festival, Repertory Theatre of St. Louis, Seattle Repertory Theatre, Steppenwolf Theatre, The Old Globe, Trinity Repertory Company, among others. Lynch is represented by The Gersh Agency.

**JACOB HENRY** (*Sound Designer*) – is the assistant professor of Sound Design at Oklahoma City University. He earned his B.A. in Theatre from Texas A&M University – Corpus Christi and his M.F.A. from Texas Tech University. Jacob taught technical theatre in Pflugerville and Round Rock ISD, and he has worked with such companies as Walt Disney World, Utah Shakespeare Festival, and locally for Lyric Theatre of Oklahoma. Henry also produced plays and new works for Two Beards Theatre Company which he founded in Austin. Henry's design work has been featured at the 2019 Prague Quadrennial, Samuel French's OOB Festival, and the Kennedy Center American College Theatre Festival where Henry was a fellow and National Finalist for the Excellence in Sound Design Award. This is Jacob's 11th production with Lyric.

**AMANDA SCHNAKE** (*Properties Designer*) – AT LYRIC: Lyric's *A Christmas Carol*, *Ain't Misbehavin'*, *The Prom*, *Sound of Music*, *The Rocky Horror Show*, *Kinky Boots*, *Carousel*, *Matilda*. ADDITIONAL CREDITS: *Vietgone*, *The Antelope Party*, *The Brothers Size*, *Superstitions*, Oklahoma City Repertory Theatre. OTHER THEATRE: *Footloose*, *Merry Wives of Windsor*, *Puffs*, Oklahoma City University.

+ Member Stage Directors and Choreographers Society  
# Member of United Scenic Artists (USA)

*sugar, butter, flour  
(& sprinkles!)*



pie  
JUNKIE

1711 NW 16th St • OKC Plaza District • open Tues-Sat

大同

GRAND  
HOUSE

ASIAN BISTRO

2701 N. Classen Blvd.  
OKC, OK 73106

405.524.7333

A TRADITIONALLY  
MODERN EXPERIENCE

WWW.GRANDHOUSEOKC.COM

COMING UP AT  
UNIVERSITY THEATRE



TICKETS ON  
SALE NOW!



WEITZENHOFFER FAMILY COLLEGE OF FINE ARTS  
UNIVERSITY THEATRE  
The UNIVERSITY of OKLAHOMA

(405) 325-4101 | THEATRE.OU.EDU

# ARTISTIC STAFF

**KRIS KUSS\*** (*Fight Director, Intimacy Choreographer*) – he/him. Kris is a director, fight director, actor, stage combat instructor, and educator based in OKC. He has his M.F.A. in Directing from the University of Southern Mississippi. He is an Associate Professor of Movement at Oklahoma City University and a Recognized Full Instructor with Dueling Arts International. AT LYRIC: *The Play That Goes Wrong, Jersey Boys, The Sound of Music, Newsies; Legacy of Light, Mother Road, Dracula: a Feminist Revenge Fantasy, Romeo & Juliet, She Kills Monsters.* REGIONAL THEATRE: *The Thanksgiving Play, Vietgone, OKCRep; Treasure Island, Emerald Coast Theatre Co.* OTHER THEATRE: *The Play That Goes Wrong, Oklahoma City University; Pagliacci, The Tragedy of Carmen, Painted Sky Opera; Hamlet, Macbeth, Oklahoma Shakespeare.*

**JASON BIAS** (*Assistant Director*) – AT LYRIC: Sweeney Todd, Titanic, Lyric's *A Christmas Carol, Lyric Kids Clubhouse, The Play That Goes Wrong, The Sound of Music.* REGIONAL THEATRE: *The Golden Apple, Annie Get Your Gun, Lyric Stage.* OTHER THEATRE: *Company, I Do, I Do!, Brick Road Theatre; Legally Blonde, Little Shop of Horrors, The Light in the Piazza, Oklahoma City University; The Sound of Music, My Fair Lady, Garland Summer Musicals.*

**PAIGE MILLER** (*Stage Manager*) – AT LYRIC: Lyric's *A Christmas Carol, Cinderella, Jersey Boys, Mary Poppins.* OTHER THEATRE: *Footloose, Iolanthe, Sweeney Todd, Machinal, Bright Star, A Midsummer's Night Dream, Oklahoma City University; Shorts, Oklahoma City Ballet.* ADDITIONAL CREDITS: Majoring in Junior Design and Production with an emphasis in Stage Management at Oklahoma City University.

**JESSIE NELSON** wrote the musical *Waitress* with music and lyrics by Sara Bareilles. The show played on Broadway for 4 years and moved to the West End in London. Sara and Jessie went on to create the show *Little Voice* which they Executive Produced with JJ Abrams for Apple TV. Jessie wrote, directed and produced *Corrina Corrina* and *I Am Sam* starring Sean Penn, who received an Academy Award nomination for his performance. Among her other directing credits are *Curb Your Enthusiasm* and *Love, the Coopers* with Diane Keaton. Her writing credits include *Step Mom* and *The Story of Us*. She produced *Fred Claus* and *Danny Collins*. In London, Jessie directed *Alice By Heart* which she co-wrote with Steven Sater with music by Duncan Sheik at the National Theater Connections Program and again at MCC in NYC. She began her career as an actress at the Public Theater working with the award-winning experimental theater Mabou Mines and at the New York Shakespeare Festival. She wrote the children's book *Labracadabra*. She has been the artistic Director of the Sundance Screen Writers Lab.

**SARA BAREILLES** can be seen starring in Tina Fey's series, *GIRLS5EVA*. Bareilles first achieved mainstream critical praise in 2007 with her widely successful hit "Love Song," which reached No. 1 in 22 countries around the world from her debut album *Little*

*Voice*. Since then, Sara has gone on to receive seven Grammy® nominations throughout her career, which include Song of the Year and Best Female Pop Vocal Performance for "Love Song" and one Album of the Year for her highly acclaimed third studio album, *The Blessed Unrest*. Her book, *Sounds Like Me: My Life (So Far) in Song*, was released in the fall of 2015 by Simon & Schuster and is a New York Times best seller. Making her Broadway debut Sara composed the music and lyrics for *Waitress*, for which she received her first Tony® Award nomination for Best Score and a 2017 Grammy® Award nomination for Best Musical Theater Album. She also made her Broadway acting debut in 2017 by stepping into the lead role in *Waitress*. 2018 was a big year for Sara, she co-hosted the Tony Awards®, was nominated for an Emmy® and Grammy® for her role in *Jesus Christ Superstar Live* in Concert and was awarded with the Songwriters Hall of Fame's Hal David Starlight Award. Sara also teamed up with Apple as an executive producer for *Little Voice* a 10-episode series, for which she created the original music. *What's Inside: Songs from Waitress*, her most recent solo studio album, is out on Epic Records. On April 5, 2019 Sara released her fifth full-length and first album of original material since 2013, entitled *Amidst the Chaos*. For this latest body of work, she joined forces in the studio with legendary Academy® Award-winning producer T Bone Burnett. As a result, the album spotlights her voice as a singer and storyteller like never before, while making an enduring statement.

**ADRIENNE SHELLY** We celebrate Adrienne Shelly as the writer of the 2007 film *Waitress*. An actor (Trust) and director (*Waitress, I'll Take You There, Sudden Manhattan*) for almost 20 years, she conceived the film while pregnant with her daughter Sophie (Lulu in the film), for whom she wrote it as a "love letter" in just two weeks. Adrienne's legacy includes The Adrienne Shelly Foundation, created after she died in 2006 to support Women Filmmakers. It's awarded 60+ production grants to talented women all over the world. Please visit [www.adrienneshellyfoundation.org](http://www.adrienneshellyfoundation.org) to honor Adrienne's memory and support ASF's critical artistic mission.

**SONY MUSIC PUBLISHING**, established in 1995 as a joint venture between Sony and Michael Jackson, is the world's leading music publisher. Sony owns or administers more than two million copyrights, including those from such iconic music catalogs as EMI Music Publishing, Leiber & Stoller, Mijac Music, Motown and Famous Music. Sony controls many of the best-known songs ever written, including "New York, New York," "All You Need Is Love," "You've Got a Friend," "Ain't No Mountain High Enough," "Over the Rainbow" and "Stand By Me." In addition, Sony represents the copyrights of such legendary artists as The Beatles, Leonard Cohen, Neil Diamond, Bob Dylan, Michael Jackson, Carole King, Joni Mitchell, Queen, The Rolling Stones, Sting, The Supremes, Hank Williams and Stevie Wonder, among others. Its ever-growing list of chart-topping artists and songwriters includes Alicia Keys, Lady Gaga, P!nk, Shakira, and Taylor Swift.

# Member of United Scenic Artists (USA)  
+ Member Stage Directors and Choreographers Society



# LYRIC THEATRE

## THELMA GAYLORD ACADEMY



The Thelma Gaylord Academy is a comprehensive training program for beginner through advanced students, including acting, voice, and dance. Scholarships are available to all those in need of financial assistance. If you like what you see today, join us in the spring and it can be you on this same stage!

### SPRING BREAK AND SUMMER CAMPS



SPRING BREAK  
March 17-21

and

SUMMER CAMP  
performing at the Civic Center!  
June 2-22



SUMMER CAMP  
March 17-21

Check out our website  
for more information!

Lyric Thelma Gaylord Academy  
(405) 524-9310 x100 [www.ThelmaGaylordAcademy.com](http://www.ThelmaGaylordAcademy.com)



LYRIC THEATRE OF OKLAHOMA'S

# BROADWAY

*Bash*

## SAVE THE DATE

June 6, 2025

## THE SKIRVIN HILTON

One Park Ave | Oklahoma City

## HONORARY CHAIRS

Ellen, Tim &  
Thomas Fleming

## Sponsorships Available!

Contact Special Events Associate, Mia Sherlock

Mia@LyricTheatreOKC.org

(405) 524-9310 x 220.

For more information visit:

[WWW.BROADWAYBASH.COM](http://WWW.BROADWAYBASH.COM)

All proceeds from the BASH benefit Lyric Theatre of Oklahoma,  
a 501(c)3 non-profit arts organization, and its educational programs.

**MY  
MAGIC  
MORNING SHOW**  
with **JEFF & RACHAEL**

**Magic 104.1 FM**  
**KMGL**



**THE BEST WAY...  
TO START YOUR DAY!**



**AURORA**

**NOW SERVING  
BRUNCH FOR DINNER**

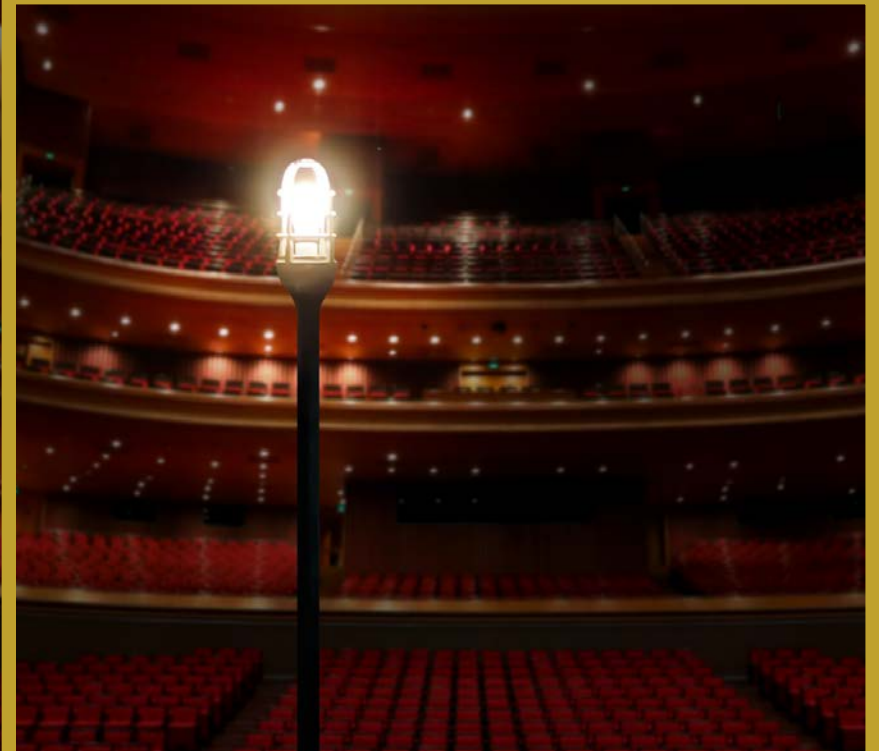
**HAPPY HOUR**  
TUES - SAT · 3PM-6PM

RESERVATIONS:

**(405) 609-8854**

**JOIN US UNDER THE RAINBOW:**  
1734 NW 16th St. OKC 73106





## Innovating Performance

To describe INSURICA as “award winning” would be a dramatic understatement. INSURICA has been recognized with more national awards than ever before, and we believe it is because our industry is recognizing INSURICA’s leadership and the way we are modernizing insurance. At INSURICA, we pride ourselves on **INNOVATION**. We have committed to transform our industry by using data as a weapon, and to serve our customers today and tomorrow with services and expertise. INSURICA is a Best In Class broker of insurance, and we strive every day to help our customers become Best In Class in their respective industries.



We Specialize in You | [INSURICA.com](https://www.insurica.com)





**Wizard of Oz on Ice**  
*A Breathtaking,  
Reimagined Journey*

**2.15.25**



**Dragons & Mythical Beasts**  
*A Spell-Binding  
Adventure*

**2.26.25**



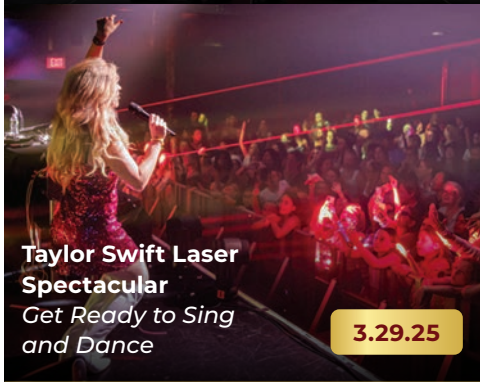
**Spamilton**  
*An American Parody*

**3.7.25**



**Pink Floyd Laser Spectacular**  
*The Music of Pink  
Floyd as You've Never  
Seen Before*

**3.28.25**



**Taylor Swift Laser Spectacular**  
*Get Ready to Sing  
and Dance*

**3.29.25**

A TRIBUTE CONCERT EXPERIENCE LIKE NO OTHER

**R.E.S.P.E.C.T.**

**ONE NIGHT ONLY!**

**R.E.S.P.E.C.T.**  
*A Tribute Concert  
Like No Other*

RIGHT ANGLE

**4.12.25**



OKLAHOMA CITY  
COMMUNITY COLLEGE

Your ticket to  
unforgettable moments!



**FIND SHOW  
INFORMATION  
HERE:**

[occc.edu/tickets](http://occc.edu/tickets)



*Thank you to our  
Signature Sponsor!*



# PHILHARMONIC RISING

2024-2025 SEASON

ARJUN VERMA  
SARAH CHANG  
JEROD TATE  
BEETHOVEN  
& MORE

DEFYING GRAVITY:  
Stephen Schwartz & Friends

PINK MARTINI

MUSIC OF THE  
KNIGHTS:

Andrew Lloyd Webber, Elton John,  
Paul McCartney



SCAN QR CODE  
or visit [okcphil.org](http://okcphil.org)  
or call us at 405-842-5387

NEW  
SUBSCRIBERS  
SAVE **50%**

ALEXANDER WICKELTHORPE  
MUSIC DIRECTOR

**OKCPHIL**  
—orchestrating passion

“A MAGICAL EXPERIENCE!”

Chicago Sun-Times

# Peter Pan

THE HIT BROADWAY MUSICAL



Photo: Matthew  
Murphy

MARCH 18-23 | CIVIC CENTER MUSIC HALL | OKCBROADWAY.COM

OKC  
BROADWAY

2024-2025 SEASON

Sponsored by paycom



# Explore

## THE CHICKASAW NATION

### OKANA Resort and Indoor Waterpark

Oklahoma City, Oklahoma

This family-friendly resort will feature an 11-story, 404 room hotel, a 5-acre outdoor adventure lagoon, a family entertainment center, water park, multiple retail outlets, restaurants, a spa, a First American marketplace, amphitheater and conference center.



### Chickasaw Cultural Center

Sulphur, Oklahoma

Visit the Chickasaw Cultural Center and share in Chickasaw culture, language and history. Experience dynamic performances, demonstrations, collections and exhibits at one of the most extensive tribal cultural centers in the United States.



### McSwain Theatre

Ada, Oklahoma

The McSwain Theatre is a 560-seat former cinema, and present day theater and music venue. The McSwain Theatre is one of Oklahoma's premiere live entertainment venues, with performances featuring all types of music including country, rock, gospel, oldies and more!



### Exhibit C Gallery

Oklahoma City, Oklahoma

Visitors will find a retail shop complete with hand-crafted Chickasaw jewelry, pottery, paintings and clothing. Other retail items include the full line of Bedré Fine Chocolate®, books from Chickasaw Press as well as Chickasaw Country-branded items.



### Bedré Fine Chocolate®

Davis, Oklahoma

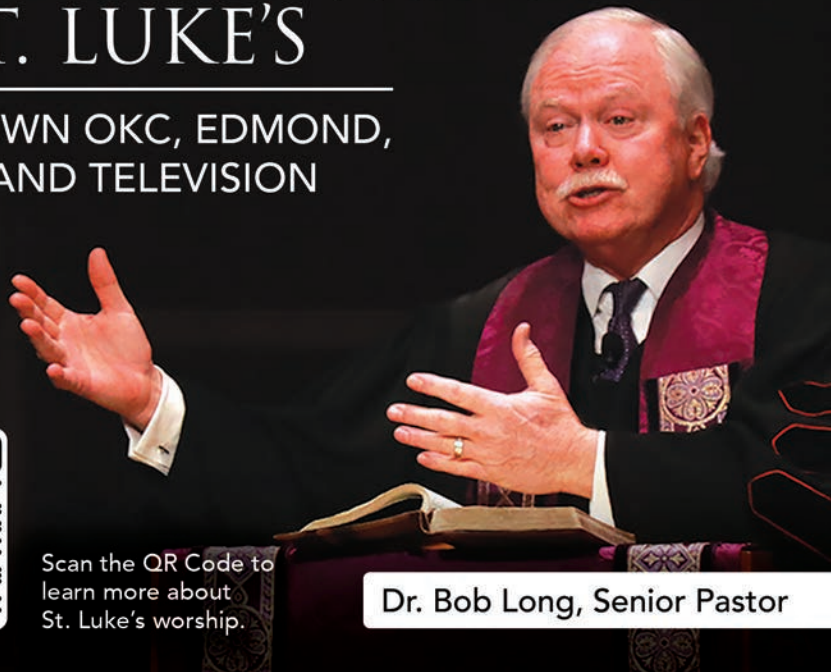
Today, the Chickasaw Nation is the only modern First American tribe to produce gourmet chocolate for your culinary pleasure. Bedré Fine Chocolate® creates gift-worthy premium chocolates for any occasion.



BILL ANOATUBBY, GOVERNOR  
CHICKASAW.NET

# EXPERIENCE WORSHIP AT ST. LUKE'S

DOWNTOWN OKC, EDMOND,  
ONLINE, AND TELEVISION



Scan the QR Code to  
learn more about  
St. Luke's worship.

Dr. Bob Long, Senior Pastor

ST. LUKE'S METHODIST CHURCH

# POTEET THEATRE



LITTLE WOMEN

MARCH 7 - 16, 2025

Disney and CAMERON MACKINTOSH presents  
**MARY POPPINS**  
THE BROADWAY MUSICAL

MAY 2 - 11, 2025



SCAN THE QR CODE  
TO PURCHASE TICKETS

\$30 - Adults

\$25 - Senior (55+)

\$10 - Children (12 and under)



222 N.W. 15th Street, OKC, 73103 | [stlukesokc.org/poteet](http://stlukesokc.org/poteet)

# ***SHOW BIZ DANCEWEAR***

4427 NW 63rd St, OKC, OK 73116  
405-840-4406  
SHOWBIZDANCEWEARABOUTIQUE.COM



**Trained Pros to keep you on your toes with the best in bodywear and shoes!**

## **BELL & RHODES, PC**



Certified Public Accountants  
14220 Barbour Avenue  
Oklahoma City, OK 73134  
405 341-2863

*Proudly serving the Non-Profit Community in Oklahoma City since 1983*

# LYRIC THEATRE STAFF

---

MICHAEL BARON <sup>+</sup>	Producing Artistic Director
JIM REYNOLDS	Managing Director
ASHLEY WELLS <sup>+</sup>	Executive Producer
SUSAN WEBB	Director of Marketing & Public Relations
MIKI GALLOWAY	Marketing Manager
CHARLIE LUDDEN	Director of Development & Capital Campaign
MIA SHERLOCK	Special Programs & Events Associate
SYDNEY LAHODNY	Individual Campaign Manager
ABBY WELCH	Box Office Associate
JAYLYNN NASH	Playbill Sales Associate
PAM BARRYMORE, VAL LIST, SMART MARKETING	Subscription Sales Associates
LAUREN HATHCOAT	Guest Services/Facilities Manager
ROZZ GRIGSBY	Director of Education
LEIA J. VANLUE	Finance Manager
ANGELA G. DAMBOLD	Payroll & Accounts Payable Administrator
JEFFREY MEEK	Costume Director
DAYNA BROWN	Costume Shop Associate/Academy Designer
MATTHEW SIPRESS	Production/Company Manager
BAILEY MAXWELL	Assistant Company Manager/Casting Coordinator
ISABEL DELGADO	Lead Electrician/Lighting Supervisor
MATTHEW ALVIN BROWN	Production & Rental Associate
STEVEN GILLMORE	Technical Director
JOSIE WALLEY	Scene Shop Manager
EMORIE MANSUR	Charge Artist
JAMES TABOR	Lead Carpenter
PATE SPENCER, LUKE EDDY	Carpenters

## WAITRESS Production Staff

---

BAILEY MAXWELL	Company Manager
RIORDAN BANKS	Dance Captain
BRIELLE NORLIE, KYRA NICHOLE RHOADES	Assistant Stage Managers
JOSIE WALLEY	Deck Supervisor
SKYLAR SELBY	Lighting Board Operator
NOAH VOTH	Audio Engineer
JAMES ZUMWALT	Carpenter/Lighting Tech/Spot Operator
C. AUGUSTUS MATHEWS	Lighting Tech/Spot Operator
MICHAEL JOBE	A2-Swing/Carpenter
DANNY DE JONG	Prop Crew
LAUREN MCPHERSON	Scenic Painter
SHAE CHAKRABORTY	Wardrobe Supervisor
ALEXIS GASS	Dresser/Wig Crew
SUSAN TETREAU, CHRISTI COUFAL-TUYA	Costume Technicians



Member FDIC

Playing our part to  
enrich our local arts.

Proud to support Lyric Theatre

 **MIDFIRST BANK**  
True to you.

midfirst.com

Now more than ever,  
trusted partner  
has a nice ring to it.

Year after year, **Argent** earns the trust of  
more estate attorneys and their clients in  
Oklahoma and across the nation. It would be  
a privilege to earn yours.



Trust Ingrained.

ArgentTrustOK.com | (405) 848-8899



**Jay D. Parks & Associates**

Certified Public Accountants

**Jay D. Parks**  
CPA, CPLC

Phone: (405) 341-7044  
Fax: (405) 341-1482  
jay@parkscpa.com

2801 S. Bryant  
Edmond, OK 73013  
parkscpa.com



# SEASON SPONSORS

---



SEASON SPONSOR



THE GREAT AMERICAN  
MUSICAL SPONSOR



LYRIC'S FAMILY FAVORITE  
MUSICAL SPONSOR



---

## FOUNDATION & MAJOR SEASON SUPPORT

---



---

## IN-KIND & OTHER SEASON SUPPORT

---



LARSEN MUSIC COMPANY



SOCIAL  
CAPITAL



---

## EDUCATION & ARTS OUTREACH SUPPORT

---

### The Dr. Elliott & Pam Schwartz AEIOU Foundation

Devon Energy Corporation • Allied Arts Educational Outreach Program  
Globe Life And Accident Insurance Company • Inasmuch Foundation  
Kirkpatrick Foundation Inc. • Oklahoma Arts Council  
The Shubert Foundation Inc. • The McGee Foundation

---

## SPECIAL THANKS

---

Walnut Gardens Apartments • Clements Foods • Scissortail Interpreting, LLC • Toast & Coffee

And, to the following organizations who match the gifts of their employees: Devon Energy, AT&T, Bank of America, Boeing, MAP Energy, The Coca-Cola Company, Dell, E.L. & Thelma Gaylord Foundation, Inasmuch Foundation, and Kimray.



THE  
OKLAHOMA  
PREMIERE

# THE SACRED VEIL

ERIC WHITACRE • TONY SILVESTRI

**MAR 1** | CIVIC  
**7:30 PM** | CENTER  
MUSIC  
HALL

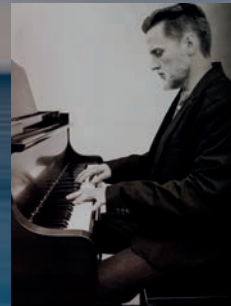
FEATURING



TONY SILVESTRI  
POET/LIBRETTIST



JONATHAN RUCK  
CELLO



DAVID HILLIS  
PIANO

**CALL (405) 232-7464**

[CanterburyOKC.com](http://CanterburyOKC.com) | [OKCCivicCenter.com](http://OKCCivicCenter.com)

SPONSORED BY



# INDIVIDUAL DONORS

Lyric extends its appreciation to all of our generous donors. This list reflects contributions made June 1, 2024 to January 28, 2025 from individuals and family foundations in support of Lyric's programs and activities.

To join Lyric's family of supporters and enjoy the terrific benefits, please contact

**Sydney Lahodny, at (405) 524-9310 ext. 203 or email [Sydney@LyricTheatreOKC.org](mailto:Sydney@LyricTheatreOKC.org) for more information.**

## EXECUTIVE

(\$5,000+)

Ole & Anne Andreassen  
Ed & Matilda Clements  
Randy & Melinda Compton  
Ronna & Lawrence Davis  
Anthony & Teri Gasaway  
Family Charitable Fund  
Mark & Beverly Funke  
Peggy Kates  
Keith & Debbie Long  
Mr. & Mrs. Marty Lopez  
Ellen & Andrew Spiropoulos  
Paula & Carl Stover  
Patricia & Ben Williams  
John B. Williford  
Kevin & Monica Wittrock  
The Dr. Elliott & Pamela Schwartz  
AEIOU Foundation  
Carl & Beth Shortt

## DIRECTOR

(\$2,500-\$4,499)

Carol & Kerry Alexander  
Patricia C. Austin  
Sherry K. Barton  
Phil & Cathy Busey  
Dr. Pramod K. Chetty  
Paul Garrett  
Ellen & Tim Fleming  
Jacquelyn Ford & Jeremy Norwood  
Dr. Eric & Shannon Friedman  
Jan & Ken Goodin  
Darleene A. Harris  
Barbara & Mason Jett, M.D.  
The Honorable & Mrs. Frank Keating  
John & Robin Klaser  
Jake & Barbara Langthorn  
Ryan & Carrie Leonard  
John & Jeannie Lopez  
Paula Love  
Steve Mason/Cardinal Engineering, Inc.  
Lori & David Mathena  
Jean McLaughlin  
Drs. Charles & Jeanne Morgan  
George & Teresa Rhame  
Judy & Richard Riggs  
Gregory Smith  
Brad & Angela Steele

Susan & Mike Turpen

Carolyn T. Zachritz

## CHOREOGRAPHER

(\$1500-\$2,499)

J. Angela Ables  
Leigh Ann & Paul Albers  
Dr. & Mrs. Dewayne Andrews  
Dustin & Sarah Bashaw  
Dr. & Mrs. William L. Beasley  
Elizabeth & Richard Buschelmann  
Dr. William W. Cook  
Dr. Michael & Carolyn Crawford  
Brad Curtis  
Mrs. Anthony Czerwinski  
Karen Delaney  
Tony & Pam Dela Vega  
Drew & Linda Edmondson  
Brad & Celine Ferguson  
Kathy & Jim Frankenfield  
Vicki Gourley  
Jim & Miranda Grant  
Drs. Richard & Marlene Greyson  
Terry & Darlene Haynes  
Vaughn & Theresa Holcer  
Richard R. Horton  
John & Jane Kenney  
Janna & Josh Koehn  
Ann Larson  
Rob & Karen Luke  
MAP Energy  
Jan & Brad Marion  
Mr. Robert S. McKown  
Brian & Charlotte Mitchell  
Marcy & Louis Price  
Leigh Roberts  
Gary & Beverly Rosenhamer  
Lil Ross  
Erik Salazar & Christopher Lloyd  
Danny & Jeannie Stith  
Geoff & Lisa Willis  
Carolyn & Bob Windsor  
Meredith & Mike Wolfe  
Carol Wright

## VIP CLUB

(\$1,000-\$1,499)

Ed & Carol Abel  
Mr. & Mrs. Curt Almen

Roddy & Angel Bates

Dr. Jack & Ruth Beller  
Glenn & Debra Blumstein  
Linda Booker  
Dr. Kyle D. Brotherton  
Greg & Barbara Cable  
Center for Employment Law  
Terri Cooper  
Richard Daniel  
Joel Dixon  
Susan D. & Alton L. Dobbins  
David & Rurie Dobson  
David W. Echols  
Linda Ewerth  
Mari & Arnold Fagin  
Michael & Deborah Felice  
Kay Floyd  
Lori & Bennett Fuller  
Richard Hicks  
Betsy Jett-Gaske  
Melissa Smith-Johnson & Barry Johnson  
Sharon & Charles Johnson  
Faroq Karim  
Debbie Koehn  
JJ & Nikki Kuhn  
Amanda & Rusty Laforge  
Doug & Ginny Lawrence  
Lisa & Ray Lees  
Maccini Construction Company  
Justin & Lindsey Manning  
Larry McClellin  
Dr. & Mrs. W. H. Oehlert  
Jennifer Patterson  
John Plonkey  
Mr. H.E. Rainbolt  
Dale & Phyllis Regier  
Dr. Kathryn Reilly  
Stephen & Mary Ann Schmitt  
Donna R. Smith  
Jonathan Staley  
Stephanie & J.D. Stewart  
Theresa A. & Dr. Virgil Todd  
Scott & Mary Ann Tomlinson  
Sherry & Lonny Towell  
Ron Walters Homes  
Dwayne Webb & Larry D. Buss  
Lisa & Mike Wilkinson  
Diane Wittrock-Hardin



OKC'S #1 MORNING SHOW!

**WEEKDAYS**  
**5:30AM-10AM**

**TJ**  
**JANET**  
**JROD**

**KJ103**

**ON YOUR RADIO AT 102.7FM**  
**AND OUR FREE IHEARTRADIO APP**

# INDIVIDUAL DONORS

---

## LEADING ROLE

**(\$750-\$999)**

Jane & Paul D. Austin  
Anna Brown  
Linda Cavanaugh & William Clark  
Ray Cloer  
Cindy DiTommaso  
Kathryn Dooley  
Bill Durrett  
Sandra & John Fanelli  
Buck & Gladys Feng  
Lynna K. & Heather Geis  
Billy Grayson & Joe Highfill  
Thomas & Rebecca Hill  
Win & Anne Holbrook  
Christina & Don Horvat  
Dr. Peggy Hudson & Paul Rodgers  
Terese & Quinn Irwin  
Diana & Danny Kennedy  
John Koons  
Betty Bellis Mankin  
Brenda & Tom McDaniel  
Andria Medina  
Tami Murphy Landscape Designs, Inc.  
Sean & Anne Nelson  
Edward Oliver  
Charles Oppenheim  
Greg & Janet Peery  
Julie Riddell  
Megan Rooney  
Michele & Douglas Samuels  
John & Carol Wall  
Kari Watkins  
Bill Swigert & Shane Wilson  
Gabe Woolery  
Tonya York

## CIRCLE OF STARS

**(\$500-\$749)**

Anonymous  
Ryan Ackerman  
Carol & Mark Aldridge  
John Arnold  
Teresa Atkinson  
Steve & Kay Ball  
Amy & Roy Bankhead  
Scott Bartel  
Steve & Cheryl Black  
Andrew & Amber Blakeman  
Sharlene S. Branham  
Jeffrey Bonney  
F.W. Pete & Barbara Brown  
Jerry Brown

Frank Bruno  
Ellis Cain  
Rick Cain  
Betty Ann Cole  
Mari Cook Medley  
Marc M. Cortez Jr.  
Thomas Cotrone  
Kathryn Curry  
Micah Davis  
Jim & Patricia Dennis  
Richard & Elizabeth Dobes  
Sid & Toni Ellington  
Dennis & Kay Emery  
William G. Emrich  
Tracy Evans  
Linda D. Garrett  
Debbie & Jim Goodman  
Barre Griffith  
Tamela & Stephen Hamilton  
Sammie & Lauranne Harris  
Nancy J. Hasley  
Rita Hejny  
Cynthia Henderson-Dinauro  
Rick & Jani Hill  
Jamarson LLC  
Terry & Amanda Kordeliski  
Nancy Kruckeberg  
Jason Ledlow  
Gwin Faulconer-Lippert &  
Rick Allen Lippert  
Debra Logan & Darla Hobbs  
Shannon & Michael Love  
James Mack  
Dick & Patti Marshall  
Jeffrey J. & Theresa McDougall  
William & Loa McNeese  
Marilyn & Bud Meade  
Nora Medley  
Harold Mortimer  
Matt Nail  
Mark & Lynn Neumeister  
Norick Family  
Norick Investment Company  
June Ocker  
Paul Pearson  
Ric & Jennie Penner  
Lynn & Travis Pickens  
Colin Raley  
Jack Ransom  
Mary Robbins  
James E. Rushing  
Brent Saffell  
Phil & Avis Scaramucci

Kim & Carol Shumake  
Michele Simon  
Jay Smith  
Tory & Michelle Smith  
Colby & Martha Stone  
Frank Svoboda  
Adam Thomas  
John & Louise Thompson  
Alexandra Towler-Bliss  
Jackie & Dennis Trepagnier  
Savanah Turmel  
Troy & Jennifer VanBrunt  
Kathy Vieth  
Evan & Beth Vincent  
Darlene S. Wallace  
Ashley Weedn  
Linda & Dick Wegener  
William & Lissa Wright

## SUPPORTING ROLE

**(\$250-\$499)**

Anonymous  
Aline & Roy Brown  
Barbara DeMaio  
Steve & Susan Donchin  
Kristy K. Ehlers, Ph.D.  
Glenda Eisenhour/  
Donor Designated Fund  
Mr. & Mrs. Carlos E. Johnson  
Stephen A. Ladner  
Nancy Leonard  
Mary E. Martin, D.D.S.  
Mike & Pam Mowry  
Hannah Nowlin  
Chelsea Parker  
Dr. Eugene & Mrs. Donna Steinberg  
Larry & Leah Westmoreland  
Ryan & Tessa Wicks  
Anne W. Workman

## CHORUS

**(\$100-\$249)**

Anonymous  
Scott & Catherine Anderson  
Lonnie & Cindy Bartel  
Miss Lauren Beausoleil  
Terry & Janet Bergner  
Father Stephen Bird  
Pamela Blevins  
Pamela Bloustine  
Jay Bond  
David & Sherri Boyd  
Jane Bronnenberg  
Jodi Burns



# Above & Beyond AV

Installed AV Technology | Integrated Systems  
Onsite Technical Support | System Maintenance  
In-House Partnerships | Live Event Production  
Creative Services | Rental



SPACES • ONSITE • LIVE

[www.corys.pro](http://www.corys.pro)

# INDIVIDUAL DONORS

Karen Buzzard  
Belinda Callison  
Christine Carpenter  
Sunny Cearley  
Rosemary Cinnamon  
Mary Clark  
Susan A. Clark  
LaTasha & Jeff Craig  
Margaret Cuthbert  
Tary Davis  
Brenna Dixon  
Kelley Dowd  
Bill Dutcher  
Jessica Earley  
Randi Ellefson  
Mark Fitch  
Emilie Golden  
Robert M. Goldman  
Bailey Gordon  
Lyn & Kent Graham  
Neil & Teri Gray  
Kim Haddad  
Jenny Hales  
Patricia & Michael Hensley  
James & Jennifer Hinkle  
Mary & Karl Hirsch  
Jeanne Anne Hubbard  
Garrett Jackson  
MaryAnn Johnson  
Mike Korenblit  
Mike Knedler  
Rick & Ludinia Lahodny  
Blake & Allison Lawrence  
Kristi Leonard  
Kay B. Lewis  
Seth Lewis  
Martin Lopez  
Lance McDaniel  
Wes & Judy Morrison  
Kindt S. Meyers  
Linda & Xavier Neira  
Max Patterson  
Richard Pingrey  
Emily Poppe  
Kathryn Potts  
Steve Powell  
Gary & Judy Ransom  
Judy Reyes-Henderson  
Roy & Julie Rindler  
Dr. & Mrs. Michael Fred Robinson  
Kim Rollins  
Janet & Arthur Russ  
Ashutosh Singh  
Shauna Sneden

Dr. Daniel Snell  
John Spencer  
Ben & Anny Stapp  
Jerry & Karen Stephens  
Jim & Sharon Strate  
Douglas & Susan Stussi  
Sara & Kyle Sweet  
Emily Tate  
Dr. & Mrs. Kenneth G. Thompson  
Winnifred Walden  
Charles Webster  
Paul & Barbara Weigl  
Ben J. Williams  
John Michael Williams  
Mary & Andrea Williams  
Steph Williams  
Wiley & Janet Williams  
Brittney & Jason Wycoff  
Karen Youmans

**SNAP THIS QR CODE  
TO ADD YOUR NAME  
TO LYRIC'S LIST OF  
BELOVED DONORS!**



## IN HONOR & MEMORIAL DONATIONS

### **In Memory of Don T. Zachritz**

Gerry & Kenneth Bonds  
David & Lisa Flesher  
Barbara & Mason Jett, M.D.  
Rob & Karen Luke  
Mr. & Mrs. Robert S. McKown  
Marilyn & Bud Meade  
Deborah D. Minard  
Sharon Neuwald  
Judy & Richard Riggs  
Isa Spoonheim  
Mrs. Daniel R. Stough  
Paula & Carl Stover  
Judge & Mrs. Ralph G. Thompson

### **In Memory of Lou C. Kerr**

William Collins  
Friends of the Mansion  
Yingjie (Ingrid) Gao  
Inasmuch Foundation  
The Honorable Justice Yvonne Kauger  
Mr. & Mrs. Robert S. McKown  
Deborah D. Minard  
John & Lindy Ritz  
Rotary Club of Oklahoma City  
Paula & Carl Stover

**In Memory of  
Elizabeth Kathleen Garrett Willard**  
Paul Garrett

**In Memory of Robbylee Burns Mitchell**  
Cathy S. Westmoreland

**In Memory of Sammie Ruth Harris**  
Paula & Carl Stover

**In Memory of Murray Cohen**  
Paula & Carl Stover

**In Memory of John Abston**  
Paula & Carl Stover

**In Honor of  
Christopher Lloyd & Erik Salazar**  
Cayla Lewis

**In Honor of Paula & Carl Stover**  
Mr. & Mrs. Robert S. McKown

**In Honor of Monica Wittrock**  
Diane Hardin

**In Honor of Randy & Melinda Compton**  
Greg & Pam Johnson

**In Honor of Randy & Melinda Compton**  
Paul Garrett



# BRAUM'S®

# \$1 OFF

# ANY

# DOUBLE

# DIP

# SUNDAE



# \$1 OFF ANY DOUBLE DIP SUNDAE

**Offer expires 12/31/2025 | KEY CODE: 92341**

Choose any Braum's Double Dip Sundae & receive \$1.00 off with this coupon. Limit one coupon per transaction. Cannot be combined with any other offer or promotion. Prices may vary by store location.



This coupon was redeemed on \_\_\_\_\_ at \_\_\_\_\_  
DATE STORE LOCATION



# BOARD OF DIRECTORS

---

## EXECUTIVE COMMITTEE

DR. ERIC FRIEDMAN .....	<i>President</i>
ELLEN SPIROPOULOS .....	<i>President-Elect</i>
MONICA WITTRÖCK .....	<i>Immediate Past President</i>
LORI MATHENA .....	<i>Secretary</i>
CARRIE LEONARD .....	<i>Vice President of Development</i>
BLAKE LAWRENCE .....	<i>Vice President of Education</i>
JIM GRANT .....	<i>Vice President of Facilities</i>
MEGAN ROONEY & MATT NAIL.....	<i>Co-Vice Presidents of Finance</i>
JJ KUHN .....	<i>Vice President of Marketing</i>
SCOTT BARTEL .....	<i>Vice President of Governance</i>
CAROL RINGROSE-ALEXANDER .....	<i>Member-at-Large</i>
ELLEN FLEMING .....	<i>Member-at-Large</i>
BRAD FERGUSON .....	<i>Member-at-Large</i>

## BOARD MEMBERS

Rachel Benbrook	Alicia Ortwein
Payton Bell	Richard Riggs
Olivia Cassil	Gary Rosenhamer
Edward Clements	Pam Shanklin
David Dobson	Carl Shortt
Toni Ellington	Dr. Pooja Singhal, M.D.
Kay Floyd	Brad Steele
Brenda Hernández	Britta Thrift
Janet Hudson	Dr. Patricia Williams, M.D.
Rachel Jamieson	Meredith Wolfe
Farooq Karim	Tonya York
Christopher Lloyd	Emily Yowell
Paula Love	
Robert S. McKown	<b>LAPS Co-Chairs</b>
Scott McLaws	Kristin Goodale
Sarah Moore	Cassie Alexander

## EMERITUS BOARD MEMBERS

J. Angela Ables	Dee Hessel	Keith Long
Patricia Austin	L. Win Holbrook	Paula Stover
Gail K. Beals	Richard R. Horton	Mary Deane Streich
Randy Compton	Barbara Jett	Jon Trudgeon
Dr. David Flesher, M.D.	Ginny Lawrence	Mike Turpen, Esq.
Linda Garrett	Robin J. Lister	

# LYRIC — UNDERSTUDIES

**Become a member of our vibrant community of theatre lovers and enjoy exclusive ticket discounts, special event access, and so much more!**



**JOIN TODAY!**

**Upcoming Events**  
**Showtune Sing-Along Brunch!**  
**Featuring the music from**  
**OKLAHOMA!**

**Follow us everywhere @lyricunderstudies to stay informed about upcoming events.**



# NEW YORK CITY

**HOLIDAY  
THEATRE TOUR**  
DEC. 7-11, 2025

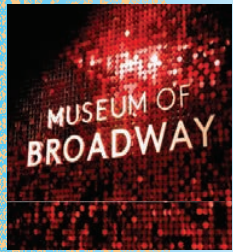


## Your Theatre Tour Includes:

- 5 Days / 4 Nights at the InterContinental Times Square
- 3 Theatre Productions
- Radio City Christmas Spectacular
- Museum of Broadway
- Radio City Music Hall Tour
- Breakfast & Theatre Talk
- 2 Group Dinners
- Hudson Theatre Tour
- Lincoln Center Tour
- Theatre Workshop
- Apollo Theater Tour
- Broadway-up-Close Walking Tour

**\$4970**  
per person based on Double Occupancy including Airfare

Extra Night — \$600 —  
Single Supplement — \$1,195 —



**OPTIONAL GROUP  
AIRFARE FROM  
OKLAHOMA CITY**  
— \$500 —

For more info contact Break-Away Tours:  
**1-800-962-7325**  
[info@break-awaytours.com](mailto:info@break-awaytours.com)



LYRIC THEATRE  
OF OKLAHOMA

2025 SEASON!



# Waitress

A SLICE OF MUSICAL HEAVEN

Feb. 12-March 2 • Lyric at the Plaza



A BOLD NEW PLAY BY OCTAVIO JOLIS

# MOTHER ROAD

April 2-19 • Lyric at the Plaza

# JOSEPH AND THE AMAZING TECHNICOLOR DREAMCOAT



June 17-22 • Lyric at the Civic



# Beautiful

THE CAROLE KING MUSICAL

July 8-13 • Lyric at the Civic

# RODGERS & HAMMERSTEIN'S Oklahoma! THE OFFICIAL STATE PRODUCTION



July 29-Aug. 3 • Lyric at the Civic



Oct. 2-Nov. 1 • Lyric at the Plaza



Nov. 28-Dec. 28 • Lyric at the Plaza

Call (405) 524-9310

OR visit

LyricTheatreOKC.com TODAY!



SCAN FOR MORE INFORMATION!