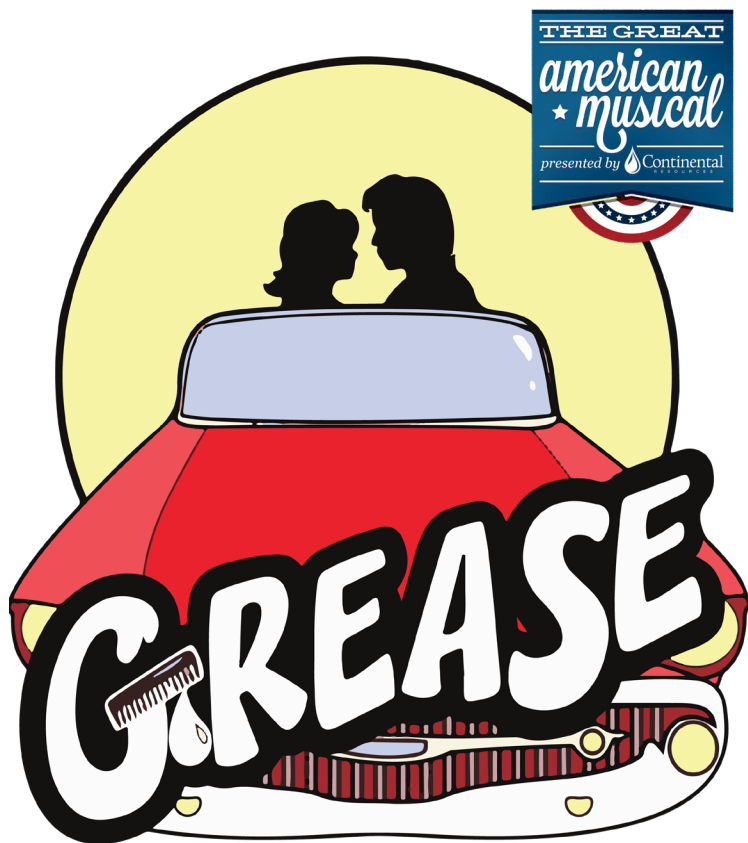


LYRIC THEATRE OF OKLAHOMA



JUNE 15-27, 2021

**BISHOP MCGUINNESS CATHOLIC HIGH SCHOOL
PRIBIL FOOTBALL STADIUM**



ECHOLS & ASSOCIATES

OKLAHOMA'S TOP RATED MATRIMONIAL LAWYERS



Jonathan D. Echols, David W. Echols, Amy L. Howe and Kyle L. Endicott

Established in 1979, the law firm is primarily engaged in contested and complex family law litigation. The firm's four attorneys, with a combined experience of over 80 years in the practice of Family Law, have dedicated themselves to helping their clients find their future, while honoring their past, through compassionate, knowledgeable and experienced representation.

The firm has received numerous accolades, including recognition for many years by the Bar Register of Preeminent Lawyers rated by Martindale-Hubbell for legal ability and highest professional standards.

9925 South Pennsylvania Avenue
Oklahoma City, OK 73159

www.echolslawfirm.com
(405) 691-2648



WE ARE HONORED TO SUPPORT LYRIC THEATRE

In the last 38 years, Express Employment Professionals has put millions of people to work across North America, South Africa, and now Australia and New Zealand. With more than 830 franchise locations and an International Headquarters based right here in Oklahoma City, Express strives to provide hope through employment.

Producing Artistic Director's Welcome

Welcome Lyric friends!

We are so excited to have you with us for this spectacular production of GREASE here at Bishop McGuinness Catholic High School Pribil Football Stadium. In the tradition of GREASE – and summer musicals at Lyric – this year, “We Go Together!” has new meaning. With our nation opening up due to the miracle of highly effective vaccines, Lyric is so happy to bring people together once again to enjoy this great American musical on a scale like you’ve never seen it before! I would like to thank Principal David Morton, Brett Young, Matt Avra, and everyone at Bishop McGuinness for their excitement and generosity in hosting Lyric Theatre on their beautiful campus. A special thank you also goes out to Dave Saunders and the Canadian River Cruisers for the use of their classic cars, and to Diana Williams, Yukon High School Band Director, for coaching our teen ensemble in the precision skills of color guard.

GREASE is celebrated all over the world for its music, dancing and 1950s iconic characters. When we decided to move our 2021 productions outdoors this year, we knew GREASE had to take place at a historic football stadium here in Oklahoma City. We also knew we had to take advantage of this epic setting and re-envision the show in a new way. Drawing from my years of marching band experience playing the alto saxophone at William R. Boone High School in Orlando, Florida, I have gathered all of the elements that make a half-time show truly spectacular – a cast of 60, moving platforms and towers, color guard pageantry, and many more surprises along the way. Our awesome stage manager, Caroline Mueller, also graduated from Boone High School. I’m the Class of 1988, and she is the Class of 2017 – proving GREASE is a multi-generational American classic! The energy of Lyric’s production matches the excitement we have in bringing live musical theatre back to our city after a year of shut-downs, shut-ins and uncertainty. We simply can’t wait to share the memories of high school while we create new ones for you, our audience, with each and every performance.

Remember, tickets are now on sale for all of our 2021 shows. Next up is the Tony Award-winning play, MASTER CLASS – inspired by one of the greatest opera divas of all time, Maria Callas! Lyric’s production will feature live opera under the stars in the colorful Autumn setting of the Myriad Botanical Gardens. Then, in a full-circle moment, we are back where our outdoor adventures began ... at the historic Harn Homestead for Lyric’s nationally-acclaimed, immersive production of Lyric’s A CHRISTMAS CAROL.

We are here because of you and the support of our great city. We are Oklahoma Strong, both onstage and off, throughout the year. I thank you for believing in Lyric, and the importance of the arts, as we continue our outdoor theatrical adventures and prepare for our eventual return to indoor performances. And, now, enjoy the fresh air and the students of America’s most famous high school...RYDELL!

Grease is the word,

Michael Baron
Producing Artistic Director



Responsibly fueling a
better world.

Continental Resources is proud
to support Lyric Theatre and their
mission to enrich the quality of
life for the people of Oklahoma.



CLR.com



INSPIRING TOMORROW'S BUILDERS

Our next generation of problem solvers just need a little spark. That push, to explore their innate curiosity. So encourage our next generation's builders. Cultivating their ingenuity will help design our future and create a better way of life.

Encouraging ingenuity.

SCIENCE . TECHNOLOGY . ENGINEERING . MATH



@DevonEnergy



CONTINENTAL RESOURCES



LYRIC THEATRE OF OKLAHOMA

MICHAEL BARON, PRODUCING ARTISTIC DIRECTOR

JIM REYNOLDS, MANAGING DIRECTOR

PRESENT



BOOK, MUSIC AND LYRICS BY
JIM JACOBS & WARREN CASEY

SCENIC DESIGNER
KIMBERLY POWERS ^

COSTUME DESIGNER
JEFFREY MEEK

LIGHTING DESIGNER
FABIAN J. GARCIA

TECHNICAL DIRECTOR
ADAM BRAND

SOUND DESIGNER
COREY RAY

MUSICAL DIRECTOR
ERIC GRIGG

PROPERTIES DESIGNER
COURTNEY STRONG

WIG DESIGNER
BRAWNA BRINKLEY GFELLER

CHOREOGRAPHY
VINCENT SANDOVAL

STAGE MANAGER
CAROLINE MUELLER

DIRECTED BY
MICHAEL BARON +

+Member of Stage Directors and Choreographers Society (SDC)

^ Member of United Scenic Artists (USA)

NAMT
NATIONAL ALLIANCE FOR
MUSICAL THEATRE

SDC STAGE
DIRECTORS AND
CHOREOGRAPHERS
SOCIETY

GREASE is presented by special arrangement with Samuel French, Inc., a
Concord Theatricals Company. www.concordtheatricals.com



The arts bring
us together!

Allied Arts is proud to support more than 40 local nonprofit arts and cultural organizations annually, including Lyric Theatre. Together, we reach approximately one million people each year statewide with inspiring, educational and community-building programming.



DONATE TODAY.

alliedartsokc.com/donate

Musical Numbers

"Grease"	Company
"Rydell Alma Mater" / "Rydell Alma Mater Parody"	Company
"Summer Nights"	Sandy, Danny, Greasers, Pink Ladies
"Those Magic Changes"	Doody, Greasers, Pink Ladies, Ensemble
"Freddy, My Love"	Marty, Sandy, Pink Ladies
"Greased Lightnin'"	Kenickie, Greasers, Ensemble, Teen Chorus
"Mooning"	Roger, Greasers, Pink Ladies, Ensemble
"Look at Me, I'm Sandra Dee"	Rizzo, Sandy, Sonny, Pink Ladies
"We Go Together"	Sandy, Danny, Company
"It's Raining on Prom Night"	Sandy, Radio Voice
"Shakin' at the High School Hop"	Company
"Born to Hand Jive"	Company
"Hopelessly Devoted"	Sandy
"Beauty School Dropout"	Frenchy, Teen Angel, Female Ensemble
"Sandy"	Danny
"Rock N Roll Party Queen"	Pink Ladies, Greasers, Sandy, Ensemble
"There are Worse Things I Could Do"	Rizzo
"Look at Me, I'm Sandra Dee"	Sandy
"You're the One that I Want"	Danny, Sandy, Company
"We Go Together"	Danny, Sandy, Company

**There will be a limited, 5-minute timeout halfway through the show.
The concession stand and restrooms are available throughout the performance.**

Show Sponsors





THE ARTESIAN

HOTEL • CASINO • SPA

Visit ArtesianHotel.com to plan your stay now!

Cast



Joe Caskey
Danny



Sydney Jones
Sandy



Faith Flanders
Patty



Carter McPherson
Eugene



Barbara Fox DeMaio
Miss Lynch



Antonio Rodriguez
Johnny Casino/Teen Angel



Gonzalo Aburto de la Fuente
Sonny



Anette Barrios-Torres
Jan



Gabby Rae Jimenez
Rizzo



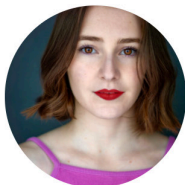
Gabriel Lemus
Roger



Caleb Barnett
Kenickie



Joel Stephens
Doody



Anna McGuire
Frenchy



Payton Ravoe Bioletto
Marty



Bianca Bulgarelli
Cha Cha



TJ Brown
Vince Fontaine



Alisha Jury
Ensemble



Rodney Thompson
Ensemble



Bryson Jacobi Jackson
Ensemble



Holly O'Neal
Ensemble

Cast



Jayson Gorton
Ensemble



Erin Thompson
Ensemble



Catie Leonard
Ensemble



Jessica Cajina
Ensemble



Easton Edwards
Ensemble



Delaney Horton
Ensemble



Henry Evans
Ensemble



Abby Hesselroth
Ensemble



Jamaal Jackson
Ensemble



Henry Cargill
Ensemble

Teen Chorus

Lyric's production features a cast of more than 60 actors, including our Teen Chorus:

Addison Bassemier
Alicia Hunter
Amelia Castor
Autumn Hudgins
Brady McComas
Carson Burton
Cathy Nguyen
Eden Hilliard
Elizabeth Maimo
Ella Hurst
Ella Misialek

Gabriel Osburn
Grace Pierce
Gracie Boyd
Hallie Hunt
Hanna Andreassen
Jaylynn Nash
Jessie Barton
Justine Rogers
Kaden Fitz
Katie Spiropoulos
Kiara Tournear

Liberty Murphy
Lilia Castor
Lizzie Jones
Lucy Castor
Molly Norton
Nate Peterson
Reece McAbee
Sierra Isbill
Sophia Lopez
Stephanie Medrano



PARRISH
DEVAUGHN

Injury Lawyers

WE'RE DEDICATED TO
HELPING OKLAHOMANS
WITH THEIR PERSONAL
INJURY & WORKERS
COMPENSATION LEGAL
NEEDS.



7 S. MICKEY MANTLE DRIVE, SECOND FLOOR, OKLAHOMA CITY, OK 73104
WWW.PEPPERWINS.COM

INJURED IN THE STATE OF OKLAHOMA?

Call us today for a ***free*** and ***confidential*** consultation.

(405) 444-4444

PROTECTING THE RIGHTS OF OKLAHOMANS
AND CHANGING THE WAY PEOPLE VIEW
LAWYERS, ONE RELATIONSHIP AT A TIME.



FOLLOW US:



Who's Who In The Cast

GONZALO ABURTO DE LA FUENTE (*Sonny*) is making his Lyric Theatre debut. OTHER THEATRE: *Songs for a New World, Into the Woods, Dogfight, Cabaret, Legally Blonde, Grand Hotel*, University of Oklahoma. ADDITIONAL CREDITS: B.F.A from the University of Oklahoma.

CALEB BARNETT (*Kenickie*) is making his Lyric Theatre debut. REGIONAL THEATRE: *Carrie!, Sweeney Todd, Rock of Ages, Bloody Bloody Andrew Jackson, Casa Mañana; Hair the Musical*, Oklahoma City Repertory Theatre. OTHER THEATRE: *Mamma Mia!, Garland Summer Musicals; The Most Happy Fella, Joseph and the Amazing Technicolor Dreamcoat, Big Fish, Rock of Ages*, University of Central Oklahoma. OTHER CREDITS: B.M. from the University of Central Oklahoma.

ANETTE BARRIOS-TORRES (*Jan*) is making her Lyric debut. OTHER THEATRE: *The Consul*, Oklahoma City University; *In the Heights, The Hunchback of Notre Dame, Sweet Charity*. ADDITIONAL CREDITS: B.M. from Oklahoma City University.

PAYTON RAVOE BIOLETTA (*Marty*) is making her Lyric Theater debut. OTHER THEATRE: *Spring Awakening, Little Women, What We Scream Underwater When No One Can Hear Us, The Crucible*. ADDITIONAL CREDITS: B.F.A. from Texas State University.

TJ BROWN (*Vince Fontaine*) is making his Lyric Theatre debut. REGIONAL THEATRE: *Oliver!, Kismet Arts Studio & Theatre; To Kill A Mockingbird*, Poteet Theater; *Rumors*, Spencer Theatre. OTHER THEATRE: OKC Improv, Whodunit Dinner Theater. RADIO: Host, TJ, Janet & JRod in the Morning, KJ103.

BIANCA BULGARELLI (*Cha-Cha Digregorio*) – AT LYRIC: *Singin' in The Rain*. REGIONAL THEATRE: *Unmaking of Toulouse Lautrec*, Bated Breath Theatre Co.; *Sense and Sensibility*, Oklahoma Shakespeare in the Park. OTHER THEATRE: *Grand Hotel, Cabaret*, University of Oklahoma.

JESSICA CAJINA (*Ensemble*) is making her Lyric Theatre debut. REGIONAL THEATRE: *West Side Story, Pippin*. OTHER THEATRE: *Sweet Charity, Nine, Grease, The Most Happy Fella*, University of Central Oklahoma. ADDITIONAL CREDITS: B.M. from the University of Central Oklahoma, Member of Kaleidoscope Dance Company and Abstrakt Mindz Hip Hop Dance Company.

HENRY CARGILL (*Ensemble*) – AT LYRIC: *Mary Poppins, Fiddler on the Roof*. REGIONAL THEATRE: *Little Women, Legally Blonde, Les Miserables, Oklahoma!, Sooner Theatre; The Hunchback of Notre Dame*, Kismet Arts Studio; *Into the Woods*, Poteet Theatre. OTHER CREDITS: *Raising Ma'zaska*, Yale Indigenous Performing Arts Program.

JOE CASKEY (*Danny Zuko*) — AT LYRIC: *Titanic the Musical*. REGIONAL THEATRE: *Bright Star*, East Dallas Arts. OTHER THEATRE: *The Consul, Spamalot: a socially distant concert-ish version!, A Little Night Music*, Oklahoma City University. ADDITIONAL CREDITS: B.M. from Oklahoma City University.

BARBARA FOX DEMAIO (*Miss Lynch*) – AT LYRIC: *Titanic the Musical*. OTHER THEATRE: *A Funny Thing Happened on the way to the Forum*, CityRep; *Bon Appetit!, The Medium and Il Barbiere di Siviglia*, Painted Sky Opera. ADDITIONAL CREDITS: BM and MM from Oklahoma



Making a Difference

American Fidelity was founded on the idea of helping others, and giving back to our community is a big part of who we are. The American Fidelity Foundation is proud to support artistic endeavors and the efforts of Lyric Theatre.

foundation.americanfidelity.com



**American Fidelity
Foundation**

a different opinion



SB-33242, American Fidelity Assurance Company



WEITZENHOFFER FAMILY COLLEGE OF FINE ARTS
**WEITZENHOFFER SCHOOL
OF MUSICAL THEATRE**
The UNIVERSITY of OKLAHOMA



Exceptional.
Inspirational.
Original.

Songs for a New World, Fall 2020
Wendy Mutz Photography

musicaltheatre.ou.edu

The University of Oklahoma is an equal opportunity institution. www.ou.edu/eoo

City University, DMA in Vocal Pedagogy from Shenandoah Conservatory, Executive Director of Painted Sky Opera, Assoc. Prof. of Voice at the University of Central Oklahoma.

EASTON EDWARDS (*Ensemble*) – AT LYRIC: *Newsies*. REGIONAL: *Hair*, Oklahoma City Repertory Theatre; *Bring It On*, Pollard Theatre. OTHER THEATRE: *The Most Happy Fella*, *My Fair Lady*, *Chicago*, *Saturday Night Fever*, University of Central Oklahoma. ADDITIONAL CREDITS: B.M. from the University of Central Oklahoma. @east_edwards

HENRY EVANS (*Ensemble*) is making his Lyric Theatre Debut. OTHER THEATRE: *Shrek the Musical*, *Joseph and the Amazing Technicolor Dreamcoat*, *The Actor's Nightmare*, *The Good Doctor*, *Holes*, *The Spitfire Grill*, *The 25th Annual Putnam County Spelling Bee*, Heritage Hall Performing Arts. ADDITIONAL CREDITS: Attending the University of Florida.

FAITH FLANDERS (*Patty Simcox*) – AT LYRIC: *Disney's When You Wish*. OTHER THEATRE: *Hairspray*, *Thoroughly Modern Millie*, *Legally Blonde*, *Into the Woods*, *Seussical*. ADDITIONAL CREDITS: B.F.A from Point Park University, Associate for Broadway Dreams Foundation.

JAYSON GORTON (*Ensemble*) – AT LYRIC: *Fiddler on the Roof*, *Big Fish*. REGIONAL: *Little Women*, *Guys and Dolls*, *Little Mermaid*, *Elf The Musical*, *Sister Act*, *All Shook Up*, *Anything Goes*, *Hairspray*, *Legally Blonde*, *Les Miserables*, *Oklahoma!*, *Sooner Theatre*. *The Oklahoma Nutcracker*, Norman Ballet Company.

ABBY HESSELROTH (*Ensemble*) – AT LYRIC: *Singin' in the Rain*, *Billy Elliot*. OTHER THEATRE: *Little Women*, *The Little Mermaid*, *All Shook Up*, *Hairspray*,

Our Town, *Sooner Theatre*. ADDITIONAL CREDITS: Will pursue B.F.A from the University of Oklahoma.

DELANEY HORTON (*Ensemble*) – AT LYRIC: Lyric's *A Christmas Carol*. REGIONAL THEATRE: *The 25th Annual Putnam County Spelling Bee*, *Urinetown*, *Once Upon A Mattress*, *The Realm*, *The Addams Family*, *Spamalot*, *Some Assembly Required*, *Marvel One Acts*, Lyric's *Thelma Gaylord Academy*. OFF-BROADWAY: *Sticks and Stones*. TELEVISION: *I'm Coming Home*. OTHER THEATRE: *Hidden in the Spotlight*, Oklahoma City University. ADDITIONAL CREDITS: Kristin Chenoweth's *Broadway Bootcamp 2018 & 2019*, Kristin Chenoweth's *My Love Letter to Oklahoma*.

JAMAAL JACKSON (*Ensemble*) – AT LYRIC: *Singin' in the Rain*. OTHER THEATRE: *Thoroughly Modern Millie*, *13*, *Elf*, *Oliver*, *A Chorus Line*, *Madagascar*, *Crazy For You*, *Mary Poppins*, *Hairspray*, *The Lion King*, *Artworks Academy*; *Willy Wonka*, *Sooner Theatre*.

GABBY RAE JIMENEZ (*Rizzo*) is making her Lyric Theatre debut. OTHER THEATRE: *Chicago*, Courtyard Theatre; *Beauty and the Beast*, Artisan Centre Theatre; *Band Geeks*, *21 Chump Street*, *RENT*, University of Central Oklahoma; *Annie*, *25th Annual Putnam County Spelling Bee*, *Once Upon a Mattress*, Colleyville Heritage High School. ADDITIONAL CREDITS: BM from the University of Central Oklahoma.

SYDNEY JONES (*Sandy Dumbrowski*) is making her Lyric Theatre debut. REGIONAL THEATRE: *South Pacific*, Stages St. Louis; *Road Dahl's Matilda*, *Footloose*, *Jersey Boys*, The MUNY. OTHER THEATRE: *Spring Awakening*, *Songs For A New World*, *Legally Blonde*, *Into The Woods*, University of Oklahoma. ADDITIONAL CREDITS: B.F.A. from The University of Oklahoma.

Heartland

Personal Connection. Technical Solutions.

Payments | Payroll | Point of Sale
Customer Engagement | Capital

Heartland.us



A Global Payments Company

BRYSON JACOBI JACKSON (*Ensemble*) is making his Lyric Theatre debut. REGIONAL THEATRE: *Sweeney Todd*. OTHER THEATRE: *Into the Woods*, *Songs For A New World*, *Grand Hotel*, the University of Oklahoma.

ALISHA JURY (*Ensemble*) is making her Lyric Theatre debut. REGIONAL THEATRE: *Little Shop of Horrors*, *Guys and Dolls*, Theatre Aspen. OTHER THEATRE: *Legally Blonde*, *Grand Hotel*, University of Oklahoma. ADDITIONAL CREDITS: B.F.A. from the University of Oklahoma.

GABRIEL LEMUS (*Roger*) is making his Lyric Theatre debut. OTHER THEATRE: *Songs for a New World*, *Die Fledermaus*, *Zombies of Penzance*, Oklahoma City University. ADDITIONAL CREDITS: B.M. from Oklahoma City University.

CATIE LEONARD (*Ensemble*) – AT LYRIC: *Newsies*, *Hello Dolly!*, *Freaky Friday*, *Fiddler on the Roof*, *The Wizard of Oz*, *Oklahoma!*, *Oliver*. OTHER THEATRE: *Chicago*, *Legally Blonde*, *Marvin's Room*, *Faith County*, Bishop McGuinness Catholic High School Theatre. ADDITIONAL CREDITS: Will pursue B.F.A. from University of Michigan.

ANNA MCGUIRE (*Frenchy*) is making her Lyric Theatre debut. REGIONAL THEATRE: *Singin' in the Rain*, *In the Heights*, *A Christmas Story*, *Best of Broadway*, *Red Hot and Soul*, ZACH Theatre. OTHER THEATRE: *Into the Woods*, *Cabaret*, *Grand Hotel*, *Spring Awakening*, the University of Oklahoma; *Addams Family*, Summerstock Austin. ADDITIONAL CREDITS: B.F.A. from the University of Oklahoma.

CARTER MCPHERSON (*Eugene*) is making his Lyric Theatre debut. OTHER THEATRE: *I Love You You're Perfect Now Change*, *Legally Blonde*, *Into the Woods*, The University of Oklahoma. ADDITIONAL

CREDITS: *Catch Me If You Can*, *Damn Yankees*, *Murder on the Nile*, *Sister Act*, the Cobb County Center for Excellence in the Performing Arts; Musical Director, *Shrek*, *Little Shop of Horrors*, *The Wedding Singer*, The Art Place Mtn. View.

HOLLY O'NEAL (*Ensemble*) is making her Lyric Theatre debut. ADDITIONAL CREDITS: B.P.A from Oklahoma City University.

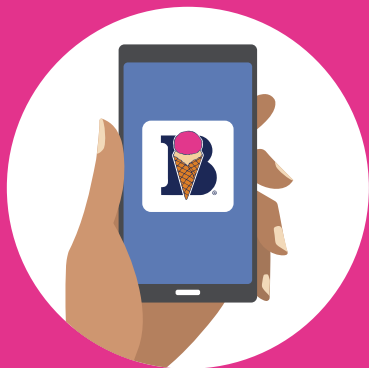
J. ANTONIO RODRIGUEZ (*Johnny Casino/ Teen Angel*) – AT LYRIC: *The Rocky Horror Show*, *When We're Gone*, *Singin' in the Rain*, *Freaky Friday*, *Hello Dolly!* REGIONAL THEATRE: *Footloose*, The MUNY; *Mamma Mia*, City Springs Theatre Company; *Guys and Dolls*, Lyric Stage. FILM: *Dotty & Soul*. OTHER THEATRE: *Hands on a Hardbody*, *City of Angels*, *Grand Hotel*, The University of Oklahoma. ADDITIONAL CREDITS: B.F.A. from the University of Oklahoma.

JOEL STEPHENS (*Doody*) – AT LYRIC: *Titanic the Musical*. OTHER THEATRE: *Rock of Ages*, the University of Central Oklahoma.

ERIN THOMPSON (*Ensemble*) – AT LYRIC: *Lyric Kids' Clubhouse*, *Cat In The Hat*, *Lyric's A Christmas Carol*. *Seussical Jr.*, *The Music Man*, *Urinetown*, *James and the Giant Peach Jr.* OTHER THEATRE: *Kiss Me Kate*, *When We Were Young and Unafraid*, CSAS Black Box Theatre. TELEVISION: *GameStop Commercial*. ADDITIONAL CREDITS: Saxophonist, Pianist.

RODNEY THOMPSON (*Ensemble*) – AT LYRIC: *Titanic the Musical*. OTHER THEATRE: *Spamalot: a socially distant concert-ish version!*, *The Music Man*, Oklahoma City University; *In the Heights* ADDITIONAL CREDITS: The American Spirit Dance Company, B.P.A from Oklahoma City University. @itzlilrodney

FOLLOW LYRIC ON SOCIAL MEDIA FOR THE LATEST SHOW UPDATES!



DOWNLOAD OUR APP

Download the Braum's App or visit **orders.braums.com** to place a Fresh Market order.



ORDER ONLINE

Our Fresh Market has the freshest fruits, meats, vegetables & dairy products - 7 days a week.



USE CODE: **GET5**

When you're ready to check out, use code **GET5** to receive \$5 off your next purchase.

Coupon code only redeemable for Braum's Fresh Market online orders | One time use of coupon code only | Orders must be a minimum of \$20 before applicable tax

Culture is always a worthy investment.

Proud to support Lyric Theatre

True to your money[®]



MIDFIRST BANK

midfirst.com • 888-MIDFIRST (643-3477)



Member FDIC

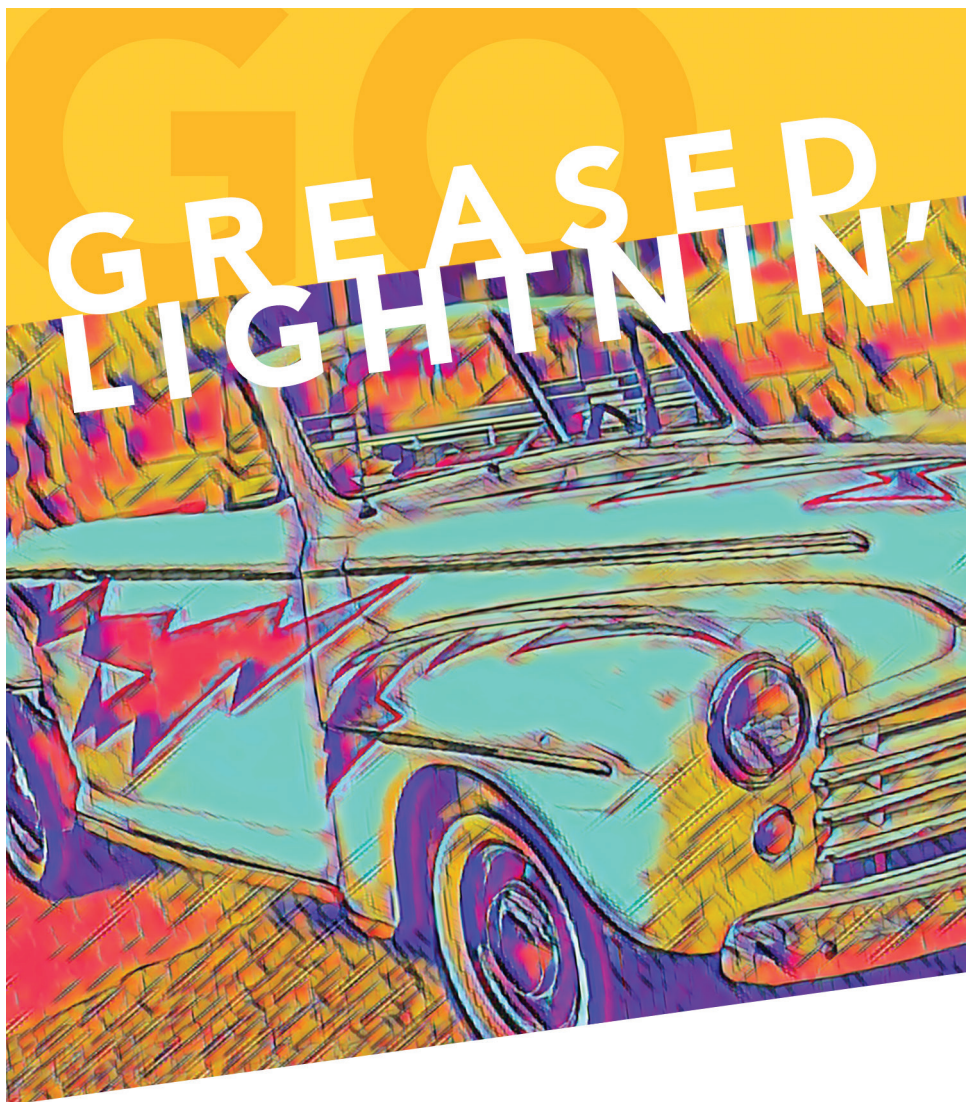
**SERVING OKLAHOMA AND THE
COUNTRY AT MORE THAN 560
LOCATIONS NATIONWIDE WITH
"CLEAN PLACES, FRIENDLY FACES"**

Founded in 1964 by Tom and Judy Love,
Love's Travel Stops & Country Stores is
headquartered in Oklahoma City, Oklahoma,
and remains family owned and operated.



1-800-OK-LOVES
www.loves.com





Proud Sponsor of the
Lyric Theatre of Oklahoma.



W&W | AFco STEEL®

WWAFcosteel.com



What do the arts mean to Oklahoma?

- stronger economy
- enriched culture
- improved academics
- revitalized communities
- creative workforce

An agency of state government • arts.ok.gov



Artistic Staff

ASHLEY WELLS (*Associate Artistic Director*) celebrates 19 years with Lyric Theatre of Oklahoma. AT LYRIC: *Nunsense*, Disney's *Newsies* (Director), *Hello, Dolly!* (Director), *Junie B. Jones* (Director), *Rock of Ages* (Director), *The Wizard of Oz* (Director), *The Fantasticks* (Director/Choreographer), *Bernice Bobs Her Hair* (Choreographer), *Billy Elliot* (Director), *Pageant* (Director), Monty Python's *Spamalot* (Director), *Les Misérables* (Choreographer), *Triangle: A New Musical* (Associate Director), *The Odd Couple* (Director), *Big River* (Choreographer), *Tarzan* (Choreographer), *Some Enchanted Evening* (Director), *Sweet Charity* (Director) with Tony Award-winner Billy Porter, *Spring Awakening* (Choreographer), Lyric's *A Christmas Carol* (Choreographer), *Oliver!* (Choreographer), *The Rocky Horror Show* (Choreographer), *Urinetown: The Musical* (Co-choreographer), *Jesus Christ Superstar* (Choreographer), *Oklahoma!* (Co-Choreographer), *Hello, Dolly!* (Co-choreographer), *Cabaret* (Choreographer/Ensemble), *Chicago* (Choreographer/Merry Murderess). BROADWAY AND NATIONAL TOUR: *Hello, Dolly!* with Carol Channing. REGIONAL: *Phantom of the Opera*, North Shore Music Theatre; *Evita*, *Brigadoon*, *The Music Man*, Music Theatre of Wichita; *La Cage Aux Folles*, Casa Mañana.

VINCENT SANDOVAL (Choreographer) is originally from Houston, TX. Vincent graduated from the High School for the Performing and Visual Arts and earned a Bachelor of Performing Arts in Dance Performance from Oklahoma City University; in both cases receiving recognition as Outstanding Graduating Senior. Vincent went on to pursue his professional career in New York City, Performing Credits: *Radio City Christmas Spectacular*, *Radio City Easter Show*, *Radio City Spring Spectacular* (Featured Singer/Dancer) Broadway Tours: *Crazy For You* (European), *Victor Victoria* (First National), *FOSSE* (First National, Dance Captain).

Vincent is honored to have had the privilege to work with Ann Reinking and Gwen Verdon in the Fosse style of dance. Regional: Lyric Theatre of Oklahoma, Theatre Under The Stars, Casa Mañana, Music Theater of Wichita, and Paper Mill Playhouse. Vincent also appeared with Ballet Austin as Guest Artist. His choreographic credits include *Radio City Christmas Spectacular* (Assistant Director/Choreographer to Linda Haberman), Royal Caribbean International (Rehearsal Director/Choreographer), The American Spirit Dance Company (Choreographer), Summer Stock Austin (Choreographer), Georgetown Palace Theater (Choreographer), Universities: Texas State University Musical Theatre Department (Faculty), Ann Lacy School of American Dance and Entertainment at Oklahoma City University (Present Faculty). Sandoval was nominated for the B. Iden Payne Award, Austin Critics Table Award, and was recognized by Broadway World.com for Outstanding Choreography.

ERIC GRIGG (Music Director) – This is Eric's 20th anniversary with Lyric, where he has worked on more than 60 productions as an associate music director and pit keyboardist. *Grease* marks his debut as a music director for a full Lyric production, after music directing and creating the song list for Lyric's first-ever *Moonlight Cabaret* in September of 2020. Eric is a full-time collaborative pianist and vocal coach at the University of Central Oklahoma, where he has music directed such shows as *Sweet Charity*, *Nine*, and *Theory of Relativity*. He also frequently performs on Pops concerts with the Oklahoma City Philharmonic, where he has played for such Broadway stars as Kristin Chenoweth, Kelli O'Hara, and Megan Hilty.

FABIAN J. GARCIA (*Resident Lighting Designer*) – Three years with Lyric Theatre of Oklahoma. AT LYRIC: *Nunsense*, *Denise Lee: Pressure Makes Diamonds*, *Lyric Kids' Clubhouse*, *Lyric's Moonlight Cabaret*,

Lyric's *A Christmas Carol*, *Having Our Say*, *The Cat in the Hat*, *The Rocky Horror Show*, *Frost/Nixon*, *Curious George: The Golden Meatball*. THELMA GAYLORD ACADEMY: *Tuck Everlasting*, *Lion King, Jr.*, *Mary Poppins*, *Marvel One Acts*, *Honk Jr.*, *Urinetown: The Musical*, *The Music Man*, *The Realm*, *Rokademy Experiment*, *Seussical Jr.*, *The 25th Annual Putnam County Spelling Bee*. LOCAL: *Ragtime & All That Jazz*, *A Classic Christmas*, *The Magic of John Williams*, *Megan Hilty Live!*, *E.T. The Extra-Terrestrial in Concert*, *The Sound of Simon and Garfunkel*, *The Hot Sardines*, *Revolution: The Beatles Symphonic Experience*, *Melinda Doolittle*, *The Magic of John Williams*, *A Classic Christmas*, *Ragtime & All That Jazz*, OKC Philharmonic; *Small Mouth Sounds*, Southern Plains Productions; *She Loves Me*, Oklahoma State University.

KIMBERLY POWERS (*Set Designer*) is delighted to return to Lyric Theatre for *Grease* after designing *Nunsense*, *Denise Lee: Pressure Makes Diamonds*, Disney's *Newsies*, *Titanic: The Musical*, *Hello, Dolly!*, *Mamma Mia*, *West Side Story*, Lyric's *A Christmas Carol*, *Fiddler on the Roof*, *An Inspector Calls*, and *Billy Elliot*. Regionally, she has designed scenery for TheatreSquared (AR), Virginia Repertory Theatre (VA), Charleston Stage (SC), Stages Rep (TX), Southern Rep (LA), Casa Mañana (TX), Lyric Theatre of Oklahoma (OK), and Northern Stage (VT). She was the Resident Set Designer for Ocean State Theatre Company's inaugural season and for Ohio Light Opera, as well as the first Design Assistant at The Denver Center Theatre Company. Kimberly has also been a freelance artist since 2000, and has also worked professionally as a muralist, props master, event designer and coordinator, graphic designer, and exhibit designer. Her work is available to view at kvpowersdesign.com and on Instagram @kvpowersdesign.

JEFFREY MEEK (*Resident Costume Designer*) 22nd season and over 100 productions with Lyric Theatre of

Oklahoma. REGIONAL: Ohio Light Opera: Over 50 productions, including *Lady Kate* - World Premier, *Regrets Only* - World Premier, *The Arcadians* - U.S. Premier, *The Grande Duke* - U.S. Premier; Tulsa Opera: 2003/2004 Seasons; Casa Mañana Playhouse: *Annie*, Disney's *High School Musical*, *A Christmas Carol - The Musical*; Stage One: *I Do, I Do, Are We There Yet?* - World Premier, *Swing*; Eastman School of Music: 3 Seasons; Triad Theatre: *Kids in America*; Colossal Studios: *Family Pirate Adventure*; Adventure Theatre; *James and the Giant Peach* - Helen Hayes Nomination. LOCAL: OKC Philharmonic: 13 years of *A Very Merry Pops*; Reduxion Theatre: 7 Seasons, *Hair*, *Cabaret*, *Sweeney Todd*, *Romeo and Juliette*; Carpenter Square Theatre: *Importance of Being Earnest*, *Maritius*; Oklahoma Children's Theatre: *To Kill a Mockingbird*; Jewel Box Theatre: *Bus Stop*, *Leading Ladies*, *37 Postcards*, *Nunsense II - The Second Coming*, *Suite Surrender*, *South Pacific*. FILM: *Fingerprints*, *Pearl*, *Agenda*.

CAROLINE MUELLER (*Production Stage Manager*) – At LYRIC: Lyric's *A Christmas Carol*, Lyric's *Moonlight Cabaret*, *Titanic*, *Newsies*, *Singin' In the Rain*, *When We're Gone*. *Fun Home*. OKC BALLET: *Firebird*, *Romeo & Juliet*, *Dracula*. OKC CIVIC CENTER FOUNDATION: 2021 *Kelli O'Hara Awards Coordinator*. ADDITIONAL CREDITS: BFA in Design and Production from Oklahoma City University.

COREY RAY (*Resident Sound Designer/ Audio Engineer*) has been with Lyric Theatre for 1 year. AT LYRIC: *Nunsense*, *Denise Lee: Pressure Makes Diamonds*, *Lyric Kids' Clubhouse Cabaret*, *Lyric's Moonlight Cabaret*, Lyric's *A Christmas Carol*. Corey graduated from ACM@UCO in 2014 with a BAT in Music Production and has worked as an audio engineer in the live concert industry for 13 years.

COURTNEY STRONG (*Props Designer*) - 15 years with Lyric Theatre of Oklahoma. LYRIC: Lyric's *A Christmas Carol*, *Rock of Ages*, Disney's *When You Wish*, *Million Dollar*

Quartet, Billy Elliot, Big Fish, Mary Poppins, Oklahoma!, A Little Night Music, Monty Python's Spamalot, Disney's The Little Mermaid, Les Misérables, Tarzan, Big River, The Glass Menagerie, Call Me Madam, Sweet Charity, Ragtime, Oliver!, Steel Magnolias, The Rocky Horror Show, Urinetown: The Musical. LOCAL: *The Christmas Show, OKC Philharmonic; The Secret Garden, Myriad Botanical Gardens.*

BRAWNA BRINKLEY GFELLER (*Wig Designer*) – Seven years with Lyric Theatre of Oklahoma. AT LYRIC: *Tarzan, James and the Giant Peach, The Wizard of Oz, Dreamgirls, Big Fish, Oklahoma!, Hello, Dolly!, Mary Poppins, Billy Elliot, Singin' in the Rain, Newsies, Disney's When You Wish, West Side Story, Fiddler on the Roof, Titanic, Lyric's A Christmas Carol, Bernice Bobs Her Hair, Rock of Ages, Bright Star, Frost/Nixon, Having Our Say, Junie B. Jones, The Rocky Horror Show, Curious George: The Golden Meatball.* UCO: (*Wig Design*) *Sweet Charity, Ain't Misbehavin.* Discovering rainbow metallic eyeshadow as

a child lead her to a career as a professional hair stylist specializing in makeup design. She was on the board of directors for the Oklahoma Cosmetology Association and the Oklahoma Hair and Fashion Committee. Along with teaching makeup classes she traveled while competing in hair and makeup competitions. She won the Oklahoma award in Artistic Hairstyling, also the Beautiful People and Progressive Cut and Styling awards at the International Beauty Show in Dallas. Her love for theatre exploded when a director at Lyric Academy ask her to design makeup for *Cats* in 2011. Since then she has designed makeup, wigs, and costumes for dozens of shows and has worked numerous Broadway National Tours, including: *Hamilton, Lion King, Cats, Les Miserables, Jersey Boys, Book of Mormon, Sound of Music, Cinderella, Miss Saigon, Motown, Kinky Boots, Little Mermaid, Love Never Dies, A Bronx Tale, Fiddler on the Roof, An American in Paris, Camelot, Newsies, Beautiful, On Your Feet, Bullets Over Broadway, Spongebob and The Grinch.*

SHOW BIZ

DANCEWEAR BOUTIQUE



showbizdancewear.com

Trained pros to keep you
on your toes with the best
in bodywear and shoes

NORTH
4427 NW 63rd St.
(405) 840-4406

EDMOND
334 S. Santa Fe
(405) 341-7739

WARREN CASEY (*Author*) was born in Yonkers, New York, and attended Syracuse University. During the late '50s, he learned all about "greasers" while working as an art teacher in upstate New York. He moved to Chicago in 1962, where he hoped to pursue an acting career. He appeared in dozens of productions, including creating the role of Bernie Litko in David Mamet's *Sexual Perversity* in Chicago. He supported himself with jobs in retail, including working as an assistant manager of a chain of apparel stores, and as a record salesman. In the meantime, he taught himself how to play the guitar and began writing songs. Mr. Casey acted with the Chicago Stage Guild (where he met Jim Jacobs), the Old Town Players and the Kinston Mines Theatre. The latter company staged the original production of *Grease*, which he wrote with Jacobs. After the incredible success of both the musical and the movie, the two collaborated on *Island of Lost Coeds*, a musical satire of the B-movies of the 1950s. Mr. Casey died in 1988.

JIM JACOBS (*Author*) Jim Jacobs, who created *Grease* (in 1970) with Warren Casey, was born and raised on the mean streets

of Chicago's far northwest side. During the golden era of rock 'n' roll (1956-1960) he was a guitar-playing "greaser" student at Taft High School. In 1963, Jacobs met Warren Casey when they were both cast in a local theatre production of *A Shot in the Dark*. Seven years later they wrote what was to become one of the greatest musicals of all time. *Grease* opened in 1971 in a former trolley barn called the Kingston Mines Theatre in Chicago. A year later, *Grease* made it to Broadway and "Greasmania" took off, resulting in one of the longest running shows in Broadway history. The 1978 movie became and remains the highest-grossing movie musical of all time. Originally an actor, Jacobs has been seen on television, in motion pictures, regional theatre, national tours, and on Broadway. He is the co-author of several other plays and musicals including *Island of Lost Coeds*, a musical spoof of the low budget sci-fi/horror/jungle movies of the 1950s, which he wrote with Warren Casey. In May 2014, Mr. Jacobs was presented with an honorary doctorate degree from Columbia College in Chicago. He currently resides in Southern California and remains active in the theatre, especially with the American Theatre Company of Chicago.

Production Staff

Kaylene Snarsky	Assistant Choreographer
Emma Hendren, Sydney Bryan, Kristina Lenkowsky	Assistant Stage Managers
Lauren McPherson, Ashlea Stewart	Production Assistants
Jacob Henry	Sound Engineer
Kortney McQuade	Lighting Programmer
Samantha Cox, Alexander Wilson	Electricians
Josie Walley	Carpenter/Electrician
Ethan Wells	Electrician Intern
R. Dilynn Stovall	Sound A2
Abigail Templer	Sound A3
Kolt Schnake	Carpenter
Josiah Brooks, Gabriel Meckling	Carpenter/Welder
Kalani Lewis	Paint Charge
Catherine Pitt	Properties Design Assistant
Cassi Selby, Delaney Marcy	Properties Artisans
Christina Draper	Costume Shop Manager
Gabriella Bastidas	Costumer Designer Assistant
Susan Tetreault	Charge Stitcher
Christi Coufal, Natalie Jacobson	Stitchers
Chloe Mullin, Alix Phelan	Wardrobe Crew

A community without music, art and theatre is like a community with no soul.

Lyric Theatre of Oklahoma, thank you for enriching
Oklahomans' lives for more than 50 years.

We Listen. We Serve.



FRATES | IRWIN

RISK MANAGEMENT SOLUTIONS

▲ ACRISURE[®] AGENCY PARTNER

103 Dean A McGee Ave., Ste. 700, Oklahoma City, OK 73102
(405) 290-5777 • www.fratesinsurance.com

SERVING OKLAHOMA FAMILIES FOR 21 YEARS!



PROUDLY SUPPORTS LYRIC THEATRE

Trust • Investments • Retirement Plans
Oil & Gas • Real Estate • Financial Planning

405-848-8899 • HERITAGETRUST.COM

Lyric Leadership

MICHAEL BARON (*Producing Artistic Director*) At Lyric, he directed *Frost/ Nixon, Titanic, Singin' in the Rain, Bright Star, When We're Gone* (world premiere), Disney's *Freaky Friday, Fun Home*, Disney's *When You Wish, James and the Giant Peach, I Am My Own Wife, Assassins, Fiddler on the Roof, Dreamgirls, Mann... And Wife* (world premiere), *Bernice Bobs Her Hair* (world premiere), *Big Fish* with David Elder and Tony-nominee Emily Skinner, *Oklahoma!*, *An Inspector Calls*, *A Little Night Music* with Tony-nominee Dee Hoty, *Les Misérables, Triangle, Big River, Tarzan, The Glass Menagerie, The Mystery of Irma Vep, Call Me Madam* with Tony-winner Beth Leavel, *Spring Awakening, Ragtime, Oliver!*, *Boeing Boeing, Always... Patsy Cline, December Divas, The Rocky Horror Show* and the annual production of Lyric's *A Christmas Carol* (also adapted). He has directed over 95 productions at theaters across the country including the current production of *A Christmas Carol* at Ford's Theatre in Washington, D.C. Other regional directing highlights include - ZACH Theatre: *Peter and the Starcatcher, Spring Awakening*; Signature Theatre: *The Little Dog Laughed, Songs for a New World* starring Tony-winner Alice Ripley, Tony-nominee Brian D'Arcy James, Emmy-nominee Titus Burgess, and music direction by Jason Robert Brown; Adventure Theatre: *James and the Giant Peach*, the world premiere musical *Big Nate*; Goodspeed Musicals: *Meet John Doe*; Trinity Repertory Company: *The School for Scandal*. La Mama: *The Whore of Sheridan Square* (wrote and directed, published in anthology *Plays and Playwrights* 2006). NEA: 2010-2018 Poetry Out Loud National Competition Finals with hosts, John Leguizamo, Kerry Washington and Anna Deavere Smith. Teaching: American University, Brown University, Holy Cross College and Rhode Island College. Michael has been a theatre

grant panelist for the National Endowment for the Arts and the National Alliance for Musical Theatre. Training: B.A. in Theatre Arts, Wake Forest University; MFA in Directing, Trinity Repertory Conservatory. Michael served as the Associate Director of Signature Theatre in Arlington, Virginia-winner of the 2009 Regional Theatre Tony Award. Michael received the 2012 Helen Hayes Award for Outstanding Direction of a Resident Musical in Washington, D.C. for Adventure Theatre's production of *A Year with Frog and Toad*, the 2016 Oklahoma Governor's Arts Award, and a special award from Oklahoma City Mayor's Committee on Disabilities Concerns. He is a board member for the National Alliance for Musical Theatre.

JIM REYNOLDS (*Managing Director*) joined Lyric Theatre as Managing Director in 2017. He has an accomplished background in arts management, marketing, public relations, project management, strategic planning and customer service. He comes to Lyric from ZACH Theatre in Austin, TX where he held the marketing and public relations director position for 25 years. During his tenure, Jim was an integral part of the theatre's success as it grew from an annual operating budget of \$550,000 to \$8,000,000 during which time the organization opened two new theatre facilities. Prior to that, he was the sales director at Dallas Theater Center, under the artistic leadership of Adrian Hall who is often hailed as a founding father of the American regional theatre movement. Fresh from the University of South Carolina, he served as house manager and ultimately the production business manager at the Alliance Theatre/Atlanta Children's Theatre, the Southeast's leading regional theatre. Jim currently volunteers as Board Chair of the Plaza Business Alliance, which promotes business success in the historic Plaza District.

Lyric Theatre Board of Directors

Executive Committee

Sarah Fisher	President
Monica Wittrock	President-Elect
Brad Ferguson	Immediate Past President
Sarah Moore	Secretary
Carrie Leonard	Vice President of Development
Mollie Bennett McCurdy	Vice President of Education
Richard Riggs	Vice President of Facilities
Meredith Wolfe	Vice President of Finance
Eric Friedman, M.D.	Vice President of Governance
Kurt Carter	Vice President of Marketing
Ellen Fleming	Member-at-Large
David Flesher, M.D.	Member-at-Large
Jim Grant	Member-at-Large

Board of Directors

Carol Ringrose Alexander	Sharlene S. Branham	Ed Clements
David H. Dobson	Brenda Hernandez	Janet Hudson
Lou C. Kerr	Jerry Kuhn	Randy Lewis
Robert S. McKown	Scott McLaws	Lori Mathena
Judy Reyes-Henderson	Gary Rosenhamer	Lesley St. John
Carl Shortt	Dr. Pooja Singhal, M.D.	Ellen Spiropoulos
Mary Deane Streich	Mary Ann Tomlinson	Jon Trudgemon

Emeritus

Angela Ables	Patricia Austin	Gail K. Beals	Gayle Freeman Cook
Linda Garrett	Dee Hessel	Win Holbrook	Richard Horton
Barbara Jett	Ginny Lawrence	Robin Lister	Keith Long
Paula Stover	Mike Turpen	John Winblad	Don T. Zachritz

Ex-Officio

John Bedford, Dean OCU

Lyric Staff

Michael Baron	Producing Artistic Director
Jim Reynolds	Managing Director
Ashley Wells	Associate Artistic Director
Kerrie Brinkman-White	Director of Development
Michael Bratcher-Magallanez	Director of Marketing & Public Relations
Rozz Grigsby	Director of Education
Jeffrey Meek	Resident Costume Designer
Leia J. VanLue	Finance Manager
Mark Walker	Box Office Manager
Matthew Sipress	Company Manager/Production Manager
Adam Brand	Technical Director
Fabian J. Garcia	Resident Lighting Designer/Master Electrician
Corey Ray	Audio Engineer
Matthew Alvin Brown	House Manager
Angela G. Dambold	Payroll & Accounts Payable Administrator
Jenny Brand	Box Office Associate
Glen Toney	IT Consultant

Lyric Theatre Season Sponsors



the
**Chickasaw
Nation**

SEASON
SPONSOR


devon

ARTS OUTREACH TITLE SPONSOR &
LYRIC'S A CHRISTMAS CAROL



THE GREAT AMERICAN
MUSICAL SPONSOR



LYRIC'S FAMILY FAVORITE
MUSICAL SPONSOR



PRESENTING
SPONSOR

FOUNDATION & MAJOR SEASON SUPPORT

AD ASTRA FOUNDATION



E.L. and Thelma Gaylord
FOUNDATION



THE SHUBERT
FOUNDATION INC.



IN-KIND & OTHER SEASON SUPPORT

LARSEN MUSIC COMPANY
WALNUT GARDENS



CHESAPEAKE
ENERGY



MEDIA SPONSORS



okcFRIDAY
Oklahoma Gazette



EDUCATION & ARTS OUTREACH SUPPORT

Allied Arts Educational Outreach Program | Globe Life And Accident Insurance Company
Sonic, America's Drive-In | Carolyn Watson Rural Oklahoma Community Foundation
Wilshire Charitable Foundation | Paycom | The McGee Foundation

Lyric Donors

Lyric extends its appreciation to all of our generous donors. This list reflects contributions made as of June 2 to Lyric's 2021 Annual Fund from individuals, couples, corporations and family foundations in support of our programs and activities. **To join Lyric's family of supporters, please contact Kerrie Brinkman-White, Development Director, at (405) 524-9310 or email Kerrie@LyricTheatreOKC.org for more information.**

DIRECTOR (\$2,500+)

Ole and Anne Andreassen
Gail K. Beals
John and Margaret Biggs
Jill Brown
Dr. Pramod K. Chetty
Reggie B. Cook
Ronna and Lawrence Davis
John and Sandra Fanelli
Ellen and Tim Fleming
Nedra R. Funk
Janet and Kenneth Goodin
Terry and Darlene Haynes
Rose Henrichs and Robert (Bob) Rescinito
John and Janet Hudson
Barbara and Mason Jett
Cathy and Frank Keating
John and Robin Klaser
Keith and Debbie Long
Nancy and George Records
Lance and Cindy Ruffel
Carl and Beth Shortt
Gregory Smith
Grant and Amanda Soderberg
Paula and Carl Stover
Mary Deane Streich
Troy and Jennifer VanBrunt
Don T. and Carolyn T. Zachritz
Lori and Chris Zuest

Steve Mason
Travis Mason
Patricia and Harold Mathena
Sam and Mollie McCurdy
Drs. Charles and Jeanne Morgan
Phyllis and Dale Regier
George and Teresa Rhame
Gary and Beverly Rosenhamer
Lil and William J. (Bill) Ross
Phyllis Sandmann
Jeanne Hoffman Smith
The Bankers Bank
Billie Thrash
Vahla and Tom Todd
Scott and Mary Ann Tomlinson
Jon Trudgeon
Bob and Carolyn Windsor
Kevin and Monica Wittrock
Carol Wright

VIP CLUB (\$1,000-\$1,499)

Ed and Carol Abel
Carol and Kerry Alexander
Marty Askins
Roddy and Angel Bates
Brad O'Neal
Sharlene Branham
Dr. Kyle D. Brotherton
Mrs. C.B. (Jo Carol) Cameron
Michael Clark
Ray Cloer
Randy and Melinda Compton
Robert Corley
Gayle Freeman Cook and Judge
Tom R. Cornish
Carolyn and Michael Crawford, M.D.
Daniel and Jeannie Stith
David and Jean McLaughlin
Jackie Davis
Tony and Pam Dela Vega
Don and Peggy Manning
Carlos and Mary Elwell
Kenneth Fletcher
Dr. and Mrs. Bennett E. Fuller
Terri and Tony Gasaway
Tom and Sandy Goldsworthy
Vicki Gourley
Mike and Gail Grady
Miranda and Jim Grant
Richard Hicks
Barry Johnson
Michael Knam
Dr. Joseph and Susan Kopta
Jake and Barbara Langthorn
Ann Larson
Lisa and Ray Lees
Carrie and Ryan Leonard

Mateja and Stephanie Govich
Lori and David Mathena
Doris and Robert S. McKown
Scott and Michelle McLaws
Mari Medley
Richard Mitchell
Larry and Wanda Myers
Guy and Caroline Patton
Paul and Kelly Pearson
H.E. (Gene) Rainbolt
Dr. Kathryn Reilly
Paula and Gene Reynolds
Judy and Richard Riggs
Michael and Linda Sartin
Claude and Karen Seaman
Richard L. (Dick) Sias
Ella Speakes
Theresa A. Todd and
Dr. Virgil Todd
Stephanie and Glen Toney
Sherry and Lonny Towell
Jill Walker
John and Lou Waller
Daniel and Mary Ward
Dr. Lisa Wasemiller-Smith
Dr. Roland and Kelsey Walters
Lee and Melauna Wescott
Lisa and Mike Wilkinson
Geoff and Lisa Willis
Janell and Randy Young
John Winblad

CHOREOGRAPHER (\$1,500-\$2,499)

Patricia C. Austin
Dr. Jack and Ruth Beller
Glenn and Debra Blumstein
Fred W. (Pete) Brown
Phil and Cathy Busey
Kent Campbell
J Christopher and Ruth Carey
Kurt and Jenny Carter
Edward and Matilda Clements
Cindy and Lewis Coate
David W. Echols
Joel Dixon
Brad and Celine Ferguson
Bryan Fischer
David and Dolly Flesher
Bob and Marca Floyd
Linda Garrett
Dee Hessel
Thomas and Rebecca Hill
Richard R. Horton
Peggy Kates
John and Jane Kenney
Barbara Krei
Doug and Ginny Lawrence
Robin J. Lister

LEADING ROLE (\$750-\$999)

Paul and Leigh Ann Albers
Jerry and Abby Bass
William Clark and Linda Cavanaugh
CEC Corporation
Rochelle and Delbert Converse
Teresa L. Cooper
Teresa Rose Crook
Anthony Czerwinski
Jim and Patricia Dennis
Kathryn and William Dooley
Drew and Linda Edmondson
Gladys and Buck Feng
Kent W. Gardner
David and Alice Giles
Jack E. Golsen
Vic and Wallie Graybill
Shellie and Don Greiner
Shellie and Don Greiner
Melissa Griffith
Judy Hatfield
William Henson
Win and Anne Holbrook
Charles Johnson
Jackie and Mike Jones

94.7
THE BREW
ROCKS

newsradio
1000
KTOK



98.5
El Patrón

KJ103

96.1 KXY



iHeartRADIO

Diana and Danny Kennedy
 Michael L. Kerran
 Nikki and JJ Kuhn
 Paula Love
 Rob and Karen Luke
 Betty Bellis Mankin
 Jan and Brad Marion
 Johnny C. Mccuddy
 Brenda and Tom McDaniel
 Brian and Charlotte Mitchell
 Tami Murphy-Moore and
 Tripp Moore
 Darla Morley
 Edward Oliver
 Jan and Greg Peery
 Tim Pollock
 Gary Porter
 Leigh Roberts
 Patrick Rooney
 Jeff and Debra Rowley
 Michele and Douglas Samuels
 Elliott R. Schwartz, DO
 Jay Smith
 Scott and Lesley St. John
 Dr. Jeff Anderson and
 Erick Stokes
 Colby and Martha Stone
 Steve and NeAnn Trice
 Dwayne Webb
 Anne W. Workman
 Ron Walters Construction
 Services, Inc.

CIRCLE OF STARS (\$500-\$749)

Carol and Mark Aldridge
 Frank Wise and Anita Armstrong
 Jane and Paul D. Austin
 Jay St. John & Sandra K. Ayres
 Arden Barrett
 Sherry K. Barton
 Dr. and Mrs. William L. Beasley
 Mary Bingaman
 A.J. and Janice Bisson
 David and Sherri Boyd
 Greg and Barbara Cable
 Mary Lou Casper
 Michael P. Cassidy
 Dr. Susan Chambers
 Earl and Louise Cheek
 Kristin Cheng
 Brittany and Michael Chumo
 Carolyn R. Coffey
 Betty Ann Cole
 Thomas Cotrone
 Joe H. Crosby
 Betty K. Crow
 Donna and Andrew Cummins
 Ann Deal
 Annette Devore
 David H. and Rurie E. Dobson
 Donna McGinty
 Gail Donnellan
 Kathey A. Duncan
 Echo Energy, LLC
 Glenda Eisenhour
 Kay F. Emery
 Gregory Eppard

Dr. J. Patrick and Carole Jo Evans
 Sarah and Judd Fisher
 P. Kay Floyd
 Frank Bruno and Gina Bruno-Dunn
 Kathy and Jim Frankenfield
 Gayle Freeman Cook and
 Judge Tom R. Cornish
 George and Joanne Orr
 Debby and Jimmy Goodman
 Arron Grantz
 Bill Grayson
 Sharon and Barre Griffith
 Lynn and Scott Guillian
 Faye E. Hall
 Sammie and Lauranne Harris
 Marilyn and David Henderson
 Warren W. Henson, Jr.
 Brenda Hernández
 JC and Sandra Herriage
 Jane and Rick Hill
 Richard and Cindy Homsey
 Mike Hoover
 Christina and Don Horvat
 Jamarson LLC
 James H. Norick Family
 Walter and Christy Johnson
 Kaye H. and Thomas J. Jones
 Russell Kim
 Kimray, Inc.
 Don and Cathy Kirk
 Terry and Amanda Kordeliski
 Gregory Landegger
 Patricia and Bill Lindley
 Gwin Faulconer-Lippert and
 Rick Lippert
 Lou C. Kerr
 Shannon and Michael Love
 Lynna and Heather Geis
 Patti and Dick Marshall
 Gary L. Massad
 Dan and Dianna Masters
 Robert O. McDonald
 Marilyn and Bud Meade
 Meredith Wolfe
 Callie Merritt
 Dr. Allan and Ellen Metz
 Sarah and Mitchell Moore
 Joe Murray
 Kimberly and Steven Myers
 Debbie Nauser
 David and Natasha Neumann
 Mark and Lynn Neumeister
 The Honorable and Mrs.
 Ronald J. Norick
 Vickie Norick
 Oklahoma Allergy & Asthma Clinic
 Paul D. Austin Family Foundation
 Ric and Jennie Penner
 Barbara and James Peters
 Lewis and Linda Pontikos
 Mark and Janet Price
 Mary and Bill Price
 Public Strategies
 Jack Ransom
 Jim and Cindi Rapp
 Chris and Emily Remmert
 Nancy Rivers
 Dr. and Mrs. Michael Fred Robinson

Richard and Linna Robinson
 Barry Roseman
 James E. Rushing
 Carol and Gary Sander
 Phil and Avis Scaramucci
 Stephen and Mary Ann Schmitt
 A. Lee and Janice Segell
 Gayle and Jim Shane
 Ricki V. Sonders
 Andrew and Ellen Spiropoulos
 Lisa A. Springer
 John and Rose Steele
 J. Christopher Sturm
 Dwight Sublett
 Mary Gordon Taft
 Richard and Glenna Tanenbaum
 Beulah and Orville Tate
 Alison Taylor
 Carolyn J. Taylor
 John and Louise Thompson
 Rachel Thompson
 Dr. and Mrs. John Tompkins
 Jackie and Dennis Trepagnier
 Evan and Beth Vincent
 Donna Vogel
 Darlene Wallace
 Linda and Dick Wegener
 Elaine Weise
 Beth and Ed Wells
 Ted and Gail Wernick
 Larry L. and Leah A.
 Westmoreland
 Robert W. White
 Sarah Wienecke
 John Michael Williams
 Larry & Paula Willis
 William Swigert and
 Shane Wilson
 William and Lissa Wright

SUPPORTING ROLE (\$250-\$499)

Judith Besett
 Pam Blevins
 Janet and Edward Bucknell
 Keri Buntyn
 Jean Cantrell
 Doug and Carolyn Chancellor
 Sandra Clapp
 Ann Deal
 Roy K. Dobbins
 Bill Durrett
 Linda Ewerth
 Adele Fergus-O'Brien
 Shannon and Eric Friedman, M.D.
 Eric and Elizabeth Gehr
 Patrick Hayes
 Freddy R. and Julian Hibbard
 Kim McCulley
 Nancy Kruckeberg
 Mark and Susan Ledbetter
 Robert luke
 June C. May, M.D.
 Beverly Perri
 Gary Rafferty
 Brenda Rawlings
 Mike and Carol Rhodes
 Nancy Rivers

THE VIDEOTAPING OR
MAKING OF ELECTRONIC
OR OTHER AUDIO AND/
OR VISUAL RECORDINGS
OF THIS PRODUCTION AND
DISTRIBUTING RECORDINGS
OR STREAMS IN ANY MEDIUM,
INCLUDING THE INTERNET,
IS STRICTLY PROHIBITED, A
VIOLATION OF THE AUTHOR'S
RIGHTS AND ACTIONABLE
UNDER UNITED STATES
COPYRIGHT LAW. FOR MORE
INFORMATION, PLEASE VISIT:
[HTTPS://CONCORDTHEATRICALS.COM/
RESOURCES/PROTECTING-ARTISTS](https://CONCORDTHEATRICALS.COM/RESOURCES/PROTECTING-ARTISTS)



CEC® proudly supports Lyrical Theatre and the Oklahoma City arts. As an engineering firm that is invested in our city's culture and creativity, we are excited for the future and thrilled to be a part.

GET STUFF BUILT RIGHT®

Oklahoma City | Tulsa | Duncan | North Dallas

CONNECTCEC.COM    



Mexican
RADIO

TACOS +
COLD DRINKS

**YOUR NEW SPOT IN THE PLAZA
DISTRICT FOR TACOS
AND COLD DRINKS**

1734 NW 16TH STREET, OKC, OK | 405.900.5608 | MEXICANRADIOOKC.COM

Rotary Club of Oklahoma City
 Anastasia Shirley
 Ben and Anny Stapp
 Martha and Colby Stone
 Alice Story
 Douglas and Susan Stussi
 Tom A. Thomas, Jr. Fund
 Susan and Mike Turpen
 Bill Wade
 Tonia West
 Ryan & Tessa Wicks
 Karen Youmans
 Dean John Bedford and Ms. Jo Rowan

CHORUS (\$100-\$249)

Robert Adams
 David C. Andres
 Gale Ayres
 Janet Basler
 Joanie Batty
 Madeline Baugher
 Dianne Bauman
 Deanna Beatty
 Reverend Stephen Bird
 Pamela Blevins
 Lindsey Bluethman
 Donna B. Bowers
 Sharon and Stewart Brown
 Ken Bullock
 Cheryl Carpenter
 Patrick Case
 Holly Caskey
 Mary Clark
 Lois Clausing
 Mark and Rebecca Clinton
 Jereme Cloud
 Jerry and Karen Conner
 Sally Cortez
 Brandi Coyner
 Lyn Cramer
 Susan Moran and Craig Crowder
 Mary and Bill Crynes
 Rick and Jessica Cunningham
 Rita D'Andrea
 Elaine and Tim DeGiusti
 Barbara Demaio
 Aaron Diehl
 Brenna Dixon
 Susan D. and Alton L. Dobbins
 Penny Egger
 Marcia R. Enos
 Gladys and Buck Feng
 Durwin Gaither
 Barbara Gallivan
 Jeana Gedmin
 Thomas George
 Robert and Carolyn Graham
 Elizabeth Gray
 Drs. Richard and Marlene Greyson
 Michael and Donna Grossman
 Judy Gunter
 Lynnice Hamlin
 Susan L. Hay
 David and Jana
 Cynthia B. Heymans
 Jeanne Anne Hubbard
 Quaye F Hudson

Petra Hutchison
 Dr. Karen & Larry Jennings
 Rebecca Jolley
 Bonnie Kennedy
 Kerri Kirchhoff
 John Koons
 Rick and Ludinia Lahodny
 Gene Lamb
 Richard Lay
 Robert and Mary Leveridge
 Kay B. Lewis
 Robert Link
 Merrilyn and William Livermon
 James Long
 Henry Martin
 Mary Martin, D.D.S.
 Ray Mewhorter
 Veronica Milam
 Eugene Mitchell
 Renee Mixon
 Julie Montgomery
 Morning Star for Spiritual Living
 Jonathon Morris
 Judy and Wes Morrison
 Pam and Mike Mowry
 Kay and Clark Musser
 David and Suzanne Neff
 Sean and Anne Nelson
 Anne Zachritz and
 Jane Ann Norris
 Hannah Nowlin
 Dr. and Mrs. W. H. Oehlert
 Keith Stelting and Carole Owen
 Celia Pate
 Susan Rackley
 Ryan Riffle
 Erica Rixen
 Kasey Rohde
 Anna-Faye Rose
 Claudia San Pedro
 Gayle Scheirman
 Cindy Schultz
 Michael and Marcia Segress
 Ben and Shirley Shanker
 Robert Simma
 Kimberly Simms
 Donna and Randy Smith
 Dori Smith
 Ken and Dianne Smith
 Melissa Smith-Johnson
 Kathryn Stone
 Mary Strasner
 Collin Stroud
 Mike Stuart
 Lisa Synar
 Beulah and Orville Tate
 Lawrence Taylor
 Judson and Jessica Tompkins
 Marc Utle
 Ronald and Jane Walker
 George and Nancy L. Wallace
 Mark Warner
 Betty K. Brown
 Barbara Inez Craig Weigl
 Tina Wellman
 Kerrie Brinkman-White and
 Jody White
 Weston Wilkerson

Beau Williams
 Wiley and Janet Williams
 Nechelle Zoller

FRIEND (UP TO \$100)

Rebekah Ambrosini
 Michael Anderson
 Ashli Arbo
 Mark and Linda Ashton
 Denae Athay
 Rick Ayling
 Connie Bailey
 Margaret Baldwin
 John Balentine
 Sandy Balzer
 Becky Barney
 Paula Barrington
 Pam Barrymore
 Joella Bass
 Leslie Batchelor
 Malcolm Batchelor
 Jennifer Baughn-Fennell
 Charlie Baum-Sehon
 Teresa Beecham
 Mark Belcik
 LaDonna Bell
 Laurie Bennett
 Catherine Bierschenk
 Chelsea Billings
 Andrew Blakeman
 Barbara Bland
 Helen Blaney
 Dawn Varner Bogart
 Charles and Amanda Bogie
 Kylie Boss
 Merrilee Bost
 Megan Bottomly
 Lena Brown-Owens
 Taylor Boyd
 Denise Bragg
 Marcia Brejda
 Marlon Breaux
 Gary and Michelle Brooks
 Annette Brown
 Charlotte Brown
 Rick Brown
 Susan Bruce
 Heather Buckmaster
 Heather Buckmeister
 Kenneth Bullock
 Elizabeth and Richard Buschelman
 Rick Buschelman
 Kimberly Butler
 Jay and Suzie Buxton
 Ashton Byrum
 Rose Cabato
 Jenny Campbell
 Rachel Cannon
 Thomas Capucille
 Teresa Caraway
 Janice Carroll
 Donna Carter
 Patrick Case
 Lucky Caves
 Donna Cervantes
 Myrna Chaney
 Kelli Chapman



As a Catholic community of faith, Bishop McGuinness Catholic High School is dedicated to educating and developing the whole person, providing a moral, ethical and Christ-centered compass for life. The teachings of the church permeate the school's spiritual, academic and social life, forming a Person for Others.





September 15 - October 3

Myriad Botanical Gardens Water Stage

This Tony Award-winning play by American playwright Terrence McNally is presented as a fictional master class by larger-than-life opera singer Maria Callas near the end of her life, in the 1970s. Alternately dismayed and impressed by the students who parade before her, Callas retreats into recollections about the glories of her own life and career. Featuring excerpts from famous operas sung live by her students, Callas shares with us the rewards and sacrifices taken in the name of art.

JOIN LYRIC THEATRE THIS FALL!



PRESENTED BY DEVON ENERGY

November 17 - December 23

The Historic Harn Homestead

Oklahoma's favorite holiday tradition returns for its 11th year! In Charles Dickens' timeless tale, three magical ghosts whisk the miserly Ebenezer Scrooge away on an unforgettable adventure of transformation and redemption. A host of unforgettable characters spring to life in Lyric's spectacular production sparking the holiday spirit in audiences of all ages. You'll go from humbug to happy in one magical night under the stars. As featured in *The New York Times* and *BBC News*.

Charles Gray
Lora Chastain
Helen Chen
Suzette Cheng
Andre Chiang
Shauna Cilberg
Susan Clark
Emily Claude
Steve Clevenger
Nancy Coleman
Maria Collard
Karen Collier
Sheri Cordell
Steven Corley
Danny Crabb
LaTasha and Jeff Craig
Edwin D Crane
Leslie Crissup
Christy Cronin
Christy L. Cronin
Kendall and Smriti Lena Crouso
Marchelle Crow
Norman Crowe
Lee Curtis
Phylesia Dailey
Priscilla S Decker
Michele Dehart
Sharon Dikes
Louise Dilley
Steve and Susan Donchin
Susan Donchin
Jeff & Tonnie Dosser
Betty Doyle
Michael Duncan
Ben and Tori Duphone
Dena Edwards
Nicholle Edwards
Kristy Ehlers
Jessica Elliott
Danille Ezell
Dianna Farrar
Melissa Farrow
Keith Faulkner
Joshua Fawcett
Jeanne Fell
Ariana Ferch
Annette Fisher
Dr. Matthew W. Ford
Ann Forsyth
Jan Foutch
NaTasha Franklin
Margaret Franks
Ronald and Ginny Freeman
Jacob Friedman
Sheri Friedman
Amy Frost
Jerry Freeland
Jane Gibbons
Alysa Giles
Jacqueline K Gilley
Chris Glossup
Pat Goodfellow
Judith Goodno
James Goodwin
Kent Graham
Theresa Graif
Karen Gregory
Elizabeth Griswold

Mike and Valerie Hall
Emily Hamilton
Beth Hammack
Jason Hammond
Melissa Hancock
S Brandon Hancock
Megan Reed Hansen
Steven Hardebeck
Katherine Hargus
Katrina Harris
Vered and Benji Harris
Larry Hazelwood
Mark and Roxanne Helm
Luke Helms
Marlene Helsel
Jennifer Hemenway
Mark Hill
Tricia Hines
Jennifer Hinkle
Karl and Mary Hirsch
Steve Hoppe
Julie Hopper
Kenneth and Linda Howel
Vince and Dejuana Howie
Jan Hulsey
Casey Hultman
Barbara Hunt
Dick and Julia Hunt
Jo Ann Hunt
Austin Iba
Henry Iba
Marsha Ingersoll
Terese and Quinn Irwin
Patti James
Natalee Jamison
Amanda Janitz
Fatima Jeffrey
Jann Jeffrey
Rita Jencks
Justin Jennings
Maryann Johnson
Nicholas Johnson
O.W. and Darlene Johnson
William (Scott) Johnson
Suna Johnston
Jennifer Jones
Sydney Jones
Davon Kapka
Elizabeth Kastl
Peggy Keefe
Joyce and Don Keel
Kara Keenze
Melissa Kendrick
Paige Kincaid
Lois King
Susan King
Leah Kirkpatrick
Brooke Kivett
Jan Klopp
Mike Knedler
Nick and Ann Knutson
Michael Korenblit
Mark Kowalski
Mela Kunitz
Christine Kuriger
Doug Lamb
Kelly and Lisa Landon
Bobbie Langford

Hans Larsen
Anita Le
Nora Leal
Jenny Lee
Michael Leeper
Kim Leister
Britnee Lesser
LeAnn Lienhard
Bob and Nancy Lisle
Donna Lisle
Carol Loeffelholz
David Lopez
Jane Lorenz
Lu Ann Faulkner-Schneider
Monica Lytle
Randy Macon
Douglas Majors
Romeo Mandanas
Lee Marrs
Aaron Marshall
Henry Martin
Anton Maslovskii
Jan Massey
Elizabeth Maughan
Maury Morris
Selma Mays
Ashley McAllister
Lindsey McCabe
Ashley McCormick
Mark McCoy
Lance McDaniel
Robyn McGee
Shane and Anna MCGuire
Chris and Susan
Patrick Meyers
Bob Mitchell
Karen Miller
Misty Hsieh
Yonni Mobley
Charlie Monnot
Kelly Moore
Andrea and Daniel Morgan
Dana Morrow
Grant Mosshart
Tia Mount
Nancy Musselman
Carol Nichols
Nicole Gensman
Madison Noel
David Norton
Katerina Ntourou
Wayne Null
Victoria O'Kain
Jessica and Patrick Ockershauser
Kevin and Heidi Offel
Deborah Oliver
Ann Olson
Randy Olson
Charles Oppenheim
Ann Osburn
Tunde Osholake
Ronald Page
Susan Parker
Max Patterson
Deborah Payne
Jennifer Penland
Mary Pezant
Margaret M. Pickard

Darin Pingry
 Lourdes Planas
 Ivo Pletka
 Cassi Poor
 Harriett Porter
 Susan Potter
 Steve and Risa Powell
 James R. Price
 Chris Purget
 Bill and Sharon Pyeatt
 Gina Quinn
 Steve Raney
 Betty Raulie
 Robert Rawls
 Judy Reyes-Henderson
 Terrance and Barbara Rice
 Pamela Richman
 Tim and Teresa Ridinger
 Anita Risner
 Grant Roberts
 Linzie Roberts
 Mark and Susan Robertson
 Ashleigh Robinson
 Troy Robinson
 Billie Rodely
 Kelsey Rodgers
 Kelsey Rogers
 Cynthia Ross
 John Ross
 Karin Rowe
 Kyle Rudek
 Arthur and Janet Rus
 Anita Rydberg
 Julie and Scott Sampson
 Sharon Sanderson
 John Savage
 Mabel Scarborough
 Rebecca Schneider
 Michele Schlough
 Mary Schmitt
 Paul Schosser

Paula Scott
 Sue Scott
 Luci Seem
 Dean and Amy Sergeant
 Denise Sessions
 Tay Sha
 Julie Shrader
 Ruth and Terry Shyer
 Lucas Simkins
 Michele Simon
 Dyan Smith Household
 Jackie F. Smith
 Jovonne Smith
 Kathy Smith
 Vicki Smith
 Winona Smith
 Evelyn Sons
 Kristen Sorocco
 Denise Speed
 Glenda Stansbury
 Stephanie Stevens
 DVonte Stewart
 Jim and Sharon Strate
 Robyn Stump
 Karla P. Sutherland
 Denise Semands and Ron Suttles
 Ginnie Tack
 LeighAnn Taylor
 Elizabeth Tellers
 Carrol Thomas
 James Thomas
 Goldie Thompson
 Patricia Thompson
 Jessica Thompson
 Thomas Tilson
 Robyn Tower
 Stephanie Trougakos
 Jon C. and Katie Trudgeon
 James Turnini
 Ronda Unruh
 Jack vanEgmond

Pam Warren
 Luann S. Waters
 Debra Weaver
 Cheryl Weintrab
 Jessica Welp
 Autumn West
 Lisa West
 Ashley White
 Michael Whitmer
 Angela Williams
 Susan and Ralph Wilsack
 Anne Wimberly
 Rebecca Windle
 Linda and W. Paul Woody
 David Woolly
 Deanna Wright
 Eric Zemke
 Amazon Smile
 Network for Good

**Special thanks to the following
 organizations who match the
 gifts of their employees:**

AT&T
 Bank of America
 Boeing
 The Coca-Cola Company
 Dell
 E.L. and Thelma Gaylord Foundation
 Inasmuch Foundation
 Kimray

**LYRIC THEATRE
 BEACON CLUB MEMBERS**

Sharlene S. Branham
 Max A. Brattin
 Doug and Ginny Lawrence
 Marilyn Lesneski
 Paula and Carl Stover
 Don T. and Carolyn T. Zachritz


Special Thanks

R.K. Black
 Clements Foods - Ed Clements
 Diana Williams - Color Guard Coordinator
 Impressions Printing - Mike Stuart
 Kings Worldwide Transportation

Walnut Gardens
 Arts Council of Oklahoma City
 Cory's Audio Visual
 Toucan Productions
 Hugg & Hall Equipment Company

Canadian River Cruisers Classic Car Club
 Dave & Marilyn Saunders (Pearl)
 Charlie Lunsford (Marti)
 Terry & Beck O'Dea (Old Yeller)

Bishop McGuinness Catholic High School
 Principal David L. Morton
 Matt Avra, Brett Young & BMCHS
 Theatre Department



BAD GRANNY'S
Bazaar
DIANA HARRIS
 1759 N.W. 16TH
 OKLAHOMA CITY, OK 73106
 (PLAZA DISTRICT)
 TUES THRU SAT, 12 TO 7
 405-528-4585

BECOME A FACEBOOK FAN



- Corporate Gift Tins •
- 200+ Sno-Cone Flavors •
- Ice Shavers •
- Block Ice •
- Special Events •

Ludinia Lahodny : 405-760-7976
 Rick Lahodny : 405-760-6925
 Shop : 405-631-6818

5212 S. Shields Blvd. • OKC, OK • 73129

Gourmet Popcorn & Nuts • Frost-Bites Shaved Ice



KISMET ARTS
 STUDIO & THEATRE

ARTS EDUCATION IN OKLAHOMA CITY

Voice | Acting | Dance | Piano

KISMETARTSOKC.COM



2701 N. CLASSEN BLVD.
 OKC, OK 73106

405.524.7333

A TRADITIONALLY
 MODERN EXPERIENCE

WWW.GRANDHOUSEOKC.COM

LYRIC THEATRE'S 2022 SEASON COMING SOON!

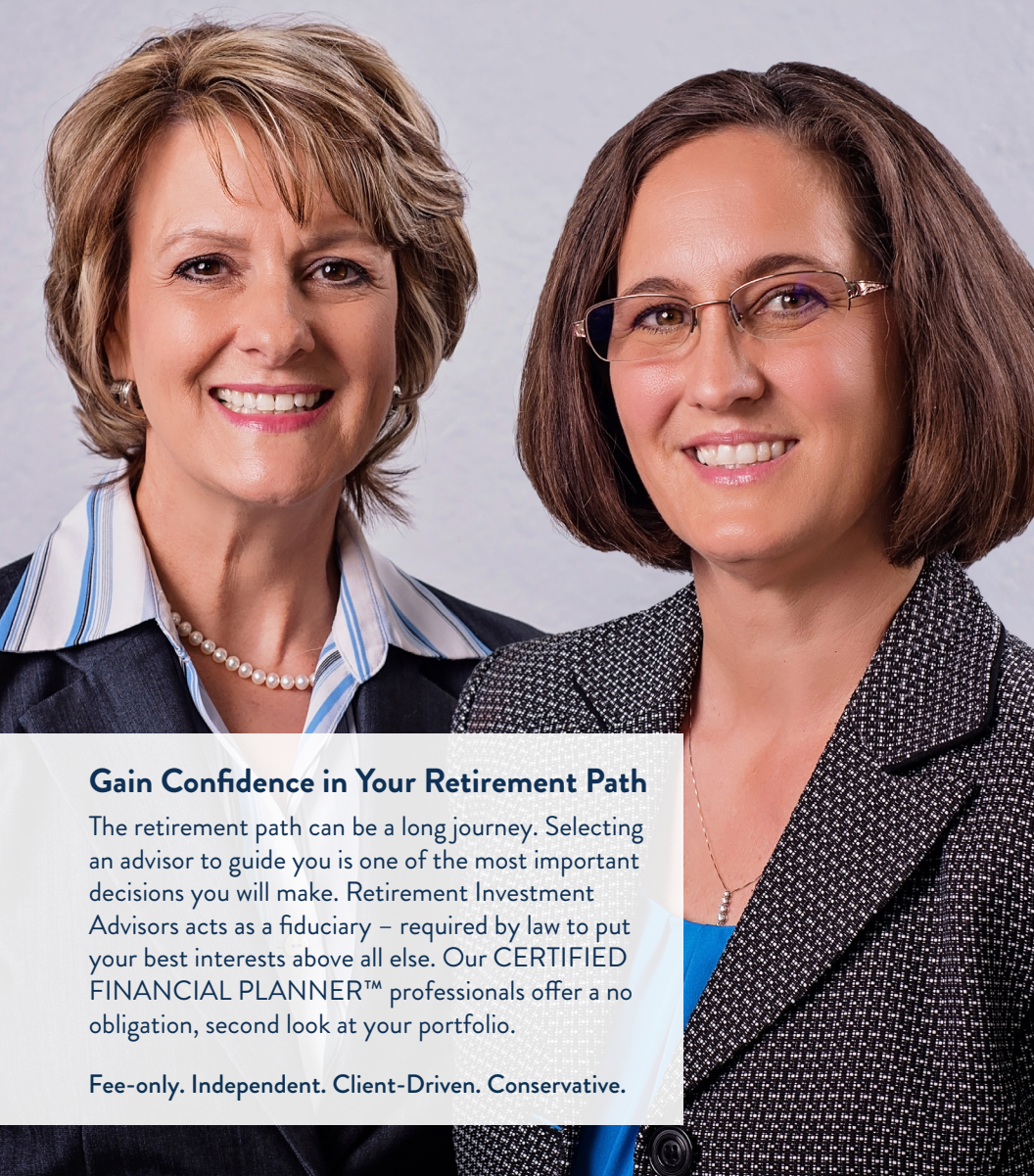
Follow us on social media and at www.LyricTheatreOKC.org for more information!

BELL & RHODES, PC



Certified Public Accountants
 14220 Barbour Avenue
 Oklahoma City, OK 73134
 405 341-2863

Proudly serving the Non-Profit Community in Oklahoma City since 1983



Gain Confidence in Your Retirement Path

The retirement path can be a long journey. Selecting an advisor to guide you is one of the most important decisions you will make. Retirement Investment Advisors acts as a fiduciary – required by law to put your best interests above all else. Our CERTIFIED FINANCIAL PLANNER™ professionals offer a no obligation, second look at your portfolio.

Fee-only. Independent. Client-Driven. Conservative.

Let us be your guide. Schedule a complimentary consultation today.

theretirementpath.com/lyric
405.842.3443



RETIREMENT
INVESTMENT ADVISORS, INC.

Oklahoma City | Edmond | Frisco

LET FFB TAKE CENTER STAGE FOR ALL YOUR FINANCES



Member FDIC



**First
Fidelity
Bank**

WE GO WHERE YOU GO.
FFB.COM