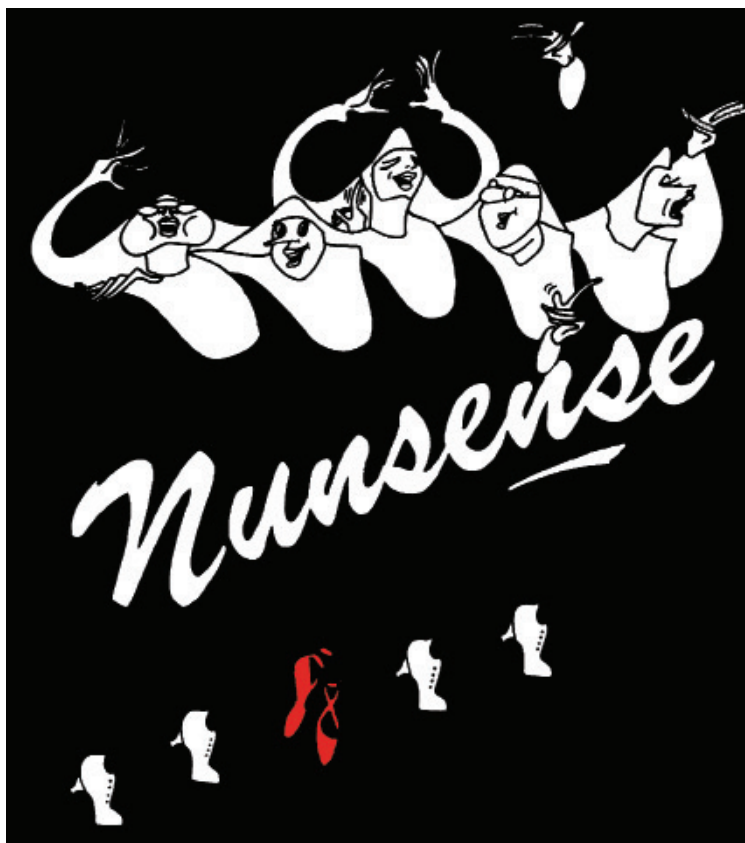




LYRIC THEATRE OF OKLAHOMA



APRIL 21 - MAY 9, 2021



ECHOLS & ASSOCIATES

OKLAHOMA'S TOP RATED MATRIMONIAL LAWYERS



Jonathan D. Echols, David W. Echols, Amy L. Howe and Kyle L. Endicott

Established in 1979, the law firm is primarily engaged in contested and complex family law litigation. The firm's four attorneys, with a combined experience of over 80 years in the practice of Family Law, have dedicated themselves to helping their clients find their future, while honoring their past, through compassionate, knowledgeable and experienced representation.

The firm has received numerous accolades, including recognition for many years by the Bar Register of Preeminent Lawyers rated by Martindale-Hubbell for legal ability and highest professional standards.

9925 South Pennsylvania Avenue
Oklahoma City, OK 73159

www.echolslawfirm.com
(405) 691-2648



WE ARE HONORED TO SUPPORT LYRIC THEATRE

In the last 38 years, Express Employment Professionals has put millions of people to work across North America, South Africa, and now Australia and New Zealand. With more than 830 franchise locations and an International Headquarters based right here in Oklahoma City, Express strives to provide hope through employment.

Producing Artistic Director's Welcome

Dear Friends,

Welcome back to live, professional theatre in Oklahoma and Lyric Theatre's 58th season and to our second show, *Nunsense!* Founded in 1963, Lyric has produced theatre, right here in Oklahoma, for over seven decades! And, while things might be a bit more challenging this year, we are committed to creating the most dynamic theatre for you and the people of our great state.

We learned a lot this past fall and winter producing theatre outdoors both here at Myriad Gardens and with our special production of Lyric's *A Christmas Carol* at the historic Harn Homestead. We learned not only how to produce and deliver theatre safely to you and your family. But, also how to create dynamic, new theatrical experiences that had audiences cheering for more. So, not to disappoint, we pivoted quickly and applied our newfound knowledge to creating an entire theatrical season in the beautiful outdoors all around our great city! In fact, Lyric is leading the outdoor performance movement this year along with theatres all over America – those who, just like Lyric, are waiting until that triumphant moment when we will return to the indoor venues we know and love! This season was chosen to highlight the energy of Oklahoma City with fun, classic shows and new ones that will surprise and delight. And, most importantly, highlight the bright future that lays ahead for Lyric Theatre, the arts and all of us!

For this performance, we have all gathered to join the Sisters of Hoboken, New Jersey, who share their unique and delightful sense of hope and determination with us through the power of prayer... and musical theatre! *Nunsense* is one of those rare shows that just brings a smile to your face due to the sheer sincerity of the material and love for the characters. In fact, *Nunsense* has become a world-wide sensation. It ran Off-Broadway in NYC for 3,672 performances, was developed into a TV series with Rue McClanahan, and spawned 6 sequels and 3 spin-offs – such as *Nunsense 2: The Second Coming*, *Sister Amnesia's Country Western Nunsense Jamboree*, *Nuncrackers: The Nunsense Christmas Musical*, *Meshuggah-Nuns!* and *Nunsensations: The Nunsense Vegas Revue!* It seems audiences can't get enough of these wonderful characters, and Lyric is proud to showcase them in the show that started it all. I want to give a special thank you to my creative partner in theatrical crime, and director of *Nunsense* Ashley Wells. Her leadership, inspiring spirit, and love of Lyric shines through her winning cast and creative team. She is a big reason Lyric has weathered this rough time.

Remember tickets are now on sale for all of our 2021 shows. You can buy them individually or subscribe and enjoy our 2021 productions at a substantial savings. Each and every unique production is a must see! From this June's spectacular production of *Grease* at Bishop McGuinness Catholic High School's FOOTBALL STADIUM to the Tony Award-winning play, *Master Class*, inspired by the greatest of opera divas Maria Callas and featuring live opera under the stars at Myriad Gardens. Then, ultimately in a full circle moment, we are back where our outdoor adventures began at the Harn Homestead for the nationally-acclaimed, immersive production of Lyric's *A Christmas Carol*.

We are here because of you and the support of the city during this challenging year. We are Oklahoma Strong, both onstage and off, throughout the year. I thank you for believing in Lyric and the importance of the arts – especially during these most unusual times. And now, enjoy the fresh air and the heavenly sisters of *Nunsense!*

Cheers,
Michael

A photograph of an older man with white hair and a young girl with blonde hair walking away from the camera on a dirt path. The man is wearing a light blue polo shirt and khaki shorts, and the girl is wearing a white tank top and a colorful, patterned skirt. They are holding hands. In the background, there is a pond surrounded by lush green trees and tall grasses under a clear blue sky.

Responsibly fueling a better world.

Continental Resources is proud to support Lyric Theatre and their mission to enrich the quality of life for the people of Oklahoma.



CLR.com



INSPIRING TOMORROW'S BUILDERS

Our next generation of problem solvers just need a little spark. That push, to explore their innate curiosity. So encourage our next generation's builders. Cultivating their ingenuity will help design our future and create a better way of life.

Encouraging ingenuity.

SCIENCE . TECHNOLOGY . ENGINEERING . MATH



EXPRESS EMPLOYMENT INTERNATIONAL

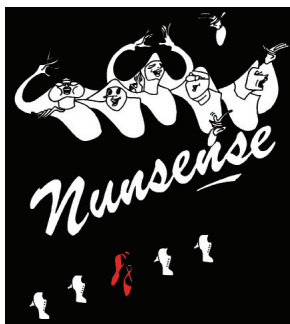


LYRIC THEATRE OF OKLAHOMA

MICHAEL BARON, PRODUCING ARTISTIC DIRECTOR

JIM REYNOLDS, MANAGING DIRECTOR

PRESENT



A MUSICAL COMEDY
BOOK, MUSIC AND LYRICS BY
DAN GOGGIN

SCENIC DESIGNER
KIMBERLY POWERS ^

COSTUME/PROPS DESIGNER
JEFFREY MEEK

LIGHTING DESIGNER
FABIAN J. GARCIA

TECHNICAL DIRECTOR
ADAM BRAND

SOUND DESIGNER
COREY RAY

MUSICAL DIRECTOR
BRIAN T. HAMILTON

CHOREOGRAPHY
MATTHEW SIPRESS

PRODUCTION
STAGE MANAGER
SYDNEY BRYAN


DIRECTED BY
ASHLEY WELLS +

+Member of Stage Directors and Choreographers Society (SDC)

^ Member of United Scenic Artists (USA)



NUNSENSE is presented by arrangement with Concord Theatricals. www.concordtheatricals.com
Musical tracks provided by ROCS



The arts bring
us together!

Allied Arts is proud to support more than 40 local nonprofit arts and cultural organizations annually, including Lyric Theatre. Together, we reach approximately one million people each year statewide with inspiring, educational and community-building programming.



DONATE TODAY.

alliedartsokc.com/donate

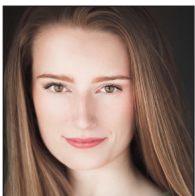
Cast



BRENDA WILLIAMS



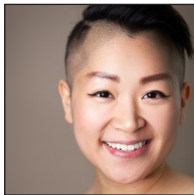
CHEYANNE MARIE



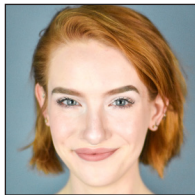
BROOKE MELTON



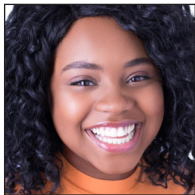
JENNY RADER



ASHLEY J. MANDANAS



JESSICA VANEK



VIVIANA A. GOODWIN

Brenda Williams	Sister Mary Regina (Mother Superior)
Cheyanne Marie	Sister Mary Hubert
Brooke Melton.....	Sister Robert Anne
Jenny Rader	Sister Mary Amnesia
Ashley J. Mandanas	Sister Mary Leo
Jessica Vanek	Understudy: Sister Robert Anne, Mary Leo, Mother Superior
Viviana A. Goodwin	Understudy: Mary Hubert, Mary Amnesia

Production Staff

Ashley Wells	Director
Matthew Sipress.....	Choreographer
Sydney Bryan	Stage Manager
Kristina Lenkowsky, Abbey Helfin	Assistant Stage Managers
Fabian J. Garcia.....	Lighting Designer
Kimberly Powers.....	Scenic Designer
Jeffrey Meek.....	Costume & Props Designer
Corey Ray.....	Sound Designer
Adam Brand.....	Technical Director
Kolt Schnake	Carpenter
Josie Walley, Devin Mulberry	Spot Operators
Alix Phelan.....	Wardrobe Supervisor
Christina Draper	Stitcher

Who's Who In The Cast

BRENDA WILLIAMS (*Sister Mary Regina*) – AT LYRIC: *Lyric's A Christmas Carol, Fiddler on the Roof, Billy Elliot, Mary Poppins, Hairspray, Always, Patsy Cline*. REGIONAL THEATRE: *Cyrano de Bergerac, Pinocchio, Heidi*, The Alley Theatre; FILM: *Public Enemies*, HBO Pictures; ADDITIONAL THEATRE: *Driving Miss Daisy, An Act of God, Disaster, The Musical, A Trip to Bountiful, The Full Monty, Search for Signs of Intelligent Life in the Universe*, Pollard Theatre; *Grapes of Wrath, Romeo & Juliet*, Oklahoma Shakespeare in the Park; *Cat on a Hot Tin Roof*, Reduxion Theatre; *Sordid Lives, Enchanted April*, Carpenter Square Theatre.

CHEYANNE MARIE (*Sister Mary Hubert*) – AT LYRIC: *Titanic*. REGIONAL: *Hunchback of Notre Dame*, Kismet Studio of Performing Arts; *Christmas Canteen*, Aurora Theatre. OTHER THEATRE: *A Funny Thing Happened On The Way To The Forum, Merrily We Roll Along, 9 to 5*, North Georgia Theatre; *Chicago, Sweet Charity*, Piedmont College; *Sideshow*, Oklahoma City University. OTHER CREDITS: M.M. Musical Theatre from Oklahoma City University, B.A. Musical Theatre from Piedmont College, Top 24 in the 2020 National Music Theatre Competition. www.cheyannemarie.com

BROOKE MELTON (*Sister Robert Anne*) – AT LYRIC: *The Rocky Horror Show*. REGIONAL THEATRE: *It's a Wonderful Life: A Live Radio Play*, Divergence Theatre Company; *Heathers: The Musical, Anything Goes*, The Royal Theatre. ADDITIONAL CREDITS: BM in Musical Theatre from Oklahoma City University and ongoing MM in Vocal Performance: Musical Theatre from NYU Steinhardt.

JENNY RADER (*Sister Mary Amnesia*) is making her Lyric Theatre debut. REGIONAL THEATRE: *Shrek the Musical, The Last Five*

Years, Poteet Theatre; OTHER THEATRE: *At the Movies, The City Cabaret OKC; Susannah, The Telephone, A Gilbert and Sullivan Soiree, The Bartered Bride, Simply Mozart*, University of Central Oklahoma Opera; *Into the Woods*, University of Central Oklahoma Music Theatre; *Happy Holidays*, University of Central Oklahoma Jazz Lab.

ASHLEY J. MANDANAS (*Sister Mary Leo*) – AT LYRIC: *Lyric's Moonlight Cabaret, The King and I, Ragtime, Lyric's A Christmas Carol*. REGIONAL THEATRE: *Avenue Q*, CityRep OKC; FILM: *Shifter, Golden Arm, The Girl Who Believes Miracles, Scutly, Chicken House* (pre-production). TELEVISION: *The Price of Fame: Angelina Jolie*. OTHER THEATRE: *Those Who Lie Beyond, Presence, 19th Century Hound. City of Angels, Nice Work of You Can Get It*, OU Theatre; *Songs for a New World*, National Arts Festival South Africa. ADDITIONAL CREDITS: Musical Theatre, B.F.A. from OU.

JESSICA VANEK (*u/s for Sister Robert Anne, Sister Mary Leo & Mother Superior*) is making her Lyric Theatre debut. REGIONAL THEATRE: *Some Enchanted Evening*, Upstage Theatre; *The Marvelous Wonderettes, Crimes of the Heart*, St. Croix Festival Theatre. EDUCATIONAL THEATRE: *Songs For A New World, A Little Night Music, The Zombies of Penzance*. ADDITIONAL CREDITS: B.M. in Music Theater from Oklahoma City University.

VIVIANA A. GOODWIN (*u/s for Sister Mary Hubert & Sister Mary Amnesia*) is making her Lyric Theatre debut. OTHER THEATRE: *Così fan tutte, A Little Night Music, Zombies of Penzance, Gianni Schicchi*, Oklahoma City University. ADDITIONAL CREDITS: Music Theatre/Vocal Performance B.M. from Oklahoma City University.



THE
ARTESIAN
 HOTEL • CASINO • SPA

Visit ArtesianHotel.com to plan your stay now!



What do the arts mean to Oklahoma?

- stronger economy
- enriched culture
- improved academics
- revitalized communities
- creative workforce

An agency of state government • arts.ok.gov



Artistic Staff

ASHLEY WELLS (Associate Artistic Director) celebrates 19 years with Lyric Theatre of Oklahoma. AT LYRIC: Disney's *Newsies* (Director), *Hello, Dolly!* (Director), *Junie B. Jones* (Director), *Rock of Ages* (Director), *The Wizard of Oz* (Director), *The Fantasticks* (Director/Choreographer), *Bernice Bobs Her Hair* (Choreographer), *Billy Elliot* (Director), *Pageant* (Director), Monty Python's *Spamalot* (Director), *Les Misérables* (Choreographer), *Triangle: A New Musical* (Associate Director), *The Odd Couple* (Director), *Big River* (Choreographer), *Tarzan* (Choreographer), *Some Enchanted Evening* (Director), *Sweet Charity* (Director) with Tony Award-winner Billy Porter, *Spring Awakening* (Choreographer), Lyric's *A Christmas Carol* (Choreographer), *Oliver!* (Choreographer), *The Rocky Horror Show* (Choreographer), *Urinetown: The Musical* (Co-choreographer), *Jesus Christ Superstar* (Choreographer), *Oklahoma!* (Co-Choreographer), *Hello, Dolly!* (Co-choreographer), *Cabaret* (Choreographer/Ensemble), *Chicago* (Choreographer/Merry Murderess). BROADWAY AND NATIONAL TOUR: *Hello, Dolly!* with Carol Channing. REGIONAL: *Phantom of the Opera*, North Shore Music Theatre; *Evita*, *Brigadoon*, *The Music Man*, Music Theatre of Wichita; *La Cage Aux Folles*, Casa Mañana.

MATTHEW SIPRESS (Choreographer) – AT LYRIC: Director/Choreographer of *Curious George: The Golden Meatball*, Choreographer of *Hello, Dolly!*, *Fun Home*, *The Wizard of Oz*, *Mary Poppins*, *Some Enchanted Evening*. NEW YORK: Assistant Choreographer of *Hello, Dolly!* starring Carol Channing (Broadway/30th Anniversary Nat'l Tour) and Asst. Director/Asst. Choreographer of *The Cocoanuts* (Off-Broadway). OKLAHOMA: Director/Choreographer of *Cabaret* (OK Gazette Best Musical of 2013) and *Sweeney Todd*, Reduxion Theatre Co.; *The Producers* (Red Dirt Report Best Direction of a Musical 2017) and *Disaster*, Pollard Theatre; *It's a Wonderful Life: A Live Radio Play*,

Miss Bennet: A Christmas at Pemberly, Oklahoma City University Theatre; *A Little Night Music*, *Così Fan Tutte*, OCU Wanda Bass School of Music; *Merrily We Roll Along*, UCO Musical Theatre; *A Funny Thing Happened on the Way to the Forum*, Jewel Box Theatre; *Hello, Dolly!*, Sooner Theatre.

BRIAN T. HAMILTON (Music Director) – 21 years with Lyric Theatre. LYRIC: *Singin' in the Rain*, *Bright Star*, *Rock of Ages*, *The Rocky Horror Show*, Lyric's *A Christmas Carol*, *The Fantasticks*, *Spring Awakening*, *A Little Night Music*, *Sweeney Todd*, *Cabaret*, *The Who's Tommy*. REGIONAL: *Nunsense A-Men!*, StrawHat Theatre. LOCAL: *The Normal Heart*, *You're a Good Man, Charlie Brown*, Oklahoma City Repertory Theatre.

FABIAN J. GARCIA (Resident Lighting Designer) – Three years with Lyric Theatre of Oklahoma. AT LYRIC: *Denise Lee: Pressure Makes Diamonds*, *Lyric Kids' Clubhouse*, *Lyric's Moonlight Cabaret*, *Lyric's A Christmas Carol*, *Having Our Say*, *The Cat in the Hat*, *The Rocky Horror Show*, *Frost/Nixon*, *Curious George: The Golden Meatball*. THELMA GAYLORD ACADEMY: *Mary Poppins*, *Marvel One Acts*, *Honk Jr.*, *Urinetown: The Musical*, *The Music Man*, *The Realm*, *Rokademy Experiment*, *Seussical Jr.*, *The 25th Annual Putnam County Spelling Bee*. LOCAL: *Megan Hilty Live!*, *E.T. The Extra-Terrestrial in Concert*, *The Sound of Simon and Garfunkel*, *The Hot Sardines*, *Revolution: The Beatles Symphonic Experience*, *Melinda Doolittle*, *The Magic of John Williams*, *A Classic Christmas*, *Ragtime & All That Jazz*, OKC Philharmonic; *She Loves Me*, Oklahoma State University.

KIMBERLY POWERS (Set Designer) is delighted to return to Lyric Theatre for *Nunsense* after designing *Denise Lee: Pressure Makes Diamonds*, Disney's *Newsies*, *Titanic: The Musical*, *Hello, Dolly!*, *Mamma Mia*, *West Side Story*, *Lyric's A Christmas Carol*, *Fiddler on the*

Roof, An Inspector Calls, and Billy Elliot. Regionally, she has designed scenery for TheatreSquared (AR), Virginia Repertory Theatre (VA), Charleston Stage (SC), Stages Rep (TX), Southern Rep (LA), Casa Mañana (TX), Lyric Theatre of Oklahoma (OK), and Northern Stage (VT). She was the Resident Set Designer for Ocean State Theatre Company's inaugural season and for Ohio Light Opera, as well as the first Design Assistant at The Denver Center Theatre Company. Kimberly has also been a freelance artist since 2000, and has also worked professionally as a muralist, props master, event designer and coordinator, graphic designer, and exhibit designer. Her work is available to view at kvpowersdesign.com and on Instagram @kvpowersdesign.

JEFFREY MEEK (*Resident Costume Designer*) 22nd season and over 100 productions with Lyric Theatre of Oklahoma. REGIONAL: Ohio Light Opera: Over 50 productions, including *Lady Kate* - World Premier, *Regrets Only* - World Premier, *The Arcadians* - U.S. Premier, *The Grande Duke* - U.S. Premier; Tulsa Opera: 2003/2004 Seasons; Casa Mañana Playhouse: *Annie*, Disney's *High School Musical*, *A Christmas Carol* - *The Musical*; Stage One: *I Do, I Do, Are We There Yet?* - World Premier, *Swing*; Eastman School of Music: 3 Seasons; Triad Theatre: *Kids in America*; Colossal Studios: *Family Pirate Adventure*; Adventure Theatre: *James and the Giant Peach* - Helen Hayes Nomination. LOCAL: OKC Philharmonic: 13 years of *A Very Merry Pops*; Reduxion Theatre: 7 Seasons, *Hair*, *Cabaret*, *Sweeney Todd*, *Romeo and Juliette*; Carpenter Square Theatre: *Importance of Being Earnest*, *Maritius*; Oklahoma Children's Theatre: *To Kill a Mockingbird*; Jewel Box Theatre: *Bus Stop*, *Leading Ladies*, *37 Postcards*, *Nunsense II* - *The Second Coming*, *Suite Surrender*, *South Pacific*. FILM: *Fingerprints*, *Pearl*, *Agenda*.

SYDNEY BRYAN (*Production Stage Manager*) – *Nunsense* is her first show with Lyric Theatre. REGIONAL THEATRE: *Nutcracker Short and Sweet* (SM), Music

Theatre Wichita 2018-2019 Seasons (Carpenter), *Nutcracker* Tours 2018-2019 (ASM), She is expected to graduate from Oklahoma City University in May with a BFA in Production Stage Management and Technical Direction.

COREY RAY (*Resident Sound Designer/ Audio Engineer*) has been with Lyric Theatre for 1 year. AT LYRIC: *Denise Lee: Pressure Makes Diamonds*, *Lyric Kids' Clubhouse Cabaret*, *Lyric's Moonlight Cabaret*, *Lyric's A Christmas Carol*. Corey graduated from ACM@UCO in 2014 with a BAT in Music Production and has worked as an audio engineer in the live concert industry for 13 years.

DAN GOGGIN (*Author*) is a writer and director who began his professional career singing in the Broadway production of *Luther*. While appearing in a comic folk-duo called "The Saxons," he began writing. This led to scores for the off-Broadway musical *Hark!* (in which he also appeared), the Broadway production of *Legend*, and two revues. Mr. Goggin received the 1986 Outer Critics' Circle Awards given to *Nunsense* for Best Musical, Best Book and Best Music. *Nunsense* and *Nunsense 2: The Second Coming* have been recorded for the A&E Television Network. *Nunsense 3: The Jamboree* toured the U.S. and has been recorded for television at the Grand Ole Opry. *Nunsense A-Men!* opened at the 47th Street Theatre in New York in June 1998. *Nuncrackers: The Nunsense Christmas Musical* premiered in October 1998, followed by a national tour. *The Nuncrackers* television special played on the PBS network and received an Emmy nomination for Best Musical Score. Mr. Goggin's *Meshuggah-Nuns: The Ecumenical Nunsense* premiered in September 2002. In 2004, Mr. Goggin's "serious piece," *The Traditional Latin Mass*, was recorded by cast members and friends. 2005 marked the premiere of *Nunsensations: The Nunsense Vegas Revue* *Sister Robert Anne's Cabaret Class* (a one-nun musical) and *Unset Boulevard: The Nunsense Hollywood Bowl Show* premiered in 2012.

A community without music, art and theatre is like a community with no soul.

Lyric Theatre of Oklahoma, thank you for enriching
Oklahomans' lives for more than 50 years.

We Listen. We Serve.



FRATES | IRWIN

RISK MANAGEMENT SOLUTIONS

▲ ACRISURE[®] AGENCY PARTNER

103 Dean A McGee Ave., Ste. 700, Oklahoma City, OK 73102
(405) 290-5777 • www.fratesinsurance.com

SHOW BIZ

DANCEWEAR BOUTIQUE



showbizdancewear.com

Trained pros to keep you
on your toes with the best
in bodywear and shoes

NORTH
4427 NW 63rd St.
(405) 840-4406

EDMOND
334 S. Santa Fe
(405) 341-7739

Lyric Leadership

MICHAEL BARON (*Producing Artistic Director*) At Lyric, he directed *Frost/ Nixon*, *Titanic*, *Singin' in the Rain*, *Bright Star*, *When We're Gone* (world premiere), Disney's *Freaky Friday*, *Fun Home*, Disney's *When You Wish*, *James and the Giant Peach*, *I Am My Own Wife*, *Assassins*, *Fiddler on the Roof*, *Dreamgirls*, *Mann... And Wife* (world premiere), *Bernice Bobs Her Hair* (world premiere), *Big Fish* with David Elder and Tony-nominee Emily Skinner, *Oklahoma!*, *An Inspector Calls*, *A Little Night Music* with Tony-nominee Dee Hoty, *Les Misérables*, *Triangle*, *Big River*, *Tarzan*, *The Glass Menagerie*, *The Mystery of Irma Vep*, *Call Me Madam* with Tony-winner Beth Leavel, *Spring Awakening*, *Ragtime*, *Oliver!*, *Boeing Boeing*, *Always... Patsy Cline*, *December Divas*, *The Rocky Horror Show* and the annual production of Lyric's *A Christmas Carol* (also adapted). He has directed over 95 productions at theaters across the country including the current production of *A Christmas Carol* at Ford's Theatre in Washington, D.C. Other regional directing highlights include - ZACH Theatre: *Peter and the Starcatcher*, *Spring Awakening*; Signature Theatre: *The Little Dog Laughed*, *Songs for a New World* starring Tony-winner Alice Ripley, Tony-nominee Brian D'Arcy James, Emmy-nominee Titus Burgess, and music direction by Jason Robert Brown; Adventure Theatre: *James and the Giant Peach*, the world premiere musical *Big Nate*; Goodspeed Musicals: *Meet John Doe*; Trinity Repertory Company: *The School for Scandal*. La Mama: *The Whore of Sheridan Square* (wrote and directed, published in anthology *Plays and Playwrights* 2006). NEA: 2010-2018 Poetry Out Loud National Competition Finals with hosts, John Leguizamo, Kerry Washington and Anna Deavere Smith. Teaching: American University, Brown University, Holy Cross College and Rhode

Island College. Michael has been a theatre grant panelist for the National Endowment for the Arts and the National Alliance for Musical Theatre. Training: B.A. in Theatre Arts, Wake Forest University; MFA in Directing, Trinity Repertory Conservatory. Michael served as the Associate Director of Signature Theatre in Arlington, Virginia-winner of the 2009 Regional Theatre Tony Award. Michael received the 2012 Helen Hayes Award for Outstanding Direction of a Resident Musical in Washington, D.C. for Adventure Theatre's production of *A Year with Frog and Toad*, the 2016 Oklahoma Governor's Arts Award, and a special award from Oklahoma City Mayor's Committee on Disabilities Concerns. He is a board member for the National Alliance for Musical Theatre.

JIM REYNOLDS (*Managing Director*) joined Lyric Theatre as Managing Director in 2017. He has an extensive background in arts management, marketing, public relations, project management, strategic planning and customer service. He comes to Lyric from Austin, Texas, where he was ZACH Theatre's marketing and public relations director for 25 years. It was a time of unprecedented growth for ZACH, which is now firmly positioned as one of Texas's leading professional theatres. During his tenure, Jim was an integral part of ZACH's success, responsible for all aspects of marketing, branding, press relations and ticket sales. Jim's tenure there helped the theatre grow from an annual operating budget of \$550,000 to \$8,000,000. He created and executed ZACH's annual subscription and single ticket campaigns, which remain the highest grossing in the organization's history. Prior to that, he was the sales director at Dallas Theater Center, Dallas, Texas, and production business manager at the Alliance Theatre Company, Atlanta, Georgia.

Lyric Theatre Board of Directors

Executive Committee

Sarah Fisher	President
Monica Wittrock	President-Elect
Brad Ferguson	Immediate Past President
Sarah Moore	Secretary
Carrie Leonard	Vice President of Development
Mollie Bennett McCurdy	Vice President of Education
Richard Riggs	Vice President of Facilities
Meredith Wolfe	Vice President of Finance
Eric Friedman, M.D.	Vice President of Governance
Kurt Carter	Vice President of Marketing
Ellen Fleming	Member-at-Large
David Flesher, M.D.	Member-at-Large
Jim Grant	Member-at-Large

Board of Directors

Carol Ringrose Alexander	Sharlene S. Branham	Ed Clements
David H. Dobson	Brenda Hernandez	Janet Hudson
Lou C. Kerr	Jerry Kuhn	Randy Lewis
Robert S. McKown	Scott McLaws	Lori Mathena
Judy Reyes-Henderson	Gary Rosenhamer	Lesley St. John
Carl Shortt	Dr. Pooja Singhal, M.D.	Ellen Spiropoulos
Mary Deane Streich	Mary Ann Tomlinson	Jon Trudgeon

Emeritus

Angela Ables	Patricia Austin	Gail K. Beals	Gayle Freeman Cook
Linda Garrett	Dee Hessel	Win Holbrook	Richard Horton
Barbara Jett	Ginny Lawrence	Robin Lister	Keith Long
Paula Stover	Mike Turpen	John Winblad	Don T. Zachritz

Ex-Officio

John Bedford, Dean OCU

Lyric Staff

Michael Baron	Producing Artistic Director
Jim Reynolds	Managing Director
Ashley Wells	Associate Artistic Director
Kerrie Brinkman-White	Director of Development
Michael Bratcher-Magallanez	Director of Marketing & Public Relations
Rozz Grigsby	Director of Education
Jeffrey Meek	Resident Costume Designer
Leia J. VanLue	Finance Manager
Mark Walker	Box Office Manager
Matthew Sipress	Company Manager/Production Manager
Adam Brand	Technical Director
Fabian J. Garcia	Resident Lighting Designer/Master Electrician
Corey Ray	Audio Engineer
Matthew Alvin Brown	House Manager
Glen Toney	IT Consultant

Lyric Theatre Sponsors



the
**Chickasaw
Nation**

SEASON
SPONSOR


devon

ARTS OUTREACH TITLE SPONSOR &
LYRIC'S A CHRISTMAS CAROL



THE GREAT AMERICAN
MUSICAL SPONSOR



LYRIC'S FAMILY FAVORITE
MUSICAL SPONSOR



THE OKLAHOMAN

PRESENTING
SPONSOR

FOUNDATION & MAJOR SEASON SUPPORT

AD ASTRA FOUNDATION



KIRKPATRICK FOUNDATION, INC.



E.L. and Thelma Gaylord
FOUNDATION



THE
SHUBERT
FOUNDATION INC.



IN-KIND & OTHER SEASON SUPPORT

LARSEN MUSIC COMPANY
WALNUT GARDENS



CHESAPEAKE
ENERGY



MEDIA SPONSORS



okc**FRIDAY**



NUNSENSE SPONSORS



KEVIN & MONICA
WITTROCK

EDUCATION & ARTS OUTREACH SUPPORT

Allied Arts Educational Outreach Program | Globe Life And Accident Insurance Company
Sonic, America's Drive-In | Carolyn Watson Rural Oklahoma Community Foundation
Wilshire Charitable Foundation | Paycom | The McGee Foundation

Special Thanks

Katie Brickman & the Myriad Gardens Ambassador Team

Brett Young - The Boom

Carson Decker - Moore High School

Mike Stuart - Impressions Printing

Kings Worldwide Transportation

Walnut Gardens

Arts Council of Oklahoma City

BELL & RHODES, PC



Certified Public Accountants
14220 Barbour Avenue
Oklahoma City, OK 73134
405 341-2863

Proudly serving the Non-Profit Community in Oklahoma City since 1983

Lyric Donors

Lyric extends its appreciation to all of our generous donors. This list reflects contributions made as of March 16 to Lyric's 2021 Annual Fund from individuals, couples, corporations and family foundations in support of our programs and activities. **To join Lyric's family of supporters, please contact Kerrie Brinkman-White, Development Director, at (405) 524-9310 or email Kerrie@LyricTheatreOKC.org for more information.**

DIRECTOR (\$2,500+)

Ole and Anne Andreassen
Gail K. Beals
John and Margaret Biggs
Jill Brown
Pramod K. Chetty, M. D.
Reggie B. Cook
Ronna and Lawrence Davis
John and Sandra Fanelli
Ellen and Tim Fleming
Nedra R. Funk
Janet and Kenneth Goodin
Terry and Darlene Haynes
Rose Henrichs and Robert (Bob) Rescinito
John and Janet Hudson
Barbara and Mason Jett
Cathy and Frank Keating
John and Robin Klaser
Keith and Debbie Long
Nancy and George Records
Lance and Cindy Ruffel
Carl and Beth Shortt
Gregory Smith
Paula and Carl Stover
Mary Deane Streich
Troy and Jennifer VanBrunt
Monica and Kevin Wittrock
Don T. and Carolyn T. Zachritz
Lori and Chris Zuest

CHOREOGRAPHER (\$1,500-\$2,499)

J. Angela Ables
Patricia C. Austin
Jack and Ruth Beller, M.D.
Glenn and Debra Blumstein
Fred W. (Pete) Brown
Phil and Cathy Busey
Kent Campbell
J Christopher and Ruth Carey
Kurt and Jenny Carter
Edward and Matilda Clements
Cindy and Lewis Coate
David W. Echols
Joel Dixon
Brad and Celine Ferguson
Bryan Fischer
David and Dolly Flesher
Bob and Marca Floyd
Dee Hessel
Thomas and Rebecca Hill
Richard R. Horton
Peggy Kates
John and Jane Kenney
Barbara Krei
Doug and Ginny Lawrence
Robin J. Lister
Steve Mason

Travis Mason
Patricia and Harold Mathena
Sam and Mollie McCurdy
Charles and Jeanne Morgan, M.D.
Phyllis and Dale Regier
George and Teresa Rhome
Gary and Beverly Rosenhamer
Lil and William J. (Bill) Ross
Phyllis Sandmann
Jeanne Hoffman Smith
The Bankers Bank
Billie Thrash
Vahla and Tom Todd
Scott and Mary Ann Tomlinson
Jon Trudgeon
Bob and Carolyn Windsor
Carol Wright

VIP CLUB (\$1,000-\$1,499)

Carol and Kerry Alexander
Michael Clark
Ray Cloer
Randy and Melinda Compton
Robert Corley
Gayle Freeman Cook and Judge Tom R. Cornish
Carolyn and Michael Crawford, M.D.
Daniel and Jeannie Stith
David and Jean McLaughlin
Jackie Davis
Tony and Pam Dela Vega
Don and Peggy Manning
Carlos and Mary Elwell
Kenneth Fletcher
Dr. and Mrs. Bennett E. Fuller
Linda Garrett
Tom and Sandy Goldsworthy
Vicki Gourley
Mateja and Stephanie Govich
Mike and Gail Grady
Miranda and Jim Grant
Barry Johnson
Michael Knam
Dr. Joseph and Susan Kopta
Jake and Barbara Langthorn
Ann Larson
Lisa and Ray Lees
Carrie and Ryan Leonard
Lori and David Mathena
Doris and Robert S. McKown
Scott and Michelle McLaws
Mari Medley
Richard Mitchell
Larry and Wanda Myers
Guy and Caroline Patton
Paul and Kelly Pearson
H.E. (Gene) Rainbolt
Kathryn Reilly, M.D.

Paula and Gene Reynolds
Judy and Richard Riggs
Gary and Beverly Rosenhamer
Michael and Linda Sartin
Claude and Karen Seaman
Richard L. (Dick) Sias
Grant and Amanda Soderberg
Ella Speakes
Theresa A. Todd and Dr. Virgil Todd
Stephanie and Glen Toney
Sherry and Lonny Towell
Jill Walker
John and Lou Waller
Daniel and Mary Ward
Lisa Wasemiller-Smith, M.D.
Dr. Roland and Kelsey Walters
Lee and Melauna Wescott
Lisa and Mike Wilkinson
Geoff and Lisa Willis
Janell and Randy Young

LEADING ROLE (\$750-\$999)

Paul and Leigh Ann Albers
Jerry and Abby Bass
William Clark and Linda Cavanaugh
CEC Corporation
Rochelle and Delbert Converse
Teresa L. Cooper
Teresa Rose Crook
Jim and Patricia Dennis
Kathryn and William Dooley
Drew and Linda Edmondson
Gladys and Buck Feng
Kent W. Gardner
Anthony Gasaway
David and Alice Giles
Jack E. Golsen
Vic and Wallie Graybill
Shellie and Don Greiner
Shellie and Don Greiner
Melissa Griffith
Judy Hatfield
William Henson
Win and Anne Holbrook
Charles Johnson
Diana and Danny Kennedy
Michael L. Kerran
Nikki and JJ Kuhn
Paula Love
Betty Bellis Mankin
Jan and Brad Marion
Johnny C. Mccuddy
Brenda and Tom McDaniel
Brian and Charlotte Mitchell
Tami Murphy-Moore and Tripp Moore
Darla Morley

94.7
THE BREW
ROCKS

newsradio
1000
KTOK



98.5
El Patrón

KJ103

96.1 KXY



iHeartRADIO

Edward Oliver
 Jan and Greg Peery
 Tim Pollock
 Leigh Roberts
 Patrick Rooney
 Jeff and Debra Rowley
 Michele and Douglas Samuels
 Elliott R. Schwartz, DO
 Jay Smith
 Scott and Lesley St. John
 Dr. Jeff Anderson and Erick Stokes
 Colby and Martha Stone
 Steve and NeAnn Trice
 Dwayne Webb
 Ron Walters Construction
 Services, Inc.

CIRCLE OF STARS (\$500-\$749)

Carol and Mark Aldridge
 Frank Wise and Anita Armstrong
 Jane and Paul D. Austin
 Jay St. John & Sandra K. Ayres
 Arden Barrett
 Sherry K. Barton
 Dr. and Mrs. William L. Beasley
 Mary Bingaman
 A.J. and Janice Bisson
 David and Sherri Boyd
 Greg and Barbara Cable
 Mary Lou Casper
 Michael P. Cassidy
 Dr. Susan Chambers
 Earl and Louise Cheek
 Kristin Cheng
 Brittany and Michael Chumo
 Carolyn R. Coffey
 Betty Ann Cole
 Thomas Cotrone
 Joe H. Crosby
 Betty K. Crow
 Donna and Andrew Cummins
 Ann Deal
 Annette Devore
 David H. and Rurie E. Dobson
 Donna McGinty
 Gail Donnellan
 Kathey A. Duncan
 Echo Energy, LLC
 Glenda Eisenhour
 Kay F. Emery
 Gregory Eppard
 Dr. J. Patrick and Carole Jo Evans
 Sarah and Judd Fisher
 P. Kay Floyd
 Frank Bruno and Gina Bruno-Dunn
 Kathy and Jim Frankenfield
 Gayle Freeman Cook and
 Judge Tom R. Cornish
 George and Joanne Orr
 Debby and Jimmy Goodman
 Arron Grantz
 Bill Grayson
 Sharon and Barre Griffith
 Lynn and Scott Guillian
 Faye E. Hall
 Sammie and Lauranne Harris
 Marilyn and David Henderson
 Warren W. Henson, Jr.

Brenda and Jorge Hernández
 JC and Sandra Herriage
 Richard Hicks
 Jane and Rick Hill
 Richard and Cindy Homsey
 Mike Hoover
 Christina and Don Horvat
 Jamarson LLC
 James H. Norick Family
 Walter and Christy Johnson
 Jackie and Mike Jones
 Kaye H. and Thomas J. Jones
 Russell Kim
 Kimray, Inc.
 Don and Cathy Kirk
 Terry and Amanda Kordeliski
 Gregory Landegger
 Patricia and Bill Lindley
 Gwin Faulconer-Lippert and
 Rick Lippert
 Lou C. Kerr
 Shannon and Michael Love
 Rob and Karen Luke
 Lynna and Heather Geis
 Patti and Dick Marshall
 Gary L. Massad
 Dan and Dianna Masters
 Robert O. McDonald
 Marilyn and Bud Meade
 Meredith Wolfe
 Callie Merritt
 Dr. Allan and Ellen Metz
 Sarah and Mitchell Moore
 Kimberly and Steven Myers
 Debbie Nauser
 David and Natasha Neumann
 Mark and Lynn Neumeister
 The Honorable and Mrs. Ronald
 J. Norick
 Vickie Norick
 Oklahoma Allergy & Asthma Clinic
 Paul D. Austin Family Foundation
 Ric and Jennie Penner
 Barbara and James Peters
 Lewis and Linda Pontikos
 Mark and Janet Price
 Mary and Bill Price
 Public Strategies
 Jack Ransom
 Jim and Cindi Rapp
 Chris and Emily Remmert
 Nancy Rivers
 Dr. and Mrs. Michael Fred
 Robinson
 Richard and Linna Robinson
 Barry Roseman
 James E. Rushing
 Carol and Gary Sander
 Phil and Avis Scaramucci
 Stephen and Mary Ann Schmitt
 A. Lee and Janice Segell
 Gayle and Jim Shane
 Ricki V. Sonders
 Andrew and Ellen Spiropoulos
 Lisa A. Springer
 John and Rose Steele
 J. Christopher Sturm
 Dwight Sublett

Richard and Glenna Tanenbaum
 Beulah and Orville Tate
 Alison Taylor
 Carolyn J. Taylor
 John and Louise Thompson
 Rachel Thompson
 Dr. and Mrs. John Tompkins
 Jackie and Dennis Trepagnier
 Evan and Beth Vincent
 Donna Vogel
 Darlene Wallace
 Linda and Dick Wegener
 Elaine Weise
 Beth and Ed Wells
 Ted and Gail Wernick
 Larry L. and Leah A.
 Westmoreland
 Robert W. White
 Sarah Wienecke
 John Michael Williams
 Larry & Paula Willis
 William Swigert and Shane Wilson
 Anne W. Workman
 William and Lissa Wright

SUPPORTING ROLE (\$250-\$499)

Gina and Blake Bryan
 Judith Besett
 Pam Blevins
 Janet and Edward Bucknell
 Keri Buntyn
 Jean Cantrell
 Doug and Carolyn Chancellor
 Sandra Clapp
 Ann Deal
 Roy K. Dobbins
 Linda Ewerth
 Adele Fergus-O'Brien
 Shannon and Eric Friedman, M.D.
 Patrick Hayes
 Kim McCulley
 Nancy Kruckeberg
 Mark and Susan Ledbetter
 June C. May, M.D.
 Joe Murray
 Gary Rafferty
 Brenda Rawlings
 Mike and Carol Rhodes
 Nancy Rivers
 Rotary Club of Oklahoma City
 Anastasia Shirley
 Ben and Anny Stapp
 Martha and Colby Stone
 Alice Story
 Douglas and Susan Stussi
 Tom A. Thomas, Jr. Fund
 Susan and Mike Turpen
 Tonia West
 Karen Youmans
 Dean John Bedford and
 Ms. Jo Rowan

CHORUS (\$100-\$249)

Robert Adams
 David C. Andres
 Gale Ayres
 Janet Basler
 Joanie Batty

THE VIDEOTAPING OR
MAKING OF ELECTRONIC
OR OTHER AUDIO AND/
OR VISUAL RECORDINGS
OF THIS PRODUCTION AND
DISTRIBUTING RECORDINGS
OR STREAMS IN ANY MEDIUM,
INCLUDING THE INTERNET,
IS STRICTLY PROHIBITED, A
VIOLATION OF THE AUTHOR'S
RIGHTS AND ACTIONABLE
UNDER UNITED STATES
COPYRIGHT LAW. FOR MORE
INFORMATION, PLEASE VISIT:
[HTTPS://CONCORDTHEATRICALS.COM/
RESOURCES/PROTECTING-ARTISTS](https://CONCORDTHEATRICALS.COM/RESOURCES/PROTECTING-ARTISTS)



CEC® proudly supports Lyric Theatre and the Oklahoma City arts. As an engineering firm that is invested in our city's culture and creativity, we are excited for the future and thrilled to be a part.

GET STUFF BUILT RIGHT®

Oklahoma City | Tulsa | Duncan | North Dallas

CONNECTCEC.COM    



Mexican
RADIO
TACOS + COLD DRINKS

**YOUR NEW SPOT IN THE PLAZA
DISTRICT FOR TACOS
AND COLD DRINKS**

1734 NW 16TH STREET, OKC, OK | 405.900.5608 | MEXICANRADIOOKC.COM

Dianne Bauman
 Deanna Beatty
 Reverend Stephen Bird
 Pamela Blevins
 Lindsey Bluethman
 Donna B. Bowers
 Ken Bullock
 Cheryl Carpenter
 Patrick Case
 Mary Clark
 Lois Clausing
 Mark and Rebecca Clinton
 Jerry and Karen Conner
 Sally Cortez
 Brandi Coyner
 Lyn Cramer
 Mary and Bill Crynes
 Rick and Jessica Cunningham
 Rita D'Andrea
 Elaine and Tim DeGiusti
 Barbara Demaio
 Aaron Diehl
 Susan D. and Alton L. Dobbins
 Penny Egger
 Marcia R. Enos
 Gladys and Buck Feng
 Durwin Gaither
 Barbara Gallivan
 Jeana Gedmin
 Robert and Carolyn Graham
 Elizabeth Gray
 Drs. Richard and
 Marlene Greyson
 Judy Gunter
 Lynnice Hamlin
 Susan L. Hay
 David and Jana
 Cynthia B. Heymans
 Jeanne Anne Hubbard
 Quaye F Hudson
 Petra Hutchison
 Dr. Karen & Larry Jennings
 Bonnie Kennedy
 Kerri Kirchhoff
 Rick and Ludinia Lahodny
 Gene Lamb
 Robert and Mary Leveridge
 Kay B. Lewis
 Robert Link
 James Long
 Henry Martin
 Ray Mewhorter
 Veronica Milam
 Eugene Mitchell
 Renee Mixon
 Julie Montgomery
 Morning Star for Spiritual Living
 Jonathon Morris
 Judy and Wes Morrison
 Pam and Mike Mowry
 David and Suzanne Neff
 Sean and Anne Nelson
 Anne Zachritz and Jane Ann Norris
 Hannah Nowlin
 Dr. and Mrs. W. H. Oehlert
 Keith Stelting and Carole Owen
 Celia Pate
 Susan Rackley

Erica Rixen
 Kasey Rohde
 Anna-Faye Rose
 Claudia San Pedro
 Gayle Scheirman
 Cindy Schultz
 Ben and Shirley Shanker
 Robert Simma
 Kimberly Simms
 Donna and Randy Smith
 Dori Smith
 Melissa Smith-Johnson
 Kathryn Stone
 Mary Strasner
 Collin Stroud
 Mike Stuart
 Lisa Synar
 Beulah and Orville Tate
 Judson and Jessica Tompkins
 Marc Utley
 Ronald and Jane Walker
 George and Nancy L. Wallace
 Mark Warner
 Betty K. Brown
 Barbara Inez Craig Weigl
 Kerrie Brinkman-White and
 Jody White
 Ryan & Tessa Wicks
 Weston Wilkerson
 Beau Williams
 Wiley and Janet Williams
 Nechelle Zoller

FRIEND (UP TO \$100)

Rebekan Ambrosini
 Michael Anderson
 Ashli Arbo
 Mark and Linda Ashton
 Denae Athay
 Margaret Baldwin
 John Balentine
 Sandy Balzer
 Becky Barney
 Paula Barrington
 Pam Barrymore
 Joella Bass
 Leslie Batchelor
 Jennifer Baughn-Fennell
 Mark Belcik
 LaDonna Bell
 Laurie Bennett
 Catherine Bierschenk
 Chelsea Billings
 Helen Blaney
 Dawn Varner Bogart
 Charles and Amanda Bogie
 Kylie Boss
 Merrilee Bost
 Megan Bottomly
 Taylor Boyd
 Denise Bragg
 Gary and Michelle Brooks
 Annette Brown
 Charlotte Brown
 Rick Brown
 Susan Bruce
 Kenneth Bullock
 Elizabeth and Richard Buschelman

Rick Buschelman
 Jay and Suzie Buxton
 Ashton Bynum
 Ashton Byrum
 Rose Cabato
 Rachel Cannon
 Teresa Caraway
 Janice Carroll
 Donna Carter
 Patrick Case
 Lucky Caves
 Donna Cervantes
 Myrna Chaney
 Kelli Chapman
 Charles Gray
 Helen Chen
 Andre Chiang
 Shauna Cilberg
 Steve Clevenger
 Nancy Coleman
 Maria Collard
 Karen Collier
 Sheri Cordell
 Steven Corley
 LaTasha and Jeff Craig
 Edwin D Crane
 Leslie Crissup
 Christy L. Cronin
 Kendall and Smriti Lena Crouso
 Norman Crowe
 Lee Curtis
 Phylesia Dailey
 Priscilla S Decker
 Michele Dehart
 Louise Dille
 Steve and Susan Donchin
 Susan Donchin
 Jeff & Tonnie Dosser
 Michael Duncan
 Ben and Tori Duphone
 Dena Edwards
 Nicholle Edwards
 Kristy Ehlers
 Jessica Elliott
 Dianna Farrar
 Joshua Fawcett
 Ariana Ferch
 Annette Fisher
 Dr. Matthew W. Ford
 Jan Foutch
 NaTasha Franklin
 Margaret Franks
 Ronald and Ginny Freeman
 Jacob Friedman
 Amy Frost
 Jerry Freeland
 Jane Gibbons
 Jacqueline K Gilley
 Chris Glossup
 Judith Goodno
 Kent Graham
 Theresa Graif
 Karen Gregory
 Elizabeth Griswold
 Beth Hammack
 Melissa Hancock
 S Brandon Hancock
 Megan Reed Hansen

2020/21 SEASON



CANTERBURY
VOICES

TICKETS NOW ON SALE!

OF PERPETUAL SOLACE

featuring the Oklahoma City Philharmonic



ATTEND THE LIVE EVENT
Sunday, May 16 - 3 PM
Civic Center Music Hall

WATCH FROM HOME
May 23 - June 20
Virtual Venue Online

A WORLD PREMIERE CONCERT EVENT!

CONCERT SPONSOR



SEASON SPONSORS



Ad Astra
Foundation



Wanda L. Bass
Foundation



CanterburyOKC.com 405.232.7464 | OKCCivicCenter.com 405.594.8300

Steven Hardebeck
 Katrina Harris
 Vered and Benji Harris
 Larry Hazelwood
 Mark and Roxanne Helm
 Luke Helms
 Marlene Helsel
 Jennifer Hemenway
 Mark Hill
 Tricia Hines
 Jennifer Hinkle
 Steve Hoppe
 Julie Hopper
 Kenneth and Linda Howel
 Casey Hultman
 Jo Ann Hunt
 Austin Iba
 Henry Iba
 Marsha Ingersoll
 Terese and Quinn Irwin
 Natalee Jamison
 Jann Jeffrey
 Rita Jencks
 Justin Jennings
 Maryann Johnson
 Nicholas Johnson
 O.W. and Darlene Johnson
 William (Scott) Johnson
 Jennifer Jones
 Sydney Jones
 Davon Kapka
 Elizabeth Kastl
 Peggy Keefe
 Joyce and Don Keel
 Paige Kincaid
 Lois King
 Leah Kirkpatrick
 Brooke Kivett
 Jan Klopp
 Mike Knedler
 Nick and Ann Knutson
 Mark Kowalski
 Mela Kunitz
 Doug Lamb
 Bobbie Langford
 Hans Larsen
 Nora Leal
 Jenny Lee
 Michael Leeper
 Kim Leister
 Britnee Lesser
 Bob and Nancy Lisle
 Donna Lisle
 Carol Loeffelholz
 David Lopez
 Lu Ann Faulkner-Schneider
 Monica Lytle
 Lee Marrs
 Aaron Marshall
 Henry Martin
 Anton Maslovskii
 Jan Massey
 Elizabeth Maughan
 Selma Mays
 Ashley McAllister
 Lindsey McCabe
 Ashley McCormick
 Mark McCoy

Lance McDaniel
 Robyn McGee
 Bob Mitchell
 Karen Miller
 Yonni Mobley
 Charlie Monnot
 Kelly Moore
 Andrea and Daniel Morgan
 Dana Morrow
 Grant Mosshart
 Tia Mount
 Nancy Musselman
 Carol Nichols
 Nicole Gensman
 Madison Noel
 Katerina Ntourou
 Jessica and Patrick Ockershauser
 Ann Olson
 Randy Olson
 Max Patterson
 Deborah Payne
 Jennifer Penland
 Mary Pezant
 Margaret M. Pickard
 Darin Pingry
 Ivo Pletka
 Cassi Poor
 Harriett Porter
 Susan Potter
 James R. Price
 Chris Purget
 Bill and Sharon Pyeatt
 Betty Raulie
 Judy Reyes-Henderson
 Pamela Richman
 Tim and Teresa Ridinger
 Grant Roberts
 Linzie Roberts
 Mark and Susan Robertson
 Billie Rodely
 John Ross
 Karin Rowe
 Kyle Rudek
 Arthur and Janet Rus
 Anita Rydberg
 Julie and Scott Sampson
 Mary Schmitt
 Paul Schosser
 Paula Scott
 Luci Seem
 Dean and Amy Sergeant
 Tay Sha
 Ruth and Terry Shyer
 Michele Simon
 Dyan Smith Household
 Jackie F. Smith
 Jovonne Smith
 Kathy Smith
 Vicki Smith
 Winona Smith
 Evelyn Sons
 Kristen Sorocco
 Denise Speed
 Glenda Stansbury
 Stephanie Stevens
 Jim and Sharon Strate
 Robyn Stump
 Denise Semands and Ron Suttles

Ginnie Tack
 Elizabeth Tellers
 Carrol Thomas
 James Thomas
 Goldie Thompson
 Robyn Tower
 Stephanie Trougakos
 James Turnini
 Ronda Unruh
 Luann S. Waters
 Debra Weaver
 Jessica Welp
 Autumn West
 Lisa West
 Ashley White
 Michael Whitmer
 Susan and Ralph Wilsack
 Anne Wimberly
 Linda and W. Paul Woody
 David Woolly
 Amazon Smile
 Network for Good

FIRST RESPONDER TICKET DONORS

Marty Askins
 Deanna Beatty
 Gary and Michelle Brooks
 Jerry and Karen Conner
 Ann Deal
 Michael Duncan
 Brad and Celine Ferguson
 Win and Anne Holbrook
 Casey Hultman
 Jo Ann Hunt
 Deborah Payne
 Brenda Rawlings
 Tim and Teresa Ridinger
 Anna-Faye Rose
 Arthur and Janet Rus
 Julie and Scott Sampson
 Cindy Schultz
 Ruth and Terry Shyer
 Kathy Smith
 Glenda Stansbury
 Beulah and Orville Tate
 Jill Walker
 Kevin and Monica Wittrock

Special thanks to the following organizations who match the gifts of their employees:

AT&T
 Bank of America
 Boeing
 The Coca-Cola Company
 Dell
 E.L. and Thelma Gaylord Foundation
 Inasmuch Foundation
 Kimray

LYRIC THEATRE BEACON CLUB MEMBERS

Sharlene S. Branham
 Max A. Brattin
 Doug and Ginny Lawrence
 Marilyn Lesneski
 Paula and Carl Stover
 Don T. and Carolyn T. Zachritz



LYRIC THEATRE

THELMA GAYLORD ACADEMY




COME SEE
US!

Lion King JR - May 14-16
Tuck Everlasting - June 10-12
Spring Play - June 16-17

www.thelmagaylordacademy.com

Photography by Lance Payne



BAD GRANNY'S
Bazaar
DIANA HARRIS
 1759 N.W. 16TH
 OKLAHOMA CITY, OK 73106
 (PLAZA DISTRICT)
 TUES THRU SAT, 12 TO 7
 405-528-4585

BECOME A FACEBOOK FAN



- Corporate Gift Tins •
- 200+ Sno-Cone Flavors •
- Ice Shavers •
- Block Ice •
- Special Events •

Ludinia Lahodny : 405-760-7976
 Rick Lahodny : 405-760-6925
 Shop : 405-681-6818

5212 S. Shields Blvd. • OKC, OK • 73129

Gourmet Popcorn & Nuts • Frost-Bites Shaved Ice



KISMET ARTS
 STUDIO & THEATRE

ARTS EDUCATION IN OKLAHOMA CITY

Voice | Acting | Dance | Piano

KISMETARTSOKC.COM



2701 N. CLASSEN BLVD.
 OKC, OK 73106

405.524.7333

A TRADITIONALLY
 MODERN EXPERIENCE

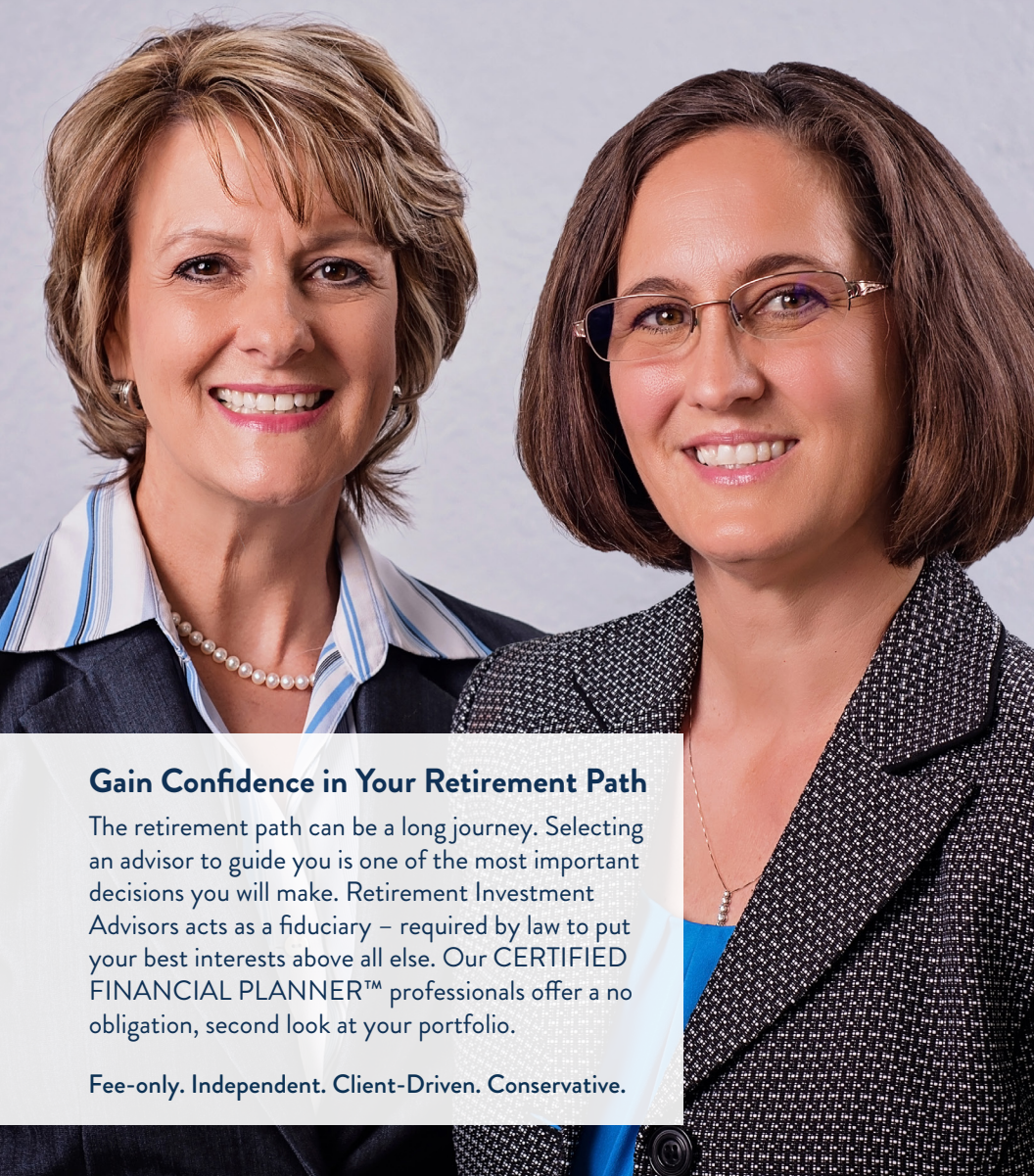
WWW.GRANDHOUSEOKC.COM

SERVING OKLAHOMA FAMILIES FOR 21 YEARS!



Trust • Investments • Retirement Plans
 Oil & Gas • Real Estate • Financial Planning

405-848-8899 • HERITAGETRUST.COM



Gain Confidence in Your Retirement Path

The retirement path can be a long journey. Selecting an advisor to guide you is one of the most important decisions you will make. Retirement Investment Advisors acts as a fiduciary – required by law to put your best interests above all else. Our CERTIFIED FINANCIAL PLANNER™ professionals offer a no obligation, second look at your portfolio.

Fee-only. Independent. Client-Driven. Conservative.

Let us be your guide. Schedule a complimentary consultation today.

theretirementpath.com/lyric
405.842.3443



RETIREMENT
INVESTMENT ADVISORS, INC.

Oklahoma City | Edmond | Frisco

LET FFB TAKE CENTER STAGE FOR ALL YOUR FINANCES



Member FDIC



**First
Fidelity
Bank**

WE GO WHERE YOU GO.
FFB.COM